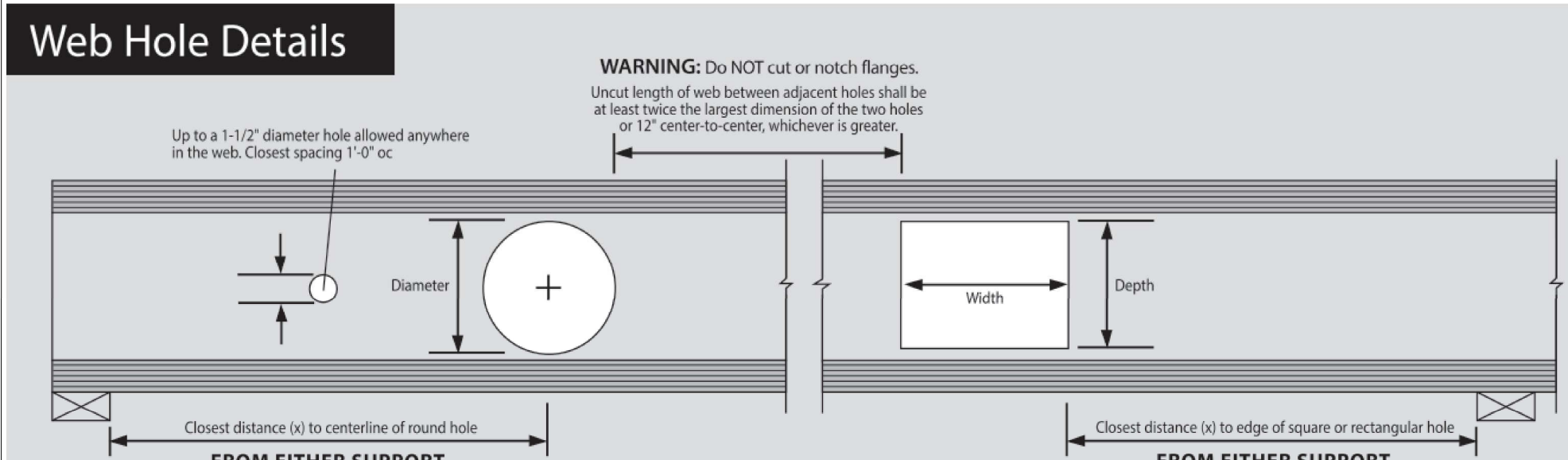
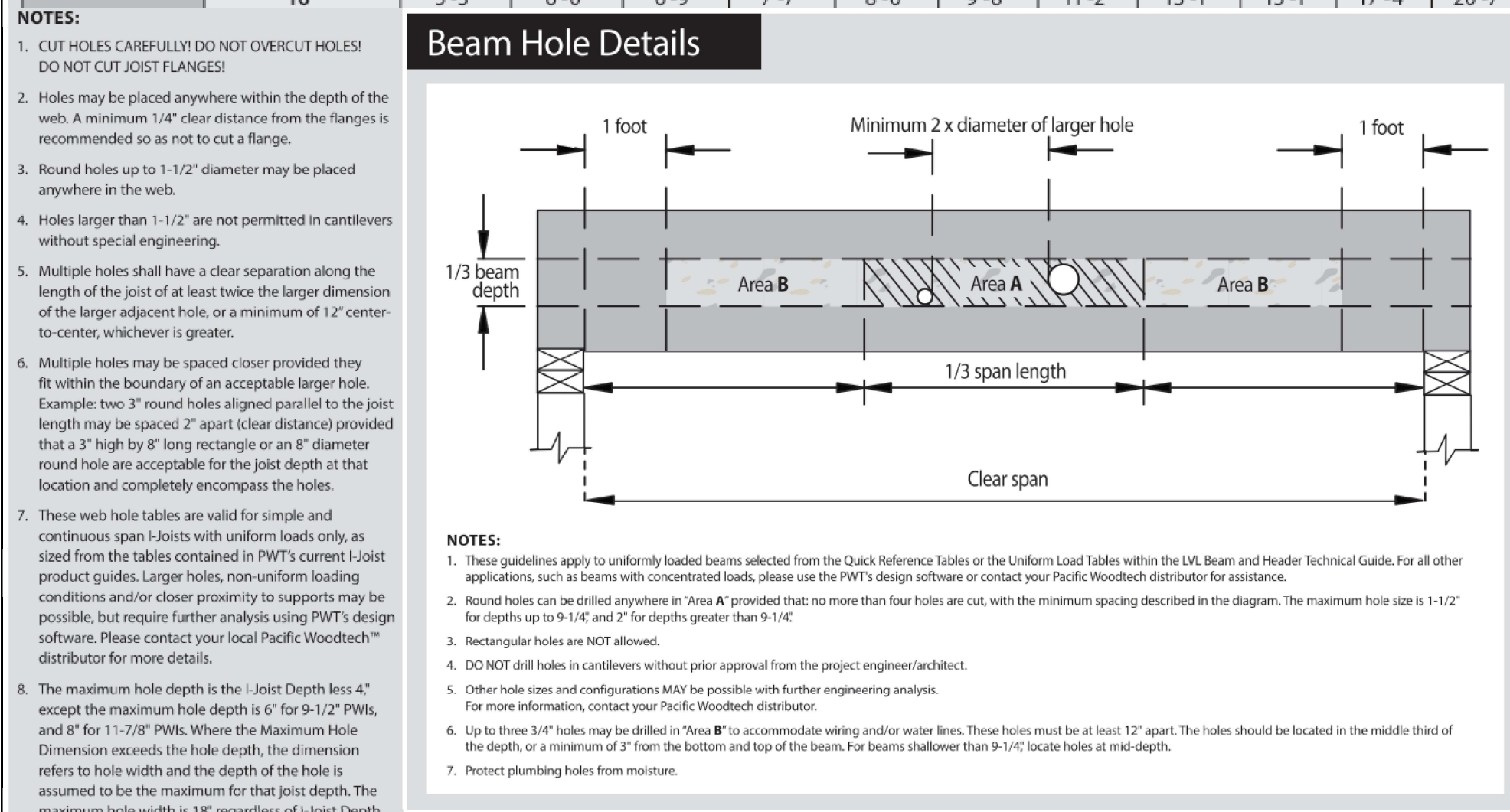


2160 Satellite Blvd., Suite 450
Duluth, GA 30097
888-613-5078



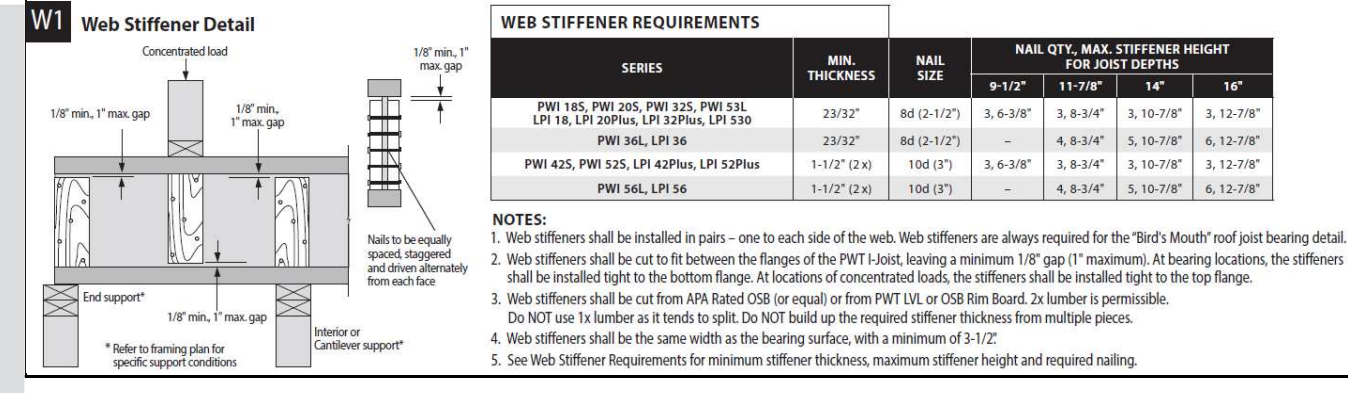
CLOSEST DISTANCE (X) - (FT - IN)

SERIES	DEPTH	CIRCULAR HOLE DIAMETER											
		2"	3"	4"	5"	6"	7"	8"	9"	10"	11"	12"	
PWI 18S, LPI 18	9-1/2"	1'-2"	1'-0"	1'-10"	2'-7"	3'-3"	4'-3"	-	-	-	-	-	-
	11-7/8"	1'-0"	1'-5"	2'-1"	2'-9"	3'-6"	4'-3"	5'-5"	-	-	-	-	-
	14"	1'-0"	1'-0"	1'-5"	2'-0"	2'-8"	-	-	-	-	-	-	-
PWI 20S, LPI 20Plus	9-1/2"	1'-0"	1'-4"	1'-11"	2'-5"	2'-11"	3'-6"	4'-0"	-	-	-	-	-
	11-7/8"	1'-0"	1'-4"	1'-11"	2'-5"	2'-11"	3'-6"	4'-0"	4'-6"	5'-1"	-	-	-
	14"	1'-3"	1'-8"	2'-2"	2'-7"	3'-1"	3'-6"	4'-0"	4'-6"	5'-1"	5'-7"	6'-3"	6'-9"
PWI 32S, LPI 32Plus	9-1/2"	1'-0"	1'-2"	1'-11"	2'-9"	3'-6"	-	-	-	-	-	-	-
	11-7/8"	1'-1"	1'-9"	2'-5"	3'-0"	3'-8"	4'-4"	5'-0"	-	-	-	-	-
	14"	1'-8"	2'-3"	2'-10"	3'-5"	4'-0"	4'-8"	5'-3"	5'-11"	6'-7"	-	-	-
PWI 42S, LPI 42Plus	9-1/2"	1'-3"	2'-3"	3'-4"	4'-4"	5'-5"	-	-	-	-	-	-	-
	11-7/8"	3'-2"	3'-10"	4'-7"	5'-3"	6'-0"	6'-9"	7'-8"	-	-	-	-	-
	14"	4'-5"	5'-0"	5'-7"	6'-1"	6'-8"	7'-3"	8'-0"	8'-10"	9'-11"	-	-	-
PWI 52S, LPI 52Plus	9-1/2"	5'-0"	5'-6"	6'-2"	6'-9"	7'-5"	8'-2"	8'-11"	-	-	-	-	-
	11-7/8"	6'-1"	6'-7"	7'-1"	7'-7"	8'-3"	8'-11"	9'-8"	10'-6"	11'-4"	-	-	-
	14"	7'-1"	7'-6"	7'-11"	8'-5"	9'-0"	9'-8"	10'-5"	11'-3"	12'-1"	12'-11"	13'-9"	14'-7"
PWI 36L, LPI 36	9-1/2"	1'-0"	2'-0"	3'-0"	4'-0"	5'-1"	6'-2"	7'-6"	-	-	-	-	-
	11-7/8"	1'-0"	2'-0"	3'-0"	4'-0"	5'-1"	6'-2"	7'-6"	-	-	-	-	-
	14"	1'-10"	2'-8"	3'-7"	4'-5"	5'-4"	6'-3"	7'-3"	8'-6"	9'-11"	-	-	-
PWI 56L, LPI 56	9-1/2"	1'-3"	2'-5"	3'-7"	4'-9"	6'-0"	-	-	-	-	-	-	-
	11-7/8"	3'-9"	4'-9"	5'-9"	6'-9"	7'-9"	8'-10"	9'-11"	-	-	-	-	-
	14"	4'-10"	5'-9"	6'-8"	7'-7"	8'-7"	9'-7"	10'-7"	11'-7"	12'-10"	-	-	-
PWI 53L, LPI 530	9-1/2"	1'-0"	1'-7"	2'-6"	3'-8"	4'-11"	6'-2"	7'-9"	-	-	-	-	-
	11-7/8"	1'-0"	1'-3"	1'-11"	2'-8"	3'-9"	4'-11"	6'-1"	7'-6"	9'-4"	-	-	-
	14"	1'-0"	1'-2"	1'-8"	2'-2"	2'-11"	4'-0"	6'-2"	7'-4"	8'-10"	11'-2"	-	-

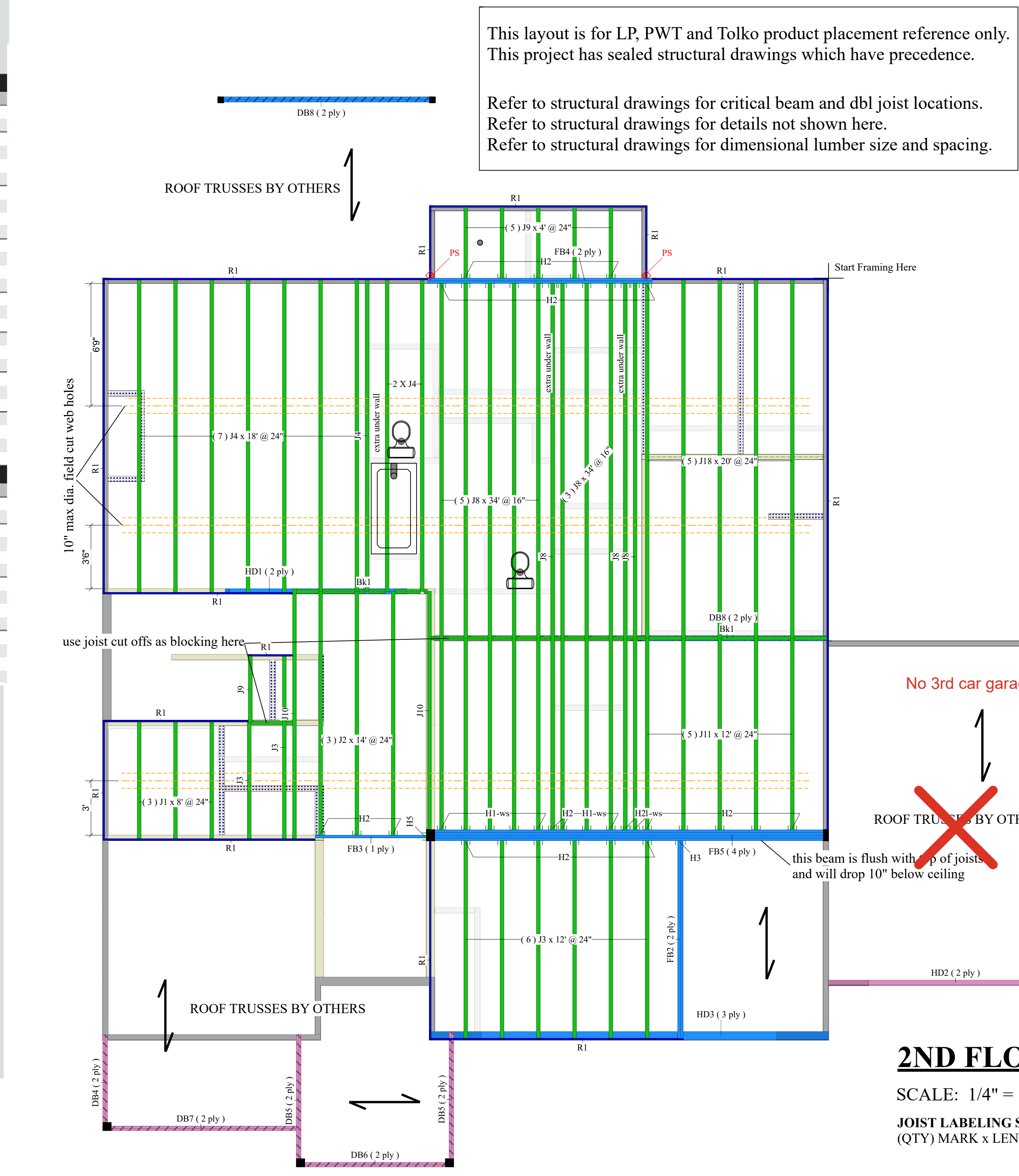


Important Notes
WARNING: Failure to follow proper procedures for handling, storage and installation could result in unsatisfactory performance, unsafe structures and possible collapse.
These instructions are offered as a guide to good practice in the handling, storage and installation of PWT joists and LVL. They are, however, safety general recommendations and, in some instances, other or additional procedures may be desirable. In all cases, the procedures used should be as specified by the architect/engineer responsible for the entire building.
- The joists are intended for product selection, and assumes that all components and details have been correctly specified.
- Consult the PWT joist LVL brochures, technical product literature, and/or contact your PWT distributor for assistance.
- All joist blocking, connections, and temporary bracing must be installed before joists are allowed on the structure.
- Joists must be placed on the edge of the surface on which they are supported and must be properly braced.
- After sheathing, do not overcut joists with construction materials exceeding design loads.
- PWT joists (products 3 Joists and LVL) must be used under dry, covered and well-ventilated exterior conditions in which the equilibrium moisture content does not exceed 19% (ISO-C) or the average equilibrium moisture content (EMC) of lumber is 12% or less over a year and does not exceed 19% at any time (ISO-C).

Product Substitution Warning
FAILURE may result if this product is substituted with other brands or products. This analysis is for PACIFIC WOODTECH products only. US Lumber will not be held responsible if other brands are substituted.



This layout is for LP, PWT and Tolko product placement reference only. This project has sealed structural drawings which have precedence. Refer to structural drawings for critical beam and dbl joist locations. Refer to structural drawings for details not shown here. Refer to structural drawings for dimensional lumber size and spacing.



2nd floor I Joist (Flush)

Label	Description	Width	Depth	Qty	Plies	Pcs	Length
J8	PWI 20S	2.5	14	11	3	11	34-0-0
J18	PWI 20S	2.5	14	5	2	5	20-0-0
J4	PWI 20S	2.5	14	10	2	10	18-0-0
J10	PWI 20S	2.5	14	2	2	2	14-0-0
J2	PWI 20S	2.5	14	3	1	3	14-0-0
J11	PWI 20S	2.5	14	5	1	5	12-0-0
J3	PWI 20S	2.5	14	7	1	7	12-0-0
J3	PWI 20S	2.5	14	1	1	1	8-0-0
J1	PWI 20S	2.5	14	3	1	3	8-0-0
J9	PWI 20S	2.5	14	6	1	6	4-0-0

LVL/LSL (Flush)

Label	Description	Width	Depth	Qty	Plies	Pcs	Length
FB4	2.0E 2900Fb PWT LVL	1.75	14	1	2	2	14-0-0
FB2	2.0E 2900Fb PWT LVL	1.75	14	1	2	2	12-0-0
FB3	2.0E 2900Fb PWT LVL	1.75	14	1	1	1	8-0-0
FB5	2.0E 2900Fb PWT LVL	1.75	24	1	4	4	24-0-0

LVL/LSL (Dropped)

Label	Description	Width	Depth	Qty	Plies	Pcs	Length
DB8	2.0E 2900Fb PWT LVL	1.75	9.25	2	2	4	12-0-0
HD1	2.0E 2900Fb PWT LVL	1.75	11.875	1	2	2	10-0-0
HD3	2.0E 2900Fb PWT LVL	1.75	16	1	3	3	22-0-0

Beam By Others (Dropped)

Label	Description	Width	Depth	Qty	Plies	Pcs	Length
HD2	[2x12]	1	2	2	2	2	14-0-0
DB7	[2x10]	1	2	2	2	2	12-0-0
DB6	[2x10]	1	2	2	2	2	10-0-0
DB5	[2x10]	2	2	4	2	4	8-0-0
DB4	[2x10]	1	2	2	2	2	6-0-0

Rim Board

Label	Description	Width	Depth	Qty	Plies	Pcs	Length
R1	Tolko Rim Board Plus 1.125 X 14	1.125	14			14	12-0-0

Blocking

Label	Description	Width	Depth	Qty	Plies	Pcs	Length
Bk1	PWI 20S	2.5	14	LinFt	Varies	Varies	16-0-0

Hanger

Label	Pcs	Description	Beam/Girder fasteners	Supported Member fasteners
H2	33	IUS2.56/14 (Min)	12 10d	
H1	9	IUS2.56/14 (Max)	14 10d	2 10dx1 1/2
H3	1	HHUS410	30 16d	10 16d
H5	1	HUS1.81/10		



Designer
Kyle Miltzer

Revised
June 11, 2024

2nd floor
Design Method ASD (USA)
Building Code IRC 2018

Floor
Loads
Live 40
Dead 10

Deflection Joist
LL Span L/ 480
TL Span L/ 240
LL Cant 2L/ 240
TL Cant 2L/ 180
Deflection Flush Girder
LL Span L/ 360
TL Span L/ 240
LL Cant 2L/ 240
TL Cant 2L/ 180
Deflection Dropped Girder
LL Span L/ 360
TL Span L/ 240
LL Cant 2L/ 240
TL Cant 2L/ 180
Deflection Header
LL Span L/ 360
TL Span L/ 240
LL Cant 2L/ 240
TL Cant 2L/ 180
Decking
OSB
23/32 APA Rated Sturd-I-Floor
Nailed & Glued

Legend

- WS Web Stiffener
- WS In Hanger Label Denotes Web Stiffener
- PS Point Load Support (D2 Detail)
- Load From Above
- Exterior Bearing Wall
- Interior Bearing Wall
- Non-Bearing Wall
- OSB/LSL Rim (Color Varies)
- PWI 18S/20S I Joist
- PWI 32S I Joist
- PWI 42S/50L I Joist
- Triforce/Open Joist (Color Varies)
- Dropped Beam (Color Varies By Product)
- Flush Beam (Color Varies By Product)
- Field Framed Pony Wall
- Column

Installation Guide
For access to the PWT installation guide, please use the camera function on your mobile device and scan this QR Code or use the web address shown below.
<https://www.uslumber.com/engineered-lumber/lp-solidstart/RESOURCES>

This Material Take Off is provided as an estimate of material needed for the referenced project. It is based on information provided and standard building and construction assumptions. The Take Off is provided without representation or warranty of any kind and is in no way guaranteed to reflect the exact quantity or types of material necessary to complete the project. The customer/builder and/or the architect/engineer are responsible for reviewing and verifying the listed materials based on the way they plan to construct the project. Actual material required to complete the project may be more or less than what is reflected in the Take Off, and any shortages or overages are the sole responsibility of the customer/builder and/or the architect/engineer.