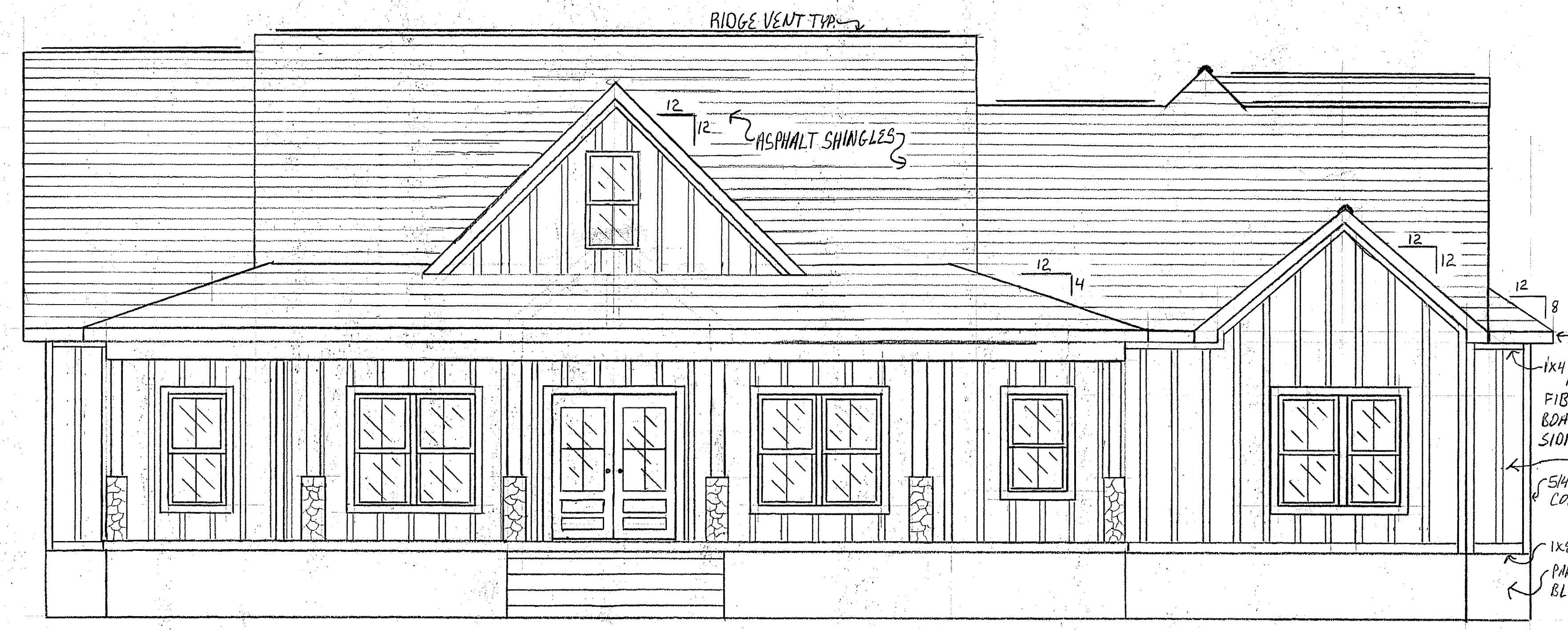


REAR ELEVATION



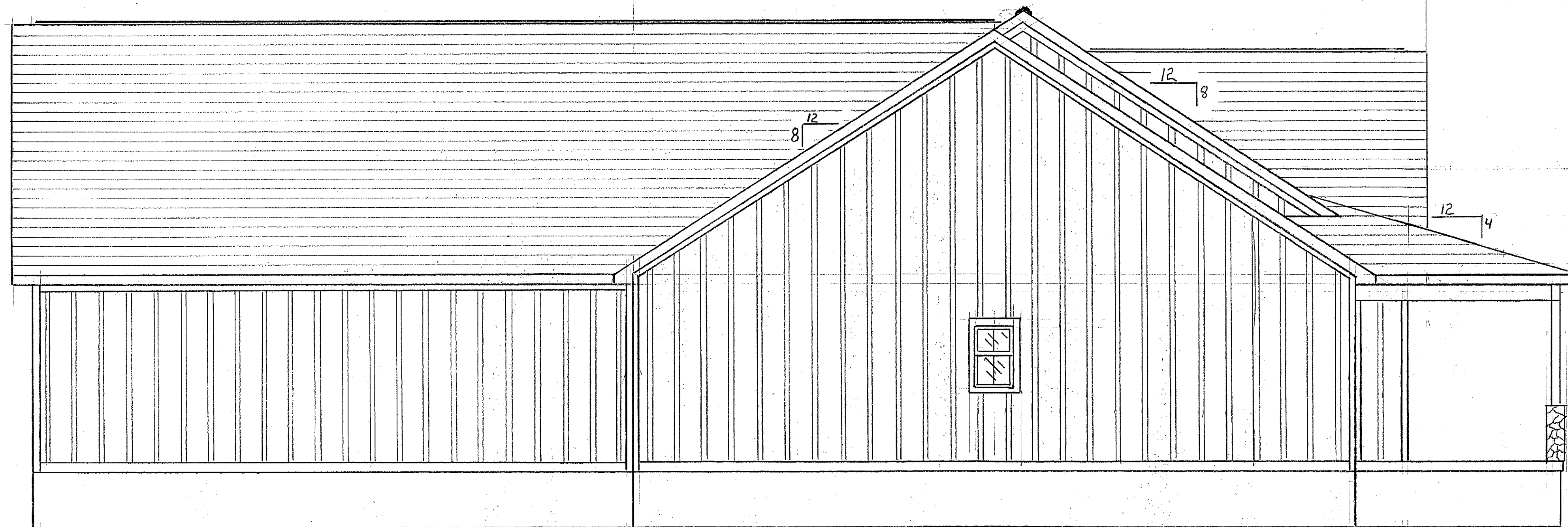
FRONT ELEVATION

THESE PLANS ARE DESIGNED TO MEET THE REQUIREMENTS OF THE NORTH CAROLINA RESIDENTIAL CODE 2018 EDITION.

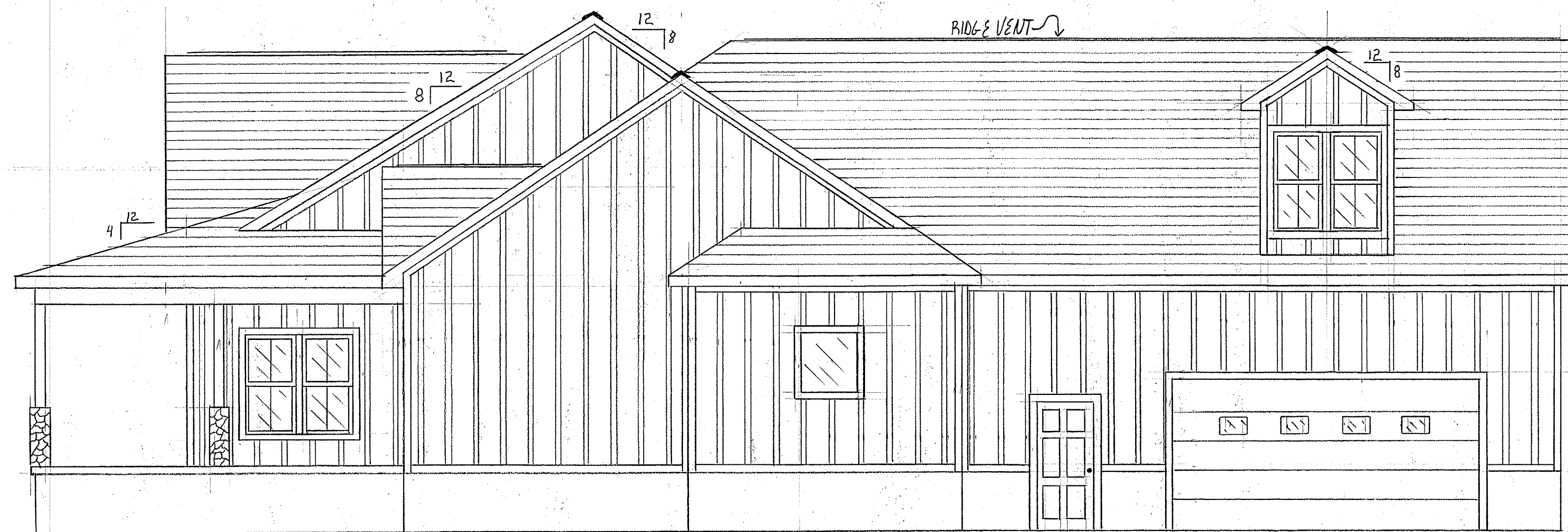
- ENERGY COMPLIANCE:
- 1- CLIMATE ZONE 4
  - 2- WINDOW U-FACTOR: .35  
SHGC: .30
  - 3- INSULATION R-VALUES: CEILING/ROOF- R38  
WALLS- R15  
FLOOR- R19
- FIRST LEVEL HEATED: 2126#  
 BONUS: 460#  
 GARAGE: 748#  
 PORCHES: 810#

- 1x8 FIBER CEMENT FASCIA
- 1x4 FIBER CEMENT FREEZE BOARD
- FIBER CEMENT BOARD / BATTON SIDING
- 5/4" FIBER CEMENT BORDER BOARDS
- 1x8 BAND BOARD
- PAVED CEMENT BLOCK FOUNDATION

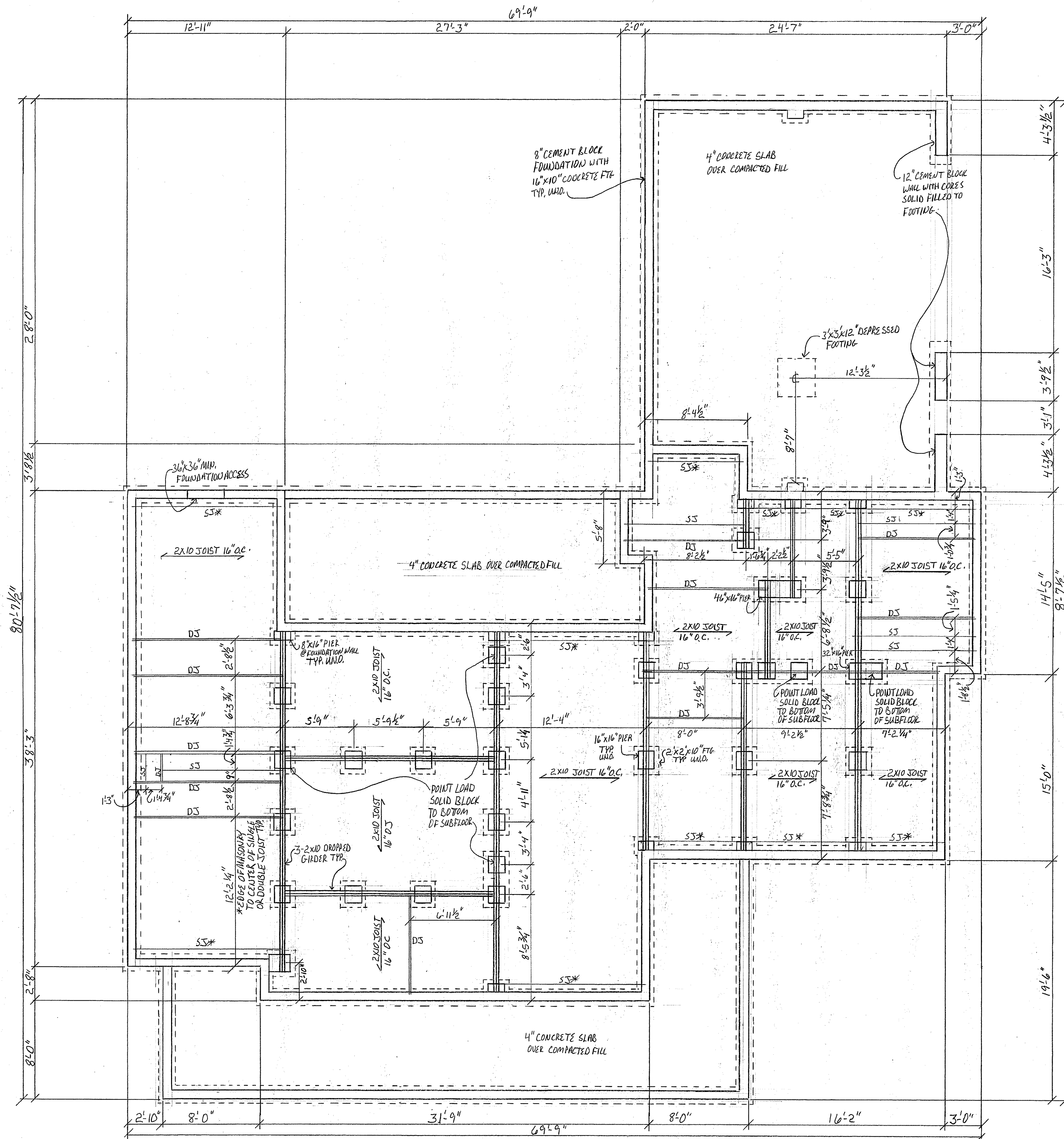
PEYTON & AMBERLY HOME	
ELEVATIONS: FRONT & REAR	
DRAWN BY: WILLIAM JOHNSON	
SCALE: 1/4" = 1'	
DATE: JANUARY 5, 2025	
PAGE: 1 OF 7	



LEFT SIDE ELEVATION



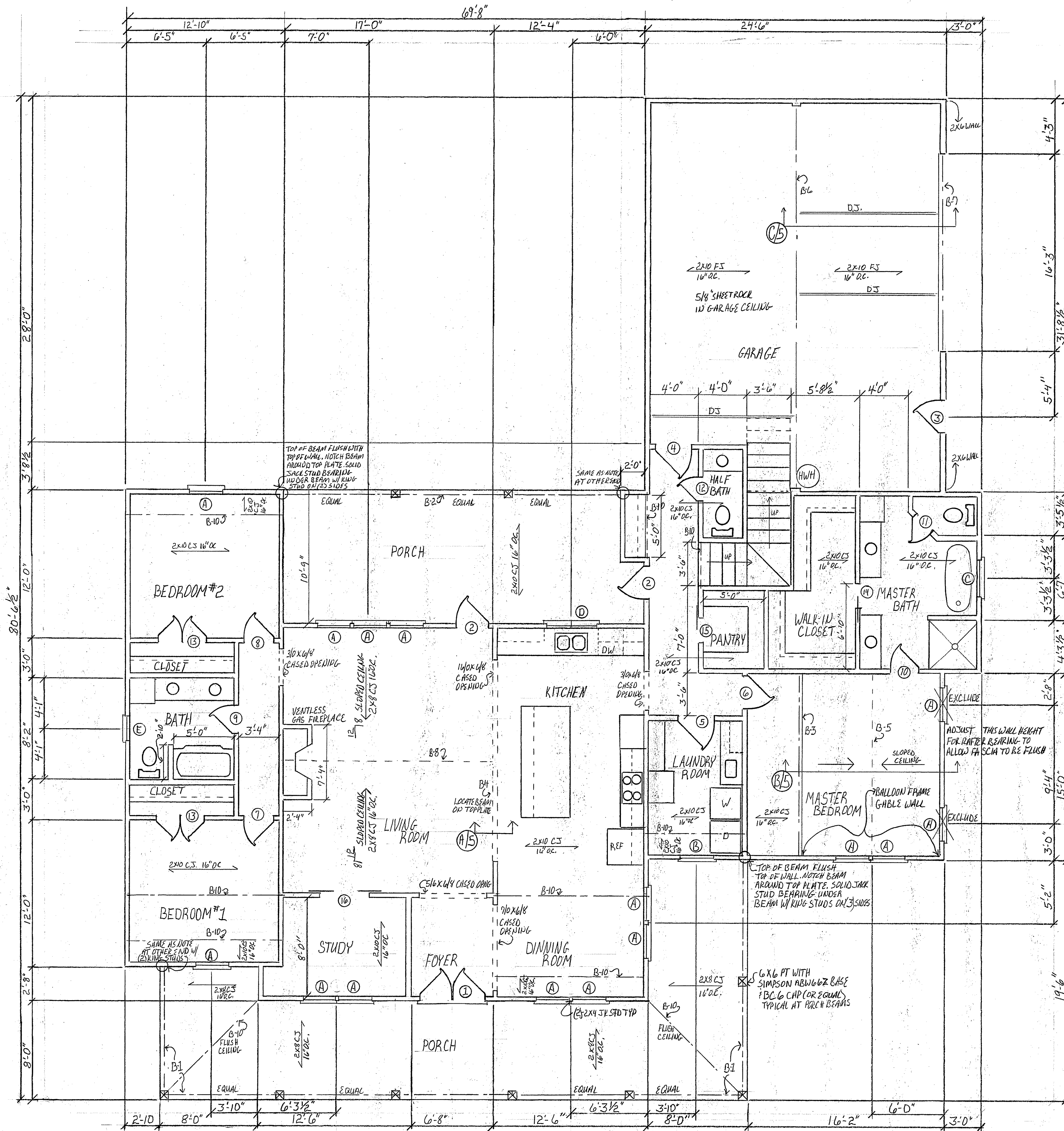
RIGHT SIDE ELEVATION



- FOUNDATION NOTES**
- 4" MIN. PROJECTION BEYOND FOUNDATION/PIERS FOR ALL FOOTINGS
  - PROVIDE FOOTING FOR MASONRY STEPS @ FRONT PORCH
  - \* □ 1 1/2" CLEARANCE BETWEEN BAND & PARALLEL JOIST
  - DOUBLE JOIST UNDER ALL WALLS PARALLEL TO JOIST
  - DOUBLE ALL BANDS PARALLEL TO JOIST
  - PROVIDE SOLID BLOCKING FROM FOUNDATION/PIERS TO BOTTOM OF SUBFLOOR
  - PROVIDE 1/2" Ø ANCHOR BOLTS @ 6" O.C. WITHIN 12" OF THE END OF MUDSILL
  - COMPLY WITH DIMENSION PROVIDED FOR LOCATION OF JOIST TO MISS PLUMBING
  - DIMENSION HERE FROM OUTSIDE FACE OF MASONRY FOR FOUNDATION
  - TO CENTER OF PIERS/GIRDERS: SPECIAL JOIST
  - PT. MUDSILL & BLOCKING WITH APPROVED FOAM SEAL GASKET BETWEEN MASONRY & FLOOR SYSTEM FRAMING
  - PT. BAND @ ALL PORCH LOCATIONS
  - ALL PIERS TO BE 9/16" BELOW TOP OF FOUNDATION
  - SEALED CRAWL SPACE DESIGNED BY INSTALLER
  - NO FOUNDATION VENTS
  - #2 SPF OR SYP FOR ALL FRAMING MEMBERS
  - SS = SINGLE JOIST
  - DS = DOUBLE JOIST
  - SEE DETAIL PAGE FOR CLARIFICATIONS

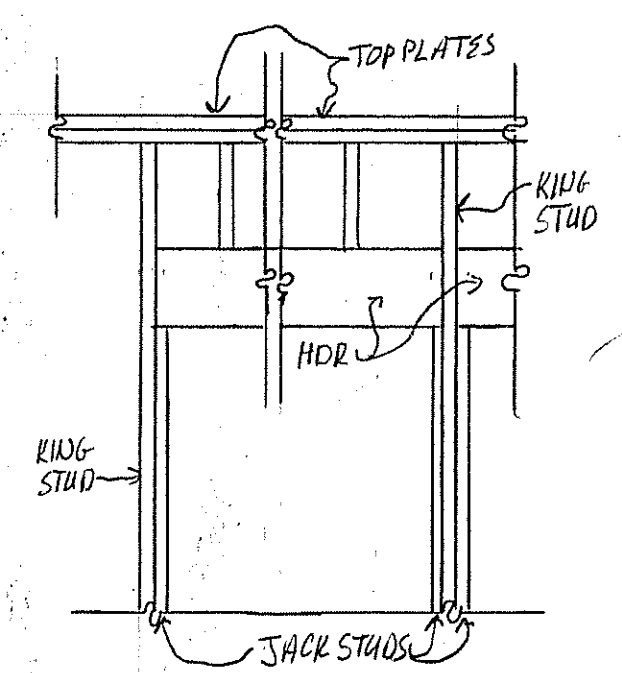
PEYTON & AMBERLY HOME

FOUNDATION PLAN  
 DRAWN BY: WILLIAM JOHNSON  
 SCALE: 1/4" = 1'  
 DATE: JANUARY 5, 2025  
 PAGE: 3 OF 7



DOOR		MATERIAL		SCHEDULE			
DOOR#	NOMINAL SIZE	OPERATION	DOOR	FRAME	HEADER	JACK STUD	KING STUD
1	218x108 PR	60°x83°	FRAMING		(2)2x10	2x10	1x10
2	218x108 PR	34°x83°	R.H. HINGED		(2)2x10	1x10	1x10
3	218x108 PR	34°x83°	L.H. HINGED		(2)2x10	1x10	1x10
4	36x108 PR	38°x83°	R.H. HINGED		(2)2x10	1x10	1x10
5	36x108 PR	38°x83°	R.H. HINGED		(2)2x6	1x10	1x10
6	36x108 PR	38°x83°	L.H. HINGED		(2)2x10	1x10	1x10
7	216x108 PR	32°x83°	R.H. HINGED		(2)2x6	1x10	1x10
8	216x108 PR	32°x83°	R.H. HINGED		(2)2x6	1x10	1x10
9	216x108 PR	30°x83°	L.H. HINGED		(2)2x6	1x10	1x10
10	216x108 PR	32°x83°	R.H. HINGED		(2)2x6	1x10	1x10
11	216x108 PR	26°x83°	R.H. HINGED		(2)2x6	1x10	1x10
12	216x108 PR	26°x83°	L.H. HINGED		(2)2x6	1x10	1x10
13	216x108 PR	50°x83°	OUTSWING		(2)2x6	1x10	1x10
14	216x108 PR	48°x84°	POCKET		(2)2x10	1x10	1x10
15	216x108 PR	26°x83°	BAR/DOOR		(2)2x6	1x10	1x10
16	216x108 PR	50°x83°	PR BAR/DOOR		(2)2x10	2x10	1x10

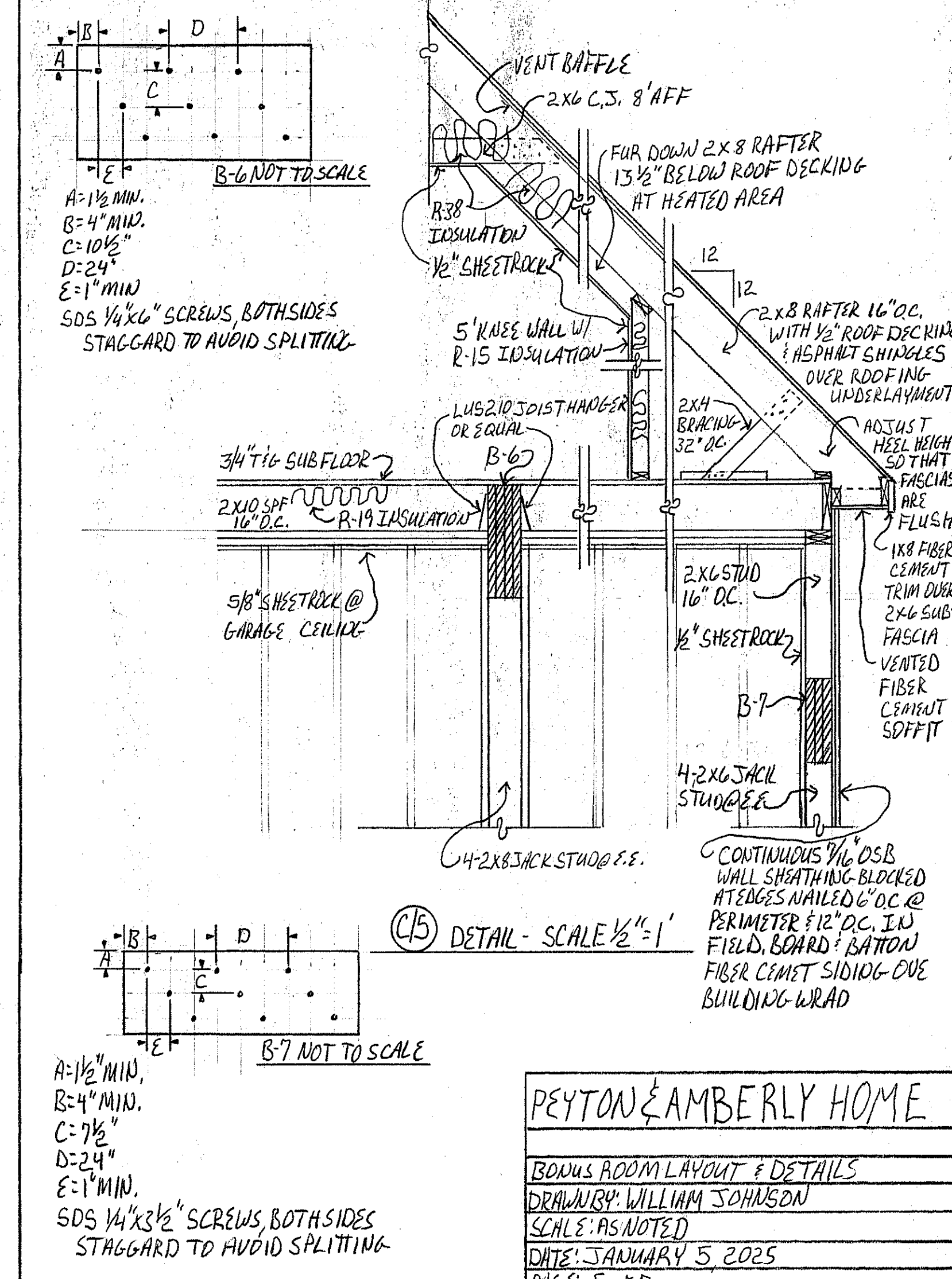
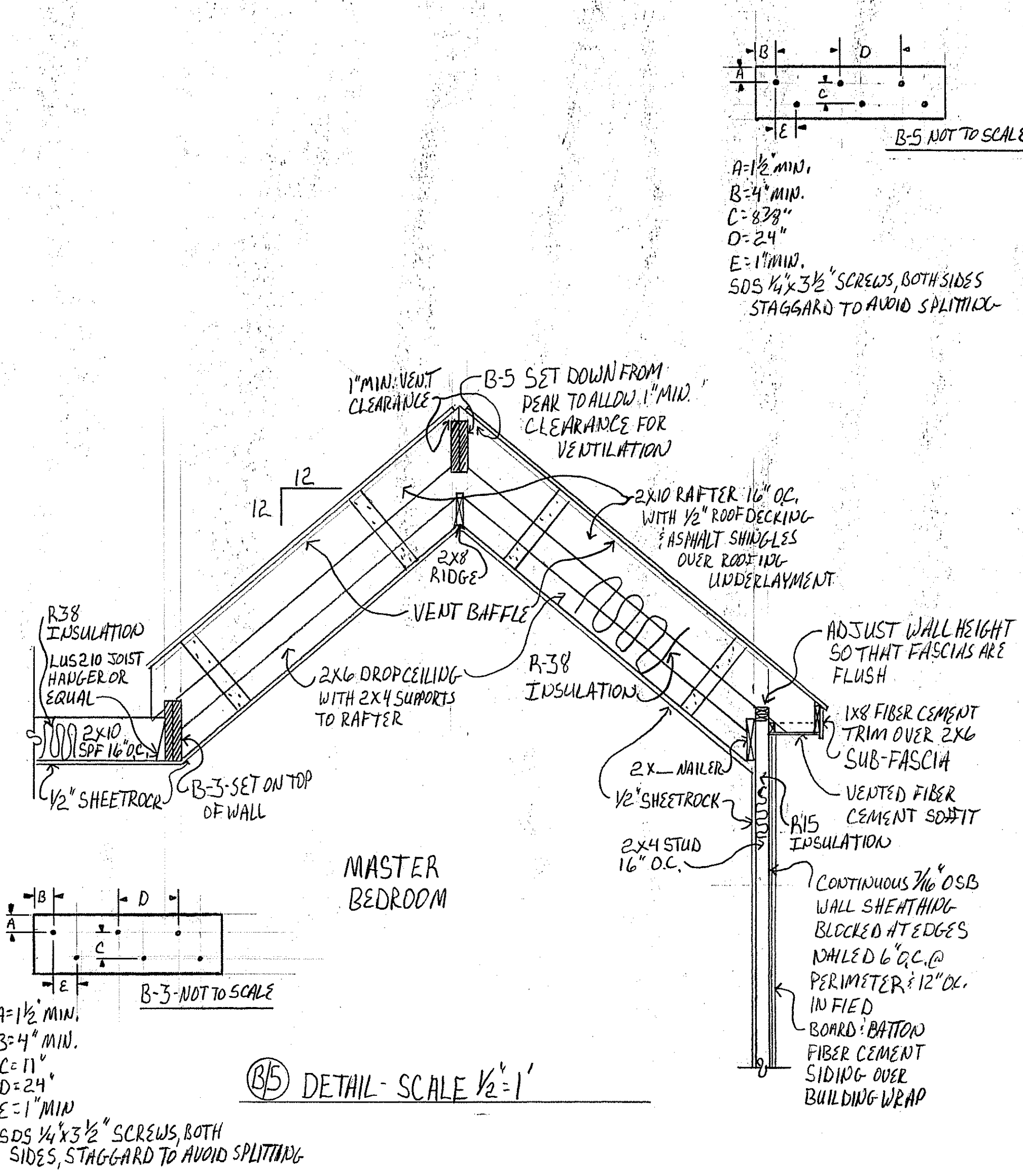
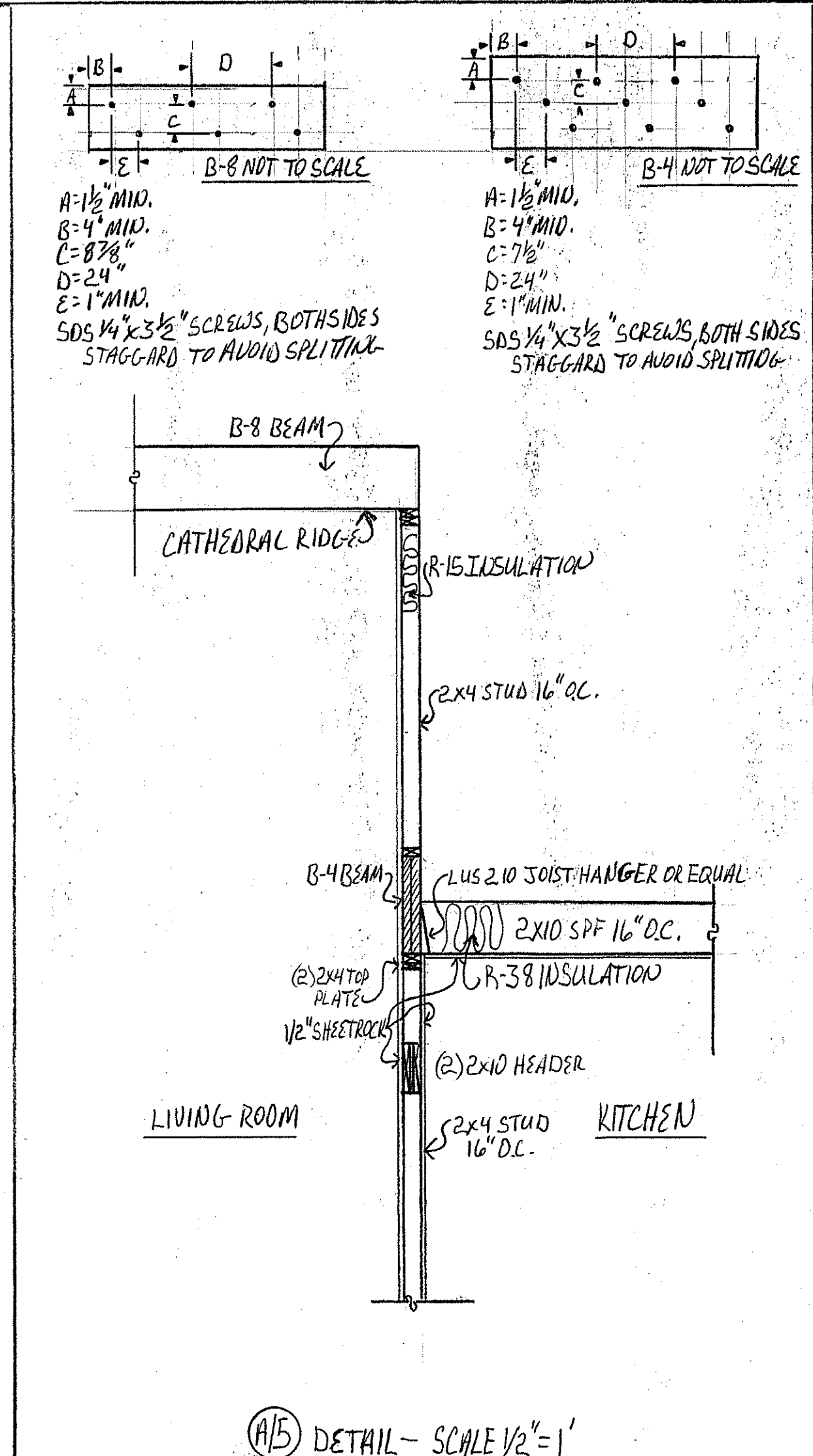
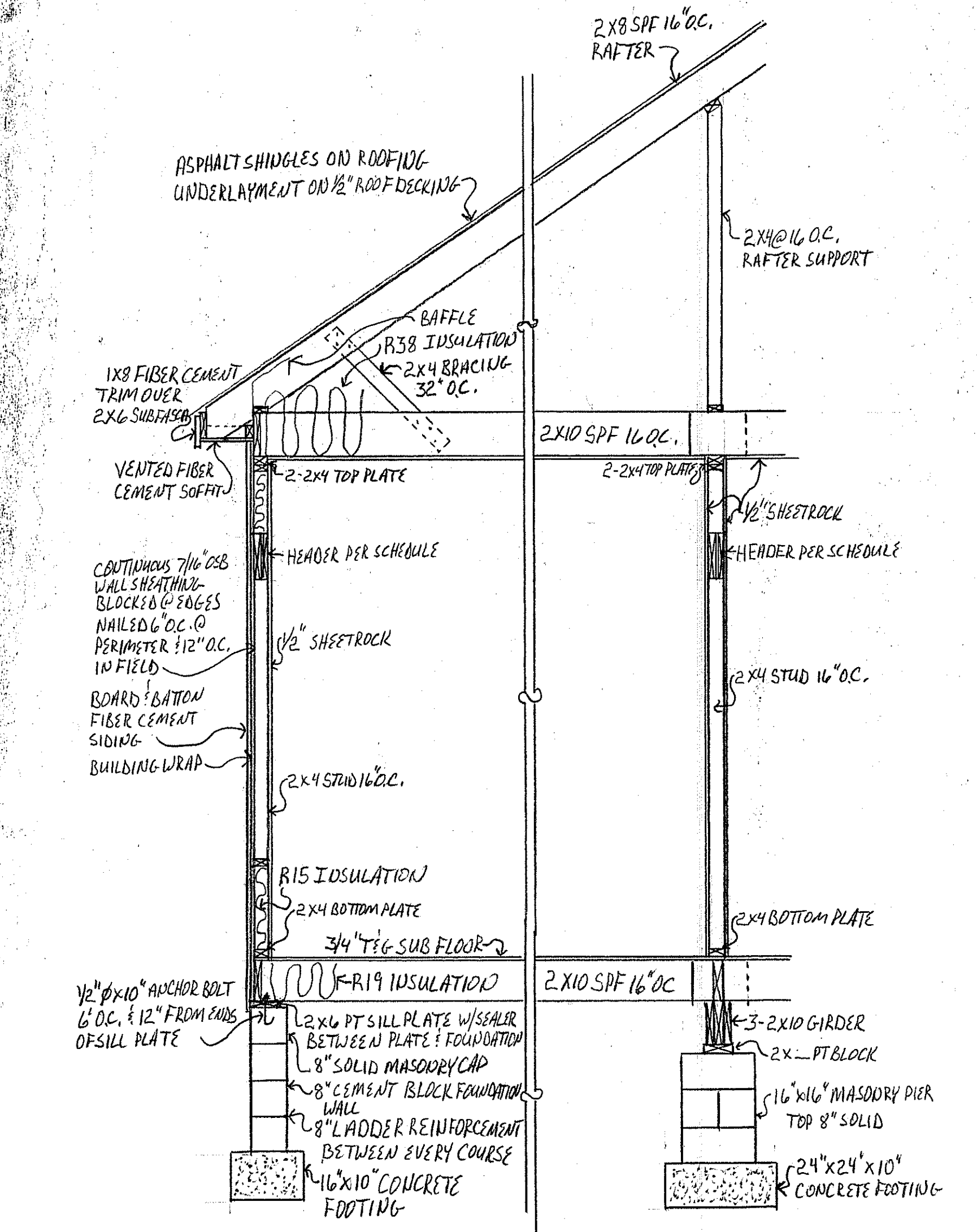
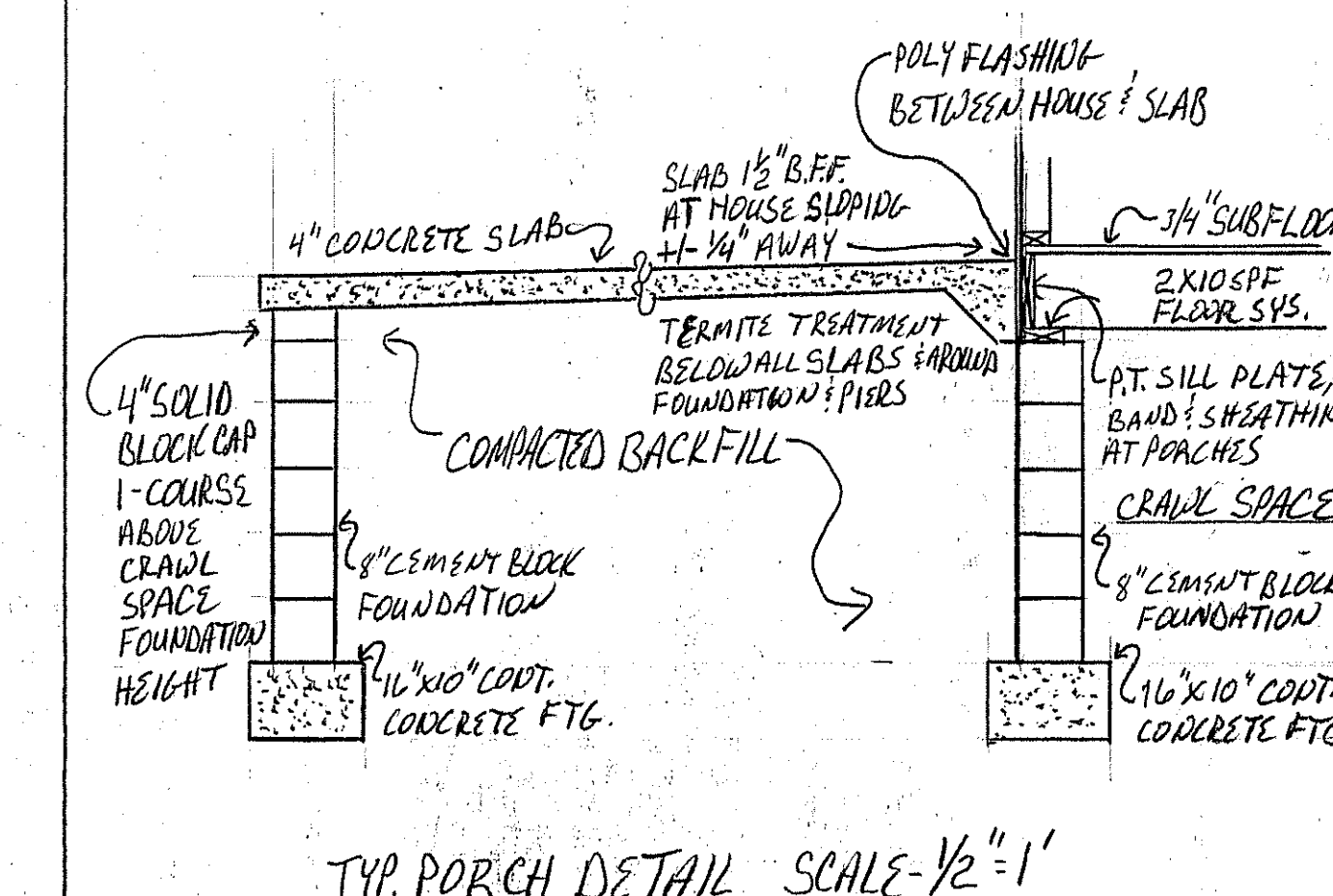
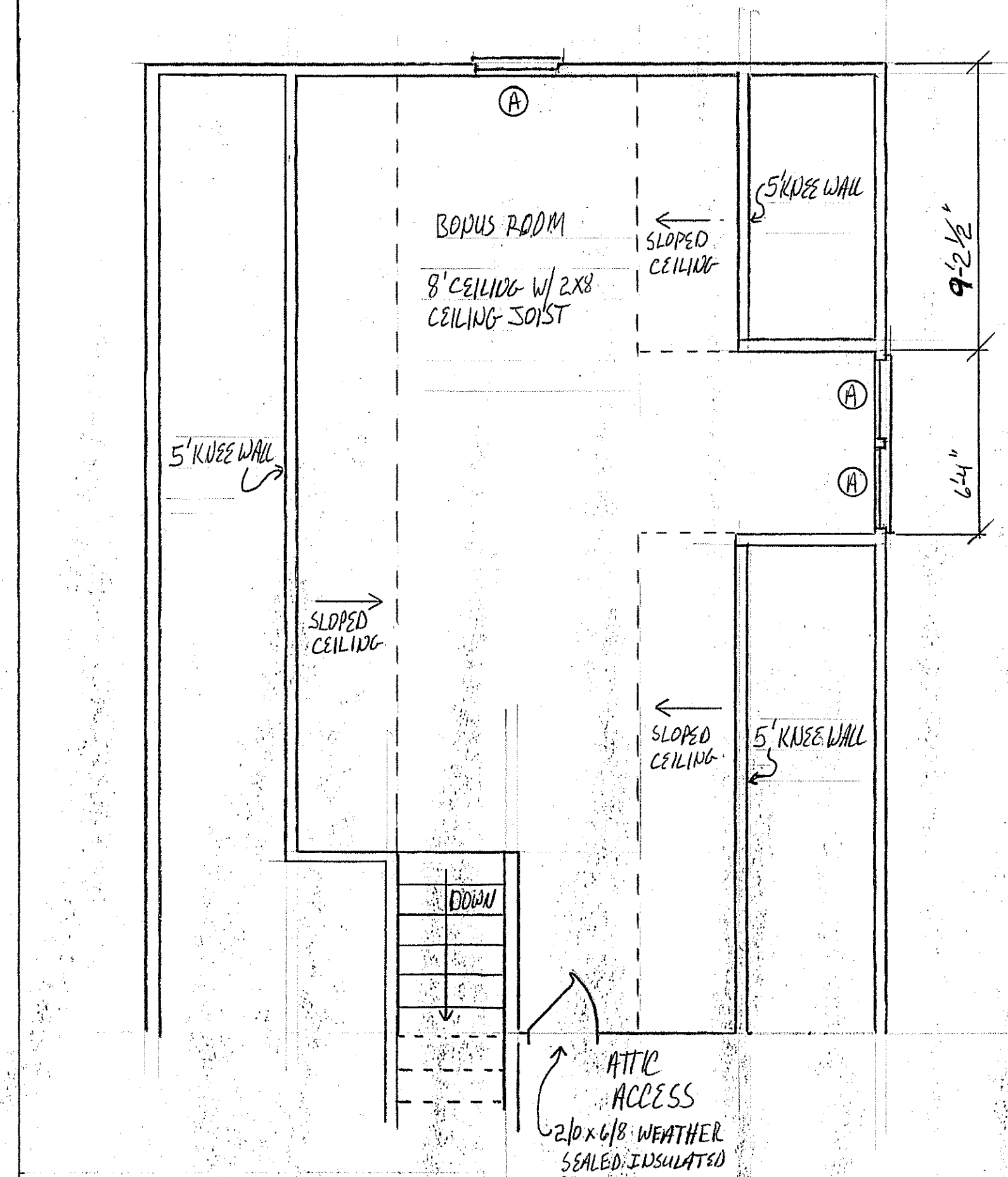
WINDOW		MATERIAL		SCHEDULE		
WINDOW#	NOMINAL SIZE	OPERATION	MATERIAL	HEADER	JACK STUD	KING STUD
A	218x512		DBL H/W	(2)2x10	1x10	1x10
B	218x416		DBL H/W	(2)2x10	1x10	1x10
C	310x312	FIXED	OBSCURE GLASS	(2)2x10	1x10	1x10
D	210x312		DBL H/W	(2)2x10	1x10	1x10
E	210x312		DBL H/W	(2)2x10	1x10	1x10
F	218x416		DBL H/W	(2)2x6	1x10	1x10



- 9' CEILING HEIGHT TYP. IN HEATED LOCATIONS EXCEPT AT SLOPED CEILINGS
- GARAGE: PORCH CEILING LEVEL WITH CEILING IN HEATED LOCATIONS
- DIMENSIONS FACE OF STUD

BEAM SCHEDULE				
BEAM#	MATERIAL/SIZE	JACK STUD	KING STUD	DETAIL
B-1	(3)-2x10	NA	NA	NA
B-2	(3)-2x10	NA	NA	NA
B-3	(2)-1 3/4" x 14" LVL	NA	4x6 E.E.	SEE FRO4
B-4	(2)-1 3/4" x 18" LVL	NA	4x6 E.E.	SEE FRO3
B-5	(2)-1 3/4" x 11 3/8" LVL	NA	3x6 E.E.	SEE FRO2
B-6	(1)-1 3/4" x 24" LVL	(1)2x8 E.E.	2x6 E.E.	SEE FRO1
B-7	(3)-1 3/4" x 18" LVL	(1)2x6 E.E.	2x6 E.E.	SEE FRO2
B-8	(2)-1 3/4" x 11 3/8" LVL	NA	3x6 E.E.	SEE FRO1
B-9	(3)-2x10	NA	3/16x6	
B-10	(2)-2x10	NA	2x6 E.E.	NA

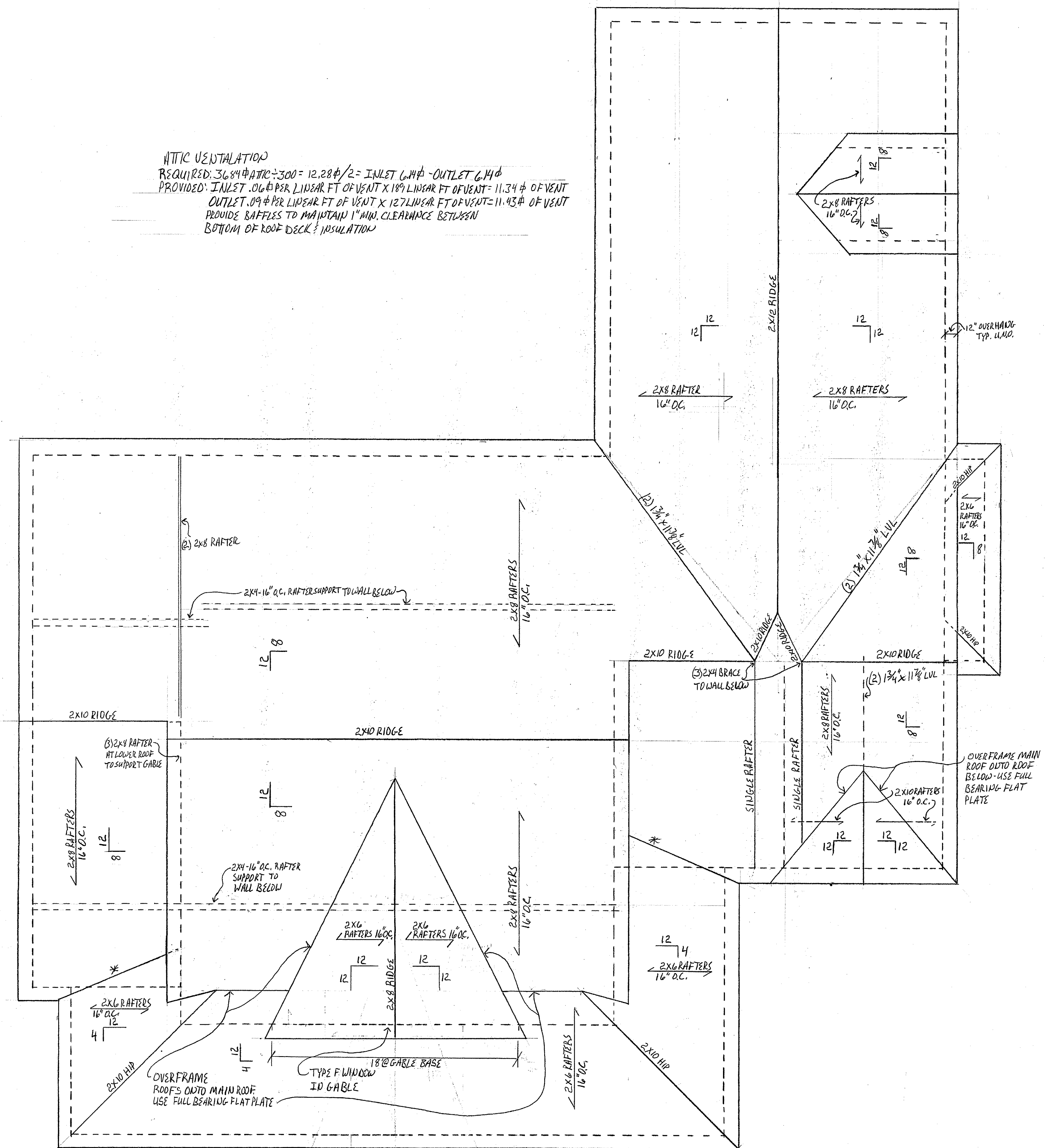
PEYTON & AMBERLY HOME  
 FLOOR PLAN  
 DRAWN BY: WILLIAM JOHNSON  
 SCALE: 1/4" = 1'  
 DATE: JANUARY 5, 2025  
 PAGE: 4 OF 7



PEYTON & AMBERLY HOME

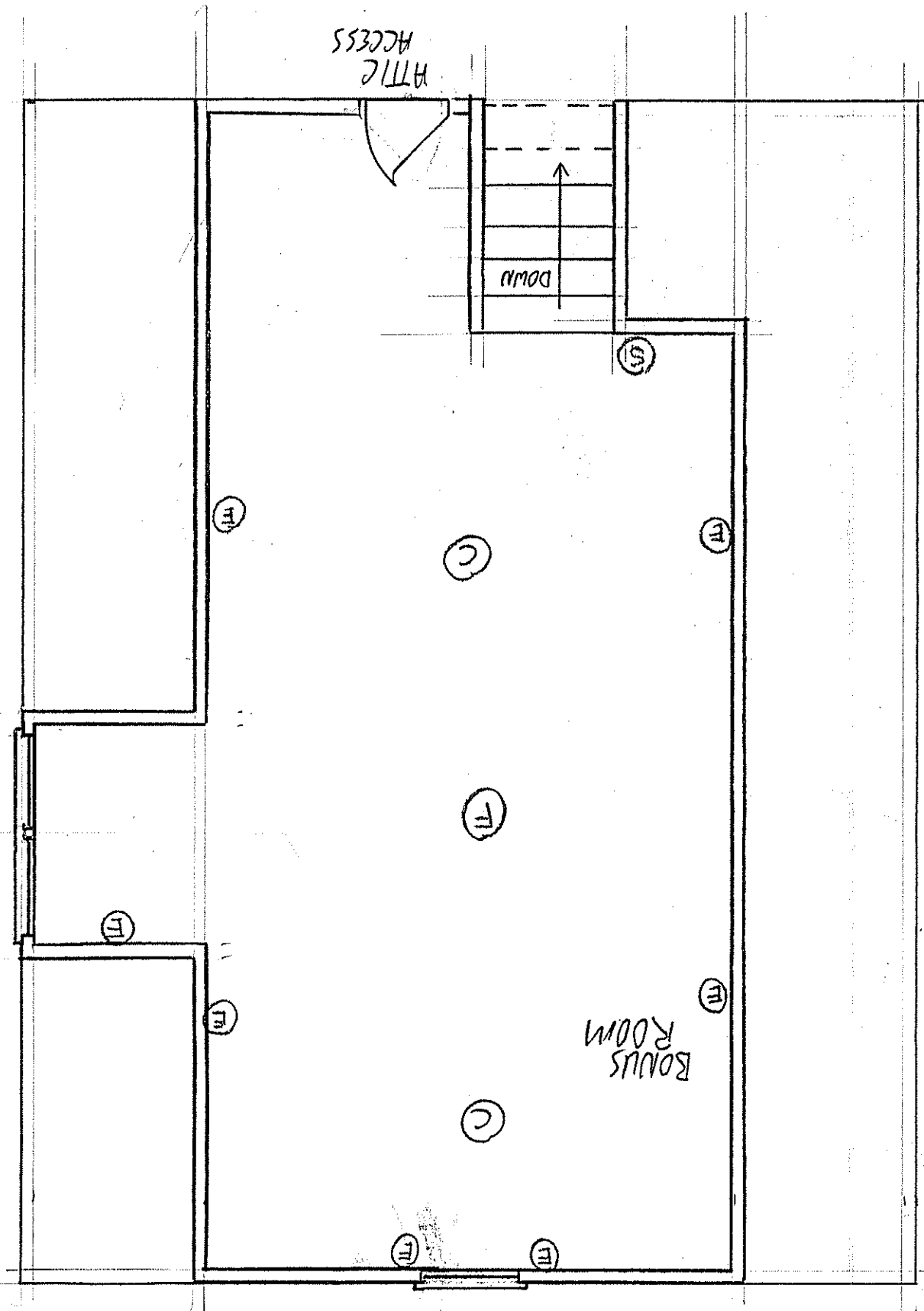
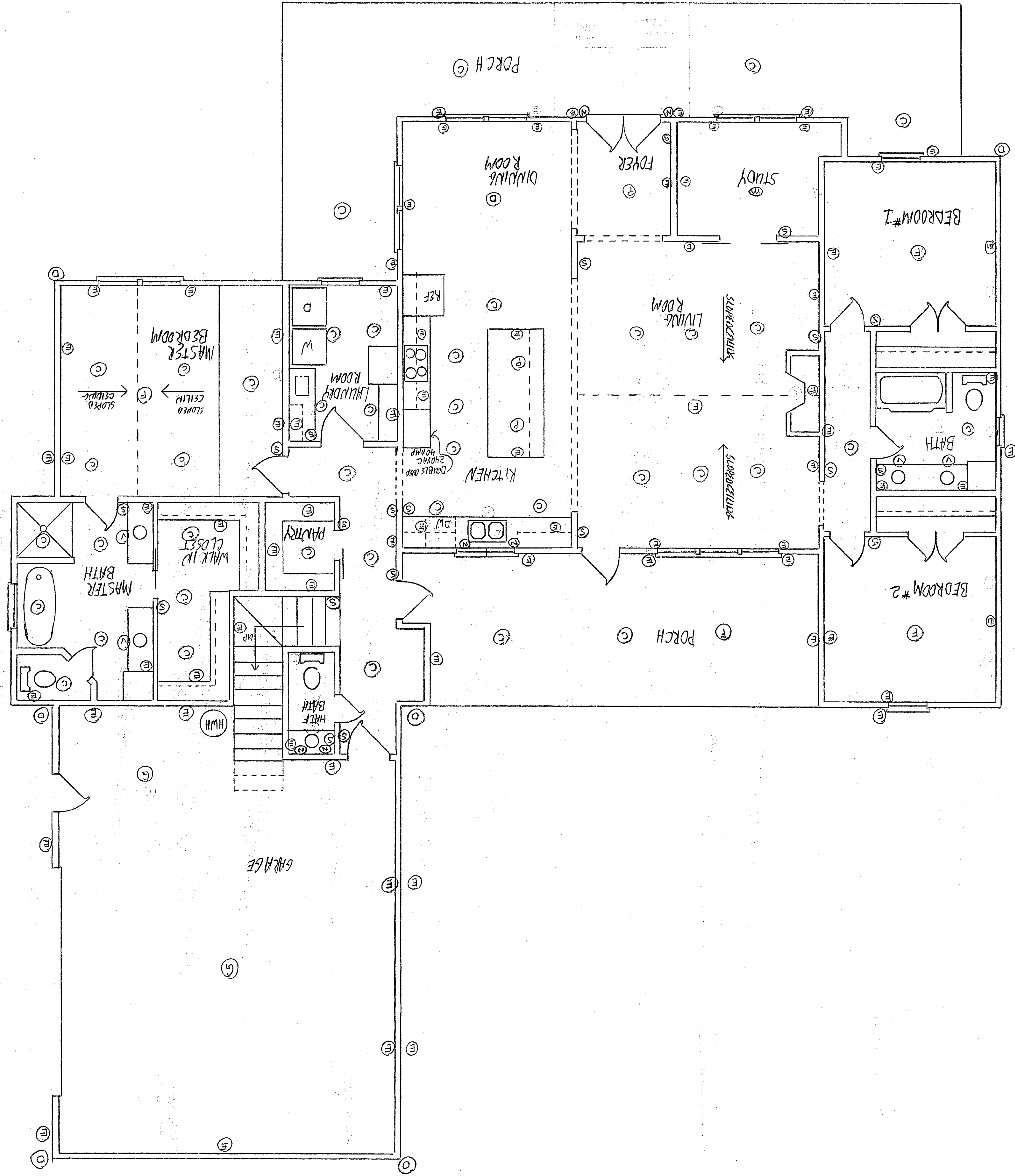
BONUS ROOM LAYOUT & DETAILS  
 DRAWN BY: WILLIAM JOHNSON  
 SCALE: AS NOTED  
 DATE: JANUARY 5, 2025  
 PAGE: 5 OF 7

ATTIC VENTILATION  
 REQUIRED:  $3684 \text{ ft}^2 \div 300 = 12.28 \text{ ft}^2 = \text{INLET } 6.14 \text{ ft}^2 - \text{OUTLET } 6.14 \text{ ft}^2$   
 PROVIDED: INLET:  $.06 \text{ ft}^2 \text{ PER LINEAR FT OF VENT} \times 189 \text{ LINEAR FT OF VENT} = 11.34 \text{ ft}^2 \text{ OF VENT}$   
 OUTLET:  $.09 \text{ ft}^2 \text{ PER LINEAR FT OF VENT} \times 127 \text{ LINEAR FT OF VENT} = 11.43 \text{ ft}^2 \text{ OF VENT}$   
 PROVIDE BAFFLES TO MAINTAIN 1" MIN. CLEARANCE BETWEEN  
 BOTTOM OF ROOF DECK & INSULATION



- ROOF NOTES**
- 2x6 SUBFASCIA AT ALL EAVES & GABLES
  - GABLE OVERHANG SHALL BE BUILT LADDER FRAMED WITH 2x6 BLOCKING NO GREATER THAN 24" O.C. BETWEEN PARALLEL 2x6'S
  - LET-IN 2x4 OUTRIGGERS SHALL BE USED ON GABLES WITH OVERHANGS GREATER THAN 12" AND EXTEND NO LESS THAN 32" INSIDE GABLE
  - RAFTER RIDGE SAT CUTS SHALL BE FULL BEARING
  - ADJUST HEIGHT AT PLATE OF DIFFERENT PITCH ROOFS TO LIE UP SUBFASCIAS
  - NOMINAL 1/2" ROOF DECKING TO BE FASTENED 6" O.C AT EDGES & 12" O.C. IN FIELD WITH 8 PENNY RING SHANK NAILS
  - PROVIDE CONTINUOUS RIDGE VENTILATION UP TO 2' OF THE END OF RIDGE (GABLES HIPS OR VALLEYS)
  - SEE DETAIL FOR RIDGE VENTILATION OVER MASTER BEDROOM

ELECTRICAL NOTES  
 ■ FIXTURE, SWITCH & RECEPTACLE LOCATIONS SHOWN ARE HOME OWNERS  
 REQUEST. THE NORTH CAROLINA STATE ELECTRICAL CODE  
 SHALL TAKE PRECEDENCE  
 UNDER PLAN LIGHT CODE  
 E = ELECTRIC OUTLET  
 C = CEM LIGHT  
 P = PENDANT LIGHT  
 D = CHANDELER LIGHT  
 V = VARY LIGHT  
 N = SLOPE LIGHT  
 M = SEMI-MOUNT HUSH FIXTURE  
 F = CELLING HUY LIGHT  
 S = LIGHT SWITCH  
 D = OUT DOOR FLOOD LIGHT  
 Y = YARD LIGHT (LIGHT POLE)  
 G = GARAGE LIGHT



1