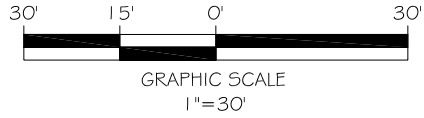


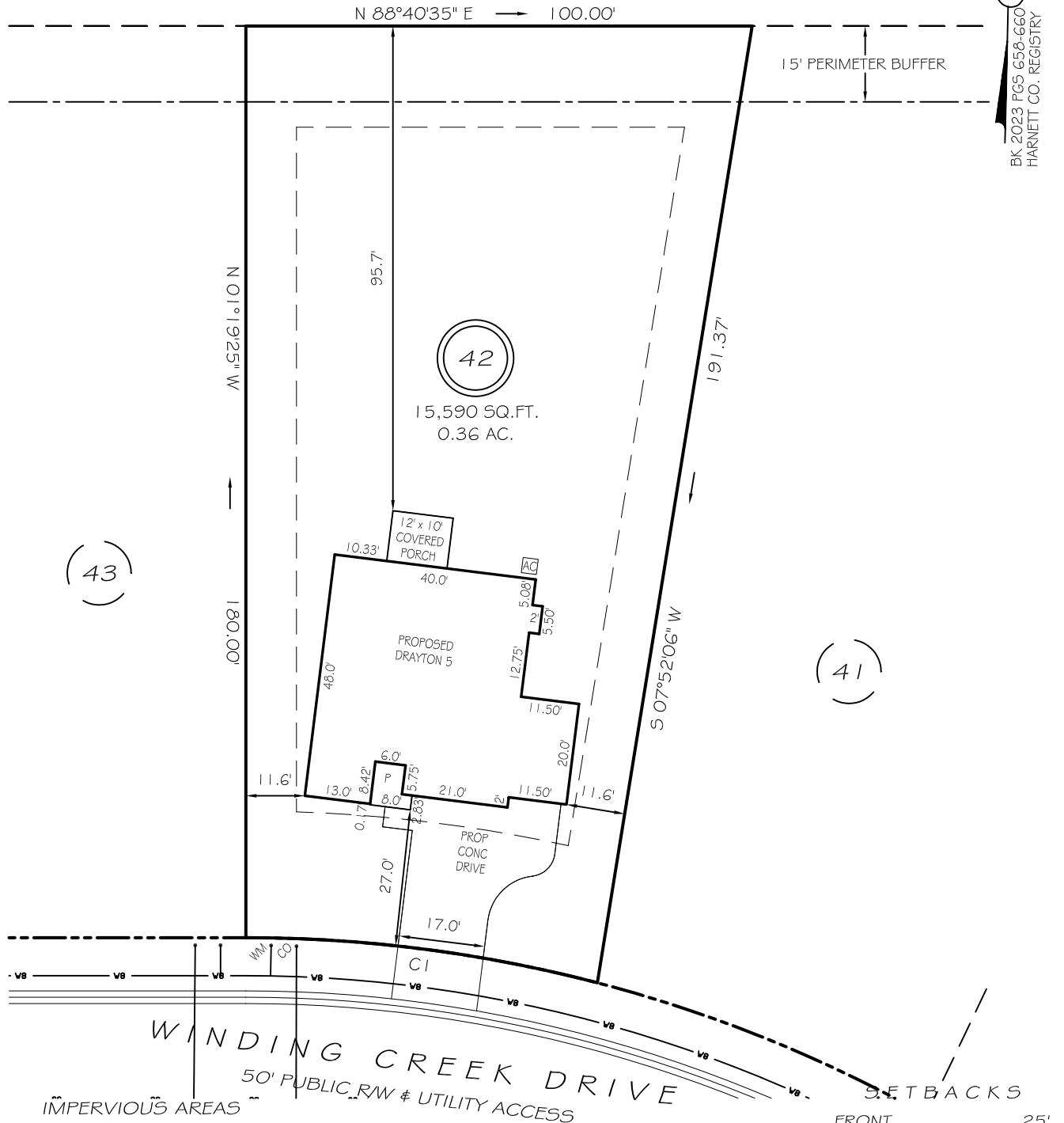
I, MICHAEL P. GRIFFIN, certify that under my direction and supervision this map was drawn from an actual field survey; that the error of closure of the survey as calculated by coordinates is 1: 10,000+; that the area shown hereon was calculated by coordinates. Dashed lines shown hereon were not surveyed.

Witness my hand and seal this day of MONTH 2024.



N/F
HARNETT CENTRAL HOLDERS, LLC
TRACT 4 OF
DB 3734, PG 952
PB 2019, PG 115

BK 2023 PGS 658-660
HARNETT CO. REGISTRY



HOUSE	2232 SQ. FT.
DRIVE & WALKS	717 SQ. FT.
AC PAD	9 SQ. FT.
TOTAL	2958 SQ. FT.
ALLOWED	3800 SQ. FT.

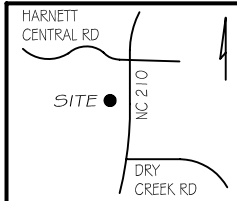
FRONT	25'
REAR	20'
SIDE	10'
CORNER SIDE	20'

CI R=275.00' L=70.19' N84°00'42"W 70.00'

P R E L I M I N A R Y
NOT FOR RECORDATION,
SALES OR CONVEYANCE

LEGEND

EIP	EXISTING IRON PIPE	FES	FLARED END SECTION
IPS	IRON PIPE SET	WM	WATER METER
R/W	RIGHT OF WAY	CO	CLEAN OUT
N/F	NOW OR FORMERLY	FH	FIRE HYDRANT
EIS	EXISTING IRON STAKE	CB	CATCH BASIN



GRIFFIN LAND SURVEYING, INC.

P. O. BOX 148
FUQUAY-VARINA, NC 27526
(919) - 567 - 1963

FIRM LIC.# C-1345

PLOT PLAN
FOR
DRB HOMES
THE FARM AT
NEILLS CREEK
LOT 42

492 WINDING CREEK DRIVE
NORTH CAROLINA

HARNETT COUNTY NEILL'S CREEK TWSHP

DRAWN BY **KDF**

DATE **1/7/25**

CHECKED BY **MPG**

SCALE **1" = 30'**