

PRELIMINARY PLOT PLAN FOR

MUNGO HOMES

LOT 9, LANGDON PRESERVE

89 GROVE TOWNSHIP WAY

REF: B.M. 2024, PG. 588

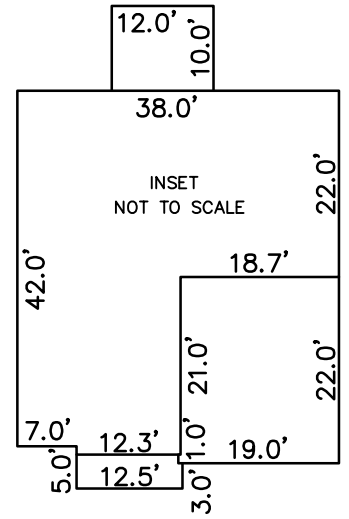
GROVE TOWNSHIP

HARNETT COUNTY, NORTH CAROLINA

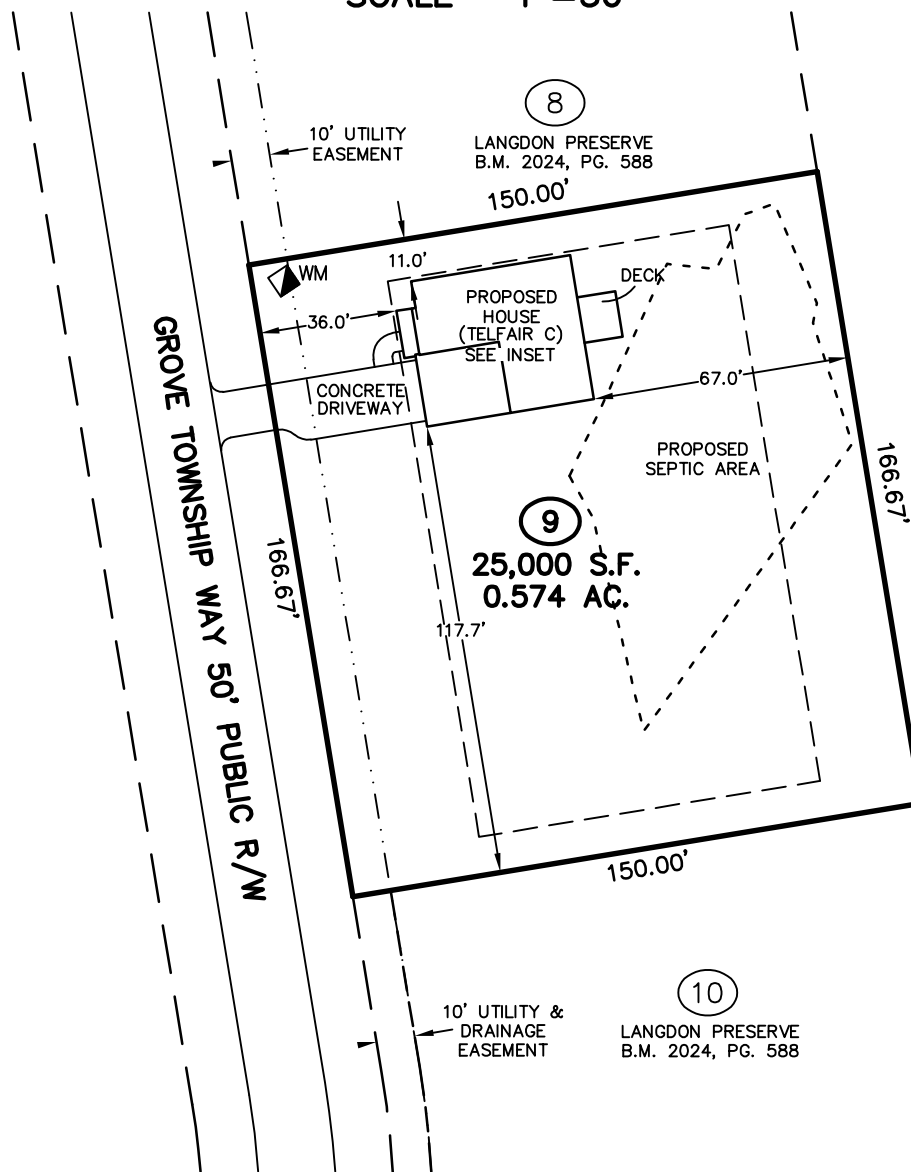
DECEMBER 3, 2024

REVISED DECEMBER 6, 2024

ZONED RA-30



SCALE 1"=50'

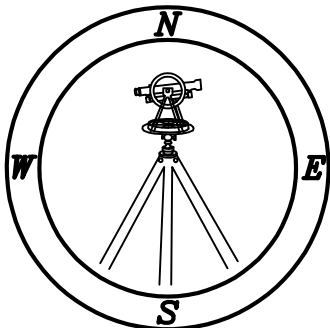


TOTAL CONCRETE	
DECK	120 S.F.
DRIVEWAY	790 S.F.
SIDEWALKS	47 S.F.
TOTAL	957 S.F.

IMPERVIOUS SURFACE TABLE

HOUSE	1,696 S.F.
DECK	120 S.F.
DRIVEWAY	606 S.F.
SIDEWALKS	47 S.F.
MISC/UTILITIES	9 S.F.
TOTAL IMPERVIOUS AREA	2,478 S.F.
TOTAL LOT AREA	25,000 S.F.
PERCENTAGE OF IMPERVIOUS AREA	9.91 %

THIS SURVEYOR DOES NOT WARRANTY THE ACCURACY OF ARCHITECTURAL DIMENSIONS. THEY ARE TO BE VERIFIED BY THE CONTRACTOR.



CMP

Professional Land Surveyors
C-1525

333 S. White Street
Post Office Box 1253
Wake Forest, N.C. 27588
(919)556-3148

NOTES:

-THIS PLAN DOES NOT REFLECT AN ACTUAL SURVEY. IT IS A PRELIMINARY PLAN AND SHOULD BE USED FOR ITS INTENDED PURPOSE ONLY.
-NOT FOR RECORDATION, CONVEYANCES, OR SALES.