

PRELIMINARY PLOT PLAN FOR

# MUNGO HOMES

LOT 16, LANGDON PRESERVE

108 GROVE TOWNSHIP WAY

REF: B.M. 2024, PG. 588

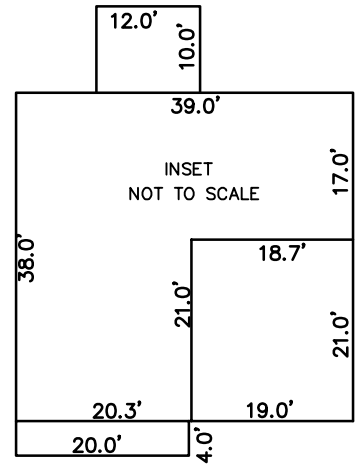
GROVE TOWNSHIP

HARNETT COUNTY, NORTH CAROLINA

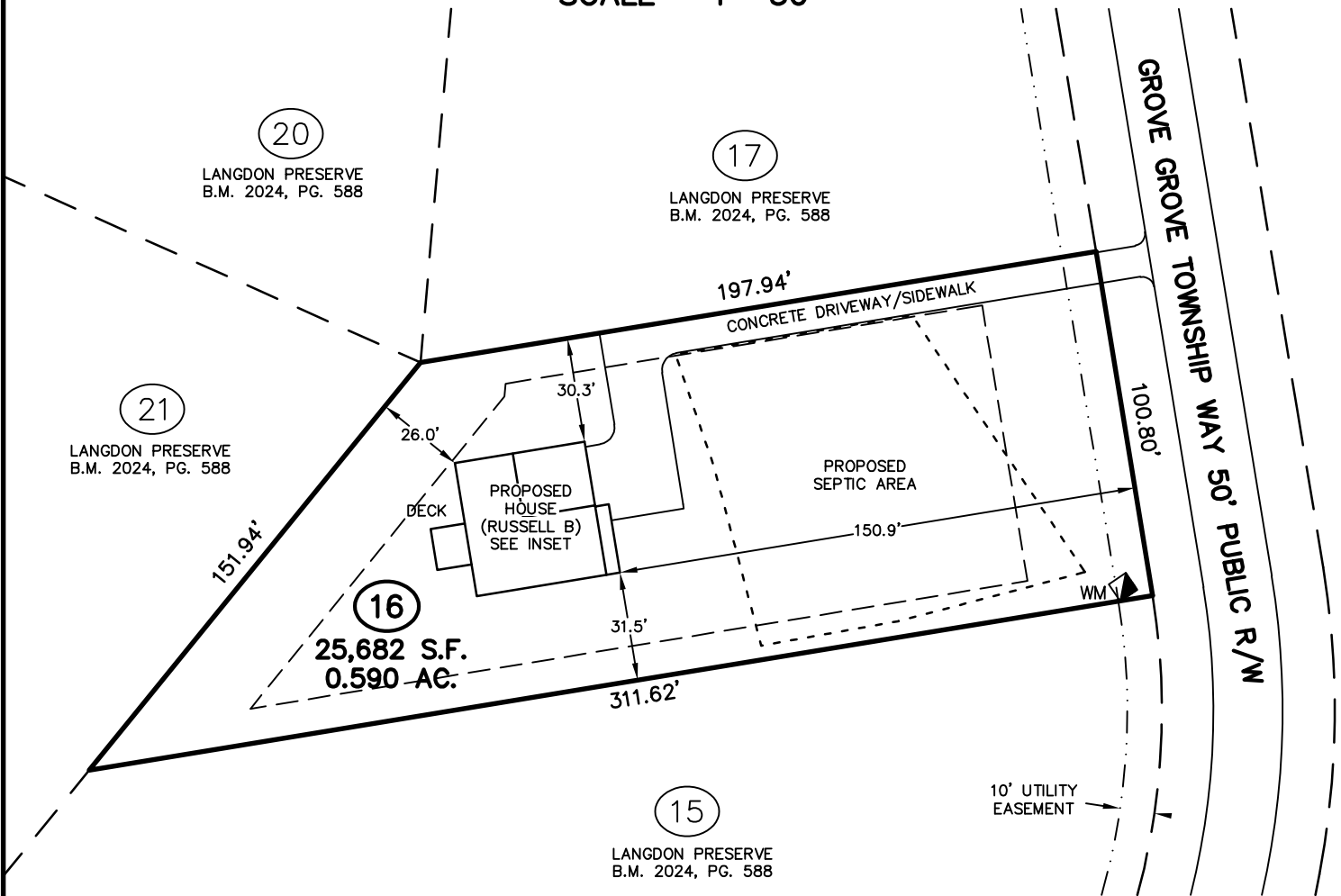
NOVEMBER 22, 2024

REVISED DECEMBER 6, 2024

ZONED RA-30



SCALE 1"=50'

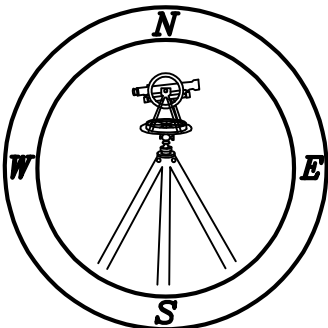


TOTAL CONCRETE	
DECK	120 S.F.
DRIVEWAY/SIDEWALKS	2,361 S.F.
TOTAL	2,481 S.F.

### IMPERVIOUS SURFACE TABLE

HOUSE	1,562 S.F.
DECK	120 S.F.
DRIVEWAY/SIDEWALK	2,221 S.F.
MISC/UTILITIES	9 S.F.
TOTAL IMPERVIOUS AREA	3,912 S.F.
TOTAL LOT AREA	25,862 S.F.
PERCENTAGE OF IMPERVIOUS AREA	15.12 %

THIS SURVEYOR DOES NOT WARRANT THE ACCURACY OF ARCHITECTURAL DIMENSIONS. THEY ARE TO BE VERIFIED BY THE CONTRACTOR.



# CMP

Professional Land Surveyors  
C-1525

333 S. White Street  
Post Office Box 1253  
Wake Forest, N.C. 27588  
(919)556-3148

### NOTES:

-THIS PLAN DOES NOT REFLECT AN ACTUAL SURVEY. IT IS A PRELIMINARY PLAN AND SHOULD BE USED FOR ITS INTENDED PURPOSE ONLY.

-NOT FOR RECORDATION, CONVEYANCES, OR SALES.