

PRELIMINARY PLOT PLAN FOR

# MUNGO HOMES

LOT 11, LANGDON PRESERVE

139 GROVE TOWNSHIP WAY

REF: B.M. 2024, PG. 588

GROVE TOWNSHIP

HARNETT COUNTY, NORTH CAROLINA

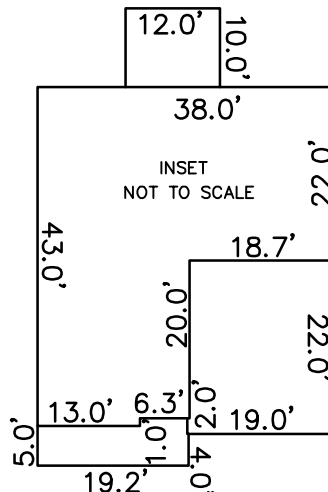
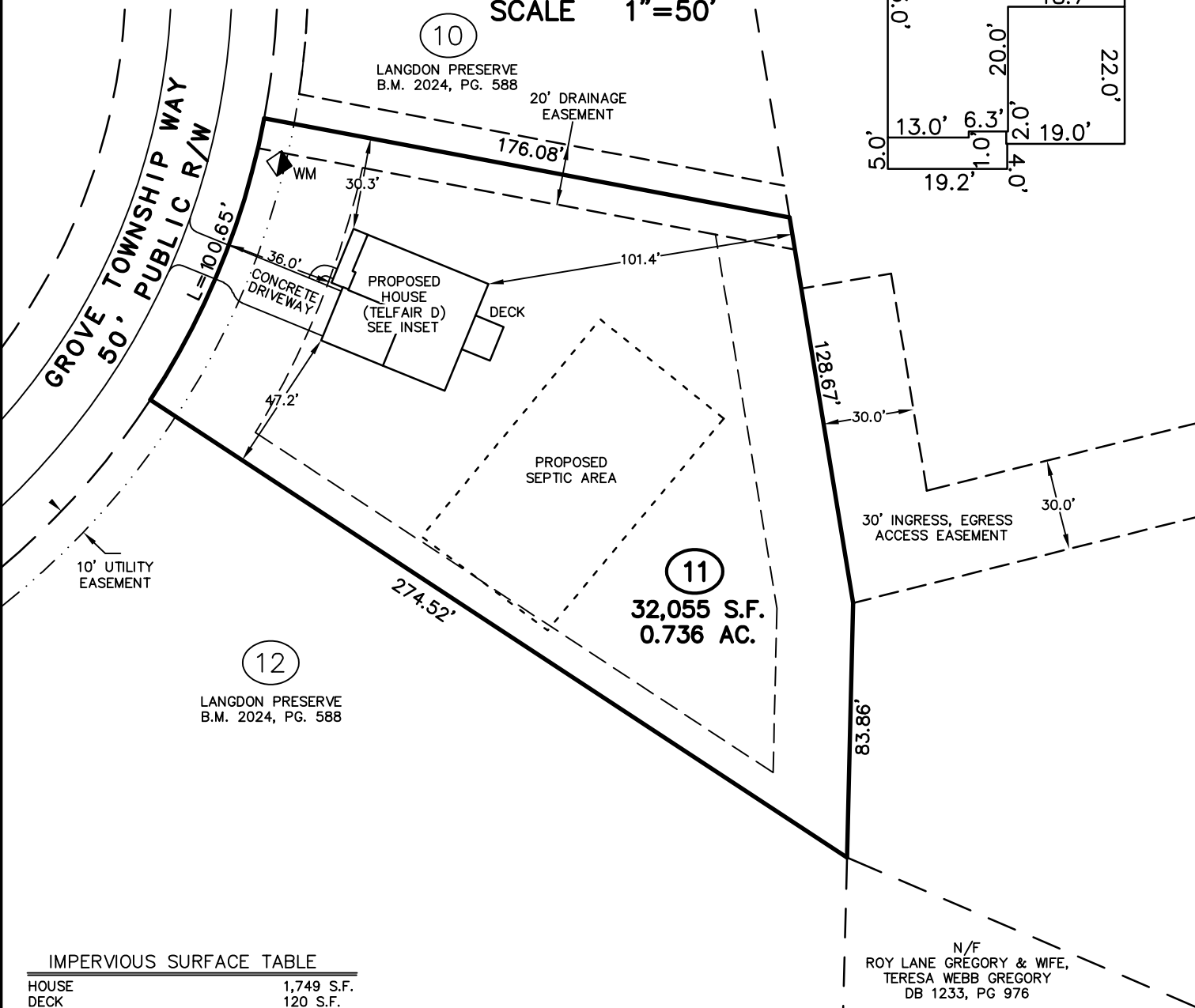
NOVEMBER 22, 2024

REVISED DECEMBER 6, 2024

ZONED RA-30



SCALE 1"=50'



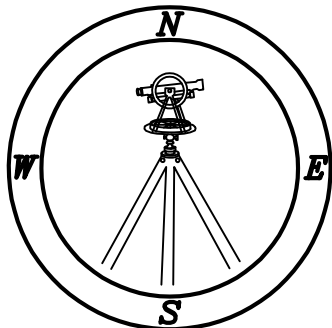
IMPERVIOUS SURFACE TABLE

HOUSE	1,749 S.F.
DECK	120 S.F.
DRIVEWAY	610 S.F.
SIDEWALKS	32 S.F.
MISC/UTILITIES	9 S.F.
<b>TOTAL IMPERVIOUS AREA</b>	<b>2,520 S.F.</b>
<b>TOTAL LOT AREA</b>	<b>32,055 S.F.</b>
<b>PERCENTAGE OF IMPERVIOUS AREA</b>	<b>7.86 %</b>

TOTAL CONCRETE	
DECK	120 S.F.
DRIVEWAY	797 S.F.
SIDEWALKS	32 S.F.
<b>TOTAL</b>	<b>949 S.F.</b>

N/F  
ROY LANE GREGORY & WIFE,  
TERESA WEBB GREGORY  
DB 1233, PG 976

THIS SURVEYOR DOES NOT WARRANTY THE ACCURACY OF ARCHITECTURAL DIMENSIONS. THEY ARE TO BE VERIFIED BY THE CONTRACTOR.



# CMP

Professional Land Surveyors  
C-1525

333 S. White Street  
Post Office Box 1253  
Wake Forest, N.C. 27588  
(919)556-3148

**NOTES:**  
-THIS PLAN DOES NOT REFLECT AN ACTUAL SURVEY. IT IS A PRELIMINARY PLAN AND SHOULD BE USED FOR ITS INTENDED PURPOSE ONLY.  
-NOT FOR RECORDATION, CONVEYANCES, OR SALES.