

PRELIMINARY PLOT PLAN FOR

# MUNGO HOMES

LOT 10, LANGDON PRESERVE

119 GROVE TOWNSHIP WAY

REF: B.M. 2024, PG. 588

GROVE TOWNSHIP

HARNETT COUNTY, NORTH CAROLINA

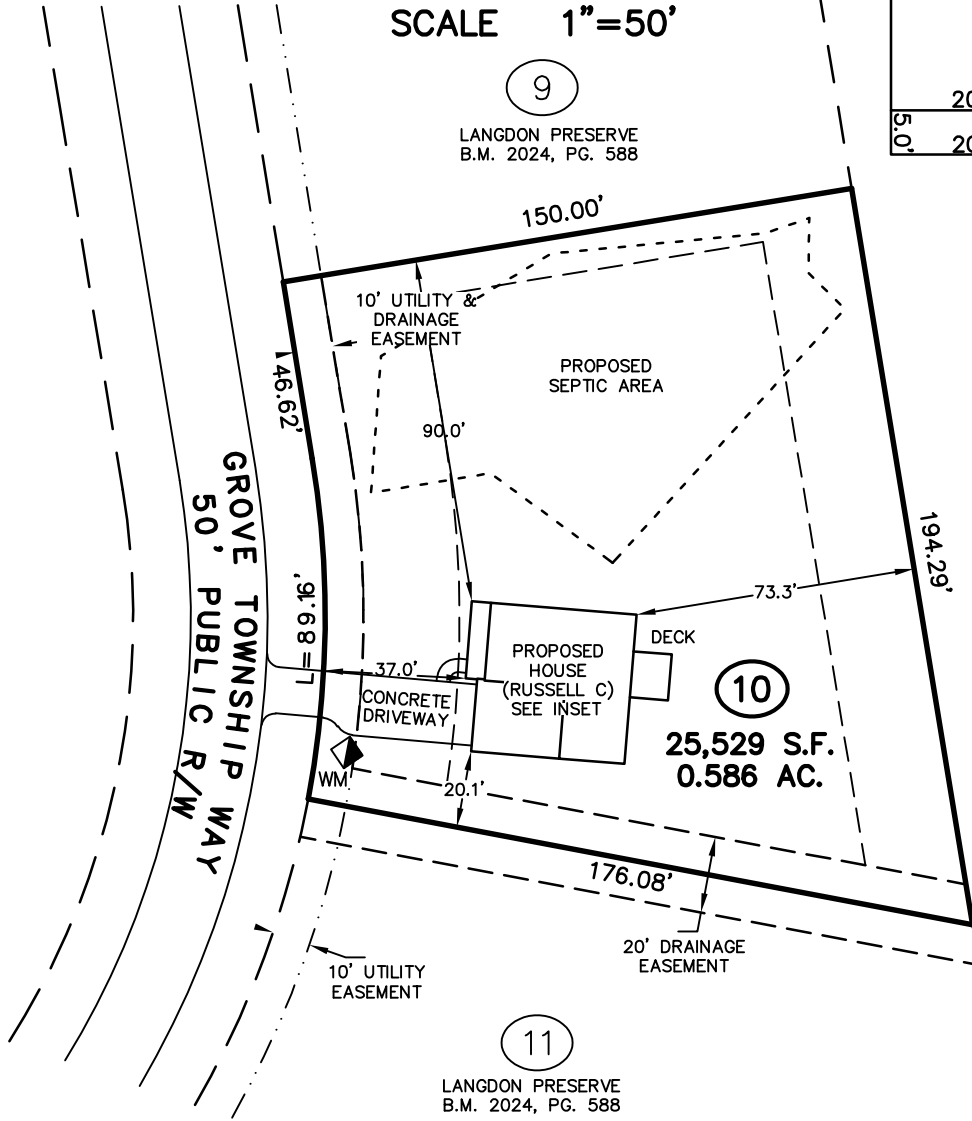
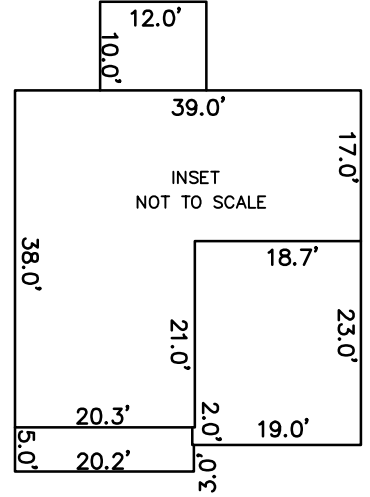
NOVEMBER 22, 2024

REVISED DECEMBER 6, 2024

ZONED RA-30



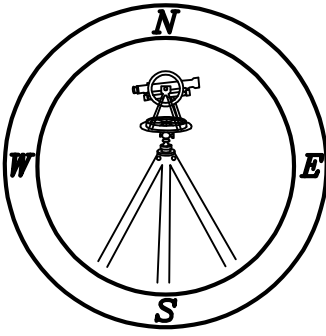
SCALE 1"=50'



TOTAL CONCRETE	
DECK	120 S.F.
DRIVEWAY	805 S.F.
SIDEWALKS	32 S.F.
TOTAL	957 S.F.

IMPERVIOUS SURFACE TABLE	
HOUSE	1,620 S.F.
DECK	120 S.F.
DRIVEWAY	620 S.F.
SIDEWALKS	32 S.F.
MISC/UTILITIES	9 S.F.
TOTAL IMPERVIOUS AREA	2,401 S.F.
TOTAL LOT AREA	25,529 S.F.
PERCENTAGE OF IMPERVIOUS AREA	9.40 %

THIS SURVEYOR DOES NOT WARRANTY THE ACCURACY OF ARCHITECTURAL DIMENSIONS. THEY ARE TO BE VERIFIED BY THE CONTRACTOR.



## CMP

Professional Land Surveyors  
C-1525  
333 S. White Street  
Post Office Box 1253  
Wake Forest, N.C. 27588  
(919)556-3148

**NOTES:**  
-THIS PLAN DOES NOT REFLECT AN ACTUAL SURVEY. IT IS A PRELIMINARY PLAN AND SHOULD BE USED FOR ITS INTENDED PURPOSE ONLY.  
-NOT FOR RECORDATION, CONVEYANCES, OR SALES.