

ADDRESS: 236 ALDEN WAY
 PLAT BOOK 2024, PG'S 506-510

AREA: 50,612 S.F. ~ 1.162 ACRES

SITE DATA TABLE:

ZONING : RA-30
 ZONING CONDITIONS: -
 OVERLAY DISTRICT: 0
 CURRENT USE: VACANT
 BUILDING SF: 2,491

FRONT YARD: 26,580 SF
 DRIVE: 5,034 SF
 DRIVE %: 19.0 %


FLOOD NOTE: This property lies within flood zone "X" according to FEMA FIRM# 3720068200J, effective on 10/3/2006.

HOUSE PLAN INFO (FOR CLIENT USE)

PLAN NAME: _____
 STORIES: ____ FOUNDATION: SLAB CRAWL BSMT
 FACADE: VINYL HARDY BRICK STONE OTHER
 PLAN OPTIONS: _____
 SLAB SF: _____ TOTAL SF: _____ MEAN HEIGHT: _____

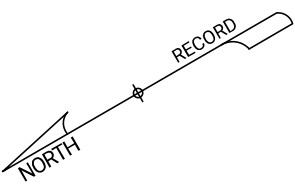
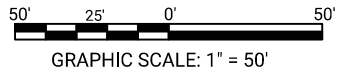
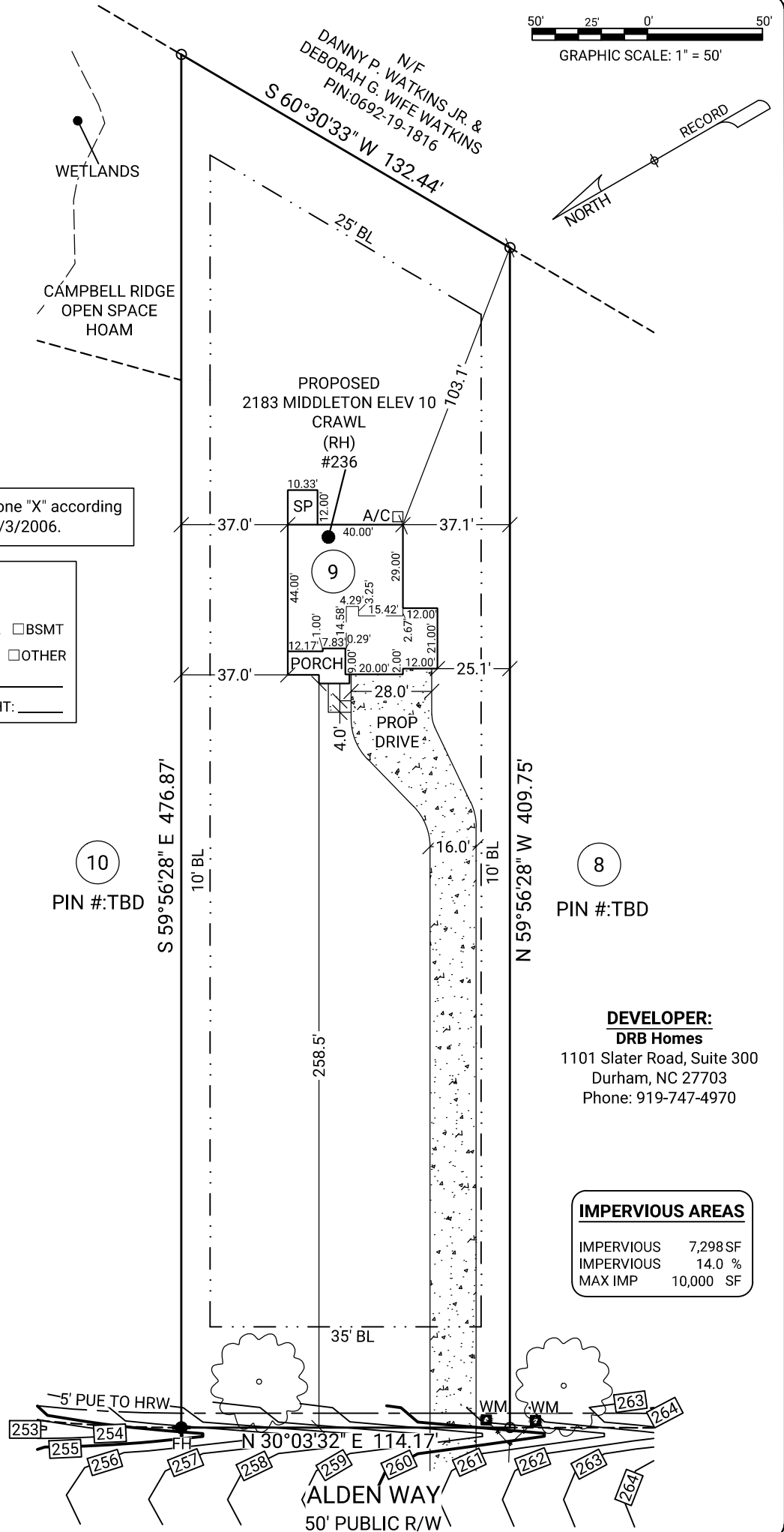
LEGEND:

- BL Building Line
- DE Drainage Easement
- PRDE Private Drainage Easement
- PUE Permanent Utility Easement
- PAE Public Access Easement
- HOAM Homeowner Association Maintained
- HRW Harnett Regional Water
- CB Catch Basin
- POR Porch
- DK Deck
- PAT Patio
- FH Fire Hydrant
- WM Water Meter
- P Porch
- SP Screened Porch
- PROP Proposed
- N/F Now or Formerly
- A/C Air Conditioning
- R/W Right of Way
- PIN Parcel Identification Number
- TBD To Be Determined
- (P) Platted
- (M) Measured
- NTS Not to Scale
- P.999 Proposed Grade
- 999 Existing Grade
- Front Grassed Area

 2" CALIPER 6'-8' MIN. HEIGHT
 NUTTALL OAK
 QUERCUS NATTALLII

REVISION CHART

DATE	DESCRIPTION
12/10/24	DRIVE SHIFTED



10
 PIN #: TBD

8
 PIN #: TBD

DEVELOPER:
DRB Homes
 1101 Slater Road, Suite 300
 Durham, NC 27703
 Phone: 919-747-4970

IMPERVIOUS AREAS
 IMPERVIOUS 7,298 SF
 IMPERVIOUS 14.0 %
 MAX IMP 10,000 SF

GENERAL NOTES: No field work has been performed. This Map or Plat is subject to any additional easements or restrictions of record. Contact utility contractor for location prior to construction (if applicable). This plat is for exclusive use by client. Use by third parties is at their own risk. Dimensions from house to property lines should not be used to establish fences. City sidewalks, driveway approaches, and other improvements inside the city's right of way are provided for demonstration purposes only. consult the development plans for actual construction. This plat has been calculated for closure and is found to be accurate within one foot in 10,000+ feet.

BUILDING SETBACKS:
 Front: 35'
 Rear: 25'
 Side: 10'
 Corner: 20'

SUB: Campbell Ridge
LOT: 9
 Angier, Harnett County, North Carolina

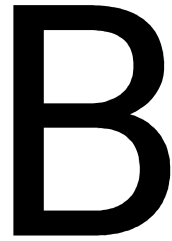


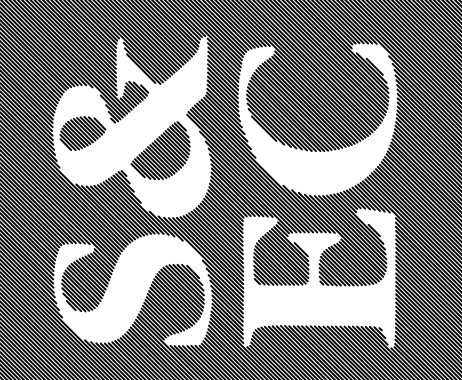
DRB GROUP OF NORTH CAROLINA, LLC.

PLAT DATE: 12/10/2024
 20241202985 FC: N/A



Corporate Headquarters:
 1735 North Brown Road, Suite 400
 Lawrenceville, GA 30043
 866.637.1048
 FIRM LICENSE: F-1461

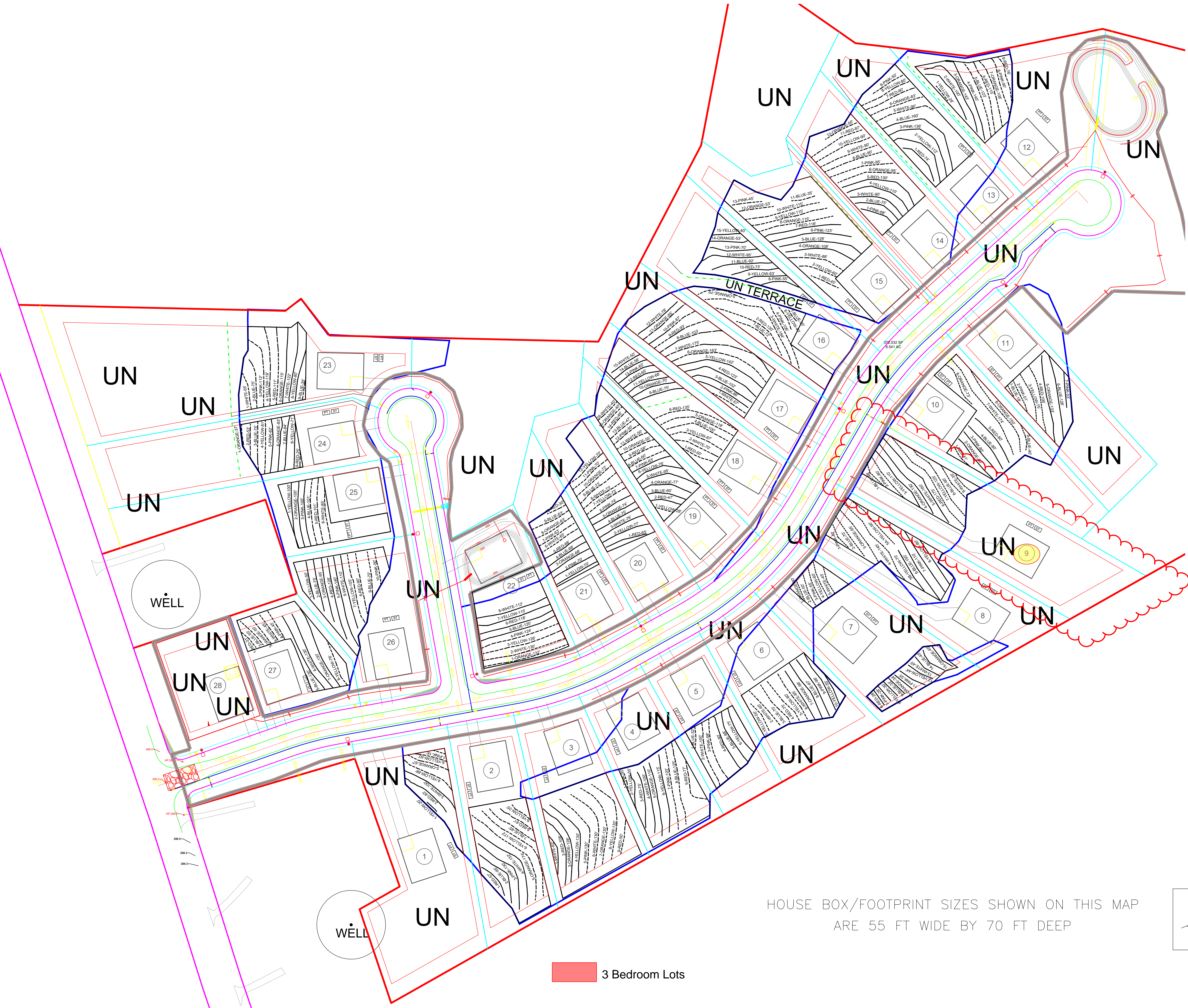




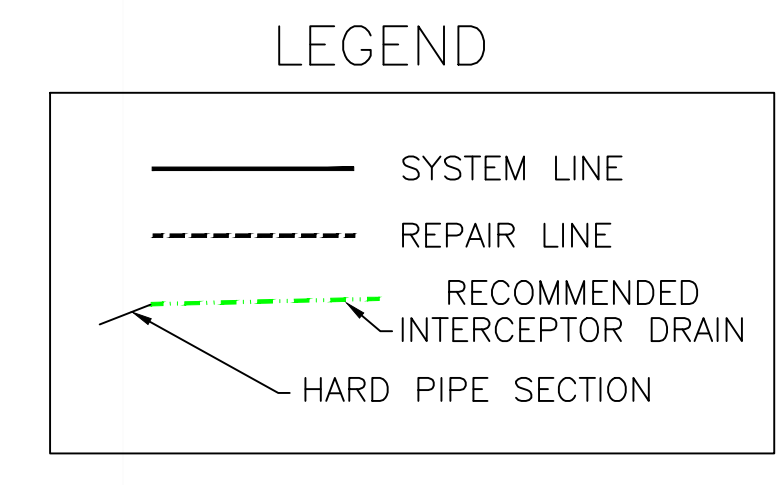
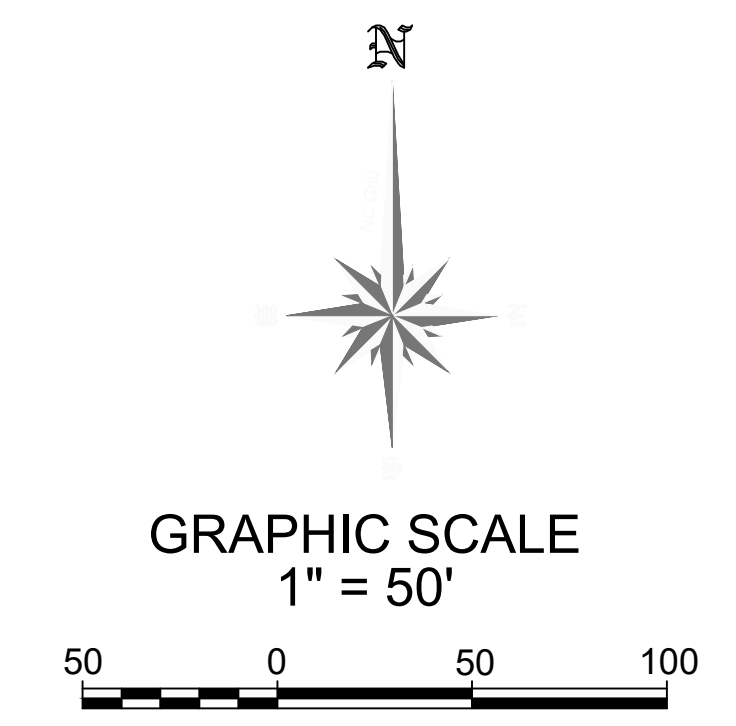
Location: HARNETT CO., NC
 Client: FUTRELL DEVELOPMENT

Project: CAMPBELL RIDGE SUBDIVISION
 OLD STAGE ROAD
 Sheet Title: PRELIMINARY FIELD SEPTIC LAYOUTS MAP

Project No.: 14719.52
 Project Manager: RP
 Drawn: CC, MB
 Field Work: RP, CC, JM, MB
 Date: SEPT. 17, 2024
 Sheet No.: 1 of 1



HOUSE BOX/FOOTPRINT SIZES SHOWN ON THIS MAP
 ARE 55 FT WIDE BY 70 FT DEEP



NOTES:

- 1) SITE DATA TO INCLUDE PROPERTY BOUNDARIES, STRUCTURE LOCATION, UTILITIES, ROADS, AND OTHER SITE FEATURES WERE PROVIDED BY CLIENT AND ARE SHOWN TO DISPLAY GENERAL SITE CONDITIONS.
- 2) ALL LOCATIONS, ELEVATIONS, AND DIMENSIONS ARE APPROXIMATE AND AS SUCH NO SPECIFIC ACCURACY OTHER VERTICAL OR HORIZONTAL IS IMPLIED. SEPTIC BEDROOM COUNT, SEPTIC TYPE, AND SEPTIC DISTRIBUTION METHOD MAY VARY FROM SUBDIVISION RECOMMENDATION TO SEPTIC PERMITTING BASED ON INDIVIDUAL FINAL HOUSE/LOT PLAN IMPROVEMENTS AND INDIVIDUAL LOT EVALUATIONS FOR SEPTIC PERMITTING BY A LIS AND/OR LUG.
- 3) THIS MAP AND CORRESPONDING SITE EVALUATION IS NOT CONFORMANT TO THE ENGINEERING PERMIT SCOPES 42 H0800, OR HAVE PRIVATE SEPTIC PERMITTING PROCESS. ADDITIONAL SITE TESTING AND EVALUATIONS WILL BE REQUIRED TO UTILIZE A PRIVATE SEPTIC PERMITTING PROCESS OR OBTAIN SEPTIC PERMITS FROM THE LUG.
- 4) PROPERTY AND EASEMENT BOUNDARIES SHOWN ON THIS SITE SKETCH ARE APPROXIMATE AND ARE NOT INTENDED FOR LOCATING PROPERTY OR IDENTIFYING PROPERTY OR EASEMENT CORNERS. THIS IS NOT A SURVEY.

3 Bedroom Lots

****LOT 28****
 DOESN'T WORK FOR ON-SITE SEPTIC.
 SOILS ON THIS LOT WERE DISTURBED
 DURING SUBDIVISION CONSTRUCTION

<p>LOT 1 3-BEDROOM PRESSURE MANIFOLD SYSTEM LINES 1-3 HORIZONTAL PANEL BLOCK (PPBPS) 3-BEDROOM PRESSURE MANIFOLD REPAIR LINES 4-7 HORIZONTAL PANEL BLOCK (PPBPS)</p>	<p>LOT 2 4-BEDROOM PRESSURE MANIFOLD SYSTEM LINES 1-4 ACCEPTED 25% RED. 4-BEDROOM PRESSURE MANIFOLD REPAIR LINES 5-9 ACCEPTED 25% RED.</p>	<p>LOT 3 4-BEDROOM PRESSURE MANIFOLD SYSTEM LINES 1-4 ACCEPTED 25% RED. 4-BEDROOM PRESSURE MANIFOLD REPAIR LINES 5-9 ACCEPTED 25% RED.</p>	<p>LOT 4 4-BEDROOM PRESSURE MANIFOLD SYSTEM LINES 2-6 ACCEPTED 25% RED. 4-BEDROOM PRESSURE MANIFOLD REPAIR LINES 1,7-9 HORIZONTAL PANEL BLOCK (PPBPS)</p>	<p>LOT 5 3-BEDROOM PRESSURE MANIFOLD SYSTEM LINES 4-6 HORIZONTAL PANEL BLOCK (PPBPS) 3-BEDROOM PRESSURE MANIFOLD REPAIR LINES 1-3 HORIZONTAL PANEL BLOCK (PPBPS)</p>	<p>LOT 6 4-BEDROOM PRESSURE MANIFOLD SYSTEM LINES 6-10 ACCEPTED 25% RED. 4-BEDROOM PRESSURE MANIFOLD REPAIR LINES 1-5 HORIZONTAL PANEL BLOCK (PPBPS)</p>	<p>LOT 7 3-BEDROOM PRESSURE MANIFOLD SYSTEM LINES 6-15 ACCEPTED 25% RED. 3-BEDROOM PRESSURE MANIFOLD REPAIR LINES 1-5 HORIZONTAL PANEL BLOCK (PPBPS)</p>	<p>LOT 8 3-BEDROOM PRESSURE MANIFOLD SYSTEM LINES 5B-8 LOW PROFILE CHAMBER 3-BEDROOM PRESSURE MANIFOLD REPAIR LINES 1-5A LOW PROFILE CHAMBER</p>	<p>LOT 9 3-BEDROOM PRESSURE MANIFOLD SYSTEM LINES 3-5 LOW PROFILE CHAMBER 3-BEDROOM PRESSURE MANIFOLD REPAIR LINES 1,2,6-9 LOW PROFILE CHAMBER</p>
<p>LOT 10 3-BEDROOM PRESSURE MANIFOLD SYSTEM LINES 2-5 ACCEPTED 25% RED. 3-BEDROOM PRESSURE MANIFOLD REPAIR LINES 1,6-9 LOW PROFILE CHAMBER</p>	<p>LOT 11 3-BEDROOM PRESSURE MANIFOLD SYSTEM LINES 5-7 ACCEPTED 25% RED. 3-BEDROOM PRESSURE MANIFOLD REPAIR LINES 1-4 HORIZONTAL PANEL BLOCK (PPBPS)</p>	<p>LOT 12 4-BEDROOM PRESSURE MANIFOLD SYSTEM LINES 2-4 ACCEPTED 25% RED. 4-BEDROOM PRESSURE MANIFOLD REPAIR LINES 1,5-9 HORIZONTAL PANEL BLOCK (PPBPS)</p>	<p>LOT 13 4-BEDROOM PRESSURE MANIFOLD SYSTEM LINES 1-4 ACCEPTED 25% RED. 4-BEDROOM PRESSURE MANIFOLD REPAIR LINES 5-9 HORIZONTAL PANEL BLOCK (PPBPS)</p>	<p>LOT 14 4-BEDROOM PRESSURE MANIFOLD SYSTEM LINES 1-5 ACCEPTED 25% RED. 4-BEDROOM PRESSURE MANIFOLD REPAIR LINES 6-12 ACCEPTED 25% RED.</p>	<p>LOT 15 4-BEDROOM PRESSURE MANIFOLD SYSTEM LINES 4-7 ACCEPTED 25% RED. 4-BEDROOM PRESSURE MANIFOLD REPAIR LINES 1-3,8-13 ACCEPTED 25% RED.</p>	<p>LOT 16 4-BEDROOM PRESSURE MANIFOLD SYSTEM LINES 8-15 ACCEPTED 25% RED. 4-BEDROOM PRESSURE MANIFOLD REPAIR LINES 1-7 ACCEPTED 25% RED.</p>	<p>LOT 17 4-BEDROOM PRESSURE MANIFOLD SYSTEM LINES 2-5 ACCEPTED 25% RED. 4-BEDROOM PRESSURE MANIFOLD REPAIR LINES 1,6-12 ACCEPTED 25% RED.</p>	<p>LOT 18 4-BEDROOM PRESSURE MANIFOLD SYSTEM LINES 9-15 ACCEPTED 25% RED. 4-BEDROOM PRESSURE MANIFOLD REPAIR LINES 1-6 ACCEPTED 25% RED.</p>
<p>LOT 19 4-BEDROOM PRESSURE MANIFOLD SYSTEM LINES 2-7 ACCEPTED 25% RED. 4-BEDROOM PRESSURE MANIFOLD REPAIR LINES 1,8-16 ACCEPTED 25% RED.</p>	<p>LOT 20 4-BEDROOM PRESSURE MANIFOLD SYSTEM LINES 1-6 ACCEPTED 25% RED. 4-BEDROOM PRESSURE MANIFOLD REPAIR LINES 7-12 ACCEPTED 25% RED.</p>	<p>LOT 21 3-BEDROOM PRESSURE MANIFOLD SYSTEM LINES 1-5 ACCEPTED 25% RED. 3-BEDROOM PRESSURE MANIFOLD REPAIR LINES 6-10 HORIZONTAL PANEL BLOCK (PPBPS)</p>	<p>LOT 22 4-BEDROOM PRESSURE MANIFOLD SYSTEM LINES 5-8 ACCEPTED 25% RED. 4-BEDROOM PRESSURE MANIFOLD REPAIR LINES 1-4 ACCEPTED 25% RED.</p>	<p>LOT 23 4-BEDROOM PRESSURE MANIFOLD SYSTEM LINES 6-8 ACCEPTED 25% RED. 4-BEDROOM PRESSURE MANIFOLD REPAIR LINES 1-5,9 ACCEPTED 25% RED.</p>	<p>LOT 24 3-BEDROOM PRESSURE MANIFOLD SYSTEM LINES 5-8 ACCEPTED 25% RED. 3-BEDROOM PRESSURE MANIFOLD REPAIR LINES 1-4,9 HORIZONTAL PANEL BLOCK (PPBPS)</p>	<p>LOT 25 4-BEDROOM PRESSURE MANIFOLD SYSTEM LINES 1-3 ACCEPTED 25% RED. 4-BEDROOM PRESSURE MANIFOLD REPAIR LINES 4-6 HORIZONTAL PANEL BLOCK (PPBPS)</p>	<p>LOT 26 4-BEDROOM PRESSURE MANIFOLD SYSTEM LINES 1-6 LOW PROFILE CHAMBER 4-BEDROOM PRESSURE MANIFOLD REPAIR LINES 7-10 HORIZONTAL PANEL BLOCK (PPBPS)</p>	<p>LOT 27 4-BEDROOM PRESSURE MANIFOLD SYSTEM LINES 5-7 ACCEPTED 25% RED. 4-BEDROOM PRESSURE MANIFOLD REPAIR LINES 1-4,8 HORIZONTAL PANEL BLOCK (PPBPS)</p>