

Professional Land Surveyors
 C-1525
 333 S. White Street
 Post Office Box 1253
 Wake Forest, N.C. 27588
 (919)556-3148



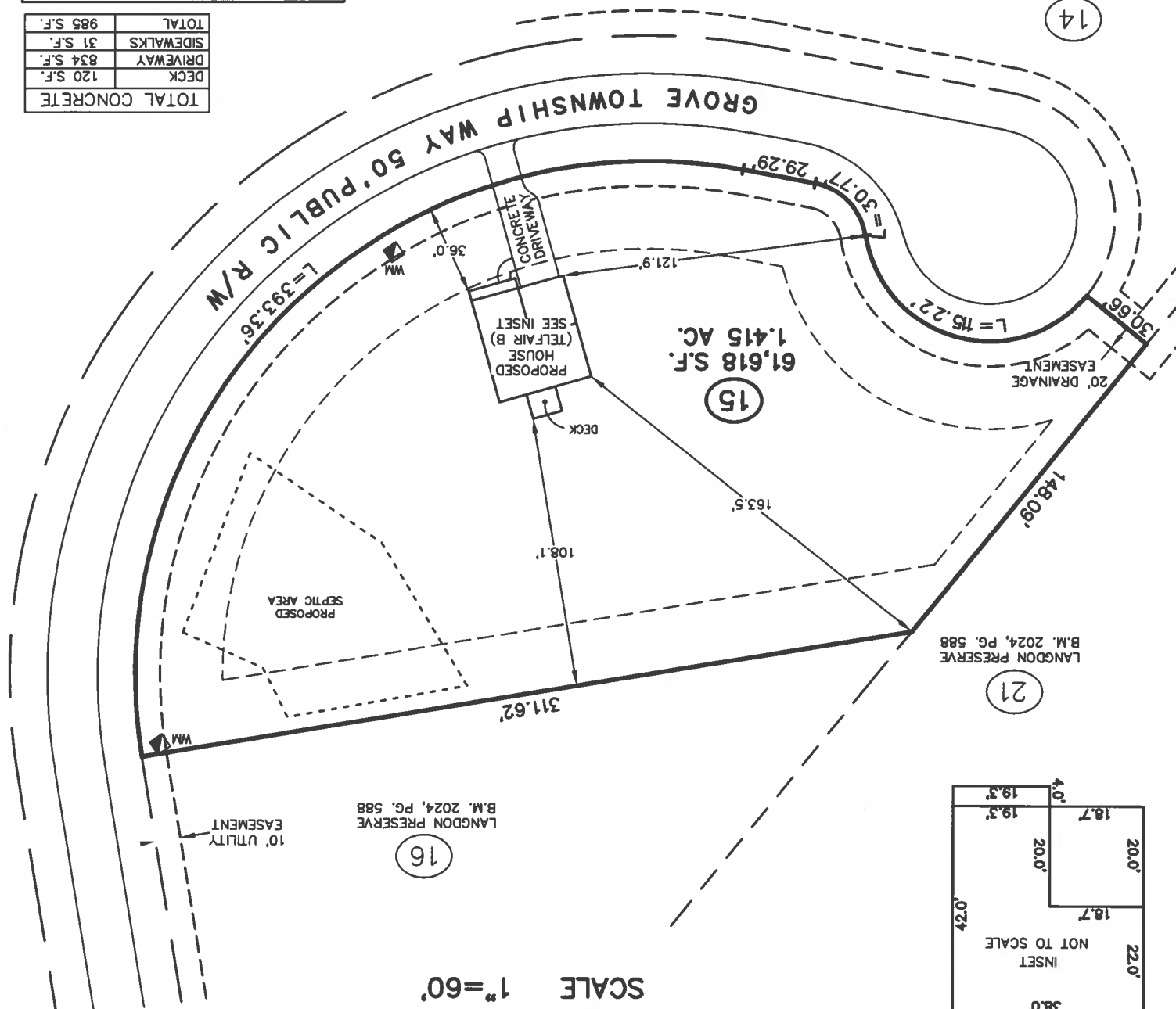
NOTES:
 -THIS PLAN DOES NOT REFLECT AN
 ACTUAL SURVEY. IT IS A PRELIMINARY
 PLAN AND SHOULD BE USED FOR ITS
 INTENDED PURPOSE ONLY.
 -NOT FOR RECORDATION, CONVEYANCES,
 OR SALES.

LANGDON PRESERVE
 B.M. 2024, PG. 588

14

THIS SURVEYOR DOES NOT
 WARRANT THE ACCURACY
 OF ARCHITECTURAL DIMENSIONS.
 THEY ARE TO BE VERIFIED BY
 THE CONTRACTOR.

TOTAL CONCRETE	120 S.F.
DECK	120 S.F.
DRIVEWAY	834 S.F.
SIDEWALKS	31 S.F.
TOTAL	985 S.F.

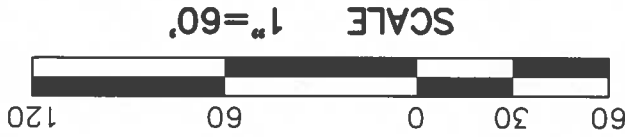
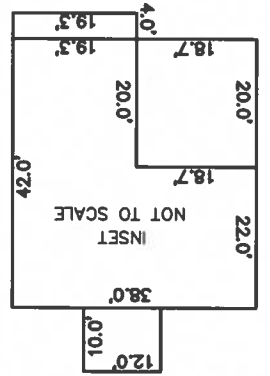


LANGDON PRESERVE
 B.M. 2024, PG. 588

21

LANGDON PRESERVE
 B.M. 2024, PG. 588

16



ZONED RA-30
 REVISED DECEMBER 6, 2024
 NOVEMBER 22, 2024

HARNETT COUNTY, NORTH CAROLINA
 GROVE TOWNSHIP
 REF: B.M. 2024, PG. 588

178 GROVE TOWNSHIP WAY
 LOT 15, LANGDON PRESERVE

MUNGO HOMES

PRELIMINARY PLOT PLAN FOR

IMPERVIOUS SURFACE TABLE

HOUSE	1,673 S.F.
DECK	120 S.F.
DRIVEWAY	648 S.F.
SIDEWALKS	46 S.F.
MISC/UTILITIES	9 S.F.
TOTAL IMPERVIOUS AREA	2,496 S.F.
TOTAL LOT AREA	61,618 S.F.
PERCENTAGE OF IMPERVIOUS AREA	4.05 %