



VICINITY MAP
NOT TO SCALE

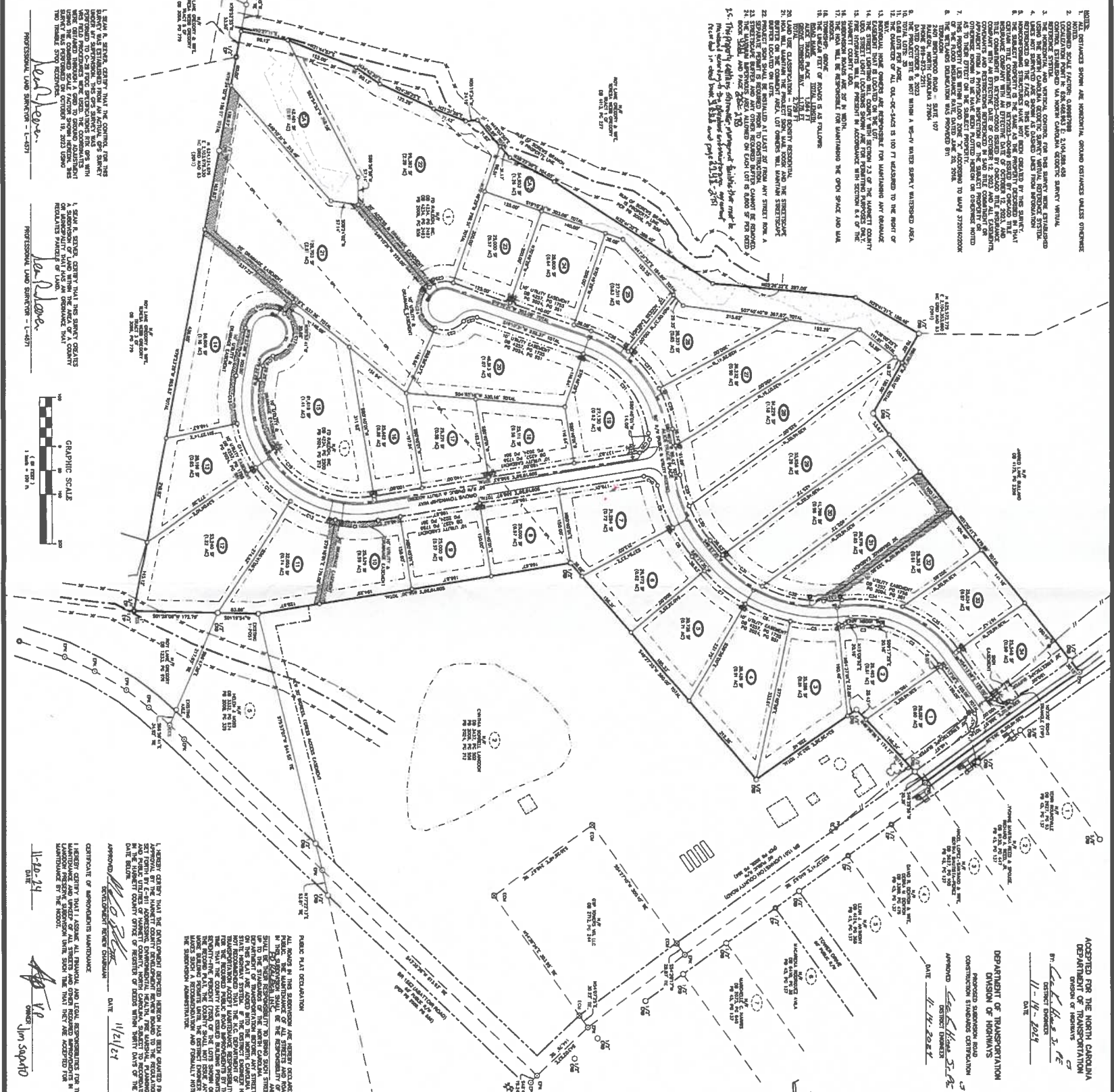
- NOTES:
1. CONTRACTOR SHALL MAINTAIN EXISTING UTILITIES UNLESS OTHERWISE NOTED.
 2. LOCALIZATION POINT IS SHOWN AT 1154.888 AS REFERENCED TO THE NORTH CAROLINA STATE PLAT.
 3. THE CONTRACTOR SHALL MAINTAIN EXISTING UTILITIES UNLESS OTHERWISE NOTED.
 4. THE CONTRACTOR SHALL MAINTAIN EXISTING UTILITIES UNLESS OTHERWISE NOTED.
 5. THE CONTRACTOR SHALL MAINTAIN EXISTING UTILITIES UNLESS OTHERWISE NOTED.
 6. THE CONTRACTOR SHALL MAINTAIN EXISTING UTILITIES UNLESS OTHERWISE NOTED.
 7. THE CONTRACTOR SHALL MAINTAIN EXISTING UTILITIES UNLESS OTHERWISE NOTED.
 8. THE CONTRACTOR SHALL MAINTAIN EXISTING UTILITIES UNLESS OTHERWISE NOTED.
 9. THE CONTRACTOR SHALL MAINTAIN EXISTING UTILITIES UNLESS OTHERWISE NOTED.
 10. THE CONTRACTOR SHALL MAINTAIN EXISTING UTILITIES UNLESS OTHERWISE NOTED.
 11. THE CONTRACTOR SHALL MAINTAIN EXISTING UTILITIES UNLESS OTHERWISE NOTED.
 12. THE CONTRACTOR SHALL MAINTAIN EXISTING UTILITIES UNLESS OTHERWISE NOTED.
 13. THE CONTRACTOR SHALL MAINTAIN EXISTING UTILITIES UNLESS OTHERWISE NOTED.
 14. THE CONTRACTOR SHALL MAINTAIN EXISTING UTILITIES UNLESS OTHERWISE NOTED.
 15. THE CONTRACTOR SHALL MAINTAIN EXISTING UTILITIES UNLESS OTHERWISE NOTED.
 16. THE CONTRACTOR SHALL MAINTAIN EXISTING UTILITIES UNLESS OTHERWISE NOTED.
 17. THE CONTRACTOR SHALL MAINTAIN EXISTING UTILITIES UNLESS OTHERWISE NOTED.
 18. THE CONTRACTOR SHALL MAINTAIN EXISTING UTILITIES UNLESS OTHERWISE NOTED.
 19. THE CONTRACTOR SHALL MAINTAIN EXISTING UTILITIES UNLESS OTHERWISE NOTED.
 20. THE CONTRACTOR SHALL MAINTAIN EXISTING UTILITIES UNLESS OTHERWISE NOTED.
 21. THE CONTRACTOR SHALL MAINTAIN EXISTING UTILITIES UNLESS OTHERWISE NOTED.
 22. THE CONTRACTOR SHALL MAINTAIN EXISTING UTILITIES UNLESS OTHERWISE NOTED.
 23. THE CONTRACTOR SHALL MAINTAIN EXISTING UTILITIES UNLESS OTHERWISE NOTED.
 24. THE CONTRACTOR SHALL MAINTAIN EXISTING UTILITIES UNLESS OTHERWISE NOTED.
 25. THE CONTRACTOR SHALL MAINTAIN EXISTING UTILITIES UNLESS OTHERWISE NOTED.
 26. THE CONTRACTOR SHALL MAINTAIN EXISTING UTILITIES UNLESS OTHERWISE NOTED.
 27. THE CONTRACTOR SHALL MAINTAIN EXISTING UTILITIES UNLESS OTHERWISE NOTED.
 28. THE CONTRACTOR SHALL MAINTAIN EXISTING UTILITIES UNLESS OTHERWISE NOTED.
 29. THE CONTRACTOR SHALL MAINTAIN EXISTING UTILITIES UNLESS OTHERWISE NOTED.
 30. THE CONTRACTOR SHALL MAINTAIN EXISTING UTILITIES UNLESS OTHERWISE NOTED.
 31. THE CONTRACTOR SHALL MAINTAIN EXISTING UTILITIES UNLESS OTHERWISE NOTED.
 32. THE CONTRACTOR SHALL MAINTAIN EXISTING UTILITIES UNLESS OTHERWISE NOTED.
 33. THE CONTRACTOR SHALL MAINTAIN EXISTING UTILITIES UNLESS OTHERWISE NOTED.
 34. THE CONTRACTOR SHALL MAINTAIN EXISTING UTILITIES UNLESS OTHERWISE NOTED.
 35. THE CONTRACTOR SHALL MAINTAIN EXISTING UTILITIES UNLESS OTHERWISE NOTED.

- LEGEND:
- 1. 1/2" = 1' CONCRETE CURB
 - 2. 1/2" = 1' CONCRETE CURB
 - 3. 1/2" = 1' CONCRETE CURB
 - 4. 1/2" = 1' CONCRETE CURB
 - 5. 1/2" = 1' CONCRETE CURB
 - 6. 1/2" = 1' CONCRETE CURB
 - 7. 1/2" = 1' CONCRETE CURB
 - 8. 1/2" = 1' CONCRETE CURB
 - 9. 1/2" = 1' CONCRETE CURB
 - 10. 1/2" = 1' CONCRETE CURB
 - 11. 1/2" = 1' CONCRETE CURB
 - 12. 1/2" = 1' CONCRETE CURB
 - 13. 1/2" = 1' CONCRETE CURB
 - 14. 1/2" = 1' CONCRETE CURB
 - 15. 1/2" = 1' CONCRETE CURB
 - 16. 1/2" = 1' CONCRETE CURB
 - 17. 1/2" = 1' CONCRETE CURB
 - 18. 1/2" = 1' CONCRETE CURB
 - 19. 1/2" = 1' CONCRETE CURB
 - 20. 1/2" = 1' CONCRETE CURB
 - 21. 1/2" = 1' CONCRETE CURB
 - 22. 1/2" = 1' CONCRETE CURB
 - 23. 1/2" = 1' CONCRETE CURB
 - 24. 1/2" = 1' CONCRETE CURB
 - 25. 1/2" = 1' CONCRETE CURB
 - 26. 1/2" = 1' CONCRETE CURB
 - 27. 1/2" = 1' CONCRETE CURB
 - 28. 1/2" = 1' CONCRETE CURB
 - 29. 1/2" = 1' CONCRETE CURB
 - 30. 1/2" = 1' CONCRETE CURB
 - 31. 1/2" = 1' CONCRETE CURB
 - 32. 1/2" = 1' CONCRETE CURB
 - 33. 1/2" = 1' CONCRETE CURB
 - 34. 1/2" = 1' CONCRETE CURB
 - 35. 1/2" = 1' CONCRETE CURB

1. STATE OF NORTH CAROLINA
 COUNTY OF HARRETT
 DEPARTMENT OF TRANSPORTATION
 DIVISION OF HIGHWAYS
 CONTRACT NO. 11-17-2021
 DATE: 11-17-2021

1. STATE OF NORTH CAROLINA
 COUNTY OF HARRETT
 DEPARTMENT OF TRANSPORTATION
 DIVISION OF HIGHWAYS
 CONTRACT NO. 11-17-2021
 DATE: 11-17-2021

1. STATE OF NORTH CAROLINA
 COUNTY OF HARRETT
 DEPARTMENT OF TRANSPORTATION
 DIVISION OF HIGHWAYS
 CONTRACT NO. 11-17-2021
 DATE: 11-17-2021



1. STATE OF NORTH CAROLINA
 COUNTY OF HARRETT
 DEPARTMENT OF TRANSPORTATION
 DIVISION OF HIGHWAYS
 CONTRACT NO. 11-17-2021
 DATE: 11-17-2021

1. STATE OF NORTH CAROLINA
 COUNTY OF HARRETT
 DEPARTMENT OF TRANSPORTATION
 DIVISION OF HIGHWAYS
 CONTRACT NO. 11-17-2021
 DATE: 11-17-2021

1. STATE OF NORTH CAROLINA
 COUNTY OF HARRETT
 DEPARTMENT OF TRANSPORTATION
 DIVISION OF HIGHWAYS
 CONTRACT NO. 11-17-2021
 DATE: 11-17-2021

ADSite solutions

PROJECT VALUE
LANGDON PRESERVE SUBDIVISION
 SUB2407-0023

OWNER
FD RALEIGH, INC.

341 Williams Drive - Suite 201
 Cary, North Carolina 27511
 Phone: (919) 505-5200

DATE SUBMITTED
 APRIL 30, 2024

DRAWING SCALE
 HORIZONTAL: 1" = 100'

VERTICAL: 1" = 10'

PROJECT INFORMATION

DATE	BY	REVISION
11-15-24	ADSite	ISSUED FOR PERMIT

GRAPHIC SCALE
 1" = 100' H.