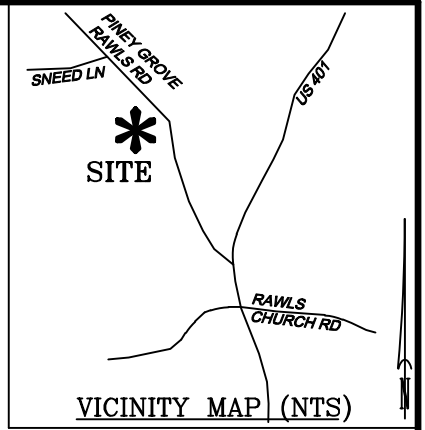
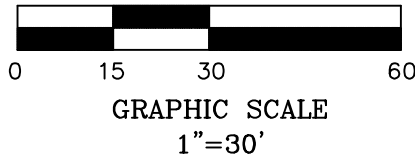
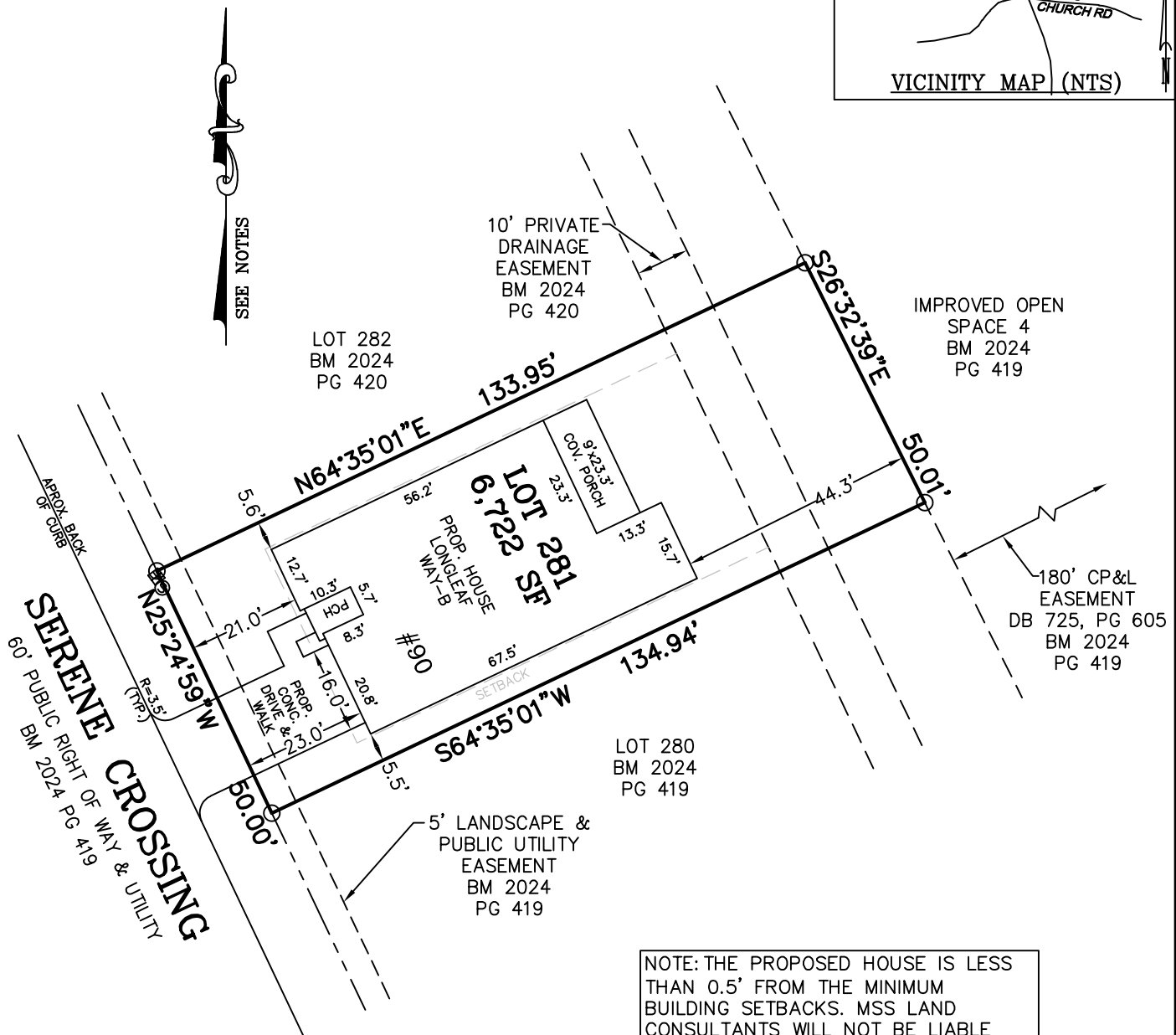


**LEGEND**

- MATHEMATICAL POINT
- CONTROL CORNER
- ⊞ WATER METER
- ⊙ SEWER CLEAN OUT
- ⊗ FIRE HYDRANT



SEE NOTES



NOTE: THE PROPOSED HOUSE IS LESS THAN 0.5' FROM THE MINIMUM BUILDING SETBACKS. MSS LAND CONSULTANTS WILL NOT BE LIABLE FOR ANY OVERHANGS OR ERRORS DUE TO THE CONSTRUCTION PROCESS.

**NOTES:**  
 -REFERENCE HARNETT CO. BM 2024, PG 417-424 FOR BOUNDARY INFORMATION, NORTH INDEX & TIE LINES TO SUBDIVISION CONTROL CORNERS.  
 -ZONED: RA-30, RA-40, & CONSERVATION.  
 -SETBACKS, PER BM 2024 PG 417:  
 >43' LOT WIDTH:  
 FRONT YARD-20', SIDE YARD-5', REAR YARD-20', CORNER YARD-12'.  
 <=43' LOT WIDTH:  
 FRONT YARD-20', SIDE YARD- 4' & 4' OR 0' & 8', REAR YARD-20', CORNER YARD 12'.  
 -PROPERTY IS NOT LOCATED WITHIN A SPECIAL FLOOD HAZARD AREA AS SCALED FROM THE NFIP FIRM No. 3720065500L (EFFECTIVE DATE: JULY 19, 2022) AND/OR 3720064500J (EFFECTIVE DATE: 10/3/2006), AND/OR 3720064400J (EFFECTIVE DATE: 10/3/2006).

MAXIMUM ALLOWABLE IMPERVIOUS-3,650 SF

TOTAL ESTIMATED IMPERVIOUS-2,987 SF	
SITE	SQ. FT.
HOUSE	2,355
DRIVEWAY	368
LEAD WALK	45
COV. PORCH	210
PATIO	0
A/C PAD	9

**PERMIT PLAN LOT: 281**

SERENITY SUBDIVISION, PHASE 6A  
 HECTORS CREEK TOWNSHIP, HARNETT COUNTY, NC

SURVEYED FOR  
**TRI POINTE HOMES HOLDINGS, INC.**  
 5440 WADE PARK BLVD #400  
 RALEIGH, NC 27607

I HEREBY CERTIFY THAT THE BUILDING WILL LIE WHOLLY ON THE LOT. THIS PLAT IS OF AN EXISTING PARCEL OF LAND. THIS IS NOT A SURVEY AND NOT FOR RECORDATION PURPOSES.

**MSS LAND CONSULTANTS, PC**  
 "Committed to Total Quality Service"  
 Firm License: C-2070  
 E S T. 1 9 9 8

6118 St. Giles St Phone (919) 510-4464  
 (Suite E) Fax (919) 510-9102  
 Raleigh, NC 27612 Email: gowersw@mssland.com

**PRELIMINARY PLAN**

MATTHEW A. HAYES, PLS L-4516

O:\\_TRI\_POINTE\_HOMES\TPH-24-03\_SERENITY\DWG\281.dwg\_Layout1, 12/26/2024 10:39:48 AM, crowsfordc, 1:1