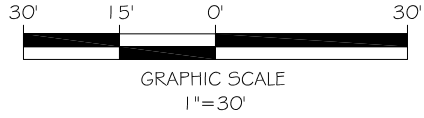
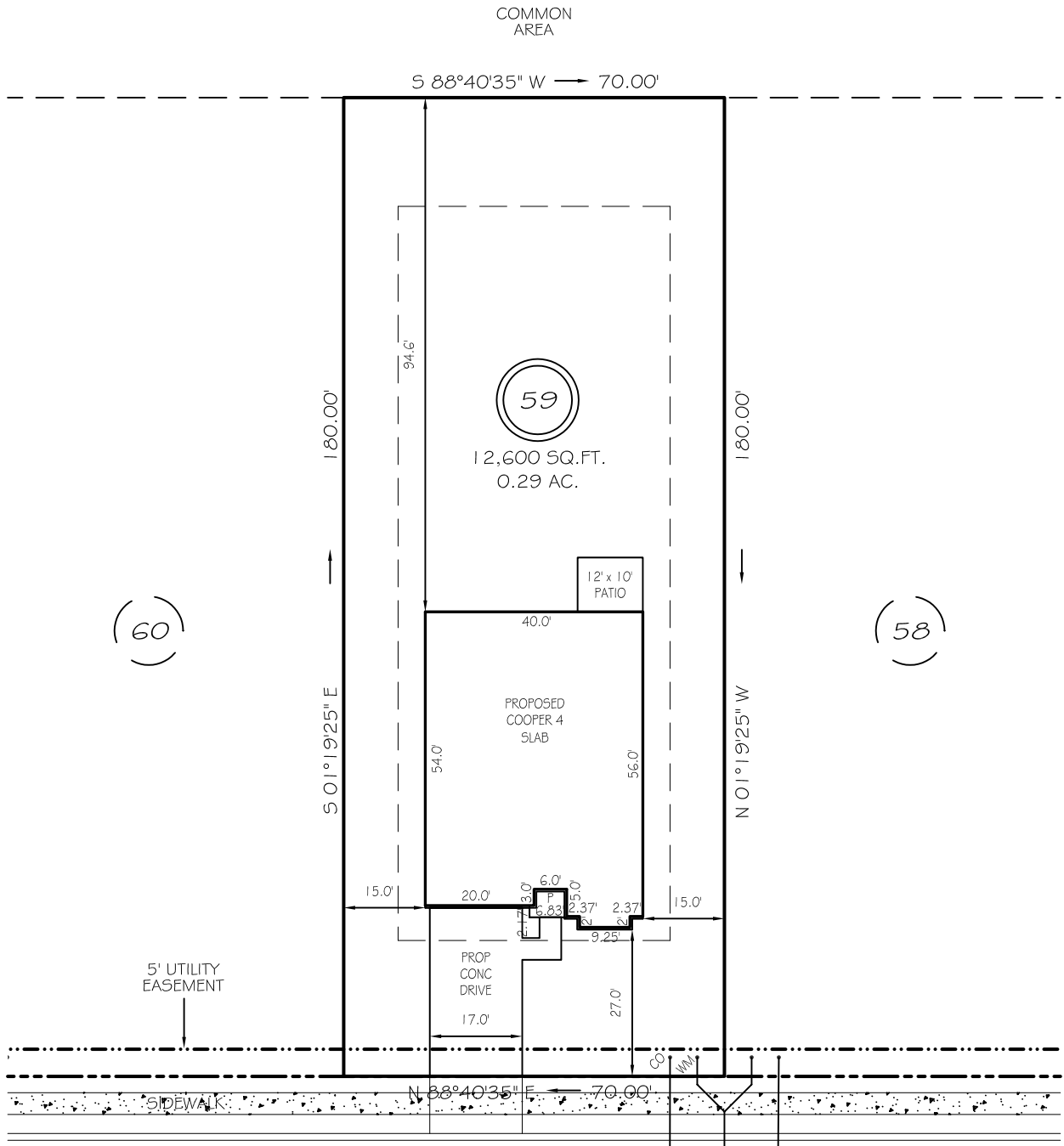


I, MICHAEL P. GRIFFIN, certify that under my direction and supervision this map was drawn from an actual field survey; that the error of closure of the survey as calculated by coordinates is 1:10,000+; that the area shown hereon was calculated by coordinates. Dashed lines shown hereon were not surveyed.

Witness my hand and seal this day of MONTH 2024.



BK 2023 PGS 658,660
HARNETT CO. REGISTRY



WINDING CREEK DRIVE

50' PUBLIC RW & UTILITY ACCESS

IMPERVIOUS AREAS

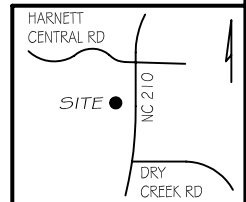
HOUSE	2237 SQ. FT.
DRIVE & WALKS	571 SQ. FT.
PATIO	120 SQ. FT.
TOTAL	2928 SQ. FT.
ALLOWED	3800 SQ. FT.

SETBACKS

FRONT	25'
REAR	20'
SIDE	10'
CORNER SIDE	20'

LEGEND

EIP	EXISTING IRON PIPE	FES	FLARED END SECTION
IPS	IRON PIPE SET	WM	WATER METER
RAW	RIGHT OF WAY	CO	CLEAN OUT
N/F	NOW OR FORMERLY	FH	FIRE HYDRANT
EIS	EXISTING IRON STAKE	CB	CATCH BASIN



P R E L I M I N A R Y
NOT FOR RECORDATION,
SALES OR CONVEYANCE



GRIFFIN LAND SURVEYING, INC.

P. O. BOX 148
FUQUAY-VARINA, NC 27526
(919) - 567-1963

FIRM LIC.# C-1345

PLOT PLAN

FOR

DRB HOMES

THE FARM AT
NEILLS CREEK

LOT 59

529 WINDING CREEK DRIVE

NORTH CAROLINA

HARNETT COUNTY NEILL'S CREEK TWSHP

DRAWN BY **KDF**

DATE **12/9/24**

CHECKED BY **MPG**

SCALE **1" = 30'**