

Truss Placement Plan
SCALE: NTS

| | | | | | | |
|---|-------|-----|----|----|------------|------------|
| ■ | HUS26 | USP | 19 | NA | 16d/3-1/2" | 16d/3-1/2" |
|---|-------|-----|----|----|------------|------------|

■ = 1st Level Wall
■ = 2nd Level Wall

All Truss Reactions are Less than 3,000 lbs. Unless Noted Otherwise.
○ -- Denotes Reaction Greater than 3,000 lbs. Reaction / # of Studs

| LVL | | | | | |
|--------|--------|-----------------------------|-------|---------|----------|
| PlotID | Length | Product | Plies | Net Qty | Fab Type |
| GDH-3 | 13-0-0 | 1-3/4"x 11-7/8" LVL Kerto-S | 2 | 2 | FF |

| END REACTION (UP TO) (DOWN TO) | NO. OF JACK STUDS REQUIRED @ EA END OF HEADQUARTER | END REACTION (UP TO) (DOWN TO) | NO. OF JACK STUDS REQUIRED @ EA END OF HEADQUARTER | END REACTION (UP TO) (DOWN TO) | NO. OF JACK STUDS REQUIRED @ EA END OF HEADQUARTER |
|--------------------------------|----------------------------------------------------|--------------------------------|----------------------------------------------------|--------------------------------|----------------------------------------------------|
| 1700 | 2 | 2550 | 2 | 3400 | 2 |
| 3400 | 2 | 5100 | 2 | 6800 | 2 |
| 5100 | 3 | 7650 | 3 | 10200 | 3 |
| 6800 | 4 | 10200 | 4 | 13600 | 4 |
| 8500 | 5 | 12750 | 5 | 17000 | 5 |
| 10200 | 6 | 15300 | 6 | | |
| 11900 | 7 | | | | |
| 13600 | 8 | | | | |
| 15300 | 9 | | | | |

| | | | |
|------------------|---------------------------------|------------------|-----------------|
| BUILDER | Weaver Homes, Inc. | COUNTY | Harnett |
| JOB NAME | Lot 46 West Preserve | ADDRESS | Thistle Court |
| PLAN | Gaston II (181035B) Tudor/3 Car | MODEL | Roof |
| SEAL DATE | N/A | DATE REV. | // |
| QUOTE # | | DRAWN BY | Marshall Naylor |
| JOB # | J0123-0238 | SALESMAN | Lenny Norris |

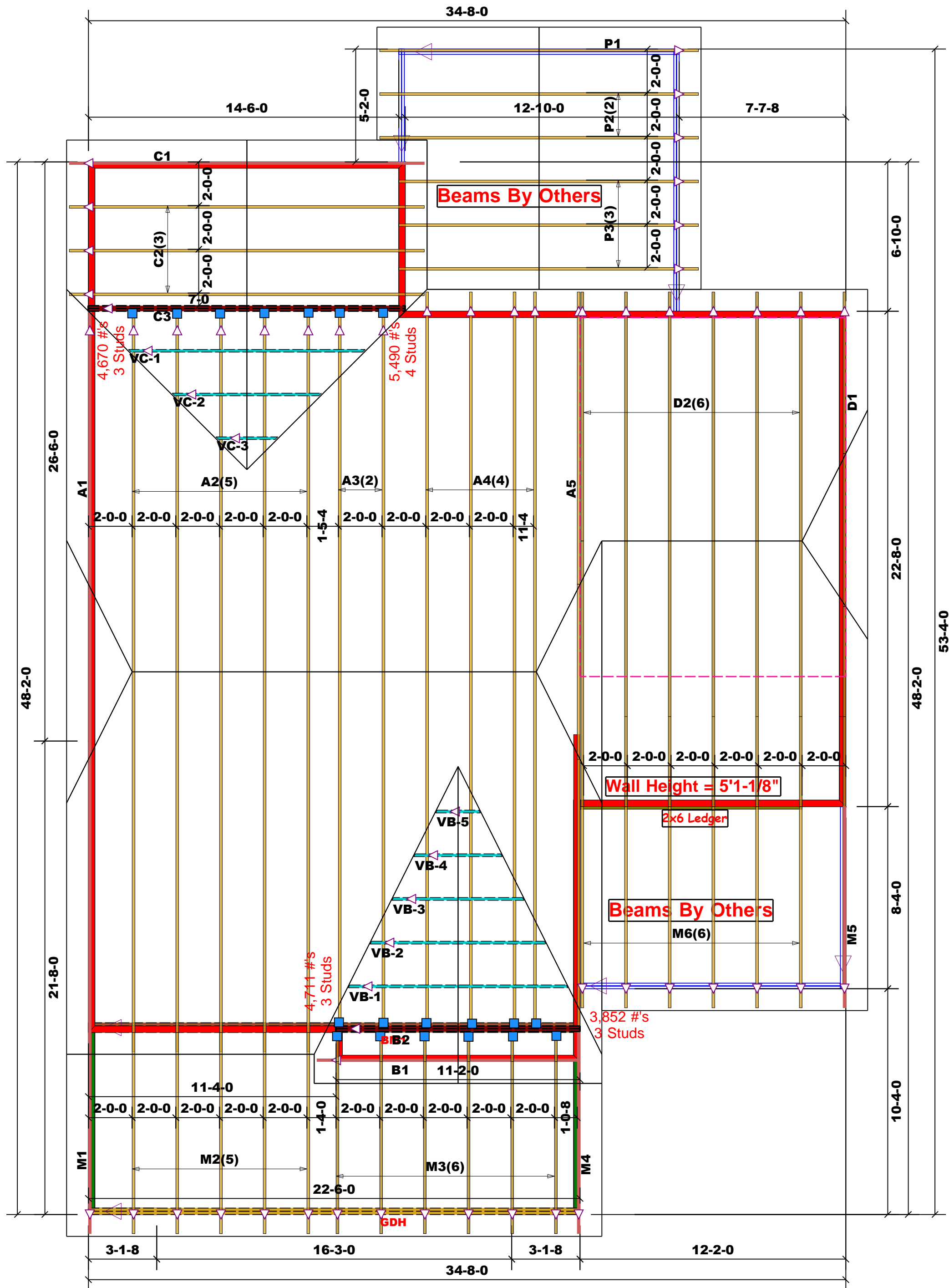
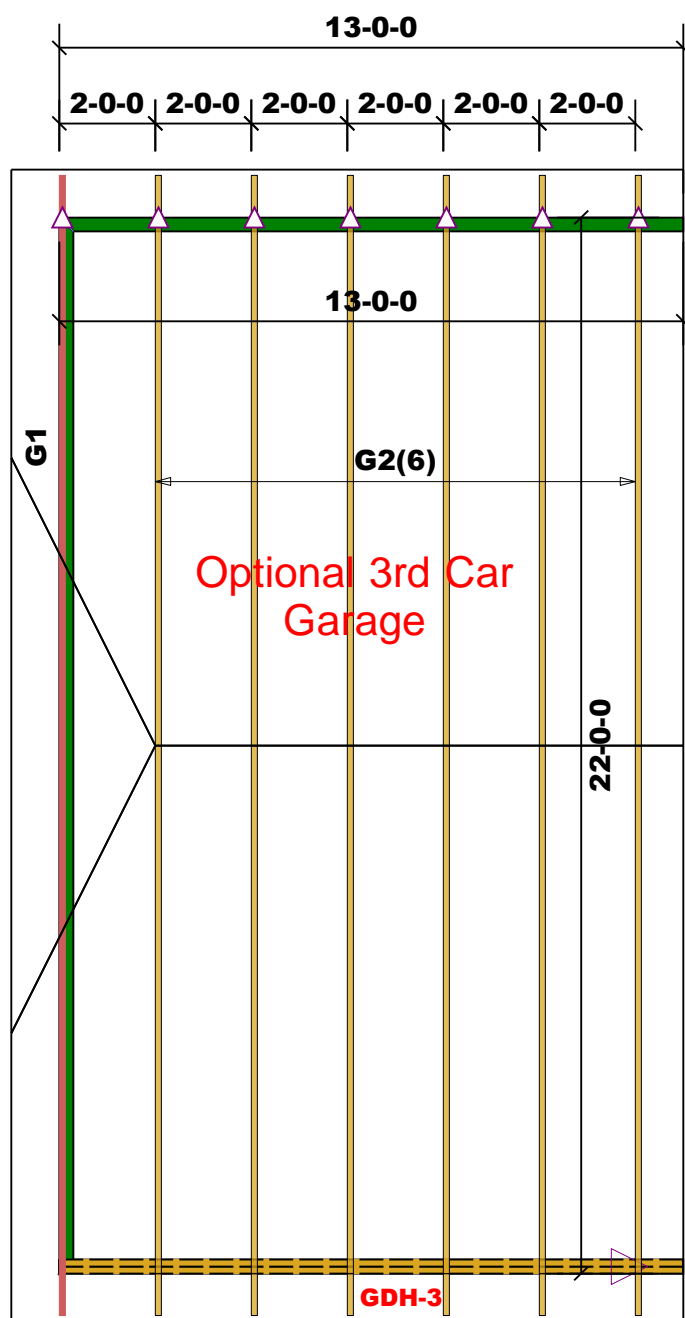
THIS IS A TRUSS PLACEMENT DIAGRAM ONLY.
These trusses are designed as individual building components to be incorporated into the building design at the specification of the building designer. See individual design sheets for each truss design identified on the placement drawing. The building designer is responsible for temporary and permanent bracing of the roof and floor system and for the overall structure. The design of the truss support structure including headers, beams, walls, and columns is the responsibility of the building designer. For general guidance regarding bracing, consult BCSH-B1 and BCSH-B3 provided with the truss delivery package or online @ sbcindustry.com

Bearing reactions less than or equal to 3000# are deemed to comply with the prescriptive Code requirements. The contractor shall refer to the attached Tables (derived from the prescriptive Code requirements) to determine the minimum foundation size and number of wood studs required to support reactions greater than 3000# but not greater than 15000#. A registered design professional shall be retained to design the support system for any reaction that exceeds those specified in the attached Tables. A registered design professional shall be retained to design the support system for all reactions that exceed 15000#.

Signature: Marshall Naylor

△ = Indicates Left End of Truss
(Reference Engineered Truss Drawing)
Do NOT Erect Truss Backwards

comTECH
ROOF & FLOOR TRUSSES & BEAMS
Reilly Road Industrial Park
Fayetteville, N.C. 28309
Phone: (910) 864-8787
Fax: (910) 864-4444



Truss Placement Plan
SCALE: NTS

| | | | | | | |
|---|-------|-----|----|----|------------|------------|
| ■ | HUS26 | USP | 19 | NA | 16d/3-1/2" | 16d/3-1/2" |
|---|-------|-----|----|----|------------|------------|

■ = 1st Level Wall

■ = 2nd Level Wall

All Truss Reactions are Less than 3,000 lbs. Unless Noted Otherwise.

○ -- Denotes Reaction Greater than 3,000 lbs. Reaction / # of Studs

| LVL | | | | | |
|--------|--------|-----------------------------|-------|---------|----------|
| PlotID | Length | Product | Plies | Net Qty | Fab Type |
| GDH-3 | 13-0-0 | 1-3/4"x 11-7/8" LVL Kerto-S | 2 | 2 | FF |

| END REACTION (UP TO) 2000# | END REACTION (UP TO) 2500# | END REACTION (UP TO) 3000# | END REACTION (UP TO) 3400# |
|----------------------------|----------------------------|----------------------------|----------------------------|
| 1700 | 2550 | 3400 | 3400 |
| 3400 | 5100 | 6800 | 6800 |
| 5100 | 7650 | 10200 | 10200 |
| 6800 | 10200 | 13600 | 13600 |
| 8500 | 12750 | 17000 | 17000 |
| 10200 | 15300 | | |
| 11900 | | | |
| 13600 | | | |
| 15300 | | | |

| | |
|------------------|---------------------------------|
| BUILDER | Weaver Homes, Inc. |
| JOB NAME | Lot 46 West Preserve |
| PLAN | Gaston II (181035B) Tudor/3 Car |
| SEAL DATE | N/A |
| QUOTE # | |
| JOB # | J0123-0238 |

| | |
|------------------|-----------------|
| COUNTY | Harnett |
| ADDRESS | Thistle Court |
| MODEL | Roof |
| DATE REV. | // |
| DRAWN BY | Marshall Naylor |
| SALESMAN | Lenny Norris |

THIS IS A TRUSS PLACEMENT DIAGRAM ONLY.
These trusses are designed as individual building components to be incorporated into the building design at the specification of the building designer. See individual design sheets for each truss design identified on the placement drawing. The building designer is responsible for temporary and permanent bracing of the roof and floor system and for the overall structure. The design of the truss support structure including headers, beams, walls, and columns is the responsibility of the building designer. For general guidance regarding bracing, consult BCSH-B1 and BCSH-B3 provided with the truss delivery package or online @ sbcindustry.com

Bearing reactions less than or equal to 3000# are deemed to comply with the prescriptive Code requirements. The contractor shall refer to the attached Tables (derived from the prescriptive Code requirements) to determine the minimum foundation size and number of wood studs required to support reactions greater than 3000# but not greater than 15000#. A registered design professional shall be retained to design the support system for any reaction that exceeds those specified in the attached Tables. A registered design professional shall be retained to design the support system for all reactions that exceed 15000#.

Signature: Marshall Naylor

△ = Indicates Left End of Truss
(Reference Engineered Truss Drawing)
Do NOT Erect Truss Backwards



ROOF & FLOOR TRUSSES & BEAMS

Reilly Road Industrial Park
Fayetteville, N.C. 28309
Phone: (910) 864-8787
Fax: (910) 864-4444