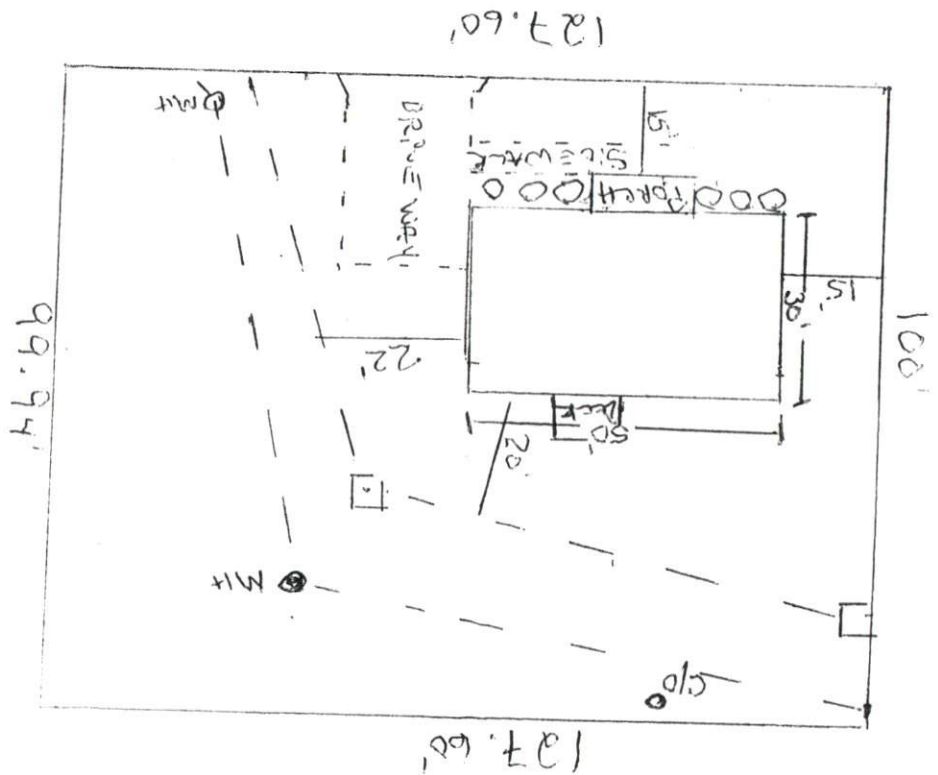
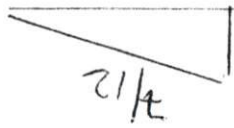
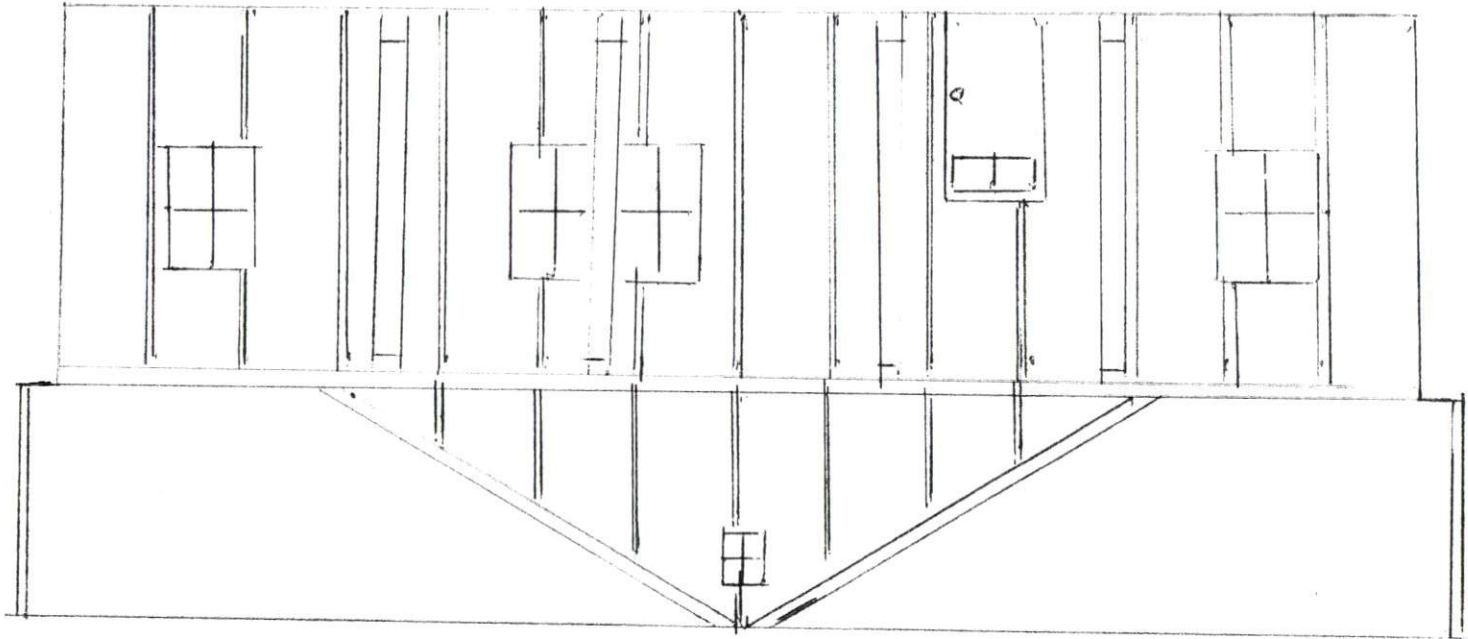


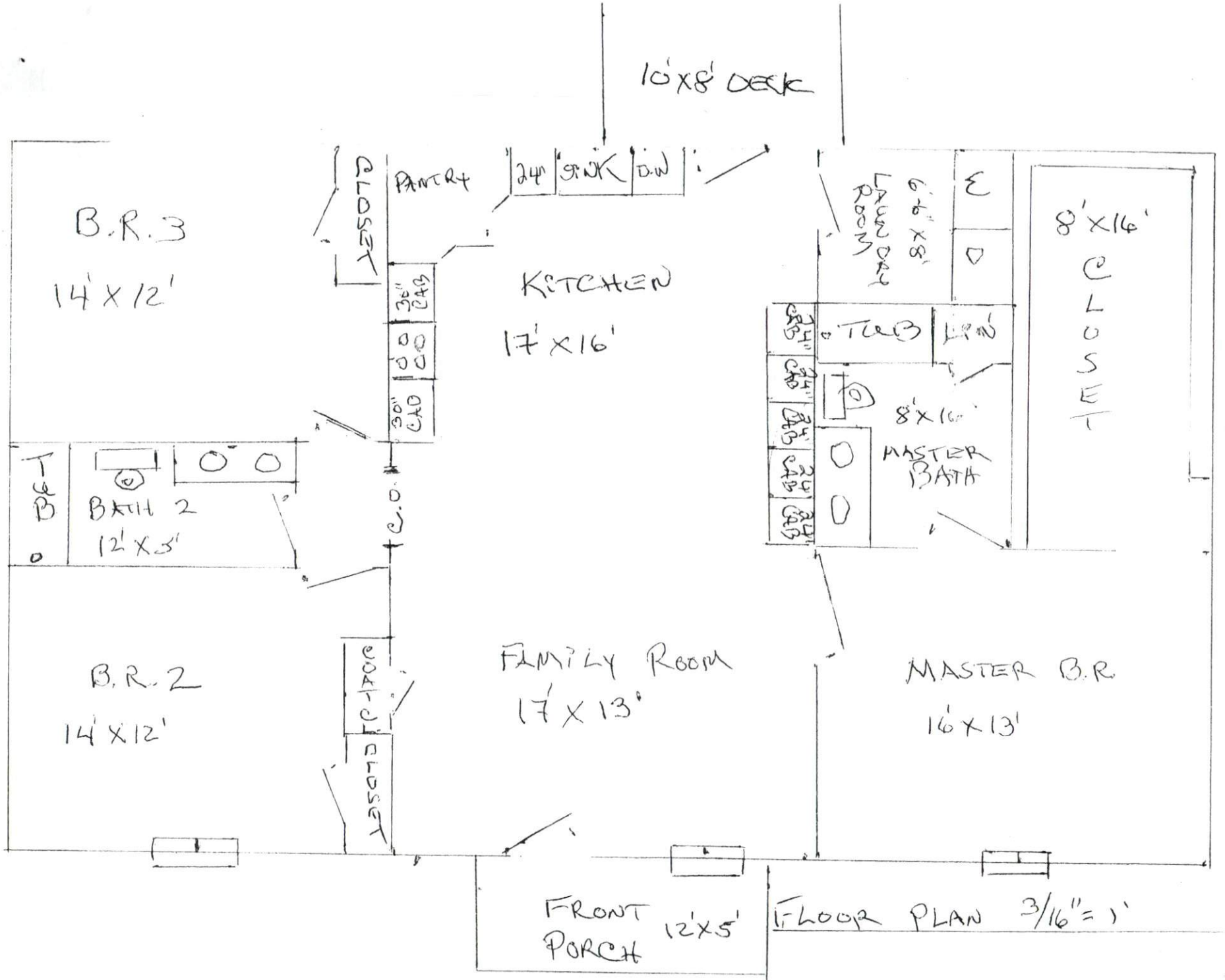
1" = 30'

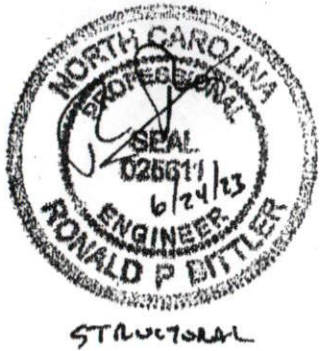
O = Bush



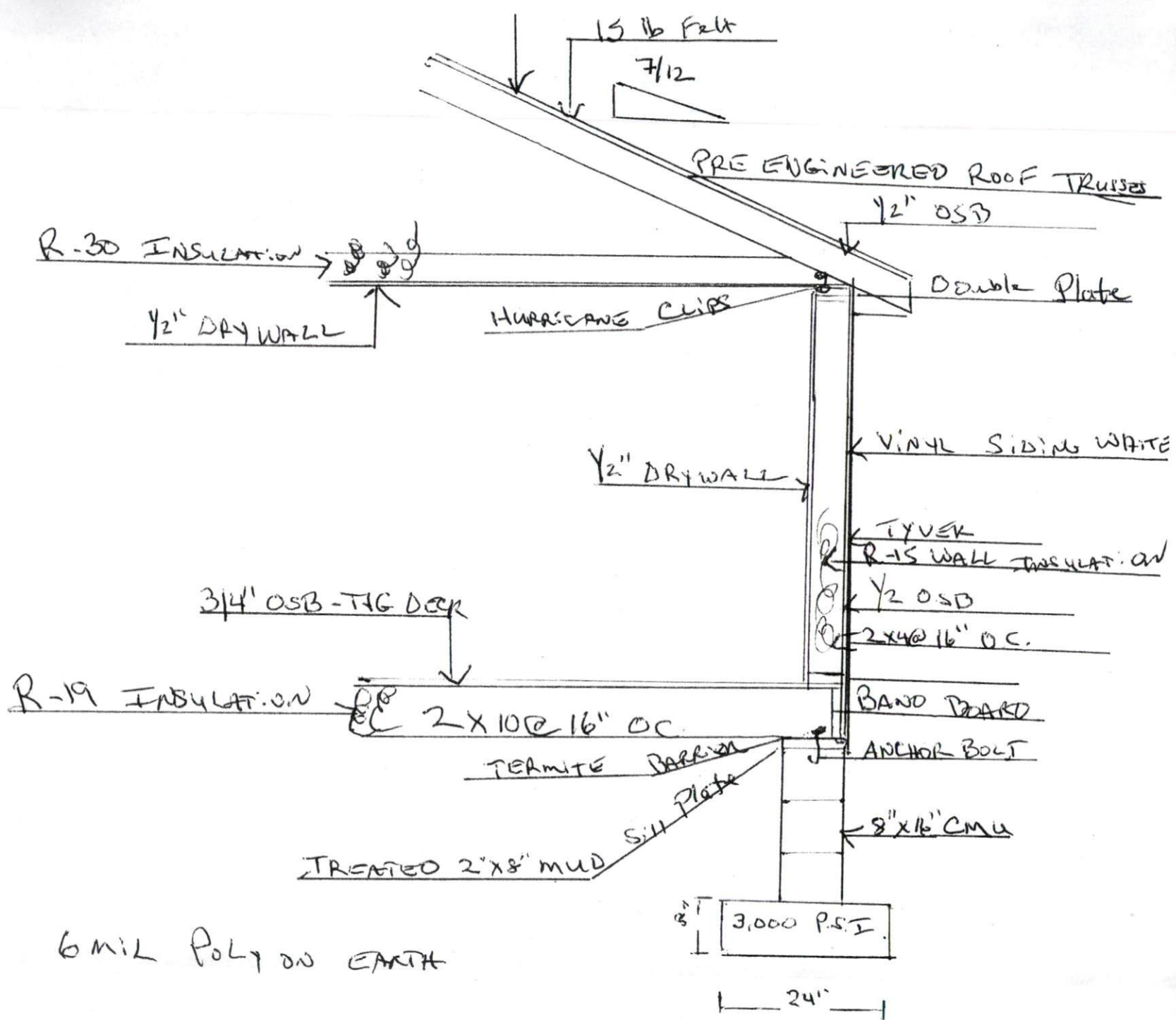
FRONT ELEVATION N.T.S.







RB Engineering, Inc. (C-2499)
 Ron Bittler, P.E.
 168 Quade Drive
 Cary, NC 27513
 919-677-9662



6 MIL POLY ON EARTH

WALL SECTION
 NTS

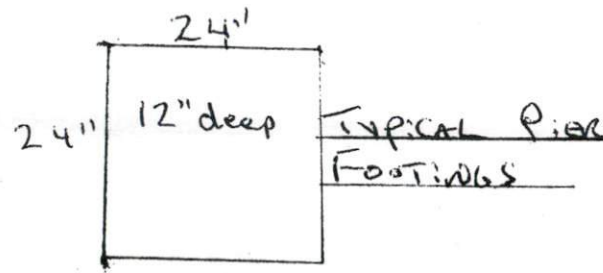
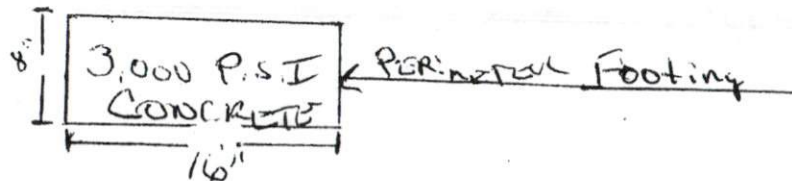
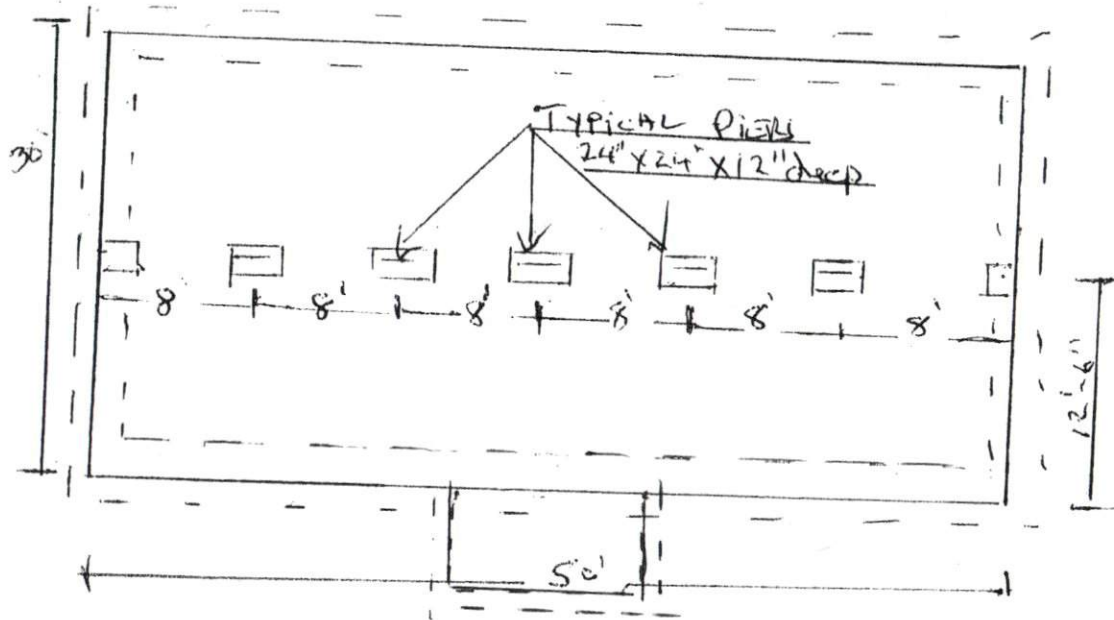


STRUCTURAL

RB Engineering, Inc. (C-2499)

Ron Bittler, P.E.
168 Quade Drive
Cary, NC 27513
919-677-9662

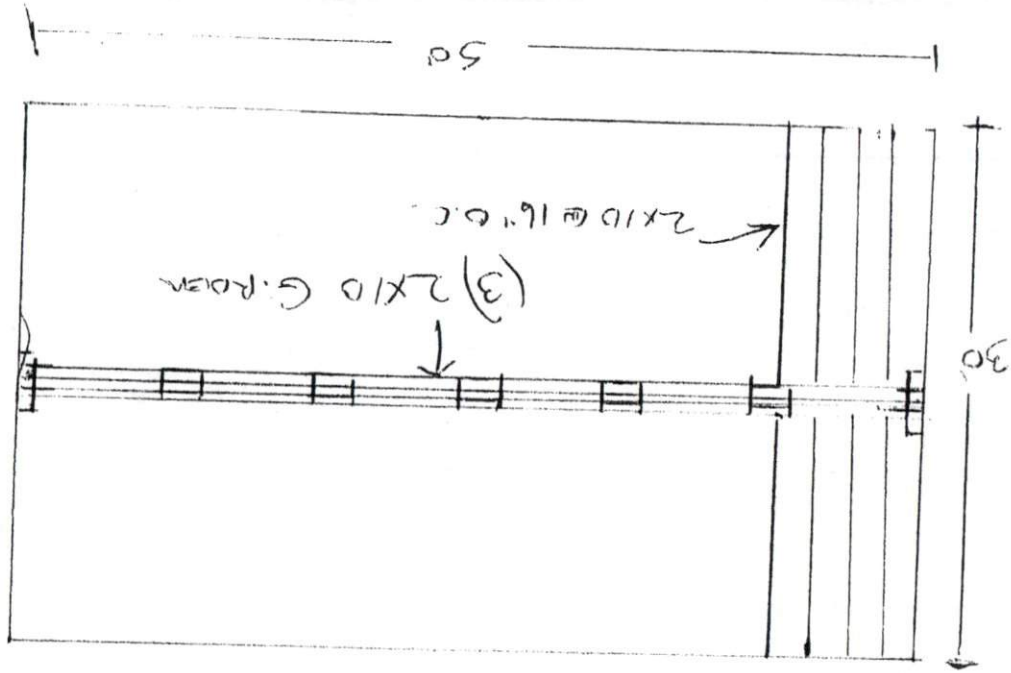
Project # RB-239054



N.T.S

Foundation Plan

N.T.S.



Project # 28-239054
919-677-9662
Cary, NC 27513
168 Quade Drive
Ron Bittler, P.E.
RB Engineering, Inc. (C-2499)

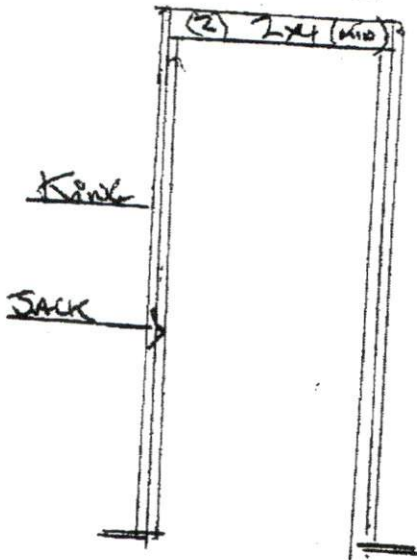


STRUCTURAL

RB Engineering, Inc. (C-2499)
Ron Bittler, P.E.
168 Quade Drive
Cary, NC 27513
919-677-9662



INTERIOR NOW LOAD
BEARING DOORS



EXTERIOR WINDOWS
AND DOORS

