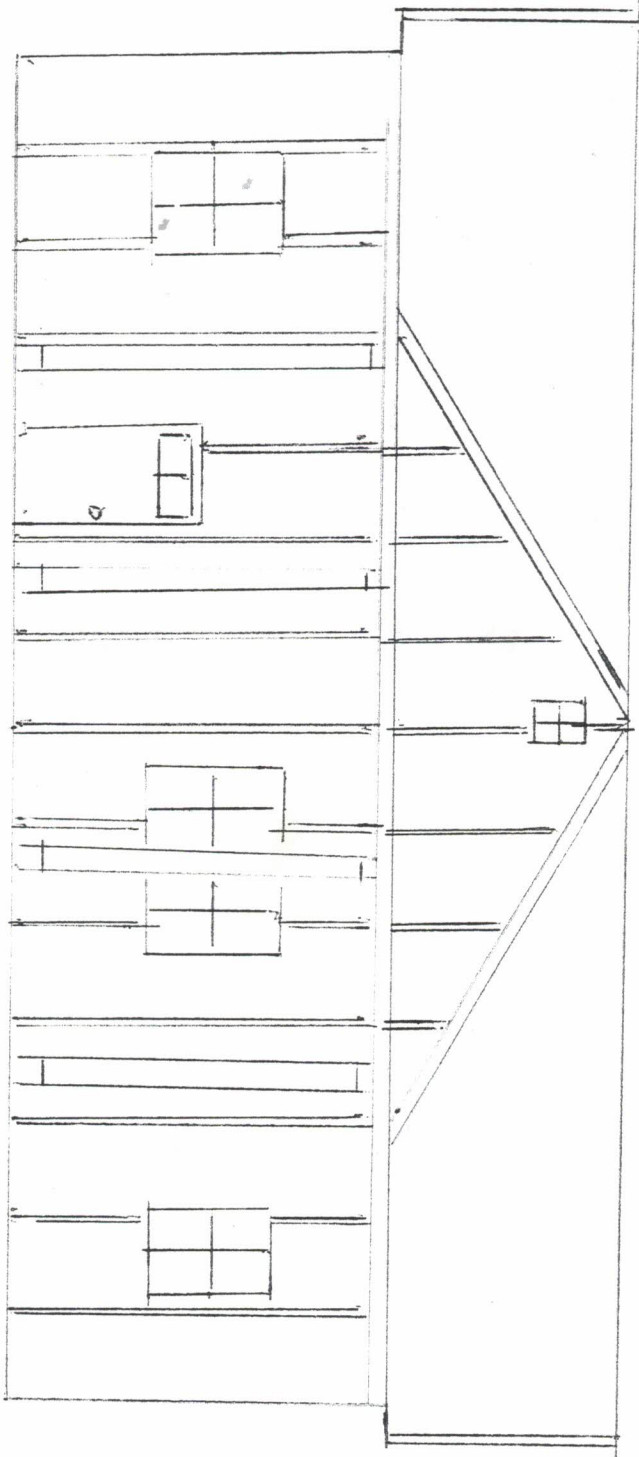
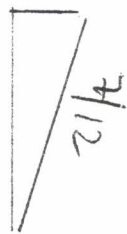


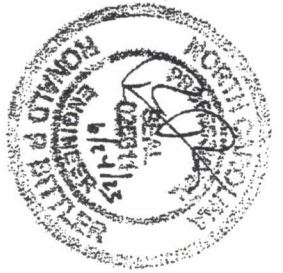
O = Bush

1" = 30'



FRONT ELEVATION NOTES.





STRUCTURAL

RB Engineering, Inc. (C-2499)

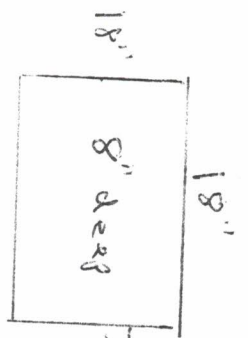
Ron Bittler, P.E.

168 Quads Drive

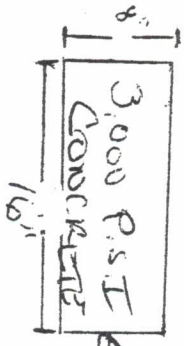
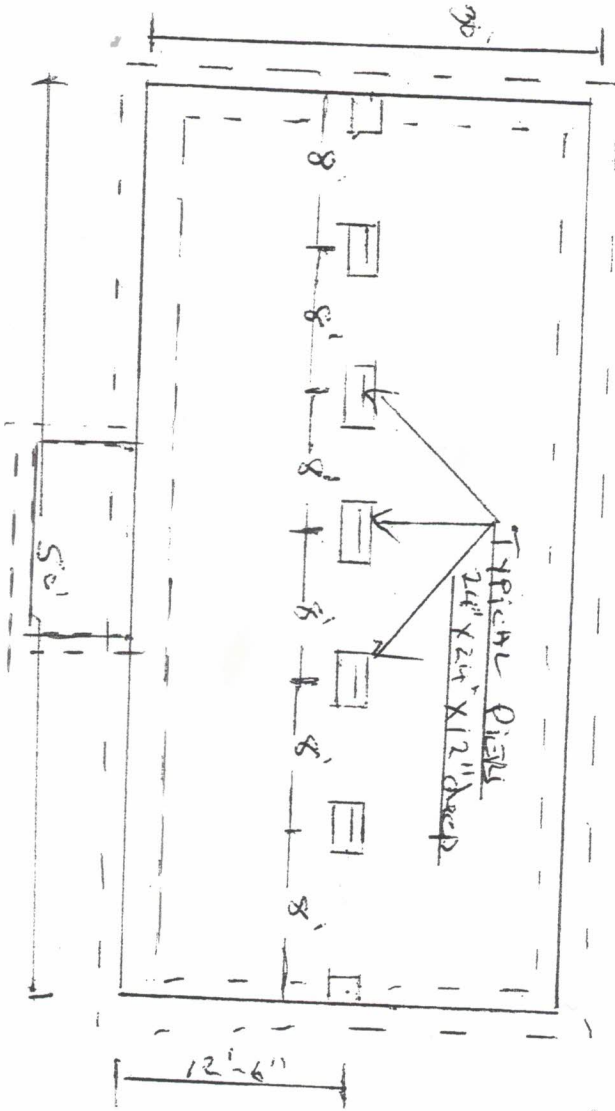
Cary, NC 27513

919-677-9662

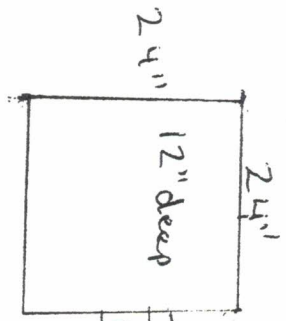
Project # 28-239054



TYPICAL DECK FOOTING



PERIMETER FOOTING



TYPICAL PIER FOOTINGS

FOUNDATION PLAN

D.T.S.

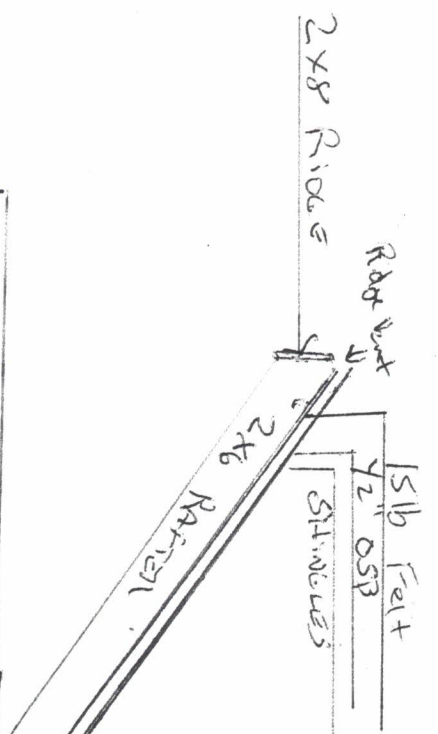
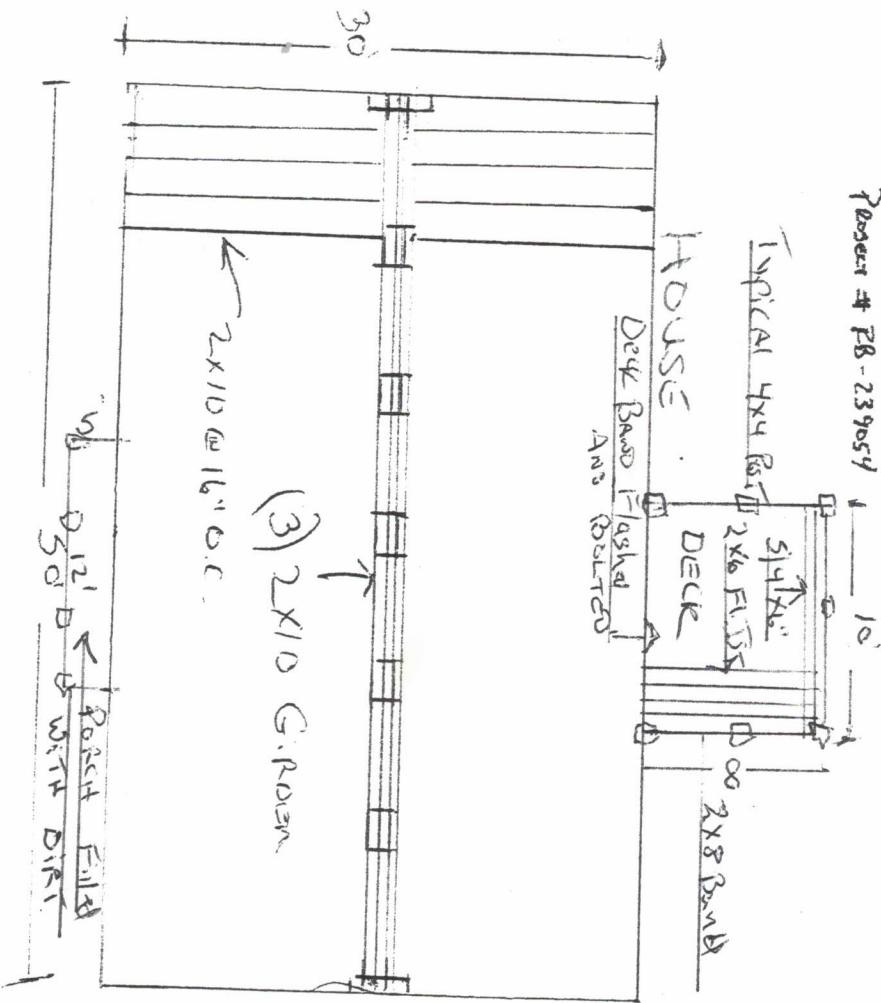


ST. ROCTUALL

RB Engineering, Inc. (C-2499)

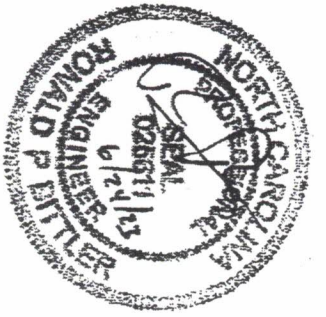
Ron Birtler, P.E.
168 Quade Drive
Cary, NC 27513
919-677-9662

Project # FB-239054



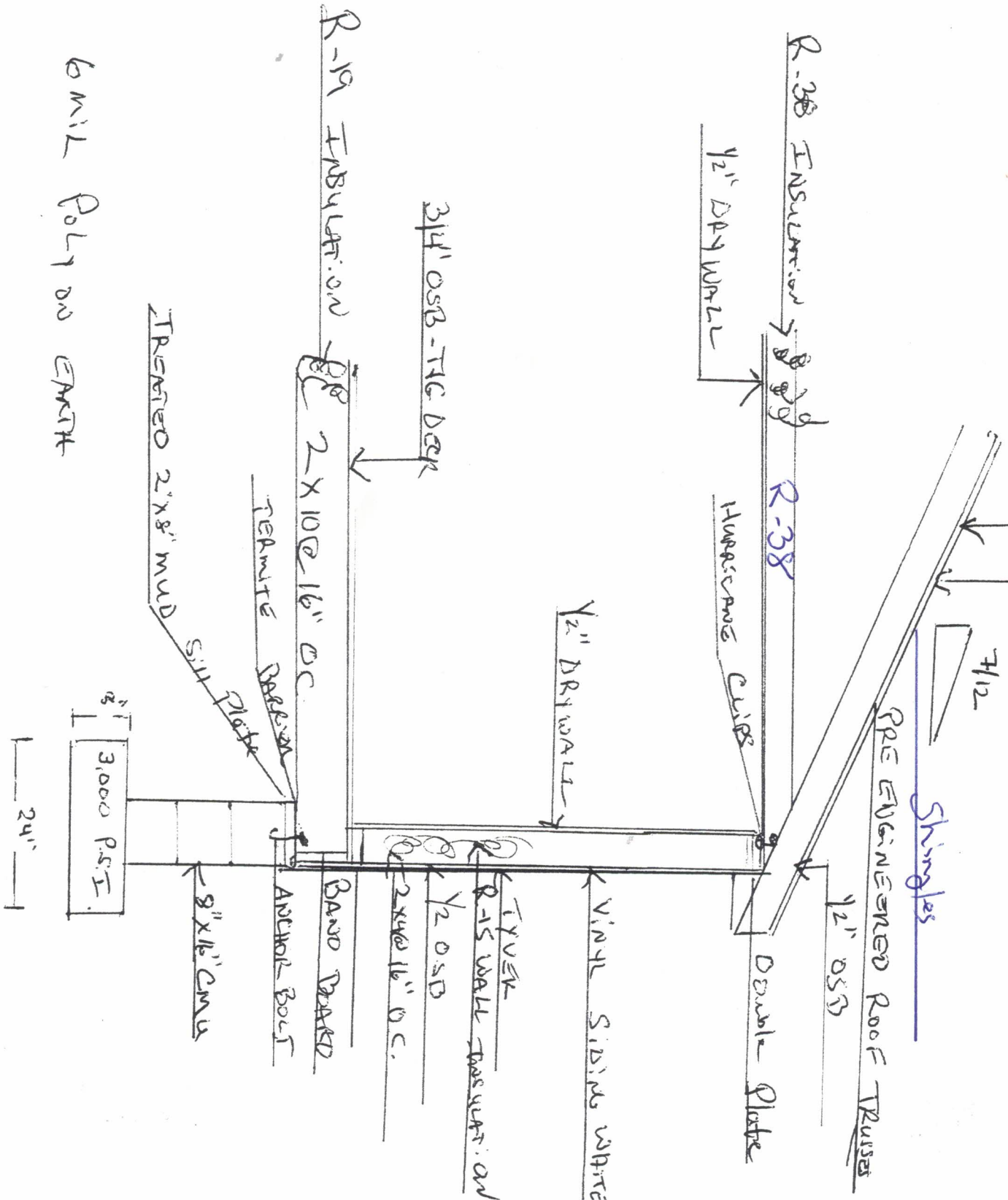
16' wide x 8' deep Footing
Front Porch Detail

N.T.S.



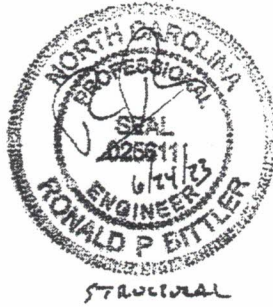
STRUCTURAL

RB Engineering, Inc. (C-2499)
 Ron Bittler, P.E.
 168 Quade Drive
 Cary, NC 27513
 919-677-9662

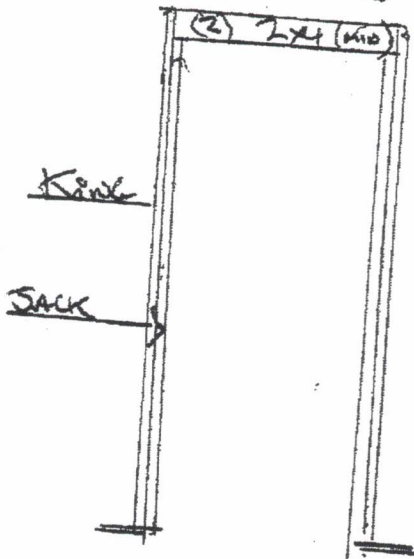


WALL SECTION
 N.T.S.

RB Engineering, Inc. (C-2499)
Ron Bitler, P.E.
168 Quade Drive
Cary, NC 27513
919-677-9662



INTERIOR NOW LOAD
BEARING DOORS



EXTERIOR WINDOWS
AND DOORS

