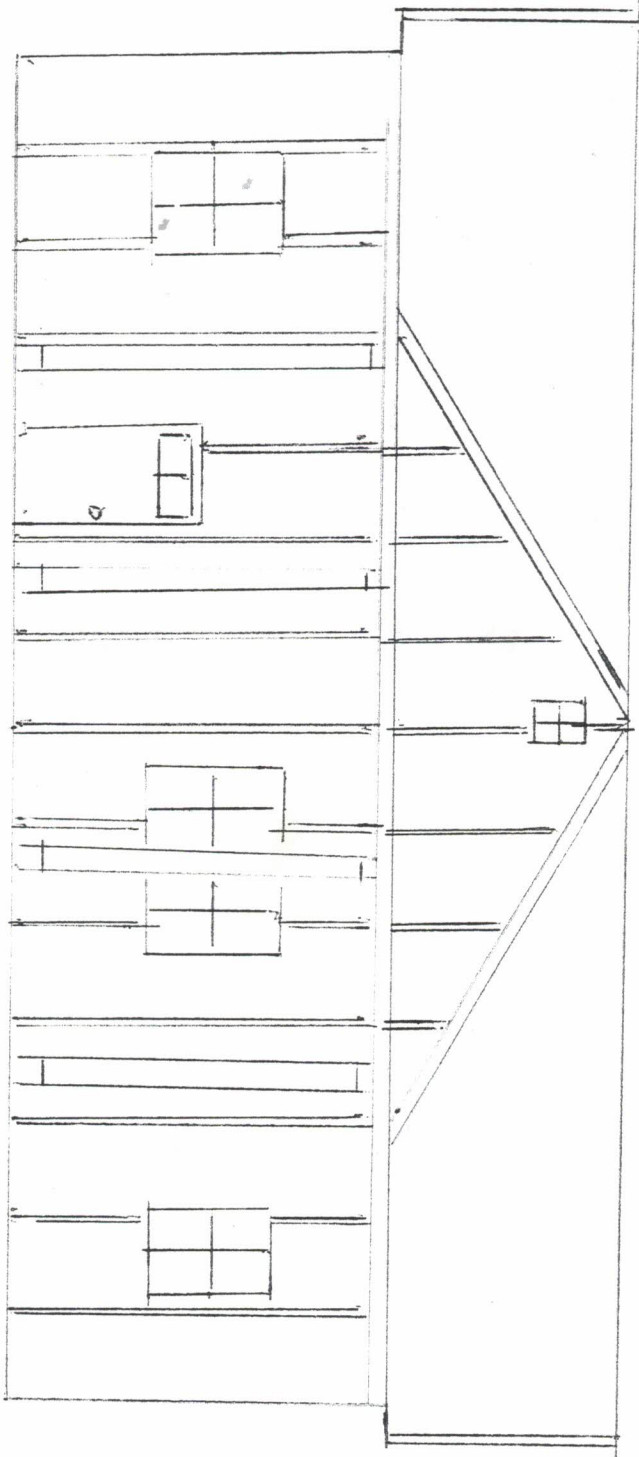
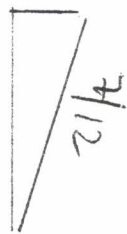


O = Bush

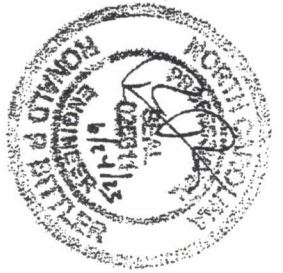
1" = 30'



FRONT ELEVATION NOTES.







STRUCTURAL

RB Engineering, Inc. (C-2499)

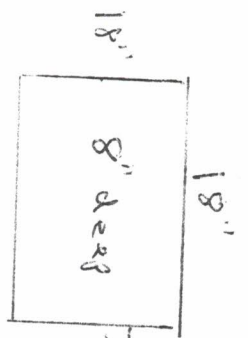
Ron Bittler, P.E.

168 Quads Drive

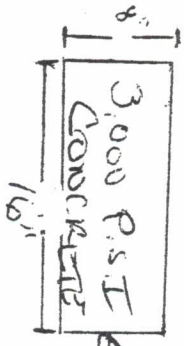
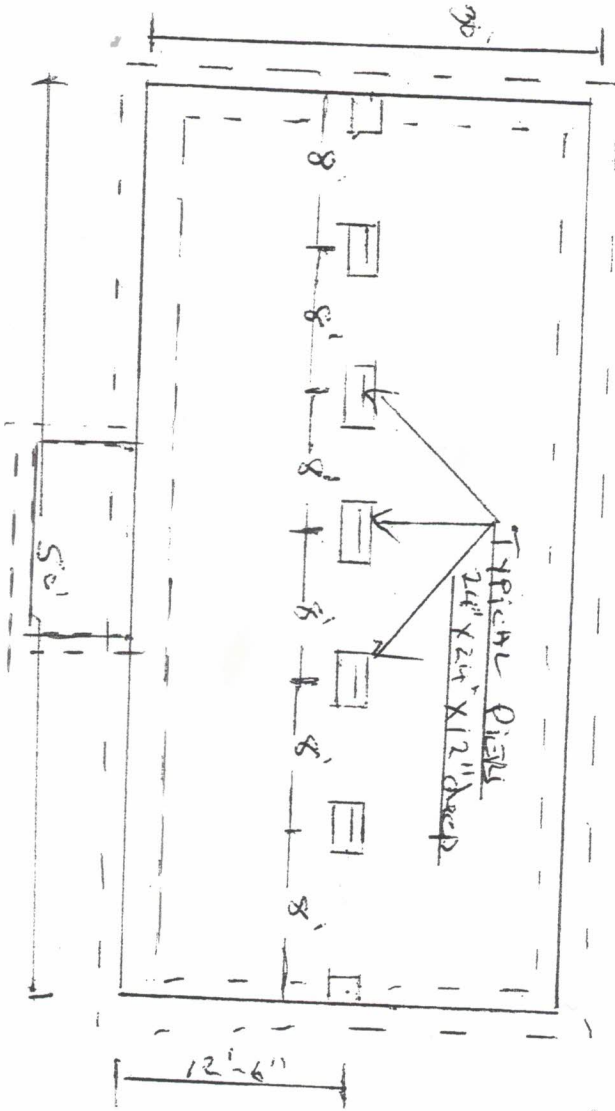
Cary, NC 27513

919-677-9662

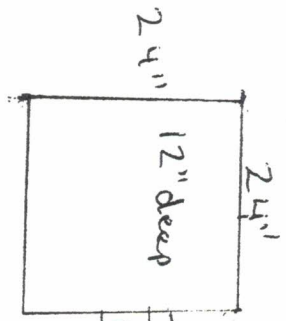
Project # 28-239054



TYPICAL DECK FOOTING



PERIMETER FOOTING



TYPICAL PIER FOOTINGS

FOUNDATION PLAN

D.T.S.

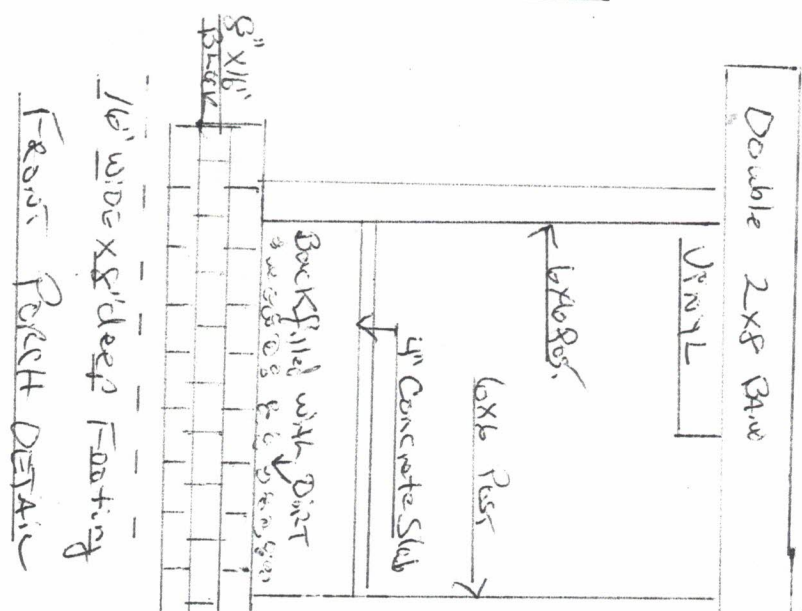
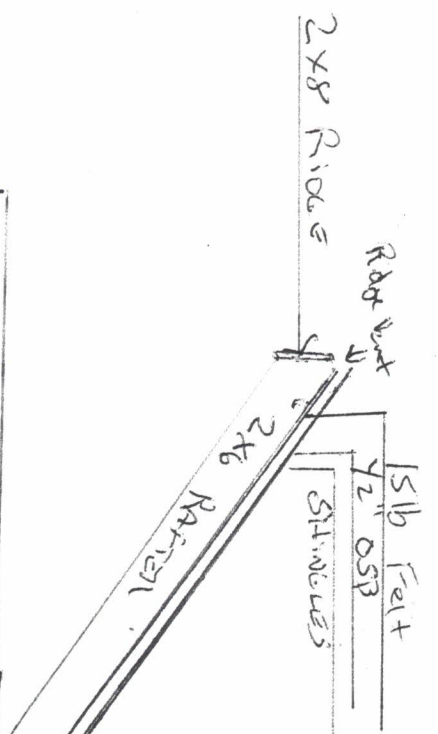
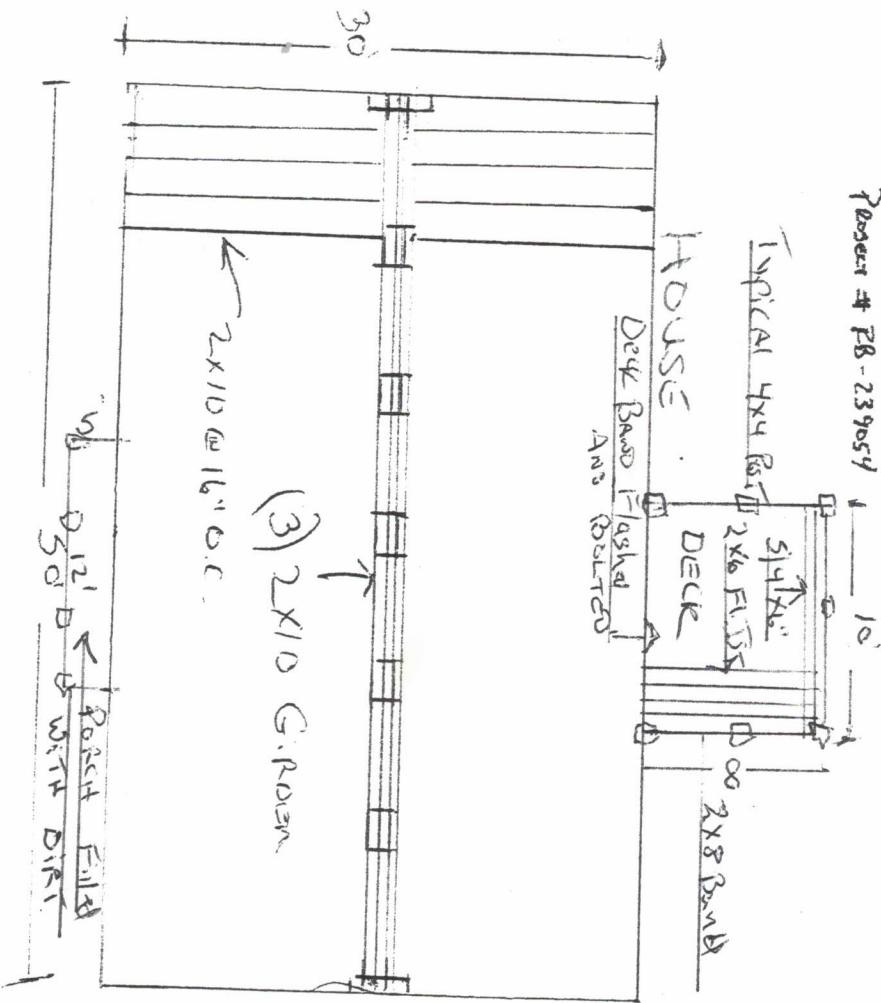


ST. ROCTUALL

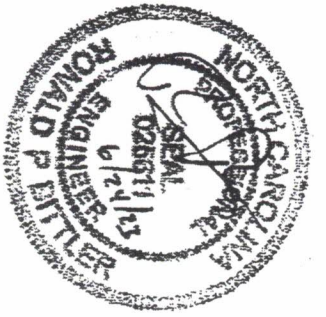
RB Engineering, Inc. (C-2499)

Ron Birtler, P.E.  
168 Quade Drive  
Cary, NC 27513  
919-677-9662

Project # FB-239054

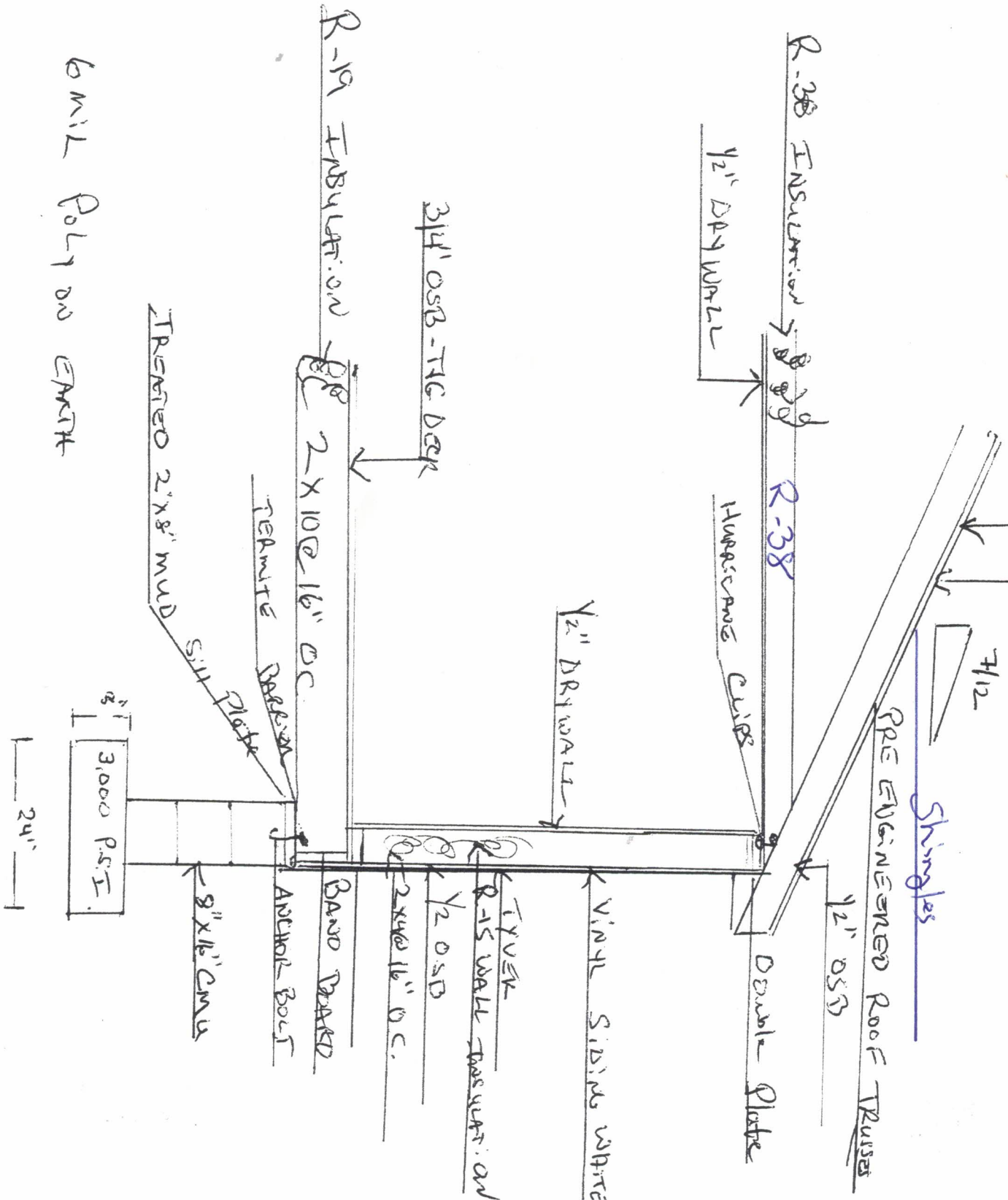


N.T.S.



STRUCTURAL

RB Engineering, Inc. (C-2499)  
 Ron Bittler, P.E.  
 168 Quade Drive  
 Cary, NC 27513  
 919-677-9662

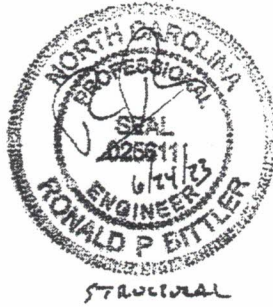


6 MIL POLY ON EARTH

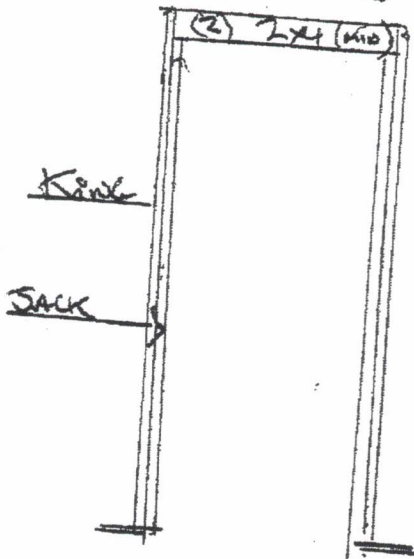
WALL SECTION  
 N.T.S.



RB Engineering, Inc. (C-2499)  
Ron Bitler, P.E.  
168 Quade Drive  
Cary, NC 27513  
919-677-9662



INTERIOR NOW LOAD  
BEARING DOORS



EXTERIOR WINDOWS  
AND DOORS

