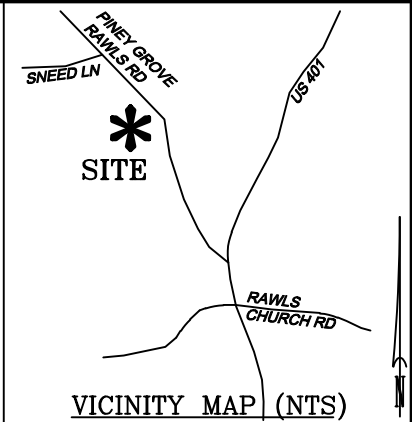
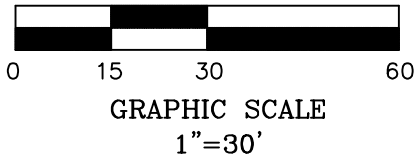
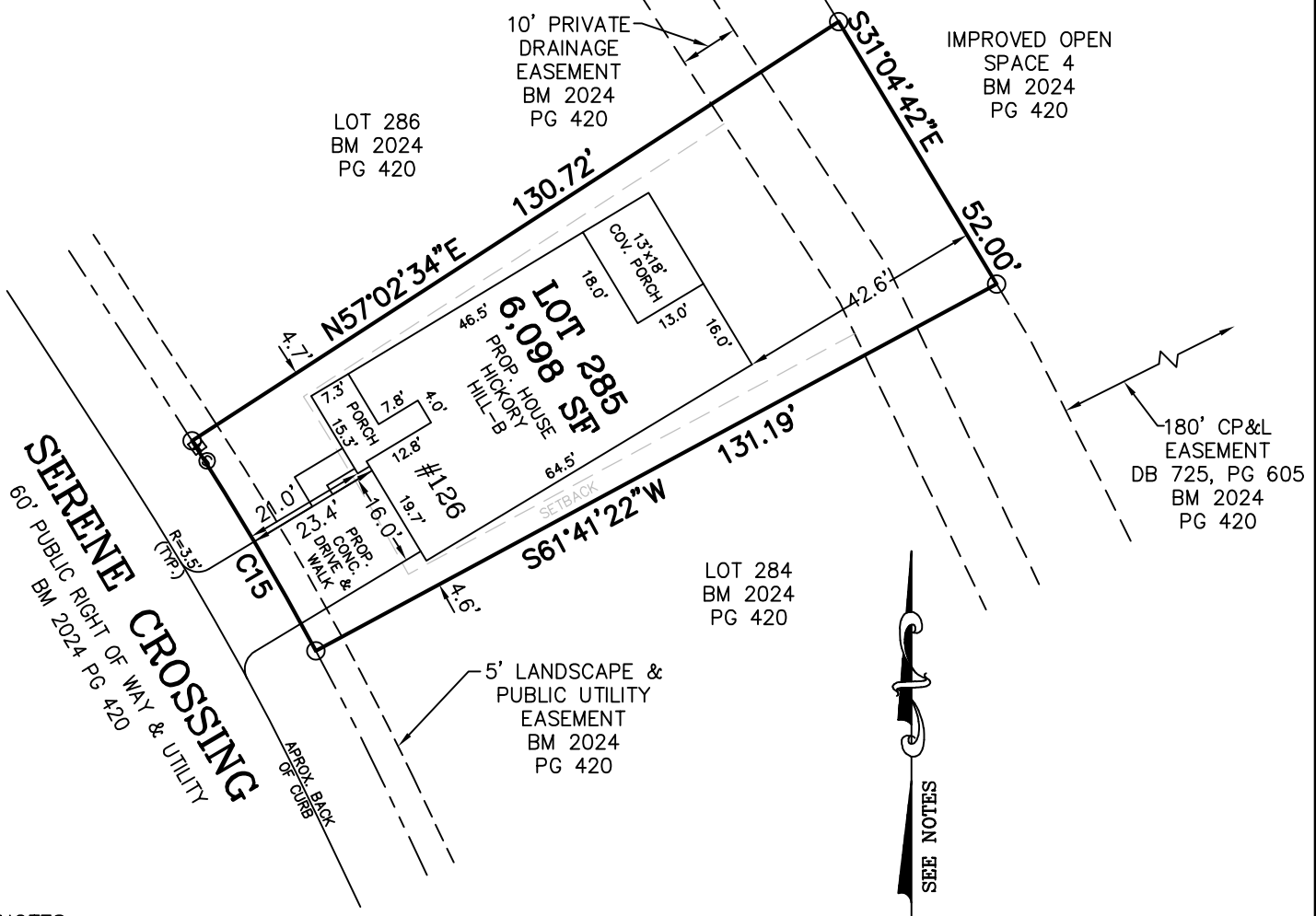


LEGEND

- MATHEMATICAL POINT
- CONTROL CORNER
- ⊞ WATER METER
- ⊙ SEWER CLEAN OUT
- ⊗ FIRE HYDRANT



CURVE TABLE				
CURVE	LENGTH	RADIUS	CHORD BEARING	CHORD
C15	41.39'	530.00'	N30°32'48"W	41.38'



NOTES:
 -REFERENCE HARNETT CO. BM 2024, PG 417-424 FOR BOUNDARY INFORMATION, NORTH INDEX & TIE LINES TO SUBDIVISION CONTROL CORNERS.
 -ZONED: RA-30, RA-40, & CONSERVATION.
 -SETBACKS, PER BM 2024 PG 417:
 >43' LOT WIDTH:
 FRONT YARD-20', SIDE YARD-5', REAR YARD-20', CORNER YARD-12'.
 <=43' LOT WIDTH:
 FRONT YARD-20', SIDE YARD- 4' & 4' OR 0' & 8', REAR YARD-20', CORNER YARD 12'.
 -PROPERTY IS NOT LOCATED WITHIN A SPECIAL FLOOD HAZARD AREA AS SCALED FROM THE NFIP FIRM No. 3720065500L (EFFECTIVE DATE: JULY 19, 2022) AND/OR 3720064500J (EFFECTIVE DATE: 10/3/2006), AND/OR 3720064400J (EFFECTIVE DATE: 10/3/2006).

TOTAL ESTIMATED IMPERVIOUS-2,659 SF	
SITE	SQ. FT.
HOUSE	1,995
DRIVEWAY	376
LEAD WALK	45
COV. PORCH	234
PAD	0
A/C PAD	9

PERMIT PLAN LOT: 285

SERENITY SUBDIVISION, PHASE 6A
 HECTORS CREEK TOWNSHIP, HARNETT COUNTY, NC

SURVEYED FOR
TRI POINTE HOMES HOLDINGS, INC.
 5440 WADE PARK BLVD #400
 RALEIGH, NC 27607

I HEREBY CERTIFY THAT THE BUILDING WILL LIE WHOLLY ON THE LOT. THIS PLAT IS OF AN EXISTING PARCEL OF LAND. THIS IS NOT A SURVEY AND NOT FOR RECORDATION PURPOSES.

MSS LAND CONSULTANTS, PC
 "Committed to Total Quality Service"
 Firm License: C-2070
 E S T. 1 9 9 8

6118 St. Giles St (Suite E) Raleigh, NC 27612
 Phone (919) 510-4464 Fax (919) 510-9102 Email: gowersw@mssland.com

PRELIMINARY PLAN

MATTHEW A. HAYES, PLS L-4516

O:_TRI_POINTE_HOMES\TPH-24-03_SERENITY\DWG\285.dwg_Layout1, 11/25/2024 1:28:21 PM, crawford, 1:1