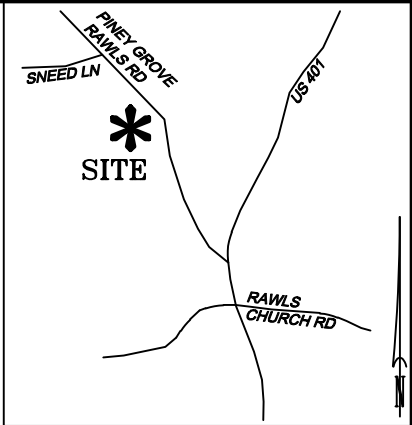
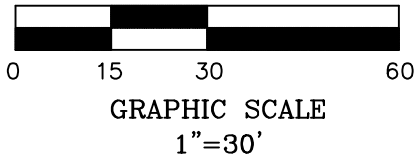


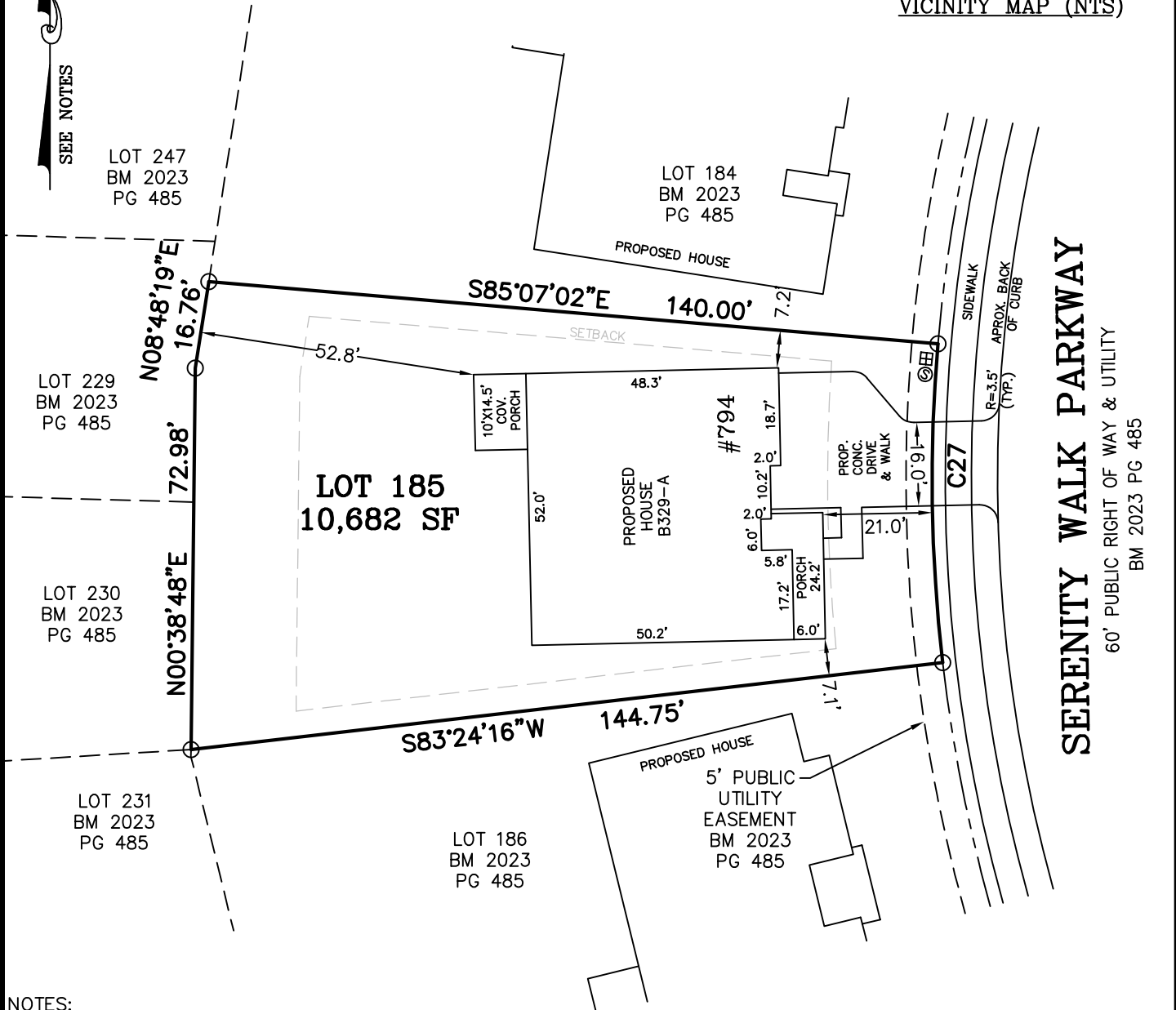
LEGEND

- MATHEMATICAL POINT
- CONTROL CORNER
- ⊞ WATER METER
- ⊙ SEWER CLEAN OUT
- ⊗ FIRE HYDRANT



VICINITY MAP (NTS)

CURVE TABLE				
CURVE	LENGTH	RADIUS	CHORD BEARING	CHORD
C27	61.10'	305.00'	S00°51'21"E	61.00'



NOTES:

- REFERENCE HARNETT CO. BM 2023, PG 483-493 FOR BOUNDARY INFORMATION, NORTH INDEX & TIE LINES TO SUBDIVISION CONTROL CORNERS.
- ZONED: RA-30, RA-40, & CONSERVATION.
- SETBACKS, PER BM 2023 PG 483:
 >43' LOT WIDTH:
 FRONT YARD-20', SIDE YARD-5', REAR YARD-20', CORNER YARD-12'.
- PROPERTY IS NOT LOCATED WITHIN A SPECIAL FLOOD HAZARD AREA AS SCALED FROM THE NFIP FIRM No. 3720065500L (EFFECTIVE DATE: JULY 19, 2022) AND/OR 3720064500J (EFFECTIVE DATE: 10/3/2006), AND/OR 3720064400J (EFFECTIVE DATE: 10/3/2006).

MAXIMUM ALLOWABLE IMPERVIOUS-3,700 SF

TOTAL ESTIMATED IMPERVIOUS-3,571 SF	
SITE	SQ. FT.
HOUSE	2,684
DRIVEWAY	680
LEAD WALK	53
COV. PORCH	145
PAD	0
A/C PAD	9

PERMIT PLAN LOT: 185

SERENITY SUBDIVISION, PHASE 2C
 HECTORS CREEK TOWNSHIP, HARNETT COUNTY, NC

SURVEYED FOR
DAVID WEEKLEY HOMES
 1901 N. HARRISON AVENUE, SUITE 200
 CARY, NC 27513



MSS LAND CONSULTANTS, PC
 "Committed to Total Quality Service"
 Firm License: C-2070
 E S T. 1 9 9 8

6118 St. Giles St Phone (919) 510-4464
 (Suite E) Fax (919) 510-9102
 Raleigh, NC 27612 Email: gowersw@mssland.com

I HEREBY CERTIFY THAT THE BUILDING WILL LIE WHOLLY ON THE LOT. THIS PLAT IS OF AN EXISTING PARCEL OF LAND. THIS IS NOT A SURVEY AND NOT FOR RECORDATION PURPOSES.

PRELIMINARY PLAN

MATTHEW A. HAYES, PLS L-4516

O:_DWHOMES\DWH-22-02-SERENITY.dwg, 185.dwg, Layout1, 11/12/2024 9:44:57 AM, crawfordc, 1:1