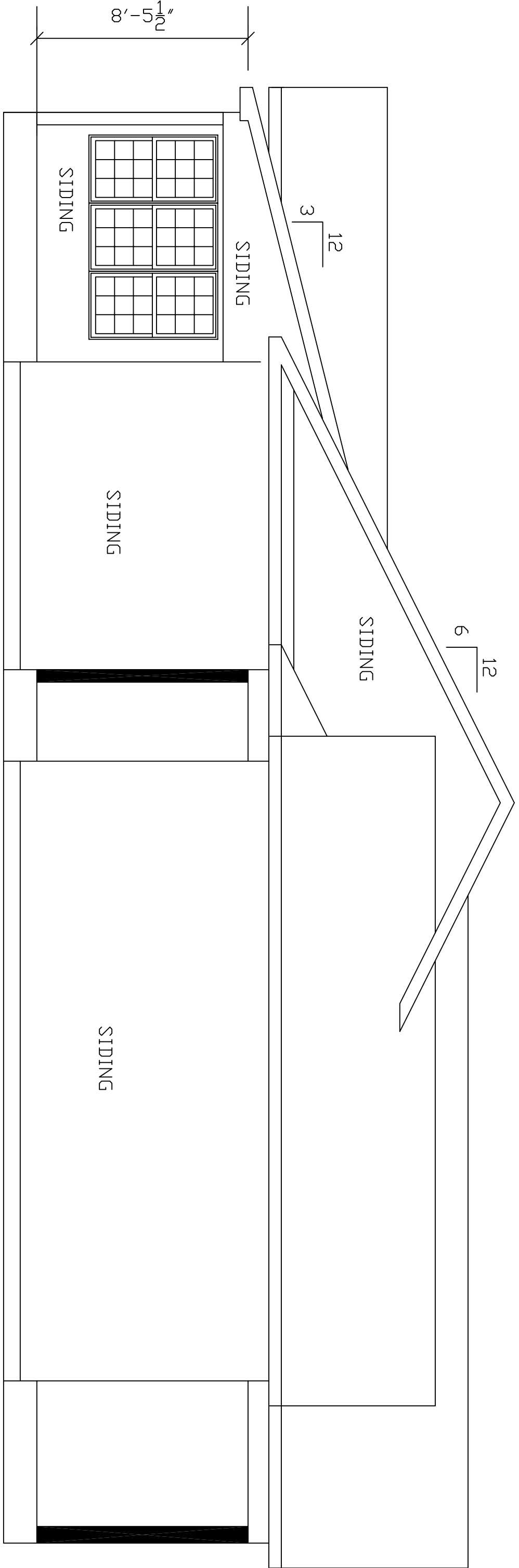


RIGHT SIDE ELEVATION
SCALE: 1/4"=1'



LEFT SIDE ELEVATION
SCALE: 1/4"=1'

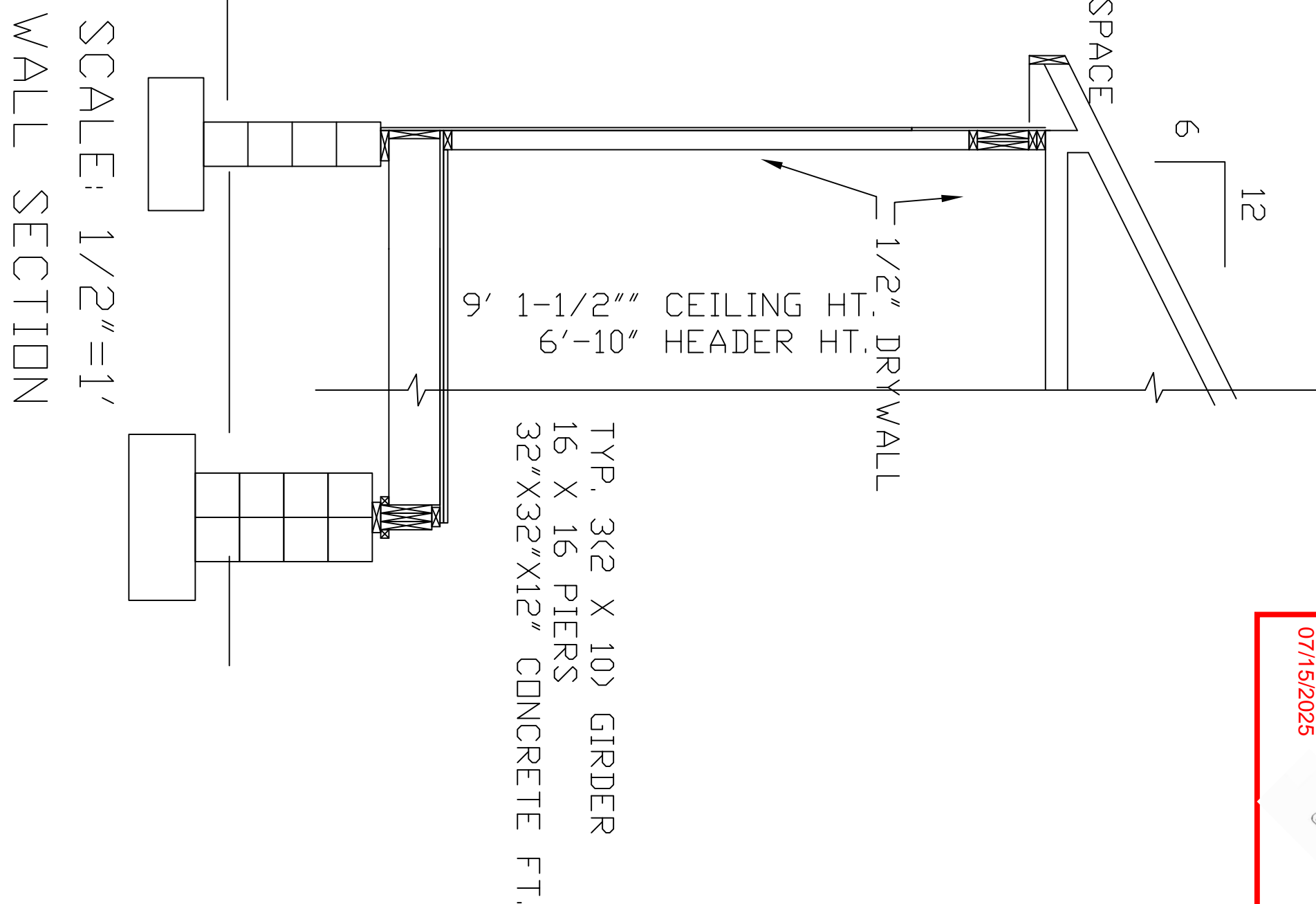
CONT. ROOF VENT
FIBERGLASS SHINGLES
OVER 15 # FELT
TRUSS @ 24" OC
1/2" OSB SHEATHING
R-38 INSULATION
W/BAFFLES EACH RAF. SPACE

ALUMINUM FASCIA
VENTED VINYL SOFFIT

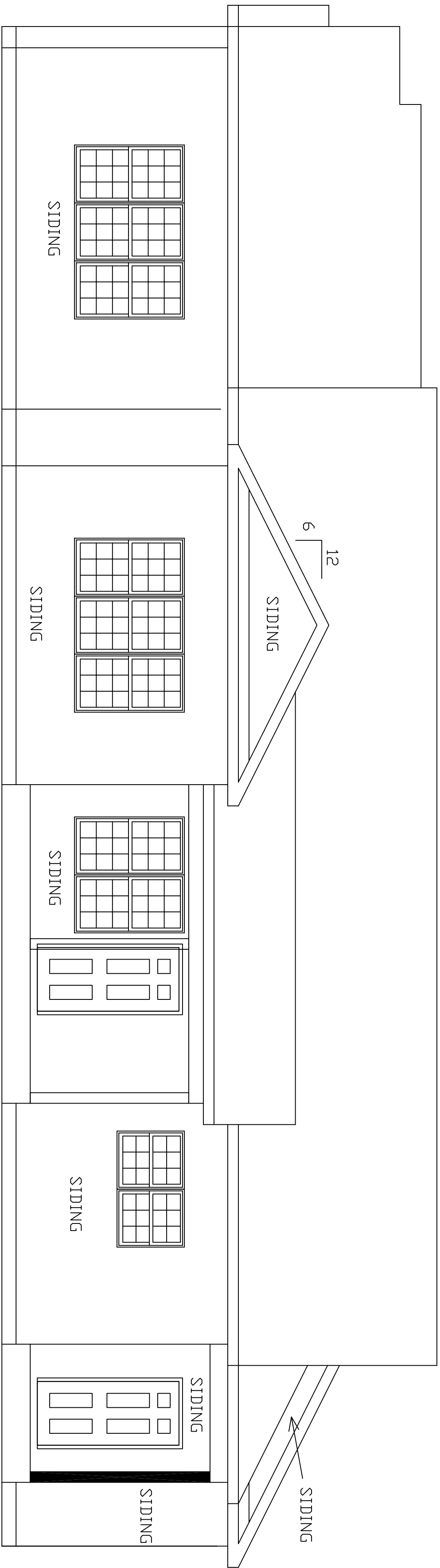
1/2" OSB SHEATHING
HOUSE WRAP
R-15 INSULATION

2 X 10 FLOOR JOIST
2 X 6 MUD SILL
R-19 INSULATION

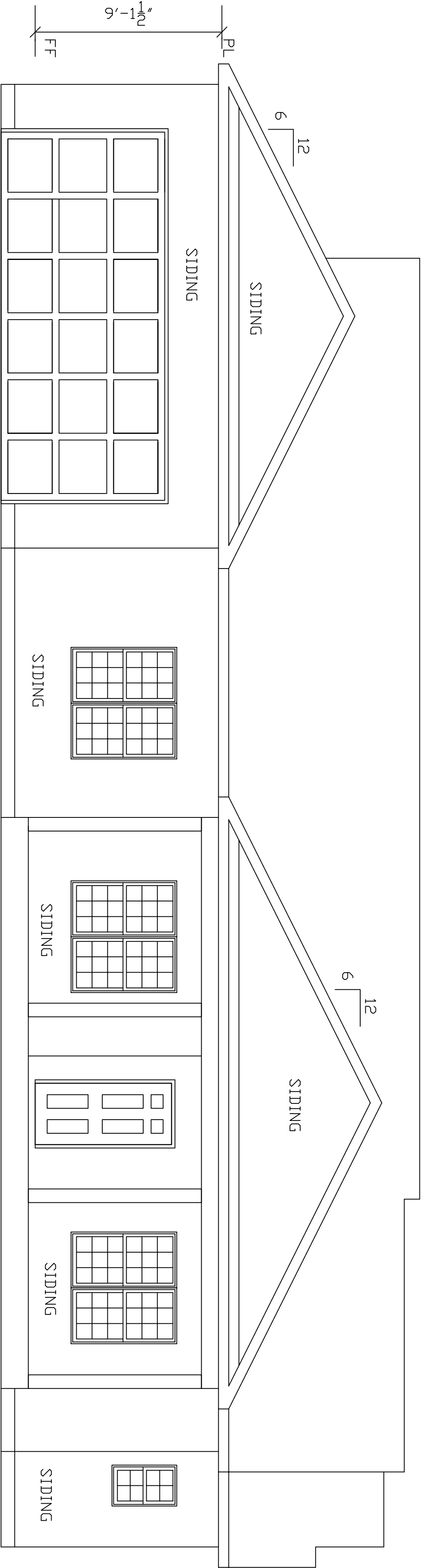
24" WIDE 12" DEEP
CONCRETE FOOTING



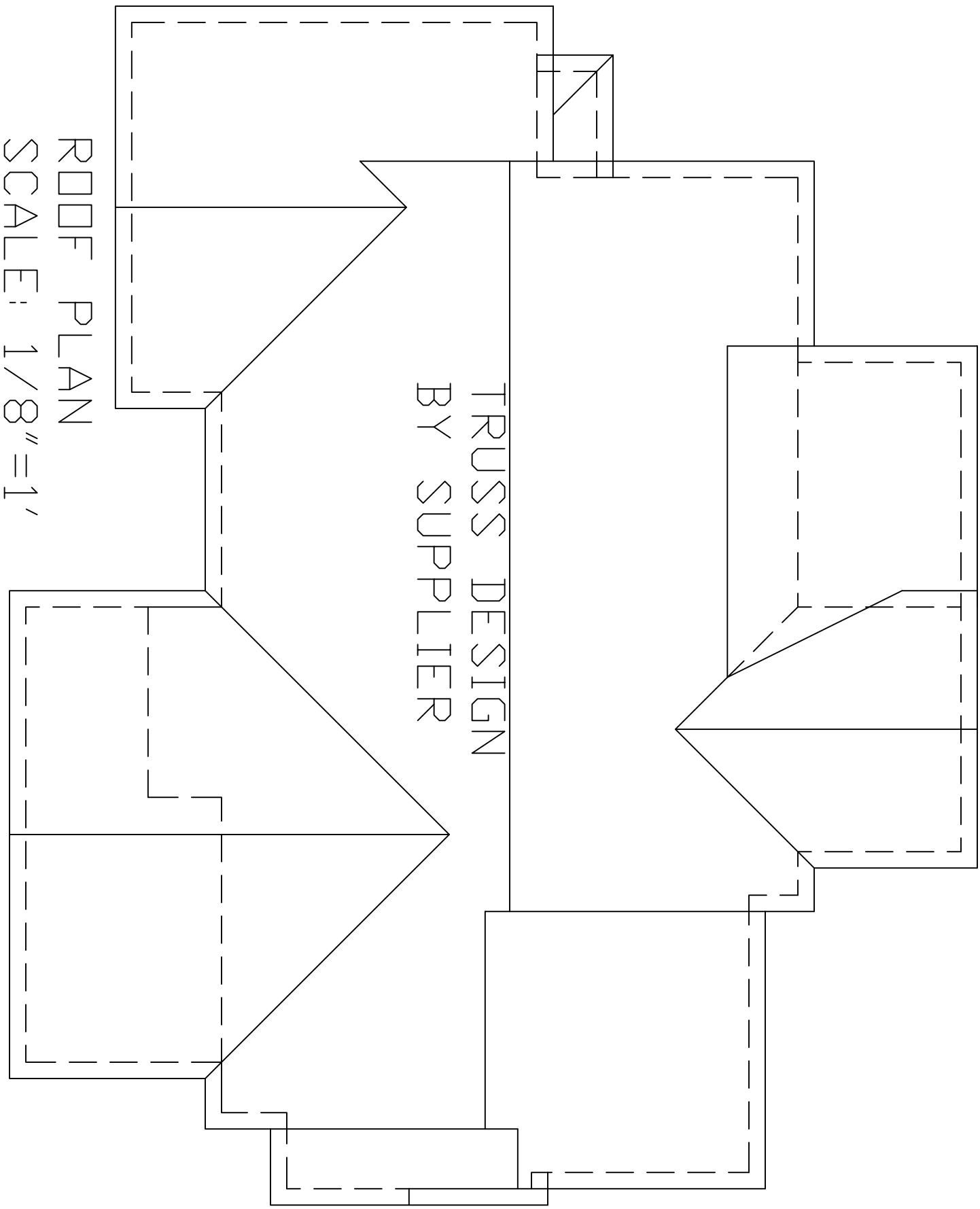
SCALE: 1/2"=1'
WALL SECTION



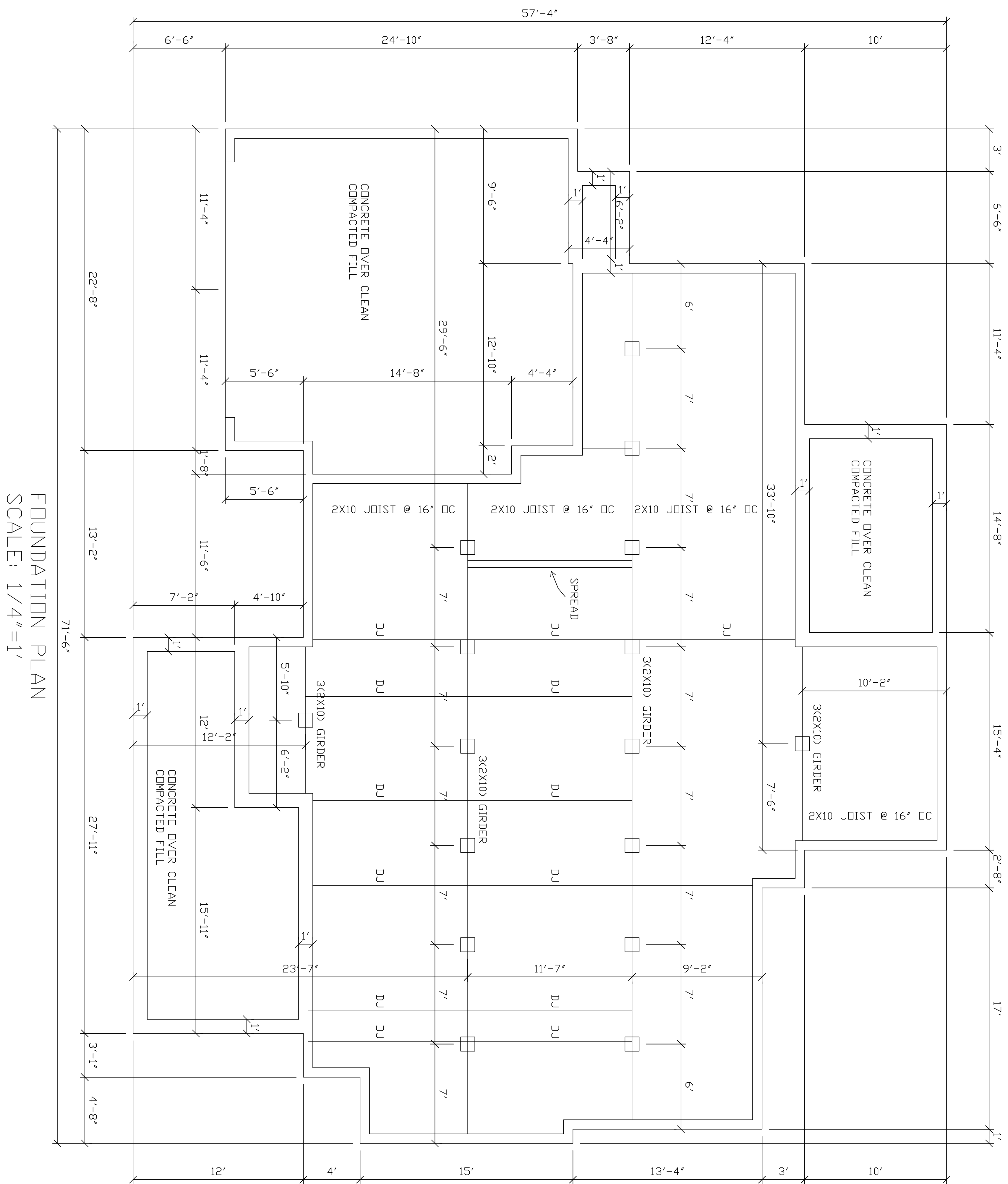
REAR ELEVATION
SCALE: 1/4"=1'



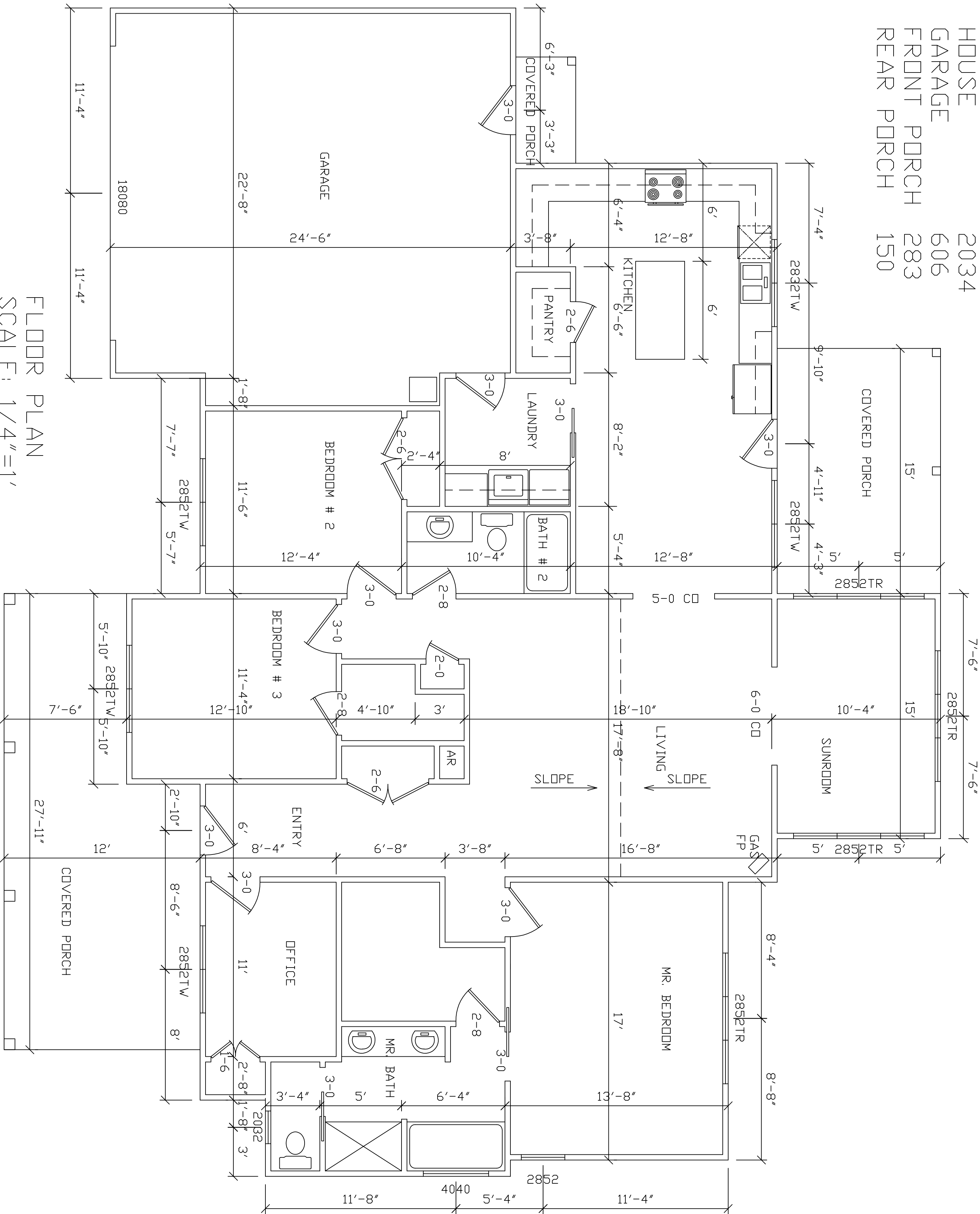
FRONT ELEVATION
SCALE: 1/4"=1'



ROOF PLAN
SCALE: 1/8"=1'



HOUSE 2034
GARAGE 606
FRONT PORCH 283
REAR PORCH 150



FLOOR PLAN
SCALE: 1/4"=1'



TOZA TRUSS LLC
6633 CARL COX RD
BENNETT, NC 27208

Ph: (336) 879-1212 Fax:

| Qty | Name | Girder ID | Truss ID |
|-----|-------|-----------|----------|
| 7 | LUS24 | MG1 | T6A |
| 5 | MUS26 | T5G | S1 |

| | |
|----------------------------------|-------|
| Project TOZ0707-LICATA | Sheet |
| Date 07/07/2025 | |
| Scale 1/10"=1' 0" | |

| Level | | | |
|--------------------|----------------------|---|----------|
| Member Name | Results (Max UTIL %) | Current Solution | Comments |
| Garage Door Header | Passed (49% ΔT) | 2 piece(s) 1 3/4" x 14" 2.0E Microllam® LVL | |

| ForteWEB Software Operator | Job Notes |
|---|-----------|
| James (Jay) Johnson Weyerhaeuser (910) 495-5383 jay.johnson@weyerhaeuser.com | |



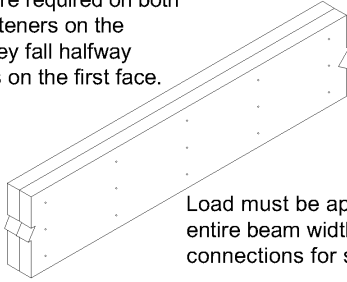
7/8/2025 2:54:53 PM UTC

ForteWEB v3.9

File Name: Sercy - Licata

Top-Loaded Beam

When fasteners are required on both faces, stagger fasteners on the second face so they fall halfway between fasteners on the first face.



Load must be applied evenly across entire beam width. Otherwise, use connections for side-loaded beams.

L6

When connecting 4-ply members, nail each ply to the other and offset nail rows by 2" from rows in the ply below.

| ForteWEB Software Operator | Job Notes |
|---|-----------|
| James (Jay) Johnson Weyerhaeuser (910) 495-5383 jay.johnson@weyerhaeuser.com | |

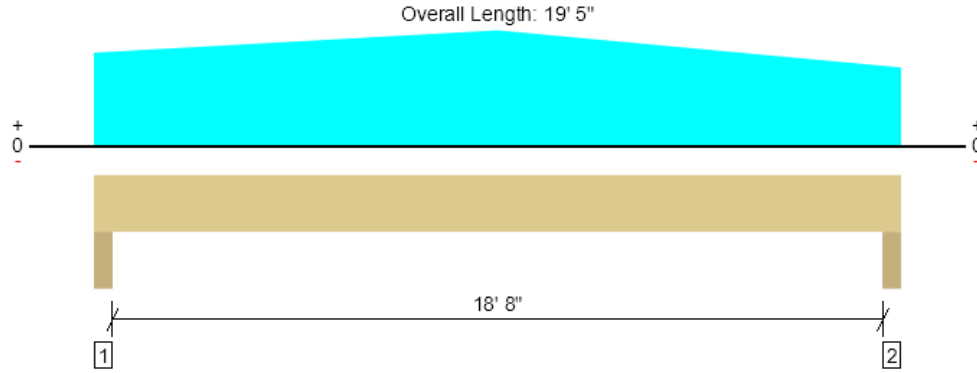


7/8/2025 2:54:53 PM UTC

ForteWEB v3.9

File Name: Sercy - Licata

Level, Garage Door Header
2 piece(s) 1 3/4" x 14" 2.0E Microllam® LVL



Drawing is Conceptual. All locations are measured from the outside face of left support (or left cantilever end). All dimensions are horizontal (typ.).

| Design Results | Actual @ Location | Allowed | Result | LDF | Load: Combination (Pattern) |
|-----------------------|--------------------|---------------|-----------------|------|--------------------------------------|
| Member Reaction (lbs) | 2334 @ 3" | 11419 (4.50") | Passed (20%) | -- | 1.0 D + 0.75 L + 0.75 Lr (All Spans) |
| Shear (lbs) | 1711 @ 1' 6 1/2" | 9310 | Passed (18%) | 1.00 | 1.0 D + 1.0 L (All Spans) |
| Moment (Ft-lbs) | 9510 @ 9' 6 15/16" | 24258 | Passed (39%) | 1.00 | 1.0 D + 1.0 L (All Spans) |
| Live Load Defl. (in) | 0.143 @ 9' 8 1/2" | 0.631 | Passed (L/999+) | -- | 1.0 D + 0.75 L + 0.75 Lr (All Spans) |
| Total Load Defl. (in) | 0.468 @ 9' 8 1/8" | 0.946 | Passed (L/485) | -- | 1.0 D + 0.75 L + 0.75 Lr (All Spans) |

- Deflection criteria: LL (L/360) and TL (L/240).
- Allowed moment does not reflect the adjustment for the beam stability factor.

Member Length : 19' 5"
System : Floor
Member Type : Drop Beam
Building Use : Residential
Building Code : IBC 2018
Design Methodology : ASD

| Supports | Bearing Length | | | Loads to Supports (lbs) | | | | | Accessories |
|-------------------|----------------|-----------|----------|-------------------------|------------|-----------|------|----------|-------------|
| | Total | Available | Required | Dead | Floor Live | Roof Live | Snow | Factored | |
| 1 - Trimmer - SPF | 4.50" | 4.50" | 1.50" | 1606 | 388 | 583 | 291 | 2334 | None |
| 2 - Trimmer - SPF | 4.50" | 4.50" | 1.50" | 1473 | 388 | 583 | 291 | 2201 | None |

| Lateral Bracing | Bracing Intervals | Comments |
|------------------|-------------------|----------|
| Top Edge (Lu) | 15' 7" o/c | |
| Bottom Edge (Lu) | 19' 5" o/c | |

- Maximum allowable bracing intervals based on applied load.

Multiple Member Connections

| Type | Location | Fastener | Placement | Rows | O.C. | # of Fasteners | Details |
|---------|-------------|---|-----------|------|------|----------------|---------|
| Uniform | 0 to 19' 5" | 10d (0.128" x 3") or (0.131" x 3") Nail | One Face | 4 | 12" | -- | L6 |

| Vertical Loads | Location (Side) | Tributary Width | Dead (0.90) | Floor Live (1.00) | Roof Live (1.25) | Snow (1.15) | Comments |
|-----------------------|---------------------------|-----------------|---------------|-------------------|------------------|-------------|-----------------------------|
| 0 - Self Weight (PLF) | 0 to 19' 5" | N/A | 14.3 | -- | -- | -- | |
| 1 - Uniform (PSF) | 0 to 19' 5" (Top) | 2' | 12.0 | 20.0 | -- | -- | Floor - Light attic storage |
| 2 - Uniform (PSF) | 0 to 19' 5" (Top) | 3' | 13.4 | -- | 20.0 | 10.0 | Roof |
| 3 - Tapered (PLF) | 0 to 9' 8 1/2" (Top) | N/A | 60.0 to 120.0 | -- | -- | -- | Gable end wall |
| 4 - Tapered (PLF) | 9' 8 1/2" to 19' 5" (Top) | N/A | 120.0 to 20.0 | -- | -- | -- | Gable end wall |

- Side loads are assumed to not induce cross-grain tension.

Weyerhaeuser Notes

Weyerhaeuser warrants that the sizing of its products will be in accordance with Weyerhaeuser product design criteria and published design values. Weyerhaeuser expressly disclaims any other warranties related to the software. Use of this software is not intended to circumvent the need for a design professional as determined by the authority having jurisdiction. The designer of record, builder or framer is responsible to assure that this calculation is compatible with the overall project. Accessories (Rim Board, Blocking Panels and Squash Blocks) are not designed by this software. Products manufactured at Weyerhaeuser facilities are third-party certified to sustainable forestry standards. Weyerhaeuser Engineered Lumber Products have been evaluated by ICC-ES under evaluation reports ESR-1153 and ESR-1387 and/or tested in accordance with applicable ASTM standards. For current code evaluation reports, Weyerhaeuser product literature and installation details refer to www.weyerhaeuser.com/woodproducts/document-library.

The product application, input design loads, dimensions and support information have been provided by ForteWEB Software Operator

| ForteWEB Software Operator | Job Notes |
|---|-----------|
| James (Jay) Johnson Weyerhaeuser (910) 495-5383 jay.johnson@weyerhaeuser.com | |



7/8/2025 2:54:53 PM UTC
ForteWEB v3.9, Engine: V8.4.3.94, Data: V8.1.7.3
File Name: Sercy - Licata