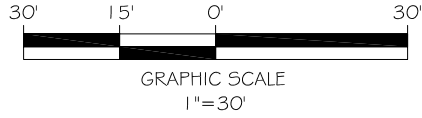
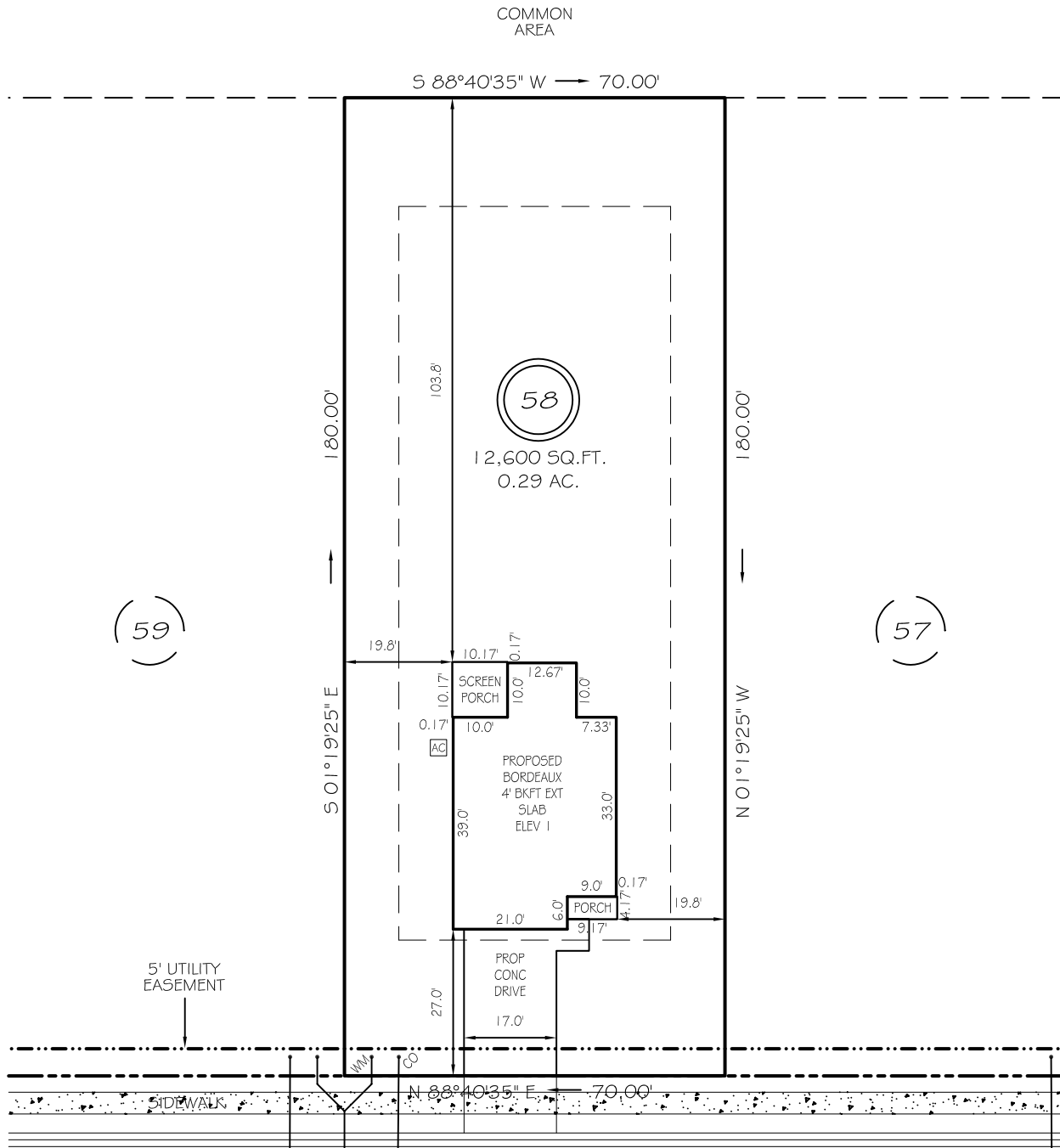


I, MICHAEL P. GRIFFIN, certify that under my direction and supervision this map was drawn from an actual field survey; that the error of closure of the survey as calculated by coordinates is 1: 10,000+; that the area shown hereon was calculated by coordinates. Dashed lines shown hereon were not surveyed.

Witness my hand and seal this day of MONTH 2024.



BK 2023 PGS 658-660
HARNETT CO. REGISTRY



WINDING CREEK DRIVE

50' PUBLIC RW & UTILITY ACCESS

IMPERVIOUS AREAS

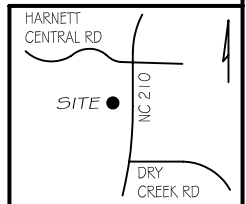
HOUSE	1384 SQ. FT.
DRIVE & WALKS	490 SQ. FT.
AVC PAD	9 SQ. FT.
TOTAL	1883 SQ. FT.
ALLOWED	3800 SQ. FT.

SETBACKS

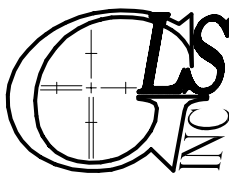
FRONT	25'
REAR	20'
SIDE	10'
CORNER SIDE	20'

LEGEND

EIP	EXISTING IRON PIPE	FES	FLARED END SECTION
IPS	IRON PIPE SET	WM	WATER METER
R/W	RIGHT OF WAY	CO	CLEAN OUT
N/F	NOW OR FORMERLY	FH	FIRE HYDRANT
EIS	EXISTING IRON STAKE	CB	CATCH BASIN



PRELIMINARY
NOT FOR RECORDATION,
SALES OR CONVEYANCE



GRIFFIN LAND SURVEYING, INC.

P.O. BOX 148
FUQUAY-VARINA, NC 27526
(919) - 567 - 1963

FIRM LIC.# C-1345

PLOT PLAN
FOR
DRB HOMES
THE FARM AT
NEILLS CREEK
LOT 58

WINDING CREEK DRIVE
NORTH CAROLINA

HARNETT COUNTY NEILL'S CREEK TWSHP

DRAWN BY **KDF**

DATE **11/11/24**

CHECKED BY **MPG**

SCALE **1" = 30'**