

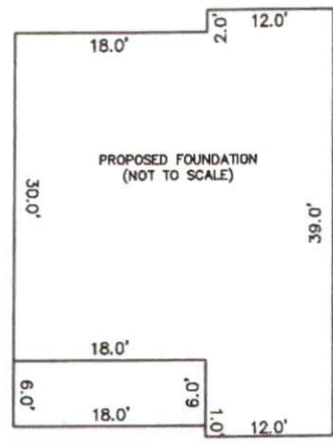
THIS SURVEYOR DOES NOT
WARRANTY THE ACCURACY
OF ARCHITECTURAL DIMENSIONS.
THEY ARE TO BE VERIFIED BY
THE CONTRACTOR.

N/F
CYRUS B. CARTER
& MYKEL S. CARTER
D.B. 2594, PG. 529
P.B. 2014, PG. 230
PIN# 1507-47-5312

N/F
JAMES E. CARTER
& JEAN O. CARTER
D.B. 2955, PG. 368
P.B. 2005, PG. 521
PIN# 1507-47-0187

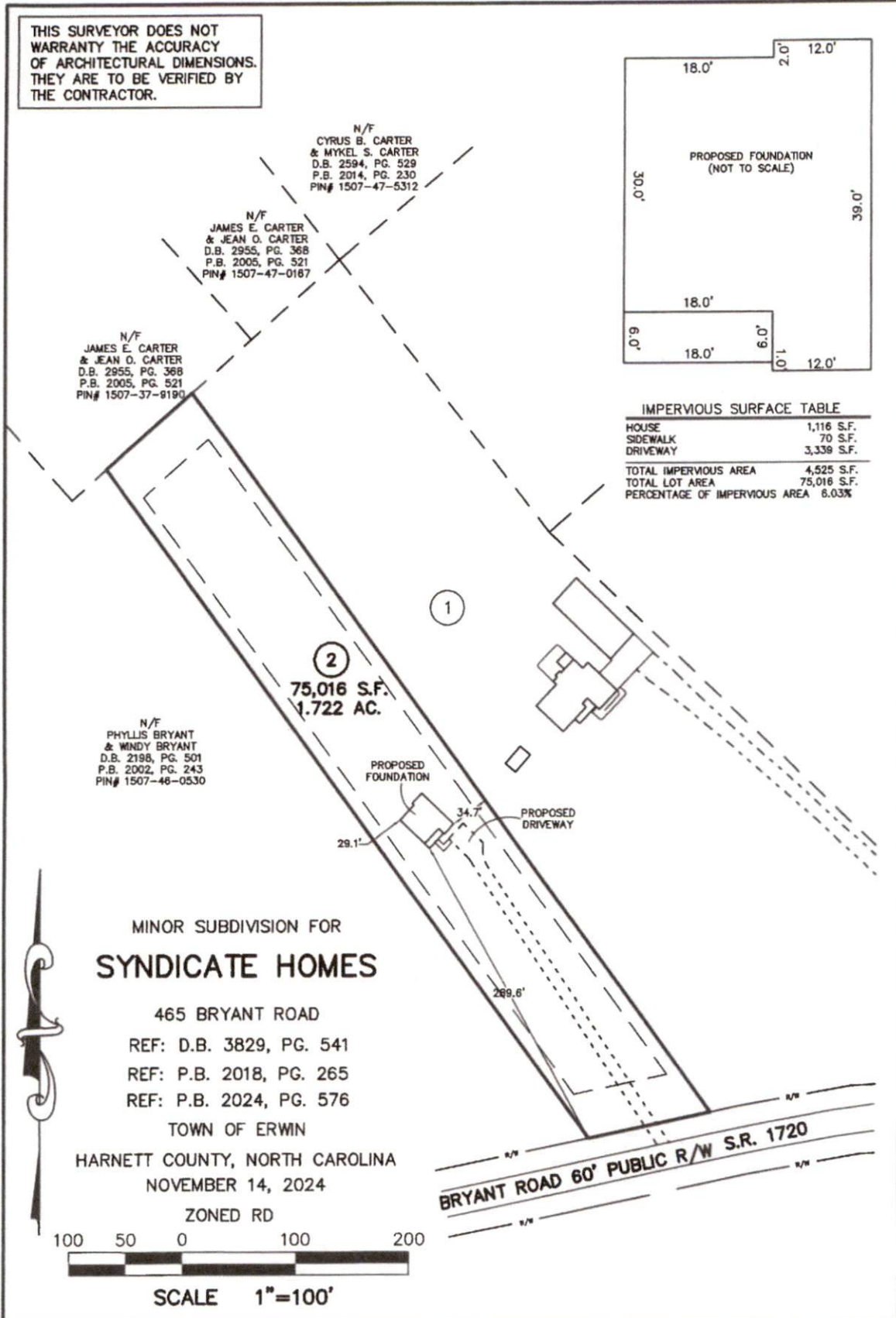
N/F
JAMES E. CARTER
& JEAN O. CARTER
D.B. 2955, PG. 368
P.B. 2005, PG. 521
PIN# 1507-37-8190

N/F
PHYLLIS BRYANT
& WINDY BRYANT
D.B. 2198, PG. 501
P.B. 2002, PG. 243
PIN# 1507-46-0530



IMPERVIOUS SURFACE TABLE

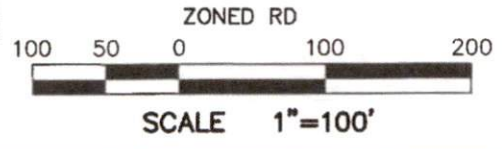
| | |
|-------------------------------|-------------|
| HOUSE | 1,116 S.F. |
| SIDEWALK | 70 S.F. |
| DRIVEWAY | 3,339 S.F. |
| TOTAL IMPERVIOUS AREA | 4,525 S.F. |
| TOTAL LOT AREA | 75,016 S.F. |
| PERCENTAGE OF IMPERVIOUS AREA | 6.03% |



MINOR SUBDIVISION FOR
SYNDICATE HOMES

465 BRYANT ROAD
REF: D.B. 3829, PG. 541
REF: P.B. 2018, PG. 265
REF: P.B. 2024, PG. 576

TOWN OF ERWIN
HARNETT COUNTY, NORTH CAROLINA
NOVEMBER 14, 2024



CMP

Professional Land Surveyors
C-1525

333 S. White Street
Post Office Box 1253
Wake Forest, N.C. 27588
(919)556-3148

NOTES:
-THIS PLAN DOES NOT REFLECT AN
ACTUAL SURVEY. IT IS A PRELIMINARY
PLAN AND SHOULD BE USED FOR ITS
INTENDED PURPOSE ONLY.
-NOT FOR RECORDATION, CONVEYANCES,
OR SALES.