

SITE PLAN FOR
NEW HOME, INC. LLC
 217 DUNCAN CREEK ROAD
 LOT 124, DUNCAN'S CREEK PHASE 1
 UPPER LITTLE CREEK TOWNSHIP, HARNETT COUNTY, NORTH CAROLINA

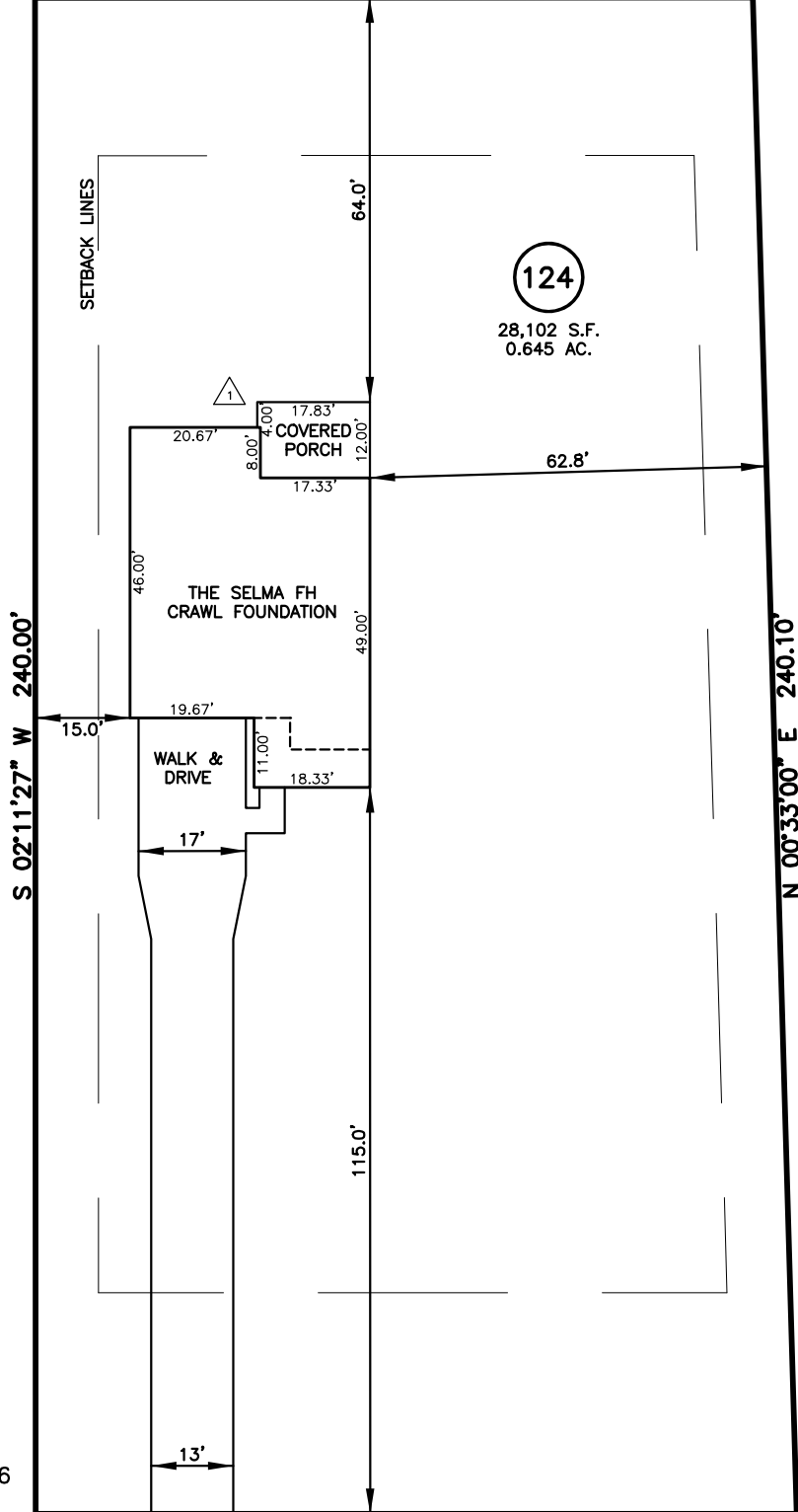
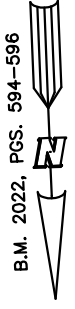
134

133

N 87°48'33" W 113.66'

LEGEND

- ▲ AIR CONDITIONER
- BC BACK OF CURB
- BFP BACK FLOW PREVENTER
- CLEANOUT
- CURB INLET
- DHS DRILL HOLE SET
- ECM EXISTING CONCRETE MONUMENT
- EDH EXISTING DRILL HOLE
- EIS EXISTING IRON STAKE
- EIP EXISTING IRON PIPE
- EM ELECTRIC METER
- EPK EXISTING PK NAIL
- ES ELECTRIC SUB
- FLS FLARED END SECTION
- FH FIRE HYDRANT
- FOP FIBER OPTIC PEDESTAL
- GM GAS METER
- GUY GUY
- INV. INVERT
- IPS IRON PIPE SET
- IRS IRON ROD SET
- LP LIGHT POLE
- MNS MAGNETIC NAIL SET
- MS MANHOLE SANITARY SEWER
- MS MANHOLE STORM SEWER
- OHV OVERHEAD WIRES
- PKS PK NAIL SET
- PNS POINT NOT SET
- RRS RAIL ROAD SPIKE
- TEPE TELEPHONE PEDESTAL
- TRF TRANSFORMER
- CTV CABLE TV PEDESTAL
- UP UTILITY POLE
- WM WATER METER
- WV WATER VALVE
- YI YARD INLET
- FM FIELD MEASUREMENT
- △ REVISION TRIANGLE



123

125

S 02°11'27" W 240.00'

N 00°33'00" E 240.10'

S 87°48'33" E 120.53'

DUNCAN CREEK ROAD
50' PUBLIC R/W

SETBACK INFO

- FRONT: 35'
- REAR: 25'
- SIDES: 10'
- CORNER SIDE: 20'

REFERENCES:

B.M. 2022, PGS. 594-596

IMPERVIOUS SURFACES	
HOUSE	1,810 S.F.
WALK & DRIVE	1,800 S.F.
PORCH	210 S.F.
TOTAL	3,820 S.F.



SCALE: 1" = 30'

THIS IS A SITE PLAN AS DEFINED BY G.S. 160D-102 AND IS NOT INTENDED TO BE ATTACHED TO ANY INSTRUMENT RECORDED IN THE REGISTER OF DEEDS OFFICE

△ PORCH OVERLAP

SITE PLAN
NOT FOR RECORDATION,
CONVEYANCE OR SALES

REV CODE: 1.FLIP, 2.PLAN, 3.ROTATE, 4.MOVE, 5.SS
6.SEVERAL OF ABOVE, 7.LAND FEATURE, 8. OTHER

REV1: NOV. 05, 2024(8)
DATE: OCT. 30, 2024

F.B. _____

RWK, PA

ENGINEERING ~ SURVEYING

CORPORATE LICENSE: C-1771
 101 W. MAIN ST., SUITE 202
 GARNER, NC 27529
 PHONE (919) 779-4854
 FAX (919) 779-4056