

Trenco  
818 Soundside Rd  
Edenton, NC 27932

Re: CGRTPST  
A05 bearing repair letter

The truss drawing(s) referenced below have been prepared by Truss Engineering Co. under my direct supervision based on the parameters provided by Stock Building Supply.

Pages or sheets covered by this seal: T36746298 thru T36746298

My license renewal date for the state of North Carolina is December 31, 2025.

North Carolina COA: C-0844



March 21, 2025

Velez, Joaquin

**IMPORTANT NOTE:** The seal on these truss component designs is a certification that the engineer named is licensed in the jurisdiction(s) identified and that the designs comply with ANSI/TPI 1. These designs are based upon parameters shown (e.g., loads, supports, dimensions, shapes and design codes), which were given to MiTek or TRENCO. Any project specific information included is for MiTek's or TRENCO's customers file reference purpose only, and was not taken into account in the preparation of these designs. MiTek or TRENCO has not independently verified the applicability of the design parameters or the designs for any particular building. Before use, the building designer should verify applicability of design parameters and properly incorporate these designs into the overall building design per ANSI/TPI 1, Chapter 2.

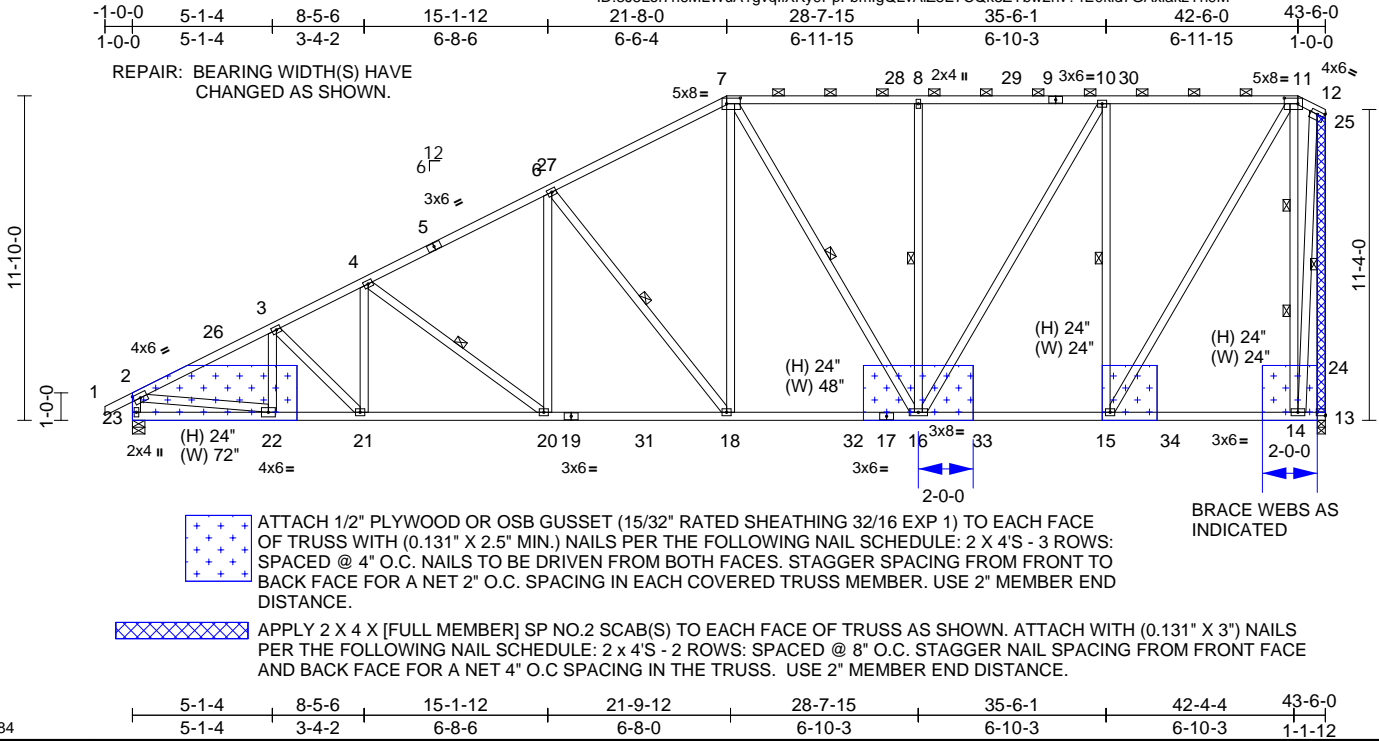
Job	Truss	Truss Type	Qty	Ply	A05 bearing repair letter	Units: 1.0
CGRTPST	A05	Piggyback Base	1	1	Job Reference (optional)	Eng: T.L T36746298

Builders FirstSource (Middlesex, NC), Middlesex, NC - 27557,

Run: 8.63 E Aug 30 2023 Print: 8.630 E Aug 30 2023 MiTek Industries, Inc. Fri Mar 21 08:40:09

Page: 1

ID:3J5Lof7n6MLWuA1gvqliXKy9Ppl-bmlgQLvAiZ8E7CQk5ZYbw2hv?4E0kid7GAxiakzYn9M



Scale = 1:84

Plate Offsets (X, Y): [2:0-2-15,0-2-0], [7:0-6-0,0-2-8], [11:0-6-0,0-2-8], [12:0-3-0,0-1-8], [13:Edge,0-1-8]

Loading	(psf)	Spacing	2-0-0	CSI	DEFL	in	(loc)	l/defl	L/d	PLATES	GRIP
TCLL (roof)	20.0	Plate Grip DOL	1.15	TC	0.89	Vert(LL)	-0.20	16-18	>999	360	MT20
TCDL	10.0	Lumber DOL	1.15	BC	0.82	Vert(CT)	-0.38	16-18	>999	240	244/190
BCLL	0.0*	Rep Stress Incr	YES	WB	0.87	Horz(CT)	0.10	13	n/a	n/a	
BCDL	10.0	Code	IRC2015/TPI2014	Matrix-MS		Wind(LL)	0.12	18-20	>999	240	Weight: 390 lb FT = 20%

<b>LUMBER</b>		<b>WEBS</b>		7-18=-41/809, 8-16=-439/140, 10-15=-1266/217, 11-14=-1563/312, 11-15=-157/1770, 12-14=-144/1677, 6-20=0/447, 10-16=-127/964, 7-16=-355/89, 6-18=-731/156, 4-20=-382/100, 3-22=-267/57, 2-22=-65/2088		TOP CHORD UNDER PIGGYBACKS TO BE LATERALLY BRACED BY PURLINS AT 2-0-0 OC. MAX. (TYPICAL)	
TOP CHORD	2x4 SP No.2						
BOT CHORD	2x4 SP No.2						
WEBS	2x4 SP No.3 *Except*						
	13-12,15-11,16-10,16-7:2x4 SP No.2						
LBR SCAB	13-12 SP No.2 both sides						
<b>BRACING</b>		<b>NOTES</b>					
TOP CHORD	Structural wood sheathing directly applied or 3-2-14 oc purlins, except end verticals, and 2-0-0 oc purlins (3-8-15 max.): 7-11.	1) N/A					
BOT CHORD	Rigid ceiling directly applied or 8-11-7 oc bracing.	2) Unbalanced roof live loads have been considered for this design.					
WEBS	1 Row at midpt 8-16, 10-15, 12-13, 7-16, 6-18, 4-20	3) Wind: ASCE 7-10; Vult=115mph (3-second gust) Vasd=91mph; TCDL=6.0psf; BCDL=6.0psf; h=32ft; Cat. II; Exp B; Enclosed; MWFRS (envelope) exterior zone and C-C Exterior (2) -1-0-0 to 3-4-3, Interior (1) 3-4-3 to 21-8-0, Exterior (2) 21-8-0 to 27-9-13, Interior (1) 27-9-13 to 42-6-0, Exterior (2) 42-6-0 to 43-4-4 zone; cantilever left and right exposed ; end vertical left and right exposed;C-C for members and forces & MWFRS for reactions shown; Lumber DOL=1.60 plate grip DOL=1.60					
WEBS	2 Rows at 1/3 pts 11-14	4) Provide adequate drainage to prevent water ponding.					
REACTIONS	(lb/size) 13=1727/0-3-8, 23=1798/0-5-8 Max Horiz 23=359 (LC 9) Max Uplift 13=-111 (LC 9), 23=-120 (LC 12) Max Grav 13=1860 (LC 2), 23=1798 (LC 1)	5) All plates are 3x4 MT20 unless otherwise indicated.					
FORCES	(lb) - Max. Comp./Max. Ten. - All forces 250 (lb) or less except when shown.	6) This truss has been designed for a 10.0 psf bottom chord live load nonconcurrent with any other live loads.					
TOP CHORD	2-26=-2692/164, 3-26=-2606/176, 3-4=-2704/207, 4-5=-2451/191, 5-6=-2382/213, 6-27=-1979/191, 7-27=-1971/226, 7-28=-1551/199, 8-28=-1551/199, 8-29=-1551/199, 9-29=-1551/199, 9-10=-1551/199, 10-30=-1059/179, 11-30=-1059/179, 11-12=-292/189, 13-24=-1811/121, 24-25=-1811/121, 12-25=-1811/121, 2-23=-1733/149	7) * This truss has been designed for a live load of 20.0psf on the bottom chord in all areas where a rectangle 3-06-00 tall by 2-00-00 wide will fit between the bottom chord and any other members, with BCDL = 10.0psf.					
BOT CHORD	22-23=-433/468, 21-22=-394/2336, 20-21=-369/2392, 19-20=-334/2131, 19-31=-334/2131, 18-31=-334/2131, 18-32=-265/1706, 17-32=-265/1706, 16-17=-265/1706, 16-33=-165/1059, 15-33=-165/1059	8) Provide mechanical connection (by others) of truss to bearing plate capable of withstanding 111 lb uplift at joint 13 and 120 lb uplift at joint 23.					
		9) Graphical purlin representation does not depict the size or the orientation of the purlin along the top and/or bottom chord.					
		<b>LOAD CASE(S)</b> Standard					



March 21,2025

**WARNING - Verify design parameters and READ NOTES ON THIS AND INCLUDED MITEK REFERENCE PAGE MII-7473 rev. 1/2/2023 BEFORE USE.**

Design valid for use only with MiTek® connectors. This design is based only upon parameters shown, and is for an individual building component, not a truss system. Before use, the building designer must verify the applicability of design parameters and properly incorporate this design into the overall building design. Bracing indicated is to prevent buckling of individual truss web and/or chord members only. Additional temporary and permanent bracing is always required for stability and to prevent collapse with possible personal injury and property damage. For general guidance regarding the fabrication, storage, delivery, erection and bracing of trusses and truss systems, see **ANSI/TPI1 Quality Criteria and DSB-22** available from Truss Plate Institute (www.tpinst.org) and **BCSI Building Component Safety Information** available from the Structural Building Component Association (www.sbcacompnents.com)

ENGINEERING BY  
**TRENCO**  
A MiTek Affiliate

818 Soundside Road  
Edenton, NC 27932

# Symbols

## PLATE LOCATION AND ORIENTATION



\* Plate location details available in MITek software or upon request.

## PLATE SIZE

**4 X 4**

The first dimension is the plate width measured perpendicular to slots. Second dimension is the length parallel to slots.

## LATERAL BRACING LOCATION



Indicated by symbol shown and/or by text in the bracing section of the output. Use T or I bracing if indicated.

## BEARING



Indicates location where bearings (supports) occur. Icons vary but reaction section indicates joint number/letter where bearings occur. Min size shown is for crushing only.

## Industry Standards:

ANSI/TP1: National Design Specification for Metal Plate Connected Wood Truss Construction.  
DSB-22: Building Component Safety Information, Guide to Good Practice for Handling, Installing, Restraining & Bracing of Metal Plate Connected Wood Trusses.

# Numbering System



**JOINTS ARE GENERALLY NUMBERED/LETTERED CLOCKWISE AROUND THE TRUSS STARTING AT THE JOINT FARTHEST TO THE LEFT.**

**CHORDS AND WEBS ARE IDENTIFIED BY END JOINT NUMBERS/LETTERS.**

# Product Code Approvals

ICC-ES Reports:  
ESR-1988, ESR-2362, ESR-2685, ESR-3282  
ESR-4722, ESL-1388

# Design General Notes

Trusses are designed for wind loads in the plane of the truss unless otherwise shown.  
Lumber design values are in accordance with ANSI/TP1 section 6.3. These truss designs rely on lumber values established by others.

© 2023 MITek® All Rights Reserved

# General Safety Notes

**Failure to Follow Could Cause Property Damage or Personal Injury**

1. Additional stability bracing for truss system, e.g. diagonal or X-bracing, is always required. See BCSI.
2. Truss bracing must be designed by an engineer. For wide truss spacing, individual lateral braces themselves may require bracing, or alternative Tor I bracing should be considered.
3. Never exceed the design loading shown and never stack materials on inadequately braced trusses.
4. Provide copies of this truss design to the building designer, erection supervisor, property owner and all other interested parties.
5. Cut members to bear tightly against each other.
6. Place plates on each face of truss at each joint and embed fully. Knots and wane at joint locations are regulated by ANSI/TP1 1.
7. Design assumes trusses will be suitably protected from the environment in accord with ANSI/TP1 1.
8. Unless otherwise noted, moisture content of lumber shall not exceed 19% at time of fabrication.
9. Unless expressly noted, this design is not applicable for use with fire retardant, preservative treated, or green lumber.
10. Camber is a non-structural consideration and is the responsibility of truss fabricator. General practice is to camber for dead load deflection.
11. Plate type, size, orientation and location dimensions indicated are minimum plating requirements.
12. Lumber used shall be of the species and size, and in all respects, equal to or better than that specified.
13. Top chords must be sheathed or purlins provided at spacing indicated on design.
14. Bottom chords require lateral bracing at 10 ft. spacing, or less, if no ceiling is installed, unless otherwise noted.
15. Connections not shown are the responsibility of others.
16. Do not cut or alter truss member or plate without prior approval of an engineer.
17. Install and load vertically unless indicated otherwise.
18. Use of green or treated lumber may pose unacceptable environmental, health or performance risks. Consult with project engineer before use.
19. Review all portions of this design (front, back, words and pictures) before use. Reviewing pictures alone is not sufficient.
20. Design assumes manufacture in accordance with ANSI/TP1 1 Quality Criteria.
21. The design does not take into account any dynamic or other loads other than those expressly stated.

**MITek®**

ENGINEERING BY  
**TRENCO**  
A MITek Affiliate

MITek Engineering Reference Sheet: MII-7473 rev. 1/2/2023