

I, MICHAEL P. GRIFFIN, certify that under my direction and supervision this map was drawn from an actual field survey; that the error of closure of the survey as calculated by coordinates is 1: 10,000+; that the area shown hereon was calculated by coordinates. Dashed lines shown hereon were not surveyed.

Witness my hand and seal this day of MONTH 2024.

30' 15' 0' 30'



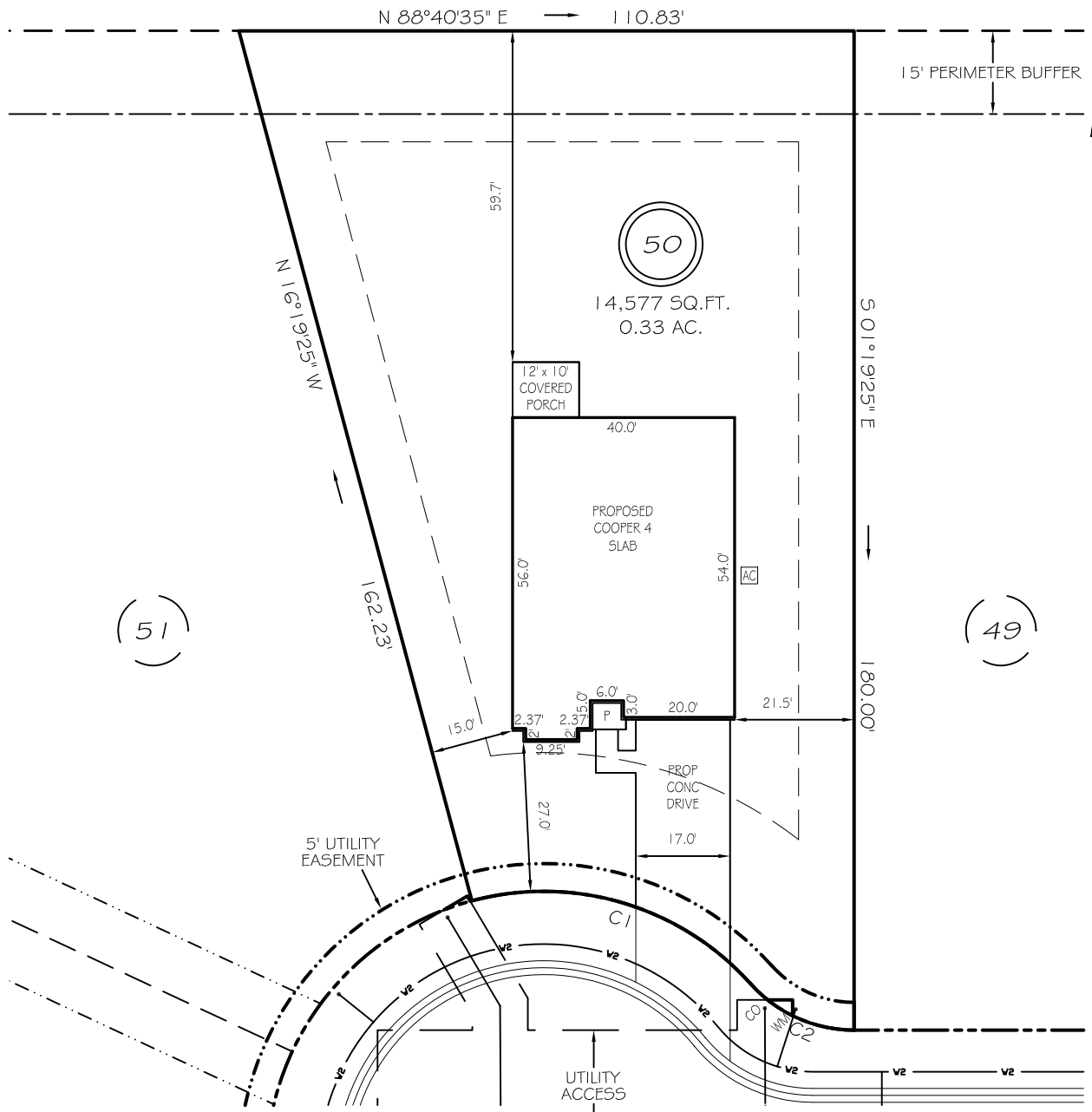
GRAPHIC SCALE

1"=30'

N/F
HARNETT CENTRAL HOLDERS, LLC
TRACT 4 OF
DB 3734, PG 952
PB 2019, PG 115



BK 2023 PCS 658-660
HARNETT CO. REGISTRY



WINDING CREEK DRIVE

50' PUBLIC RW & UTILITY ACCESS

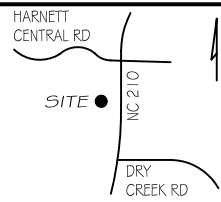
SETBACKS

IMPERVIOUS AREAS

HOUSE	2356 SQ. FT.
DRIVE & WALKS	691 SQ. FT.
AC PAD	9 SQ. FT.
TOTAL	3056 SQ. FT.
ALLOWED	3800 SQ. FT.

FRONT	25'
REAR	20'
SIDE	10'
CORNER SIDE	20'

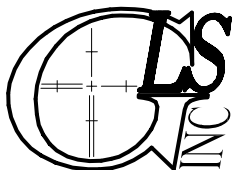
C1 R=50.00' L=55.14' N74°43'44"W 52.39'
C2 R=25.00' L=21.03' N67°13'44"W 20.41'



P R E L I M I N A R Y
NOT FOR RECORDATION,
SALES OR CONVEYANCE

LEGEND

EIP	EXISTING IRON PIPE	FES	FLARED END SECTION
IPS	IRON PIPE SET	WM	WATER METER
RAW	RIGHT OF WAY	CO	CLEAN OUT
N/F	NOW OR FORMERLY	FH	FIRE HYDRANT
EIS	EXISTING IRON STAKE	CB	CATCH BASIN



GRIFFIN LAND SURVEYING, INC.

P. O. BOX 148
FUQUAY-VARINA, NC 27526
(919) - 567 - 1963

FIRM LIC.# C-1345

PLOT PLAN
FOR
DRB HOMES
THE FARM AT
NEILLS CREEK
LOT 50

592 WINDING CREEK DRIVE

NORTH CAROLINA

HARNETT COUNTY NEILL'S CREEK TWSHP

DRAWN BY **KDF**

DATE **11/6/24**

CHECKED BY **MPG**

SCALE **1" = 30'**