

**General Notes:**  
 - Per ANSI/TPI 1-2002 all "Truss to Wall" connections are the responsibility of the Building Designer, not the Truss Manufacturer.  
 - Dimensions are Feet-Inches- Sixteenths.

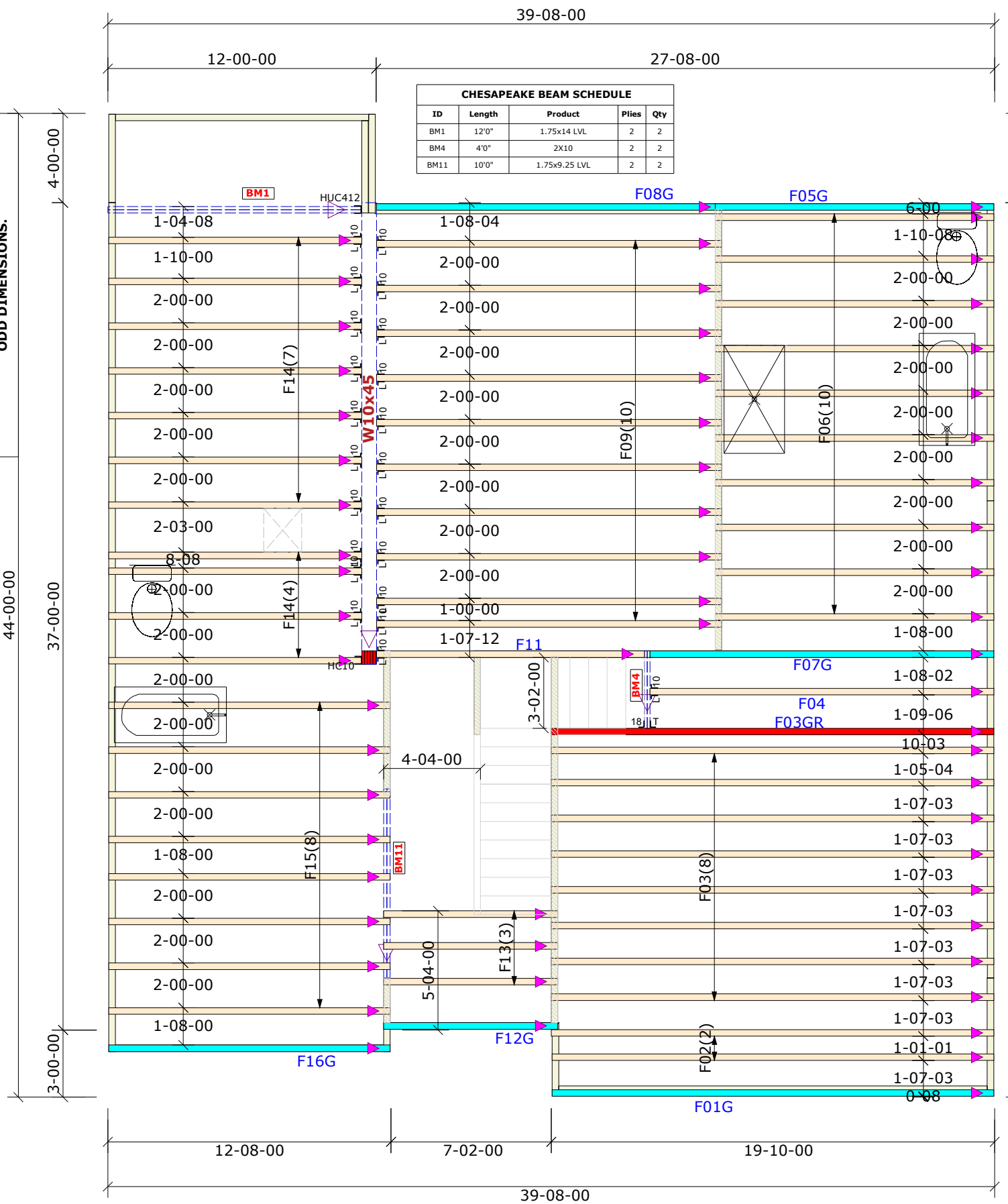
- Trusses are to be 24" o.c. unless noted otherwise (U.N.O.)  
 - Trusses are not designed to support brick U.N.O.  
 - Do not cut or modify trusses without first contacting Builders FirstSource.  
 - Immediately contact Builders FirstSource if trusses are damaged.

**Connection Notes:**  
 - All hangers are to be Simpson or equivalent U.N.O.  
 - Use Manufacturer's specifications for all hanger connections U.N.O.  
 - Use 10d x 1 1/2" Nails in hanger connections to single ply roof girder trusses.

**Floor Notes:**  
 - Shift truss as required to avoid plumbing traps.  
 - Installation Contractor and/or Field Supervisor are to verify all dimensions, trap locations, and options prior to installation.

**Dimension Notes:**  
 - Drawing not to scale. Do not scale dimensions

TRUSSES SPACED AT 24" o.c. UNLESS NOTED OTHERWISE. FOLLOW DIMENSION STRING FOR ODD DIMENSIONS.



NOTE: LEFT END OF TRUSS AS SHOWN ON TRUSS DETAIL DRAWINGS ARE INDICATED ON LAYOUT BY TRIANGLE ICONS

### 3D View 1st Level

Hanger List		All Tie Downs H2.5T Unless noted	
1	THA218-2	T <sub>J</sub>	U <sub>18</sub>
1	HUC410	L <sub>J</sub>	
1	HUC412	H <sub>J</sub>	L <sub>12</sub>
22	LUS410	H <sub>J</sub>	L <sub>10</sub>

**Special Items List**

Misc Material	
Chesapeake	
6260	Elev: D
The Farms	
Harnett County	NC
Lot:	157
Appwright #	
Permit (4238271)	
Code:	IRC 2015
Loading:	
T.C.L.L.	40
T.C.D.L.	10
B.C.L.L.	0
B.C.D.L.	5
Designed By:	CFC
Layout:	D-FL-R
L/O Date:	09/26/2024
Revision History	
Rev1:	xx/xx/xx
Rev2:	xx/xx/xx
Rev3:	xx/xx/xx
Wind:	
M.P.H.	115
Exposure Category	
B (Wooded areas/other)	
Pick Ticket:	---
Job No.:	---
Sales No.:	---
Acct No.:	---

**Hatch Legend**

	Attic Room
	Volume Ceiling
	Stick Framing