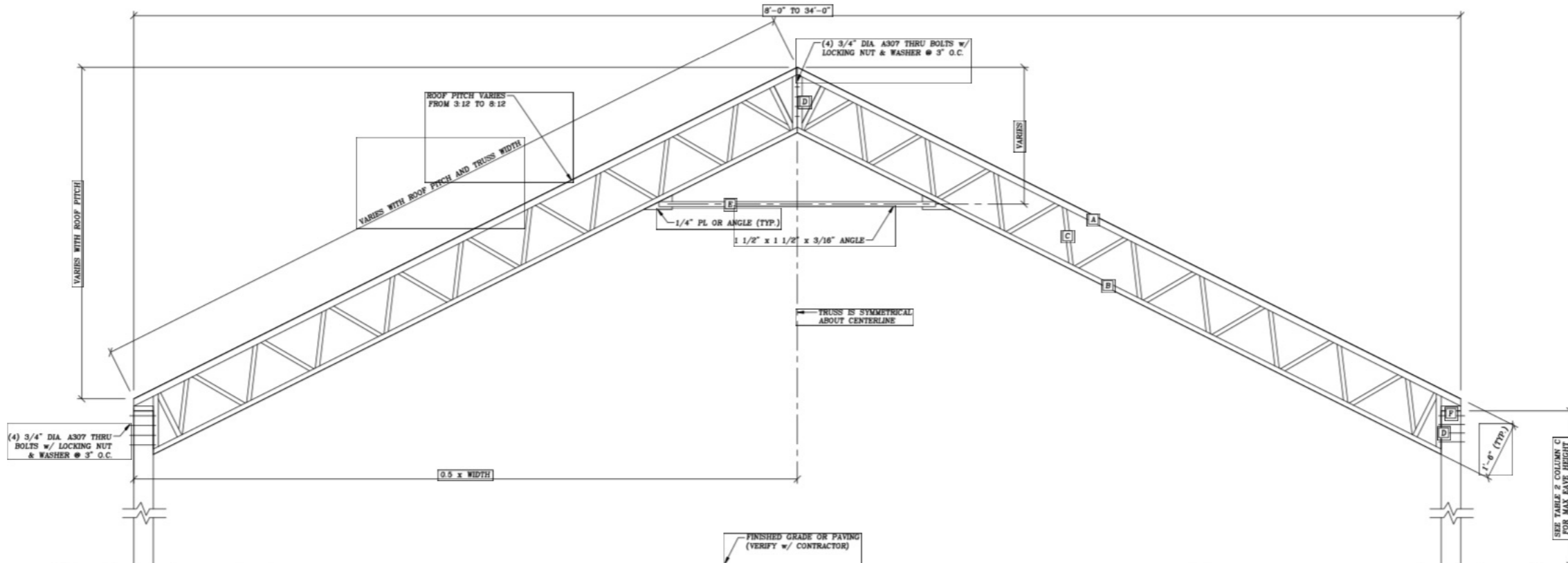


**DESIGN LOADS:**

- STRUCTURAL DESIGN IS IN ACCORDANCE WITH THE 2018 NCR. REFER TO RELEVANT CODE FOR ADDITIONAL INFORMATION.
- THE E.O.R IS NOT RESPONSIBLE FOR ANY ERRORS OR MISTAKES ASSOCIATED WITH DIMENSIONING, ARCHITECTURAL DETAILING, WATERPROOFING, PLUMBING, ELECTRICAL, OR MECHANICAL INFORMATION OR ANY PART OF THE PLAN NOT PERTAINING TO THE STRUCTURAL INFORMATION.
- THE CONTRACTOR IS RESPONSIBLE FOR VERIFYING ALL DIMENSIONS AND NOTIFYING THE E.O.R OF ANY CHANGES OR NECESSARY CORRECTIONS.



**NOTES FOR WELDS & CONNECTORS:**

- 16ga. STEEL-FORMED CUPS SHOP WELDED TO TOP CHORD OF TRUSSES
- EACH 2x6 PURLIN ATTACHED TO EACH STEEL CUP w/ (4) SCREW CONNECTOR

(A) 8'-0" TO 34'-0" WIDE TRUSS, SEE TABLE 2 COLUMN D FOR SPACING (WET SET EMBEDMENT)

(SI) 3/4" = 1'-0"

SEE TABLE 2 COLUMN A

SEE TABLE 2 COLUMN B (DEEP AUGERED HOLE w/ CONCRETE FILL AROUND PT POSTS)

6" MINIMUM CONCRETE DEPTH UNDER POSTS

**MATERIAL LIST:**

- A - TOP CHORD L 1 1/2" x 1 1/2" x 3/16"
- B - BOTTOM CHORD L 1 1/2" x 1 1/2" x 3/16"
- C - DIAGONAL WEB L 1 1/4" x 1 1/4" x 1/8"
- D - VERTICAL END L 1 1/2" x 1 1/2" x 3/16"
- E - HORIZONTAL TIE L 1 1/4" x 1 1/4" x 3/16"
- F - BASE L 1 1/2" x 1 1/2" x 3/16"

**GENERAL NOTES:**

- TRUSS DEPTH = 18" (18" CHORD) (1)-HORIZONTAL TIE RODS
- TRUSS SPACING = 12'-0" O.C.
- TOP CHORD PURLIN SPACE @ 2'-0" O.C. (2" x 6" SPF NO.1 PURLINS MIN.)
- EACH 2" x 6" ATTACHED TO EACH STEEL CUP w/ MIN. (2) #12 x 1 1/2" EA. SIDE
- BOTTOM CHORD BRACING / BOTTOM CHORD PURLIN SPACE @ 6'-0" O.C. (MAX.)
- ALL WELDS SHALL BE 3/16" MINIMUM FILLET WELD (TYP.)
- ALL STEEL SHALL BE A36 MINIMUM STRENGTH
- CONNECTION BOLTS, STEEL TO STEEL SHALL BE A307 MIN.
- ROOF MATERIAL, 28ga. METAL, 36" WIDE MATERIAL, 7' O.C. HORIZONTAL, 24" MAX SPAN
- STEEL TRUSS BOTTOM CHORDS ARE DESIGNED FOR 5 PSF MAX LOAD, NO CEILING FINISH

**DESIGN LOAD:**

- DL = 14 psf
- LL = 20 psf
- SL = 20 psf (GROUND)
- WL = 120 mph
- EXPOSURE CATEGORY C
- RISK CATEGORY I OR II
- DESIGN SOIL BEARING CAPACITY = ±2,000 psf
- ±3,000 psf MINIMUM CONCRETE STRENGTH MIX

TABLE 2				
SCENARIO	A	B	C	D
2A	8x6 POSTS	18" DIA.x4FT. PIERS	UP TO 14'-0" EAVE HEIGHT	12" SPACING
2B	8x6 POSTS	24" DIA.x4FT. PIERS	16'-0" EAVE HEIGHT	12" SPACING



Digitally signed by Jim Lee, P.E.  
Reason: I am approving this document with my legally binding signature  
Location: 1378 Melviney St, Statesville, NC 28677, USA  
Date: 2024.08.14 18:30:55-04'00'

LEE SOLUTIONS & SERVICES, PLLC  
1378 MELVINEY STREET  
STATESVILLE, NC 28677-3722  
(980) 223-5999  
www.LSSPLLC.com  
ENGINEERING LICENSE # P-2722



LEE SOLUTIONS & SERVICES, PLLC  
1378 MELVINEY STREET  
STATESVILLE, NC 28677-3722  
(980) 223-5999  
www.LSSPLLC.com

PROJECT NAME:  
8'-0" TO 34'-0" WIDE TRUSS  
3.12 TO 8.12 ROOF PITCH  
12'-0" SPACING  
(WET SET EMBEDMENT)

OWNER:  
[BAR IRONWORKS]

PROJECT ADDRESS:  
NORTH CAROLINA  
USA

PROJECT NUMBER:  
NC24062

DATE:  
08/14/2024

DRAWN BY:  
C. REICH

CHECKED:  
[AS NOTED]

APPROVED BY:  
J. LEE

PROJECT FILE:  
[BAR TRUSS DIAGRAMS  
(WET SET EMBEDMENT)]

DRAWING NUMBER:  
SI 01 1