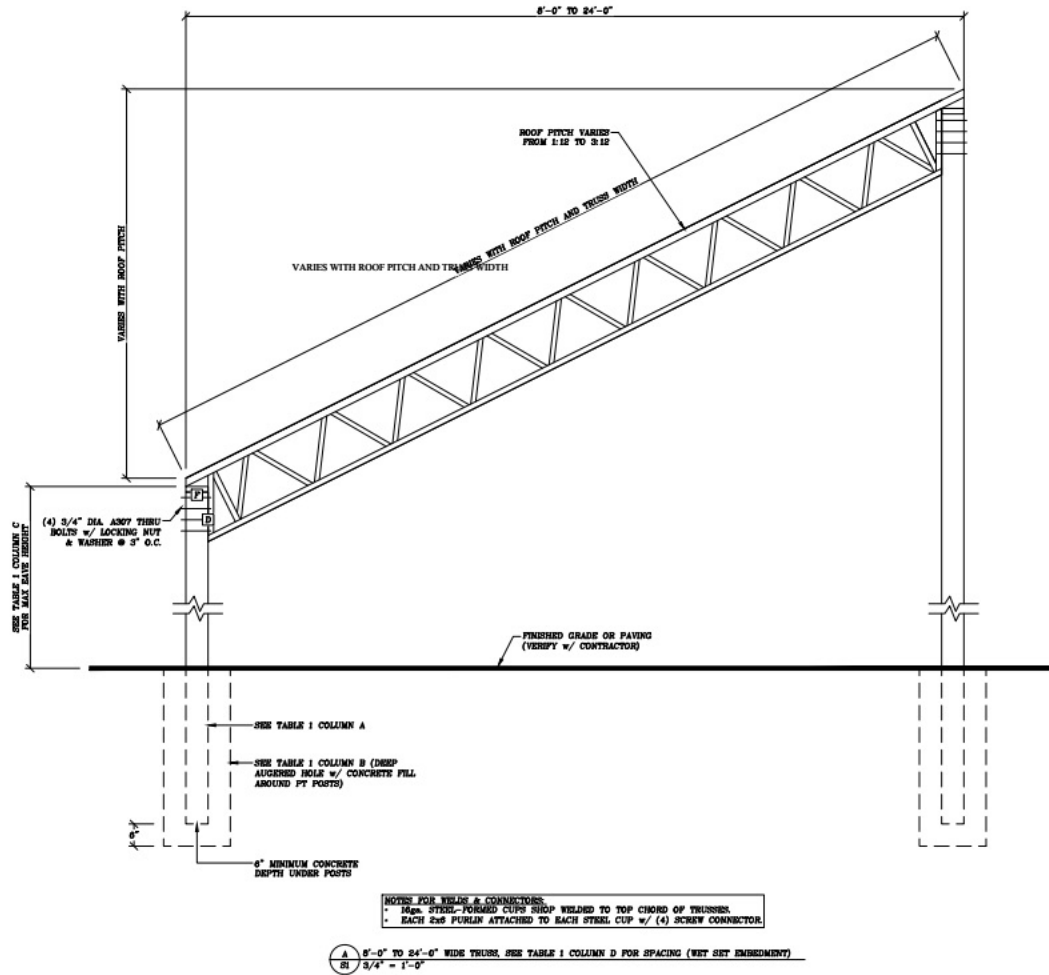


DESIGN LOADS.

1. STRUCTURAL DESIGN IS IN ACCORDANCE WITH THE 2018 NCBC. REFER TO RELEVANT CODE FOR ADDITIONAL INFORMATION.
2. THE E.O.R. IS NOT RESPONSIBLE FOR ANY ERRORS OR MISTAKES ASSOCIATED WITH DIMENSIONING, ARCHITECTURAL DETAILING, WATERPROOFING, PLUMBING, ELECTRICAL, OR MECHANICAL INFORMATION OR ANY PART OF THE PLAN NOT PERTAINING TO THE STRUCTURAL INFORMATION.
3. THE CONTRACTOR IS RESPONSIBLE FOR VERIFYING ALL DIMENSIONS AND NOTIFYING THE E.O.R. OF ANY CHANGES OR NECESSARY CORRECTIONS.



- NOTES FOR WELDS & CONNECTORS:**
- Min. STEEL-FORMED CUPS SHD WP WELDED TO TOP CHORD OF TRUSSES.
 - EACH 2x8 PURLIN ATTACHED TO EACH STEEL CUP w/ (4) SCREW CONNECTOR.

- A** 8'-0" to 24'-0" WIDE TRUSS, SEE TABLE I COLUMN D FOR SPACING (WET SET EMBEDMENT)
B 3/4" - 1'-0"

MATERIAL LST:

- A - TOP CHORD L 1 1/2" x 1 1/2" x 3/16"
- B - BOTTOM CHORD L 1 1/2" x 1 1/2" x 3/16"
- C - DIAGONAL WEB L 1 1/4" x 1 1/4" x 1/8"
- D - VERTICAL END L 1 1/2" x 1 1/2" x 3/16"
- E - HORIZONTAL END L 1 1/4" x 1 1/4" x 3/16"
- F - BASE L 1 1/2" x 1 1/2" x 3/16"

- GENERAL NOTES:**
- TRUSS DEPTH = 18" (18" CHORD) (1)-HORIZONTAL THE ROOF.
 - TRUSS SPACING = 10'-0" TO 12'-0" O.C.
 - TOP CHORD PURLIN SPACE @ 2'-0" O.C. (2' x 6" SPP NO.1 PURLIN MIN).
 - EACH 2' x 6" ATTACHED TO EACH STEEL CUP w/ MIN. (2) #12 x 1 1/2" EA. SIDE
 - BOTTOM CHORD BRACING / BOTTOM CHORD PURLIN SPACE @ 8'-0" O.C. (MAX).
 - ALL WELDS SHALL BE 3/16" MINIMUM WELLY FIELD (TYP).
 - ALL STEEL SHALL BE A36 MINIMUM STRENGTH.
 - CONNECTION BOLTS STEEL TO STEEL SHALL BE A307 MEX.
 - ROOF MATERIAL: 30ga. METAL, 3/4" WIDE MATERIAL, 7" O.C. HORIZONTAL, 24" MAX SPAN.
 - STEEL TRUSS BOTTOM CHORDS ARE DESIGNED FOR 8 PPF MAX LOAD, NO CEILING FINISH.

- DESIGN LOAD:**
- DL = 14 psf
 - LL = 30 psf
 - SL = 30 psf (GROUND)
 - WL = 120 psf
 - EXPOSURE CATEGORY C
 - RISK CATEGORY I or II
 - WIND SOIL BEARING CAPACITY = 2.5,000 psf
 - 2.5,000 psf MINIMUM CONCRETE STRENGTH MIX

TABLE 1				
SCENARIO	A	B	C	D
1A	6x6 POSTS	18" DIA.x4FT. plers	UP TO 16'-0" EAVE HEIGHT	12' SPACING
1B	8x8 POSTS	24" DIA.x4FT. plers	18'-0" EAVE HEIGHT	10' SPACING



Digitally signed by Jim Lee, P. E.
 Reason: I am approving this document with my legally binding signature
 Location: 1378 Melviney St, Statesville, NC 28677, USA
 Date: 2024.08.14
 18:30:29-04'00'

Professional seal area containing the seal of Lee Solutions & Services, P.L.L.C. and the company name and address: 1378 Melviney Street, Statesville, NC 28677-3702. Below the seal is a table with columns for 'NO.', 'DATE', and 'BY'. Further down is a section for 'PROJECT NAME' and 'PROJECT ADDRESS' with the following details: PROJECT NAME: 8'-0" to 24'-0" WIDE TRUSS 1:12 TO 3:12 ROOF FITCH 10'-0" TO 12'-0" SPACING (WET SET EMBEDMENT); PROJECT ADDRESS: NORTH CAROLINA USA; PROJECT NUMBER: NC24082; DATE: 08/14/2024; DRAWN BY: C. REICH; SCALE: AS NOTED; APPROVED BY: J. LEE; SHEET TITLE: BAR TRUSS DIAGRAMS (WET SET EMBEDMENT); DRAWING NUMBER: S1 of 1.