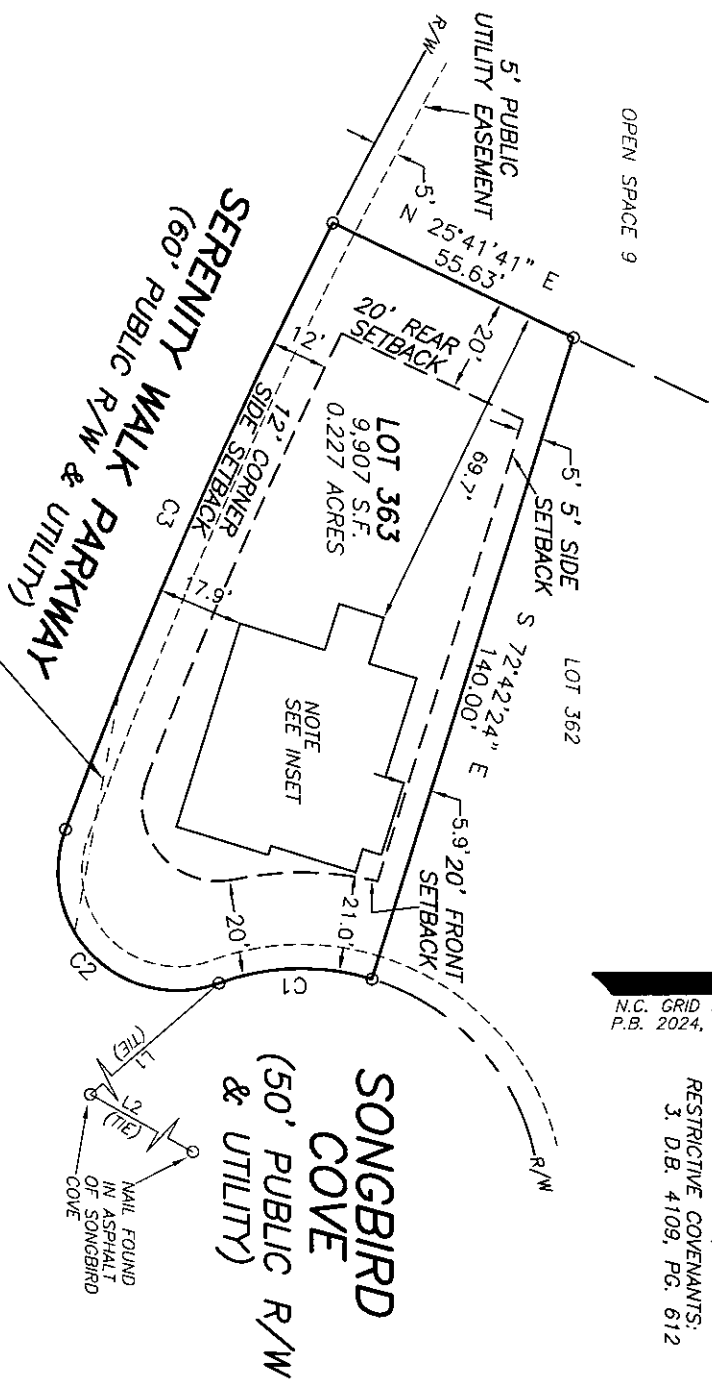
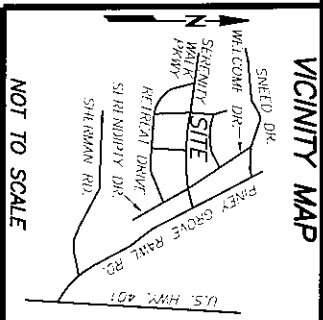
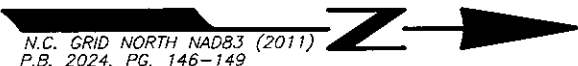
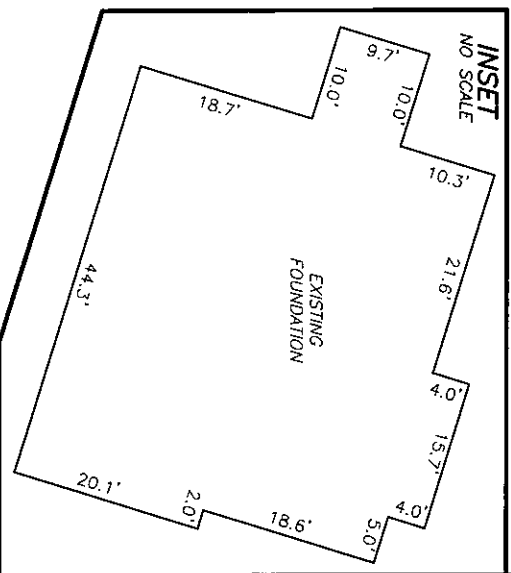


CURVE TABLE						
CURVE	DELTA	RADIUS	ARC	CHORD	TANGENT	CHORD BRG
C1	37°23'29"	50.00'	32.63'	32.05'	16.92'	S 01°24'09" E
C2	130°26'40"	25.00'	56.92'	45.40'	54.16'	S 45°07'26" W
C3	6°45'57"	1,170.00'	138.16'	138.08'	69.16'	N 66°16'15" W

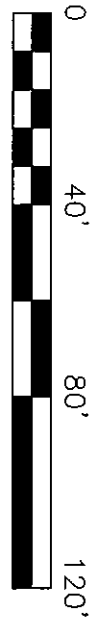
LINE TABLE		
LINE	BEARING	DISTANCE
L1	S 40°48'49" E	74.15'
L2	N 29°23'12" E	75.36'



SETBACKS
 >43' LOT WIDTHS
 FRONT YARD-20'
 SIDE YARD-5'
 REAR YARD-20'
 CORNER SIDE-12'



FOUNDATION SURVEY FOR
DREES HOMES



REFERENCE: PLAT BOOK 2024 PAGE 146-149.

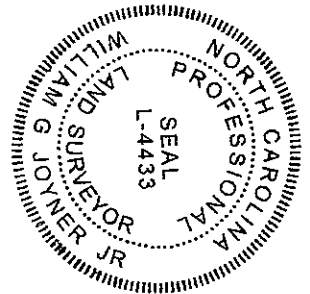
LOT 363 SERENITY SUBDIVISION
 PHASE 2A
 15 SONGBIRD COVE
 HARNETT COUNTY
 FUQUAY-VARINA, N.C. 27526

- NOTES:
1. ALL EASEMENTS, RIGHTS OF WAY AND BOUNDARY INFORMATION TAKEN FROM P.B. 2024, PG. 146-149 UNLESS OTHERWISE NOTED.
 2. PROPERTY IS SUBJECT TO ALL EASEMENTS AND RESTRICTIONS OF RECORD. NO TITLE EXAMINATION HAS BEEN DONE BY ROBINSON & PLANTE, P.C.

NOTE:
 RATIO OF PRECISION IS 1:10,000+. MISCLASURE WAS DISTRIBUTED BY THE COMPASS METHOD. THE DISTANCES ON THIS MAP ARE ADJUSTED HORIZONTAL GROUND UNLESS NOTED OTHERWISE. ALL AREAS ARE CALCULATED BY COORDINATE COMPUTATION.

I CERTIFY THAT THIS MAP WAS DRAWN UNDER MY SUPERVISION FROM AN ACTUAL SURVEY MADE UNDER MY SUPERVISION. DESCRIPTION RECORDED IN REFERENCES AS SHOWN. THAT THE BOUNDARIES NOT SURVEYED ARE INDICATED AS DRAWN FROM INFORMATION IN THAT THE RATIO OF PRECISION IS 1:10,000+. AND THAT THIS MAP MEET THE REQUIREMENTS OF THE STANDARDS OF PRACTICE FOR LAND SURVEYING IN NORTH CAROLINA (21 NCAC 56.16000).

THIS 3rd DAY OF JANUARY, 2025,
William G. Joyner Jr.
 PROFESSIONAL LAND SURVEYOR L-4433



ROBINSON & PLANTE PC
 LAND SURVEYING
 C-2687
 970 TRINITY ROAD
 RALEIGH, N.C. 27607
 PHONE (919) 859-6030
 FAX (919) 859-6032

DATE: 1-2-25 SCALE: 1"=40'

FILE: STYL01363FD