

Job 72429366REP1	Truss A1	Truss Type Truss	Qty 6	Ply 1	Prof - HOLLY GEORGIAN RH ROOF Job Reference (optional)
---------------------	-------------	---------------------	----------	----------	-----------------------------------------------------------

UFP Mid Atlantic LLC, 5631 S. NC 62, Burlington, NC, Kelly Langley

Run: 8.73 S Jul 24 2024 Print: 8.810 S Sep 13 2024 MiTek Industries, Inc. Mon Jan 27 16:23:11

Page: 1

ID:VmqZuL\_O24YibbFdhGXsLtyMEut-EBzXX45rkvXqXatzJOwwTYd4ejalnWBReL8YMgzr6l

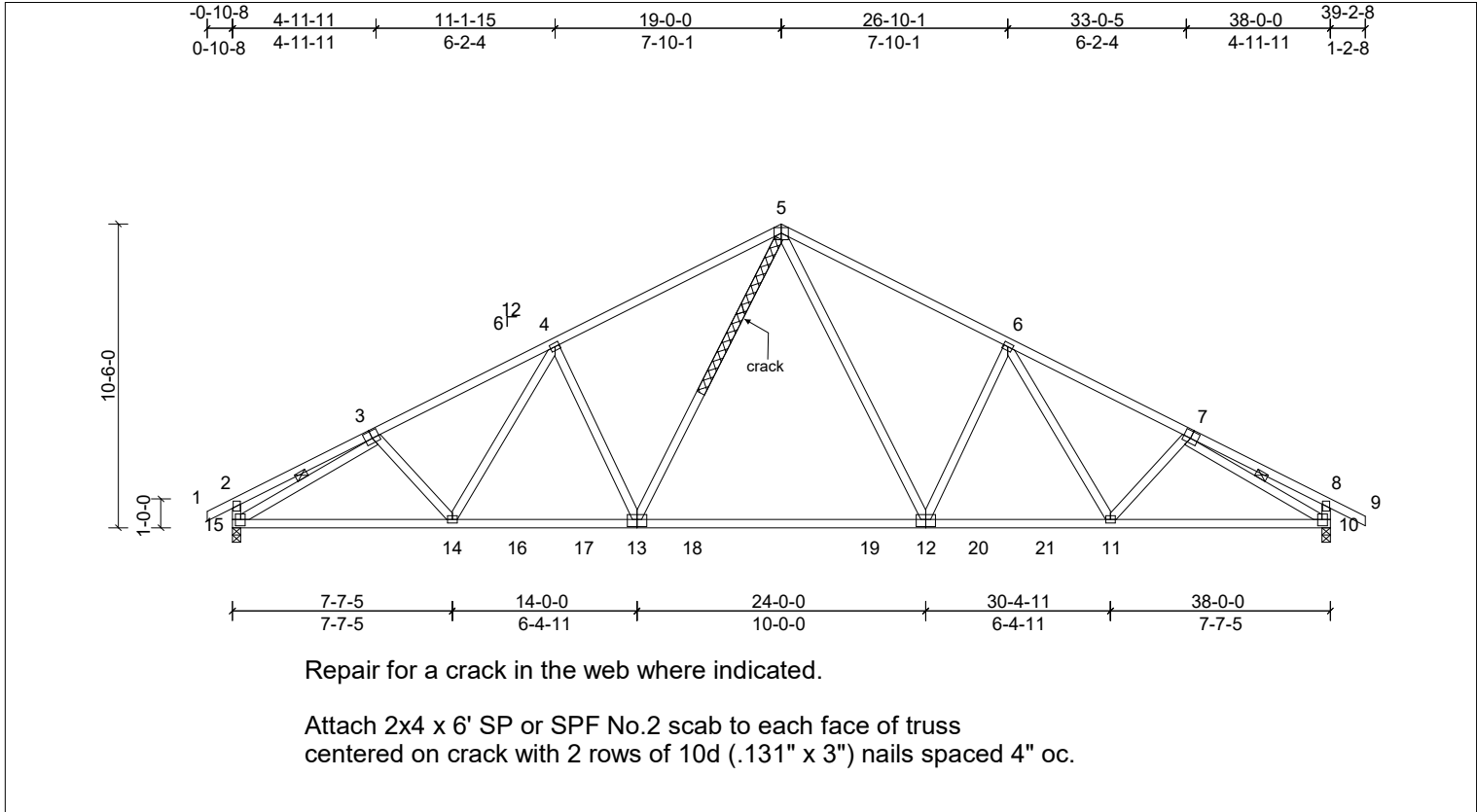


Plate Offsets (X, Y): [3:0-3-0,0-3-0], [7:0-3-0,0-3-0], [10:0-1-12,0-2-12], [12:0-4-0,0-3-0], [13:0-4-0,0-3-0], [15:0-1-12,0-2-12]

Loading	(psf)	Spacing	2-0-0	CSI	DEFL	in	(loc)	l/defl	L/d	PLATES	GRIP
TCLL (roof)	20.0	Plate Grip DOL	1.15	TC	Vert(LL)	-0.35	12-13	>999	240	MT20	244/190
TCDL	10.0	Lumber DOL	1.15	BC	Vert(CT)	-0.64	12-13	>702	180		
BCLL	0.0 *	Rep Stress Incr	YES	WB	Horz(CT)	0.10	10	n/a	n/a		
BCDL	10.0	Code	IRC2015/TPI2014	Matrix-MSH						Weight: 226 lb	FT = 20%

LUMBER		BRACING	
TOP CHORD	2x4 SP No.1 "Except" T1,T3;2x4 SP No.2	TOP CHORD	Structural wood sheathing directly applied, except end verticals.
BOT CHORD	2x4 SP No.1	BOT CHORD	Rigid ceiling directly applied or 9-4-1 oc bracing.
WEBS	2x4 SP No.3	WEBS	1 Row at midpt 3-15, 7-10

REACTIONS	(lb/size)	10=1590/0-3-8, (min. 0-1-14), 15=1569/0-3-8, (min. 0-1-14)
Max Horiz	15=159 (LC 8)	
Max Uplift	10=234 (LC 11), 15=226 (LC 10)	

FORCES	(lb) - Max Comp./Max. Ten. - All forces 250 (lb) or less except when shown.
TOP CHORD	2-3=-369/143, 3-4=-2303/671, 4-5=-2089/707, 5-6=-2088/706, 6-7=-2300/667, 7-8=-345/124, 2-15=-347/192, 8-10=-358/205
BOT CHORD	14-15=-440/1989, 14-16=-336/1956, 16-17=-336/1956, 13-17=-336/1956, 13-18=-110/1436, 18-19=-110/1436, 12-19=-110/1436, 12-20=-334/1954, 20-21=-334/1954, 11-21=-334/1954, 10-11=-434/1982
WEBS	3-15=-2064/536, 7-10=-2082/550, 4-13=-536/321, 5-13=-211/815, 5-12=-210/813, 6-12=-534/319

- NOTES (7)**
- Unbalanced roof live loads have been considered for this design.
  - Wind: ASCE 7-10; Vult=130mph (3-second gust) Vasd=103mph; TCCL=6.0psf; BCDL=6.0psf; h=35ft; Cat. II; Exp B; Enclosed; MWFRS (envelope) exterior zone and C-C Exterior (2) zone; cantilever left and right exposed; end vertical left and right exposed; C-C for members and forces & MWFRS for reactions shown; Lumber DOL=1.60 plate grip DOL=1.60
  - This truss has been designed for a 10.0 psf bottom chord live load nonconcurrent with any other live loads.
  - \* This truss has been designed for a live load of 20.0psf on the bottom chord in all areas where a rectangle 3-06-00 tall by 2-00-00 wide will fit between the bottom chord and any other members, with BCDL = 10.0psf.
  - Provide mechanical connection (by others) of truss to bearing plate capable of withstanding 226 lb uplift at joint 15 and 234 lb uplift at joint 10.
  - This truss is designed in accordance with the 2015 International Residential Code sections R502.11.1 and R802.10.2 and referenced standard ANSI/TPI 1.
  - This repair has been prepared based on information and use conditions supplied by client. Designer has made a good faith effort to outline damage and repair conditions as reported by client. When actual field conditions do not approximate those indicated on this drawing, client shall immediately inform the engineer and refrain from applying the repair.



This design is based upon parameters shown, and is for an individual building component to be installed and loaded vertically. Applicability of design parameters and proper incorporation of component is responsibility of the Building Designer. Building Designer shall verify all design information on this sheet for conformance with conditions and requirements of the specific building and governing codes and ordinances. Building Designer accepts responsibility for the correctness or accuracy of the design information as it may relate to a specific building. Certification is valid only when truss is fabricated by a UFPI plant. Bracing shown is for lateral support of truss members only and does not replace erection and permanent bracing. Refer to Building Component Safety Information (BCSI) for general guidance regarding storage, erection and bracing available from SBCA and Truss Plate Institute.

