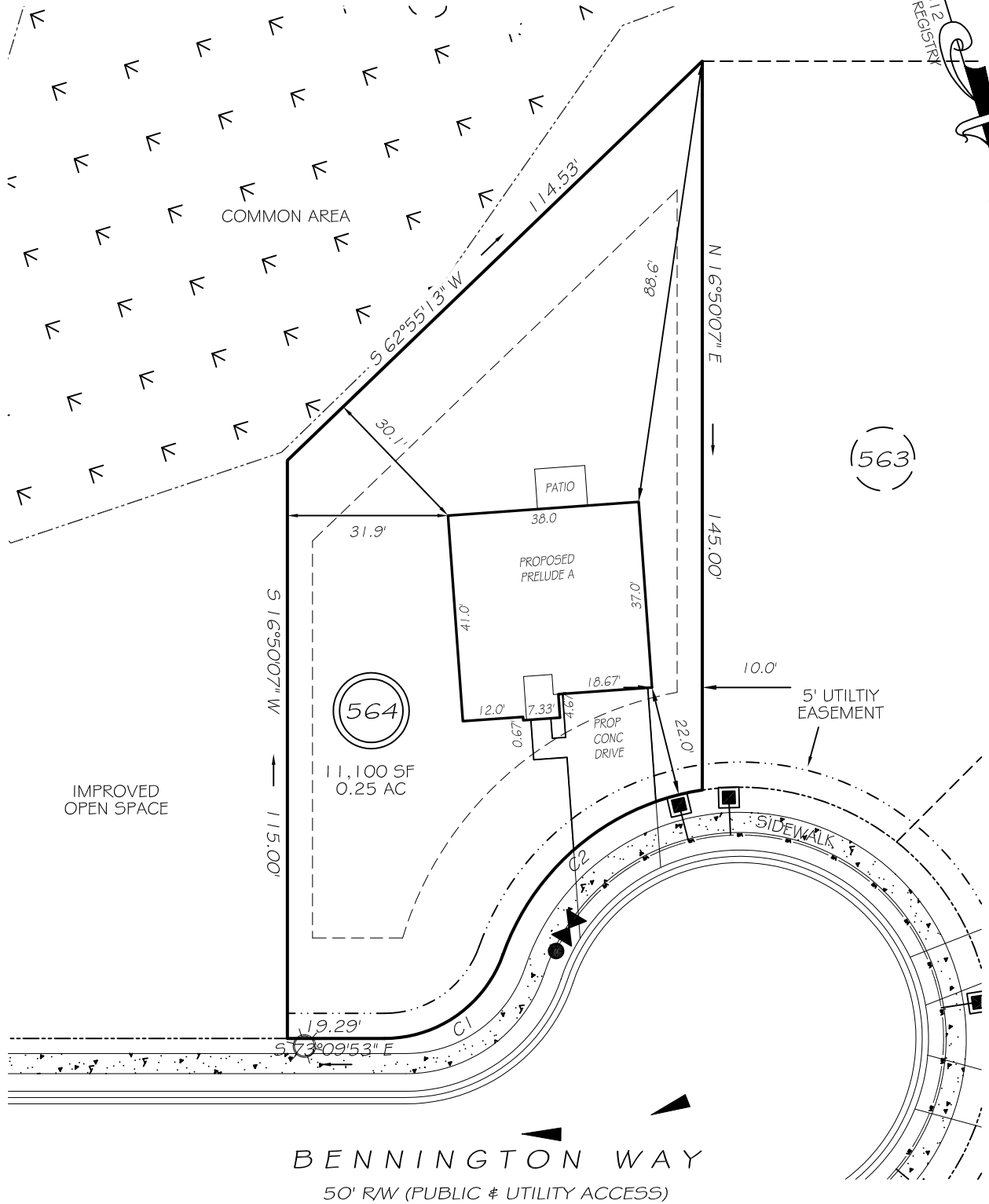


I, MICHAEL P. GRIFFIN, certify that under my direction and supervision this map was drawn from an actual field survey; that the error of closure of the survey as calculated by coordinates is 1: 10,000+; that the area shown hereon was calculated by coordinates. Dashed lines shown hereon were not surveyed.

Witness my hand and seal this day of MONTH 2024.

BK 2024 PG 512  
HARNETT CO. REGISTRY

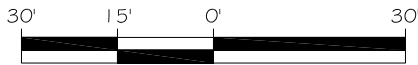


IMPERVIOUS AREAS

HOUSE	1488 SQ. FT.
DRIVE & WALKS	489 SQ. FT.
PATIO	80 SQ. FT.
<b>TOTAL</b>	<b>2057 SQ. FT.</b>
ALLOWED	3000 SQ. FT.

C1 R=25.00' L=30.77' S71°34'15"W 28.87'  
C2 R=50.00' L=54.02' N67°15'29"E 51.43'

REVISION: ROTATE 10/22/24

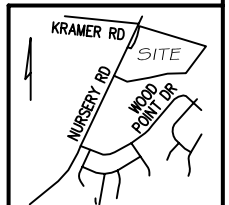


GRAPHIC SCALE  
1"=30'

ZONING: RA-20R  
SETBACKS  
FRONT 20'  
CORNER SIDE 20'  
REAR 15'  
SIDE 5'

LEGEND

EIP	EXISTING IRON PIPE	FES	FLARED END SECTION
RBS	REBAR SET	WM	WATER METER
R/W	RIGHT OF WAY	CO	CLEAN OUT
N/F	NOW OR FORMERLY	FH	FIRE HYDRANT
EIS	EXISTING IRON STAKE	CB	CATCH BASIN



**P R E L I M I N A R Y**  
NOT FOR RECORDATION,  
SALES OR CONVEYANCE



GRIFFIN LAND SURVEYING, INC.

P. O. BOX 148  
FUQUAY-VARINA, NC 27526  
(919) - 567 - 1963

FIRM LIC.# C-1345

PLOT PLAN  
FOR

**DREAM FINDERS HOMES LLC**

CREEKSIDE OAKS  
NORTH SUBDIVISION  
LOT 564

BENNINGTON WAY  
LILLINGTON, N.C.

HARNETT COUNTY ANDERSON CREEK TOWNSHIP

DRAWN BY **KDF**

DATE **10/3/24**

CHECKED BY **MPG**

SCALE **1" = 30'**