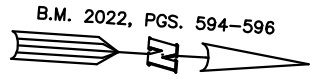


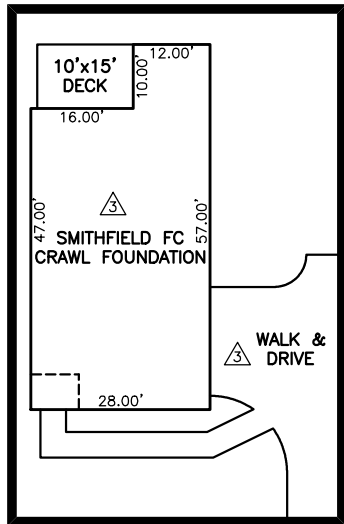
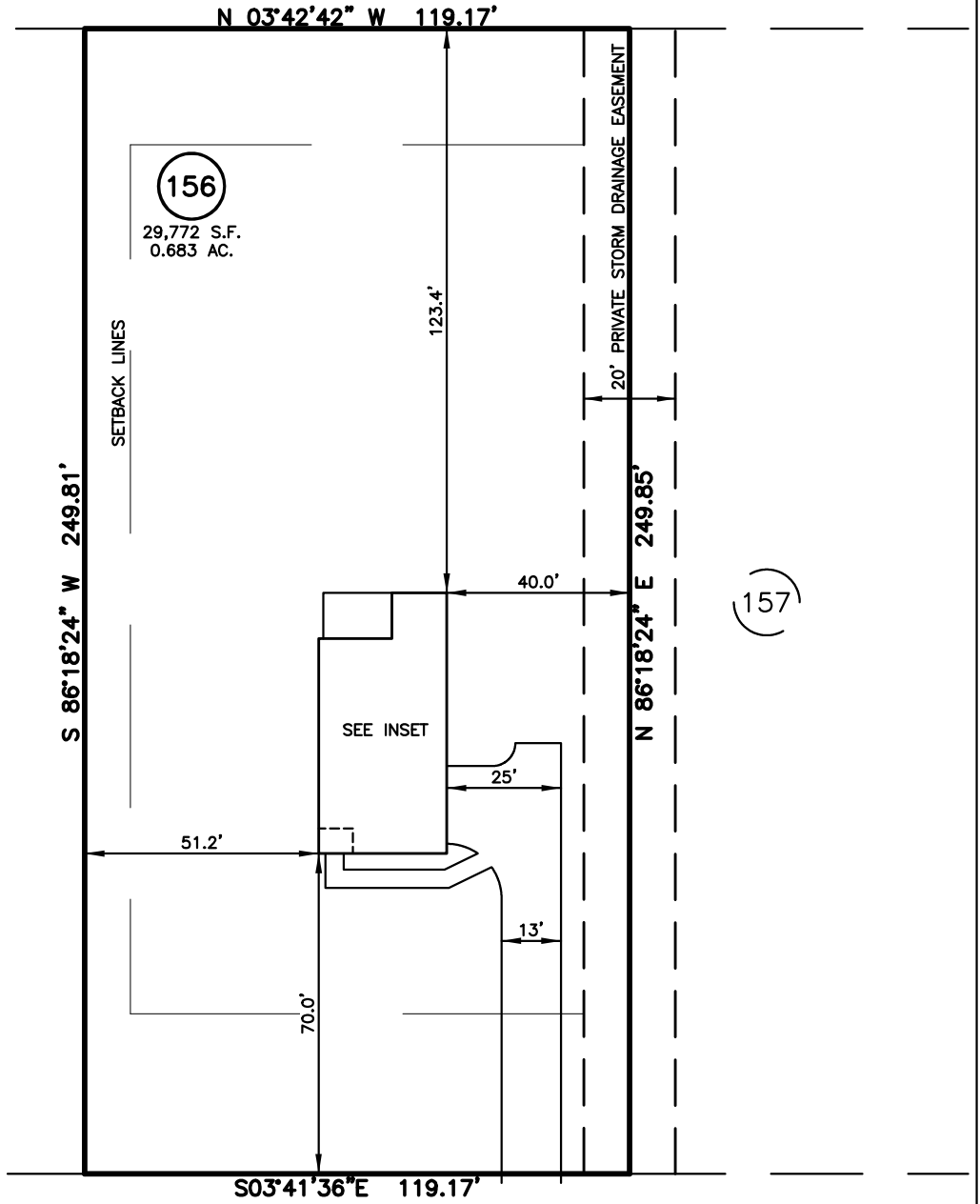
SITE PLAN FOR
NEW HOME, INC.
 452 DUNCAN CREEK ROAD
 LOT 156, DUNCAN'S CREEK, PHASE 1
 UPPER LITTLE CREEK TOWNSHIP, HARNETT COUNTY, NORTH CAROLINA

N\F
 JOSHUA E. & TERESA A. BRITTON
 D.B. 1479, PG. 124
 P.B. 2017, PG. 57



LEGEND

- ⊠ AIR CONDITIONER
- ⊡ BACK of CURB
- ⊞ BACK FLOW PREVENTER
- CLEANOUT
- ⊞ CURB INLET
- DHS DRILL HOLE SET
- ECM EXISTING CONCRETE MONUMENT
- EDH EXISTING DRILL HOLE
- EIS EXISTING IRON STAKE
- EIP EXISTING IRON PIPE
- EM ELECTRIC METER
- EPK EXISTING PK NAIL
- ES ELECTRIC STUB
- ⊞ FLARED END SECTION
- ⊞ FIRE HYDRANT
- ⊞ FIBER OPTIC PEDESTAL
- ⊞ GAS METER
- ⊞ GUY
- INV. INVERT
- IPS IRON PIPE SET
- IRS IRON ROD SET
- LIGHT POLE
- MNS MAGNETIC NAIL SET
- ⊞ MANHOLE SANITARY SEWER
- ⊞ MANHOLE STORM SEWER
- OHW OVERHEAD WIRES
- PKS PK NAIL SET
- PNS POINT NOT SET
- RRS RAIL ROAD SPIKE
- ⊞ TELEPHONE PEDESTAL
- ⊞ TRANSFORMER
- ⊞ CABLE TV PEDESTAL
- ⊞ UTILITY POLE
- ⊞ WATER METER
- ⊞ WATER VALVE
- ⊞ YARD INLET
- ⊞ FIELD MEASUREMENT
- ⊞ REVISION TRIANGLE



INSET SCALE: 1"=30'

| IMPERVIOUS SURFACES | S.F. |
|---------------------|-------|
| HOUSE | 1,440 |
| WALK & DRIVE | 1,610 |
| PORCH | 150 |
| TOTAL | 3,200 |

DUNCAN CREEK ROAD
 50' PUBLIC R/W

SETBACK INFO

FRONT: 35'
 REAR: 25'
 SIDES: 10'
 CORNER SIDE: 20'

REFERENCES:

B.M. 2022, PGS. 594-596



SCALE: 1" = 40'

THIS IS A SITE PLAN AS DEFINED BY G.S. 160D-102 AND IS NOT INTENDED TO BE ATTACHED TO ANY INSTRUMENT RECORDED IN THE REGISTER OF DEEDS OFFICE.

⊞ NEW SITE PLAN WITH SIDE LOAD

SITE PLAN
 NOT FOR RECORDATION,
 CONVEYANCE OR SALES

REV CODE: 1.FLIP, 2.PLAN, 3.ROTATE, 4.MOVE, 5.SS
 6.SEVERAL OF ABOVE, 7.LAND FEATURE, 8. OTHER

REV3: DEC. 16, 2024(2)
 REV2: OCT. 16, 2024(4)
 REV1: OCT. 04, 2024(4)
 DATE: OCT. 01, 2024

F.B. _____

RWK, PA
ENGINEERING ~ SURVEYING
 CORPORATE LICENSE: C-1771
 101 W. MAIN ST., SUITE 202
 GARNER, NC 27529
 PHONE (919) 779-4854
 FAX (919) 779-4056