



**North Carolina Onsite Wastewater Contractor Inspector Certification Board
Authorized Onsite Wastewater Evaluator Permit Option for Non-Engineered Systems
Notice of Intent (NOI) to Construct**

New Expansion Repair Relocation Relocation of Repair Area

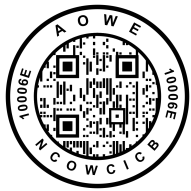
Owner or Legal Representative Information:
 Name: D.R. Horton Inc.
 Mailing address: 2000 Aerial Center Parkway, Suite 110A City: Morrisville State: N Zip: 2756
 Phone: 919.760.9668 Email: mrlee@drhorton.com

Authorized Onsite Wastewater Evaluator Information:
 Name: Thomas Boyce, LSS, AOWE Certification #: 10006E
 Mailing address: PO Box 865 City: West End State: N Zip: 2737
 Phone: (910)295-1899 Email: info@owpnc.com

Site Location Information:
 Site address: Lot 6- Masons Ridge -TBD Nursery Rd Spring Lake , NC 28390
 Tax parcel identification number or subdivision lot, block number of property: Part of 0505-15-3556
 County: Harnett

System Information:
 Wastewater System Type: III(g)- Accepted
 Daily Design Flow: 480
 Sapolite System: Yes No Subsurface Operator Required: Yes No
 Water Supply Type: Private Well Public Water Supply Spring Other: _____

Facility Type:
 Residential 4 # Bedrooms 8 Maximum # of Occupants
 _____ Business Type of Business and Basis for Flow: _____
 _____ Public Assembly Type of Public Assembly and Basis for Flow: _____



Required Attachments:
 Plat or Site Plan
 Evaluation of Soil and Site Features by Licensed Soil Scientist

Attest: On this the 16 day of October, 2023 by signature below I hereby attest that the information required to be included with this NOI to Construct is accurate and complete to the best of my knowledge. Furthermore, I hereby attest that I have adhered to the laws and rules governing onsite wastewater systems in the state of North Carolina.
 This NOI shall expire on 16 day of October, 2028.

Signature of Authorized Onsite Wastewater Evaluator: Thomas J. Boyce
 Signature of Owner or Legal Representative: Robert C. Stuart

Disclosure: The owner may apply for a building permit for the project upon submitting a complete NOI to Construct and the fee required (if any) to the local health department. An onsite wastewater system authorized by an authorized onsite wastewater evaluator shall be transferable to a new owner with the consent of the authorized onsite wastewater evaluator.

Local Health Department Receipt Acknowledgement:
 Signature of Local Health Department Representative: _____ Date: _____



AOWE/SL2022-11 Permit Requirements

- Pre-construction conference with septic contractor required before beginning installation.
- It is the responsibility of the contractor to contact the AOWE prior to installation.
- Systems shall not be installed in wet conditions or the permit will be revoked.
- Any changes to the proposed plans must be approved by the AOWE.
- The client/owner is responsible for marking any property lines and corners.
- Do not allow any traffic, construction, excavation, utilities, material storage, or any other disturbance to take place on the designated septic area or repair area. These activities may void your permit.
- The contractor is responsible for ensuring that the septic system is installed in the proper location and that all setbacks are met. See NCAC 18A . 1950 for setback requirements. The contractor is responsible for ensuring that the septic system is installed in accordance with local rules in counties where this is applicable.
- The system installation must be inspected by the local health department at certain stages during the installation.
- For systems with pumps, the contractor is responsible for the proper installation of the electrical components. An electrical permit must be obtained and a person with a valid NC Electrical license must provide electrical service to the pump controller and alarm.
- This permit shall become invalid and/or may be revoked if the site is altered. There shall be no grading, cutting, logging or other soil disturbance in the septic area. Design does not guarantee functionality or future performance.
- The contractor is responsible for backfilling the system components so that no areas are subject to the retention or ponding of surface water. After the installation is completed, some settling of the backfill material may take place. The system owner is responsible for eliminating settled or sunken areas, stabilization, and final landscaping of the ground surface. No heavy equipment or vehicular traffic over the leach field.
- Installer to re-establish field layout prior to pre-construction conference for initial and repair systems as applicable.
- Tanks must be leak tested by the manufacturer.
- Installer must be certified by NCOWCICB at appropriate grade level for system.
- Installer must carry adequate general liability insurance.

Additional Requirements:

Maintenance Requirements:

System should be maintained in accordance with NCAC 18A .1961 -
The contents shall be pumped whenever the solids level is found to be more than 1/3 of the liquid depth in any compartment.

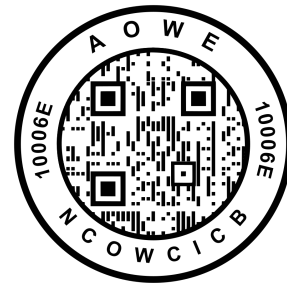
Owner/Client Acknowledgement of Permit Requirements

Robert C. Stuart

Owner Signature

03 / 08 / 2024

Date



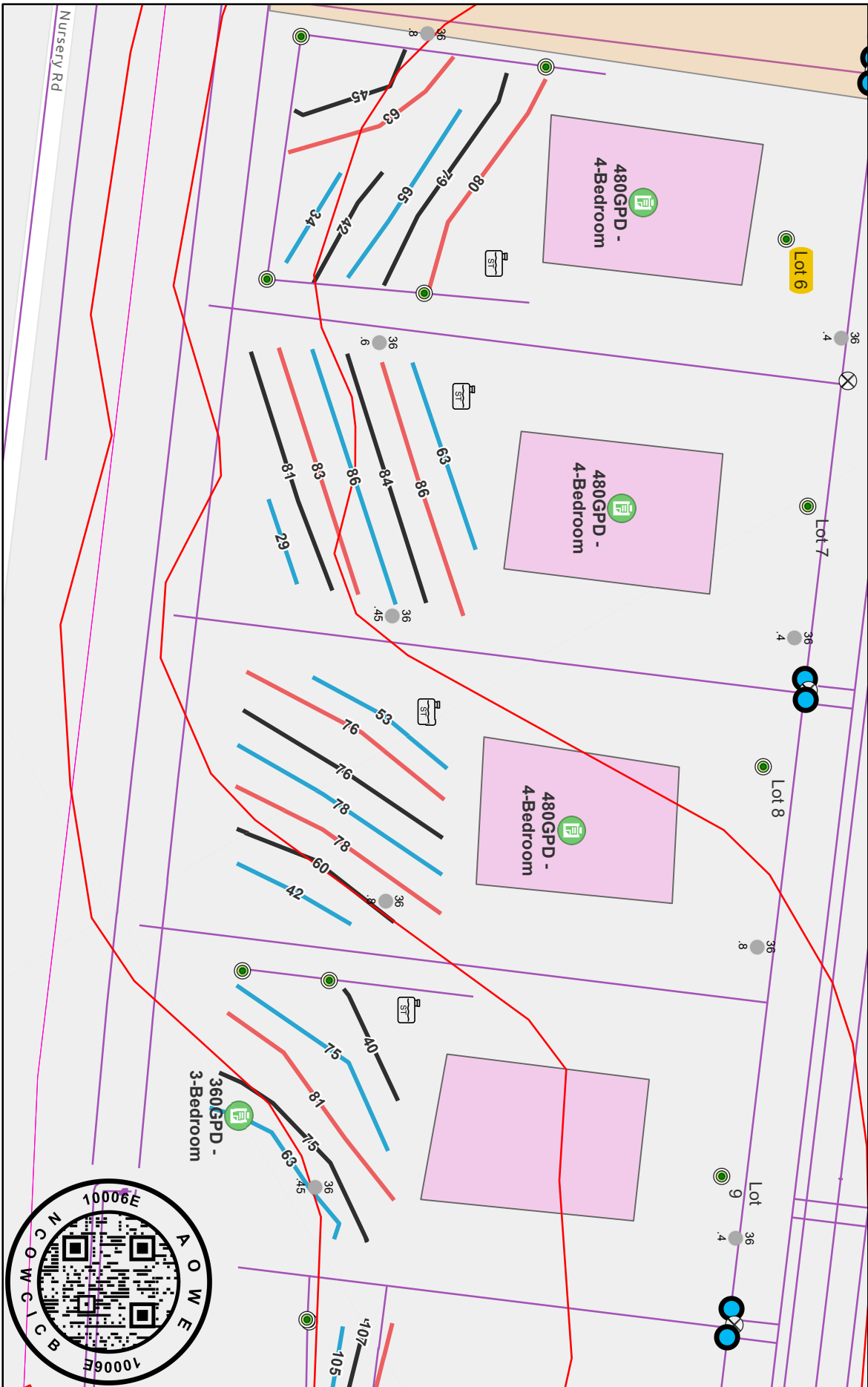


Lot 6- TBD Nursery Rd

Long	-78.98856816663870	-78.98835416637850
Lat	35.27803366665090	35.277616833604100
Boring_Typ	Conv	Conv
Depth_of_U	36	36
LTAR	0.4	0.8
Slope	2	6
Notes	0-18 SL 18-36+ SCL	0-36+ LS
Septic_Tank_Capacity	1,000 Gallon	
Pump_Tank_Capacity	1,000 Gallon(If Needed)	
Initial_System_Type	Accepted	
Line_Length_Initial	240	
Max_Depth_Initial	24	
Repair_System_Type	Accepted	
Line_Length_Repair	160	
Max_Depth_Repair	24	
Distribution_Method	Parallel or Serial	
Initial_LTAR	0.5	
Repair_LTAR	0.5	
GPD	480GPD - 4-Bedroom	

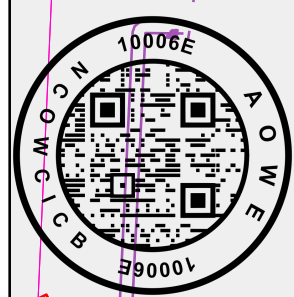
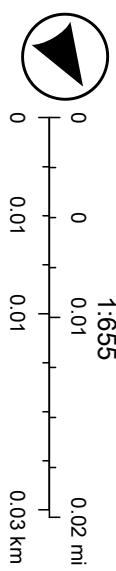


Lot 6 - TBD Nursery Rd



10/16/2023

- 2021 Field Data - Borings - PEA, Borings
- Other
- Contours: 2 Interval - BaseContourZfeet
- North Carolina Parcels (Polygons) - Parcels
- PSC - Points
- ELP
- Septic Tank
- Point Generic
- Water Meter
- House Box
- Repair Area
- Other
- Leach Lines
- Red
- White
- Blue
- Mason's Ridge





REVISIONS:

8.25.21	REV 58	NUMBER
---------	--------	--------

FOR AGENCY REVIEW 9-2-2021

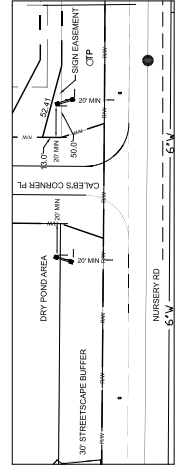
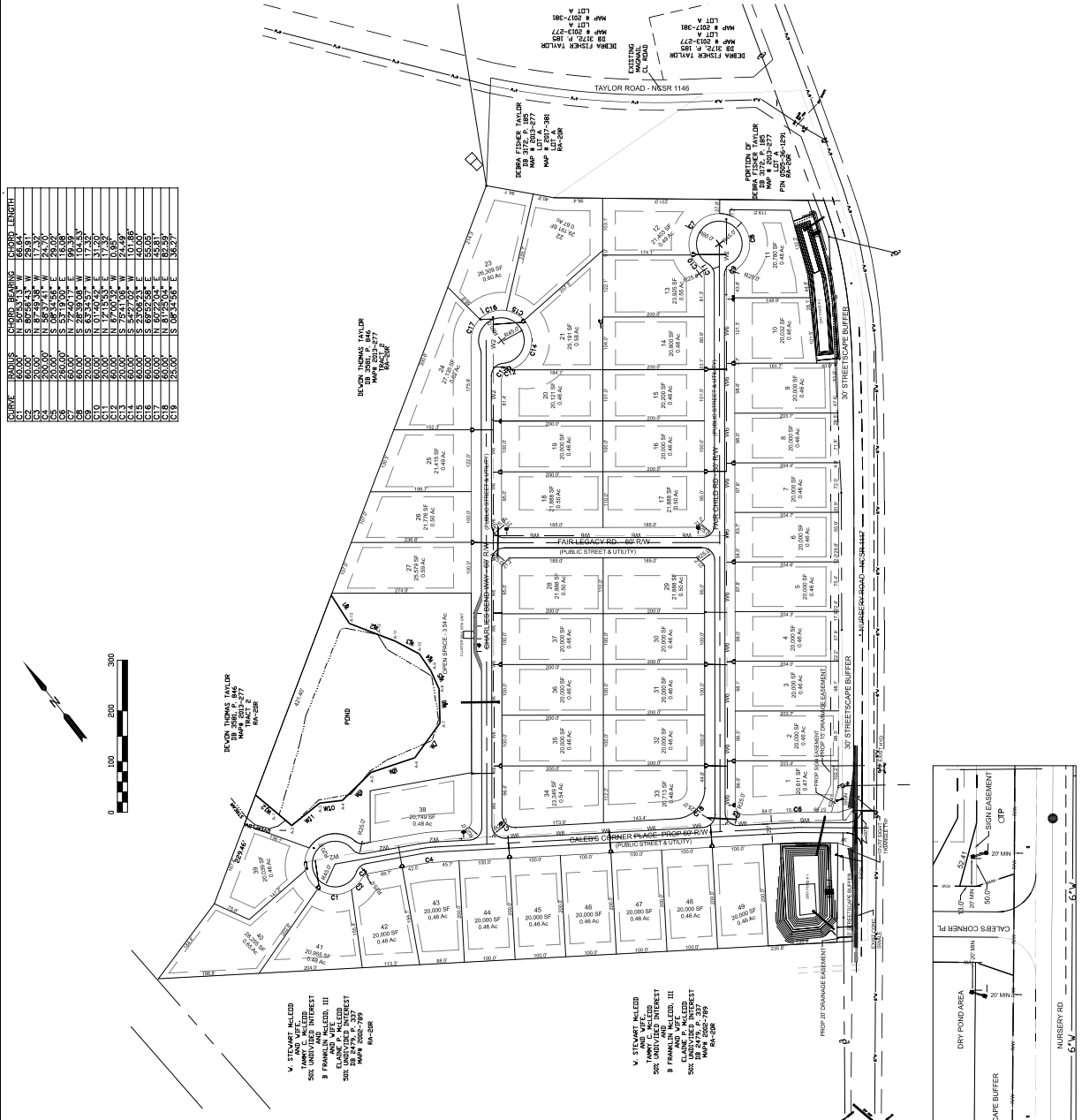
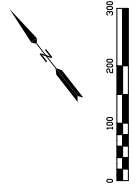
APPROVAL OF THIS PLAT/PLAN DOES NOT GUARANTEE WATER CAPACITY OR WASTEWATER CAPACITY OF THE DEVELOPMENT. THE HOMEOWNER IS RESPONSIBLE FOR OBTAINING NECESSARY PERMITS AND APPROVALS. THIS DEVELOPMENT MAY REQUIRE ADDITIONAL IMPROVEMENTS TO THE EXISTING WATER AND WASTEWATER SYSTEM TO MEET FUTURE WATER AND WASTEWATER DEMANDS. THE HOMEOWNER IS RESPONSIBLE FOR OBTAINING NECESSARY PERMITS AND APPROVALS. APPROVAL OF THIS PLAT/PLAN DOES NOT GUARANTEE CONSTRUCTION PLAN AND/OR FINAL PLAT APPROVAL.

THIS DEVELOPMENT IS WITHIN ONE MILE OF A VOLUNTARY AGRICULTURAL DISTRICT.

THE HOME OWNERS' ASSOCIATION WILL BE RESPONSIBLE FOR MAINTENANCE OF THE MAIL KIOSK, OPEN SPACES, ALL LANDSCAPE BUFFERING, AND DRAINAGE EASEMENTS.

MAXIMUM IMPERVIOUS AREA PER LOT = 5000 SQ-FT

GRID	ROW	COLUMN	BEARING	LENGTH
C1	S	1	S 89°54'31" W	28.51
C1	S	2	S 89°54'31" W	28.51
C1	S	3	S 89°54'31" W	28.51
C1	S	4	S 89°54'31" W	28.51
C1	S	5	S 89°54'31" W	28.51
C1	S	6	S 89°54'31" W	28.51
C1	S	7	S 89°54'31" W	28.51
C1	S	8	S 89°54'31" W	28.51
C1	S	9	S 89°54'31" W	28.51
C1	S	10	S 89°54'31" W	28.51
C1	S	11	S 89°54'31" W	28.51
C1	S	12	S 89°54'31" W	28.51
C1	S	13	S 89°54'31" W	28.51
C1	S	14	S 89°54'31" W	28.51
C1	S	15	S 89°54'31" W	28.51
C1	S	16	S 89°54'31" W	28.51
C1	S	17	S 89°54'31" W	28.51
C1	S	18	S 89°54'31" W	28.51
C1	S	19	S 89°54'31" W	28.51
C1	S	20	S 89°54'31" W	28.51
C1	S	21	S 89°54'31" W	28.51
C1	S	22	S 89°54'31" W	28.51
C1	S	23	S 89°54'31" W	28.51
C1	S	24	S 89°54'31" W	28.51
C1	S	25	S 89°54'31" W	28.51
C1	S	26	S 89°54'31" W	28.51
C1	S	27	S 89°54'31" W	28.51
C1	S	28	S 89°54'31" W	28.51
C1	S	29	S 89°54'31" W	28.51
C1	S	30	S 89°54'31" W	28.51
C1	S	31	S 89°54'31" W	28.51
C1	S	32	S 89°54'31" W	28.51
C1	S	33	S 89°54'31" W	28.51
C1	S	34	S 89°54'31" W	28.51
C1	S	35	S 89°54'31" W	28.51
C1	S	36	S 89°54'31" W	28.51
C1	S	37	S 89°54'31" W	28.51
C1	S	38	S 89°54'31" W	28.51
C1	S	39	S 89°54'31" W	28.51
C1	S	40	S 89°54'31" W	28.51
C1	S	41	S 89°54'31" W	28.51
C1	S	42	S 89°54'31" W	28.51
C1	S	43	S 89°54'31" W	28.51
C1	S	44	S 89°54'31" W	28.51
C1	S	45	S 89°54'31" W	28.51
C1	S	46	S 89°54'31" W	28.51
C1	S	47	S 89°54'31" W	28.51
C1	S	48	S 89°54'31" W	28.51
C1	S	49	S 89°54'31" W	28.51
C1	S	50	S 89°54'31" W	28.51
C1	S	51	S 89°54'31" W	28.51
C1	S	52	S 89°54'31" W	28.51
C1	S	53	S 89°54'31" W	28.51
C1	S	54	S 89°54'31" W	28.51
C1	S	55	S 89°54'31" W	28.51
C1	S	56	S 89°54'31" W	28.51
C1	S	57	S 89°54'31" W	28.51
C1	S	58	S 89°54'31" W	28.51
C1	S	59	S 89°54'31" W	28.51
C1	S	60	S 89°54'31" W	28.51
C1	S	61	S 89°54'31" W	28.51
C1	S	62	S 89°54'31" W	28.51
C1	S	63	S 89°54'31" W	28.51
C1	S	64	S 89°54'31" W	28.51
C1	S	65	S 89°54'31" W	28.51
C1	S	66	S 89°54'31" W	28.51
C1	S	67	S 89°54'31" W	28.51
C1	S	68	S 89°54'31" W	28.51
C1	S	69	S 89°54'31" W	28.51
C1	S	70	S 89°54'31" W	28.51
C1	S	71	S 89°54'31" W	28.51
C1	S	72	S 89°54'31" W	28.51
C1	S	73	S 89°54'31" W	28.51
C1	S	74	S 89°54'31" W	28.51
C1	S	75	S 89°54'31" W	28.51
C1	S	76	S 89°54'31" W	28.51
C1	S	77	S 89°54'31" W	28.51
C1	S	78	S 89°54'31" W	28.51
C1	S	79	S 89°54'31" W	28.51
C1	S	80	S 89°54'31" W	28.51
C1	S	81	S 89°54'31" W	28.51
C1	S	82	S 89°54'31" W	28.51
C1	S	83	S 89°54'31" W	28.51
C1	S	84	S 89°54'31" W	28.51
C1	S	85	S 89°54'31" W	28.51
C1	S	86	S 89°54'31" W	28.51
C1	S	87	S 89°54'31" W	28.51
C1	S	88	S 89°54'31" W	28.51
C1	S	89	S 89°54'31" W	28.51
C1	S	90	S 89°54'31" W	28.51
C1	S	91	S 89°54'31" W	28.51
C1	S	92	S 89°54'31" W	28.51
C1	S	93	S 89°54'31" W	28.51
C1	S	94	S 89°54'31" W	28.51
C1	S	95	S 89°54'31" W	28.51
C1	S	96	S 89°54'31" W	28.51
C1	S	97	S 89°54'31" W	28.51
C1	S	98	S 89°54'31" W	28.51
C1	S	99	S 89°54'31" W	28.51
C1	S	100	S 89°54'31" W	28.51



Signature Certificate

Reference number: RXHCW-279LJ-JWEHN-D6470

Signer

Email: rcstuart@drhorton.com

Sent:

Viewed:

Signed:

Timestamp

07 Mar 2024 20:46:42 UTC

08 Mar 2024 14:13:15 UTC

08 Mar 2024 14:47:54 UTC

Signature



Recipient Verification:

✓Email verified

08 Mar 2024 14:13:15 UTC

IP address: 66.57.238.178

Location: Morrisville, United States

Document completed by all parties on:

08 Mar 2024 14:47:54 UTC

Page 1 of 1



Signed with PandaDoc

PandaDoc is a document workflow and certified eSignature solution trusted by 50,000+ companies worldwide.

