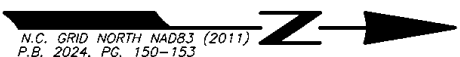
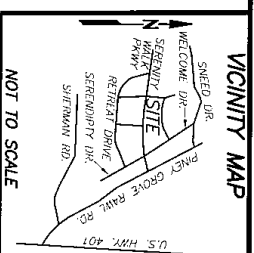


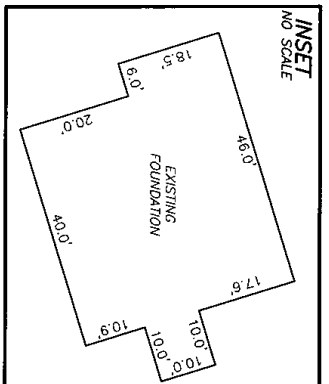
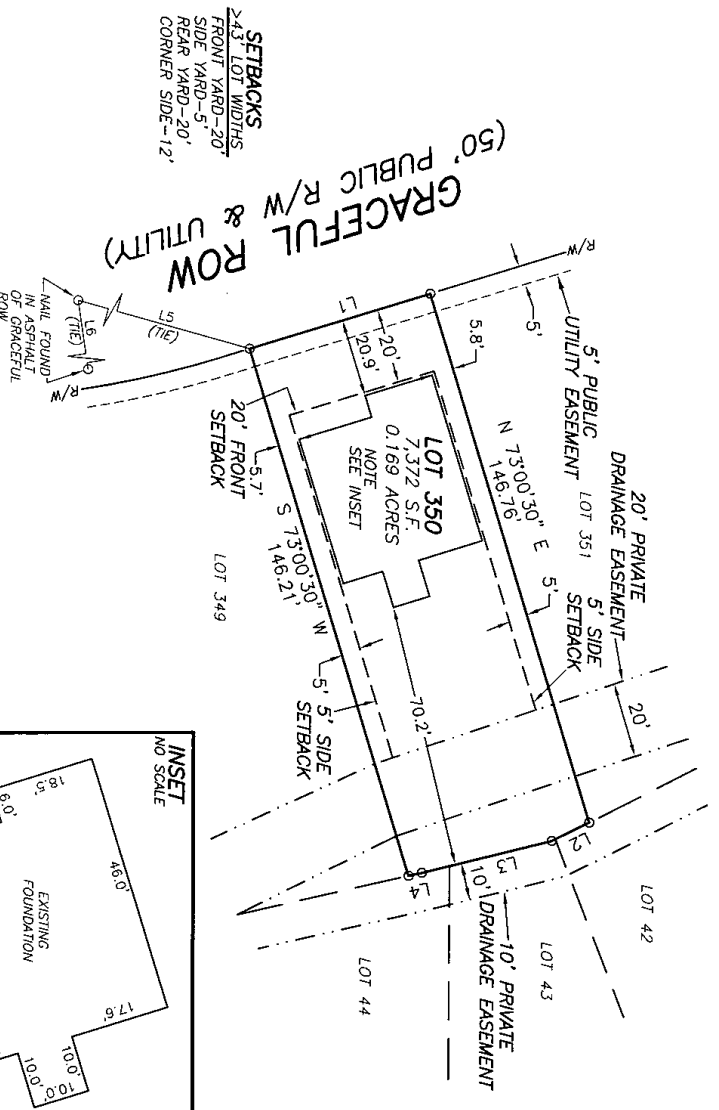
LINE TABLE		
LINE	BEARING	DISTANCE
L1	N 16°59'30" W	50.00'
L2	S 26°07'47" E	11.01'
L3	S 13°42'31" E	35.62'
L4	S 12°48'46" E	3.58'
L5	S 15°52'52" W	113.73'
L6	N 81°36'21" E	37.01'



NOT TO SCALE

REFERENCES:  
 1. D.B. 4232 PG. 647  
 P.M. 0485-13-7789.000  
 P.D. 08065503 0032 05

NOTICE OF DEVELOPMENT GUIDELINES:  
 2. D.B. 4149, PG. 210  
 RESTRICTIVE COVENANTS:  
 3. D.B. 4109, PG. 612

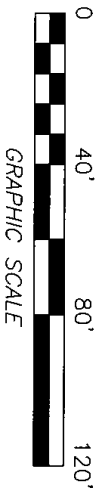


**SETBACKS**  
 >43' LOT WIDTHS  
 FRONT YARD-20'  
 SIDE YARD-5'  
 REAR YARD-20'  
 CORNER SIDE-12'

- NOTES:
1. ALL EASEMENTS, RIGHTS OF WAY AND BOUNDARY INFORMATION TAKEN FROM P.B. 2024, PG. 146-149 UNLESS OTHERWISE NOTED.
  2. PROPERTY IS SUBJECT TO ALL EASEMENTS AND RESTRICTION OF RECORD. NO TITLE EXAMINATION HAS BEEN DONE BY ROBINSON & PLANTE, P.C.

NOTE:  
 RATIO OF PRECISION IS 1:110,000+. MISCLOSURE WAS DISTRIBUTED BY THE COMPASS METHOD. THE DISTANCES ON THIS MAP ARE ADJUSTED HORIZONTAL GROUND UNLESS NOTED OTHERWISE. ALL AREAS ARE CALCULATED BY COORDINATE COMPUTATION.

**LOT 350 SERENITY SUBDIVISION**  
**PHASE 2A**  
**40 GRACEFUL ROW**  
**HARNETT COUNTY**  
**FUQUAY-VARINA, N.C. 27526**

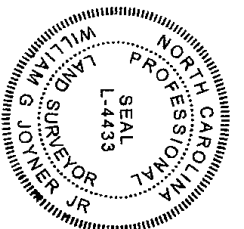


REFERENCE: PLAT BOOK 2024 PAGE 150-153.

FILE: S7L0T530FD

I CERTIFY THAT THIS MAP WAS DRAWN, UNDER MY SUPERVISION FROM AN ACTUAL SURVEY MADE UNDER MY SUPERVISION. DESCRIPTION RECORDED IN REFERENCE IS SHOWN. THAT THE BOUNDARIES AND SURVEYED AREAS INDICATED AS DRAWN FROM INFORMATION IN PRECISION IS 1:110,000. AND THAT THIS MAP MEET THE REQUIREMENTS OF THE STANDARDS OF PRACTICE FOR LAND SURVEYING IN NORTH CAROLINA (21 N.C.A.C. 56.1600). THIS 17TH DAY OF DECEMBER, 2024.

*William G. Joyner Jr.*  
 PROFESSIONAL LAND SURVEYOR L-4433



**ROBINSON & PLANTE PC**  
 LAND SURVEYING  
 C-2687  
 970 TRINITY ROAD  
 RALEIGH, N.C. 27607  
 PHONE (919) 859-6030  
 FAX (919) 859-6032

DATE: 12-16-24 SCALE: 1"=40'