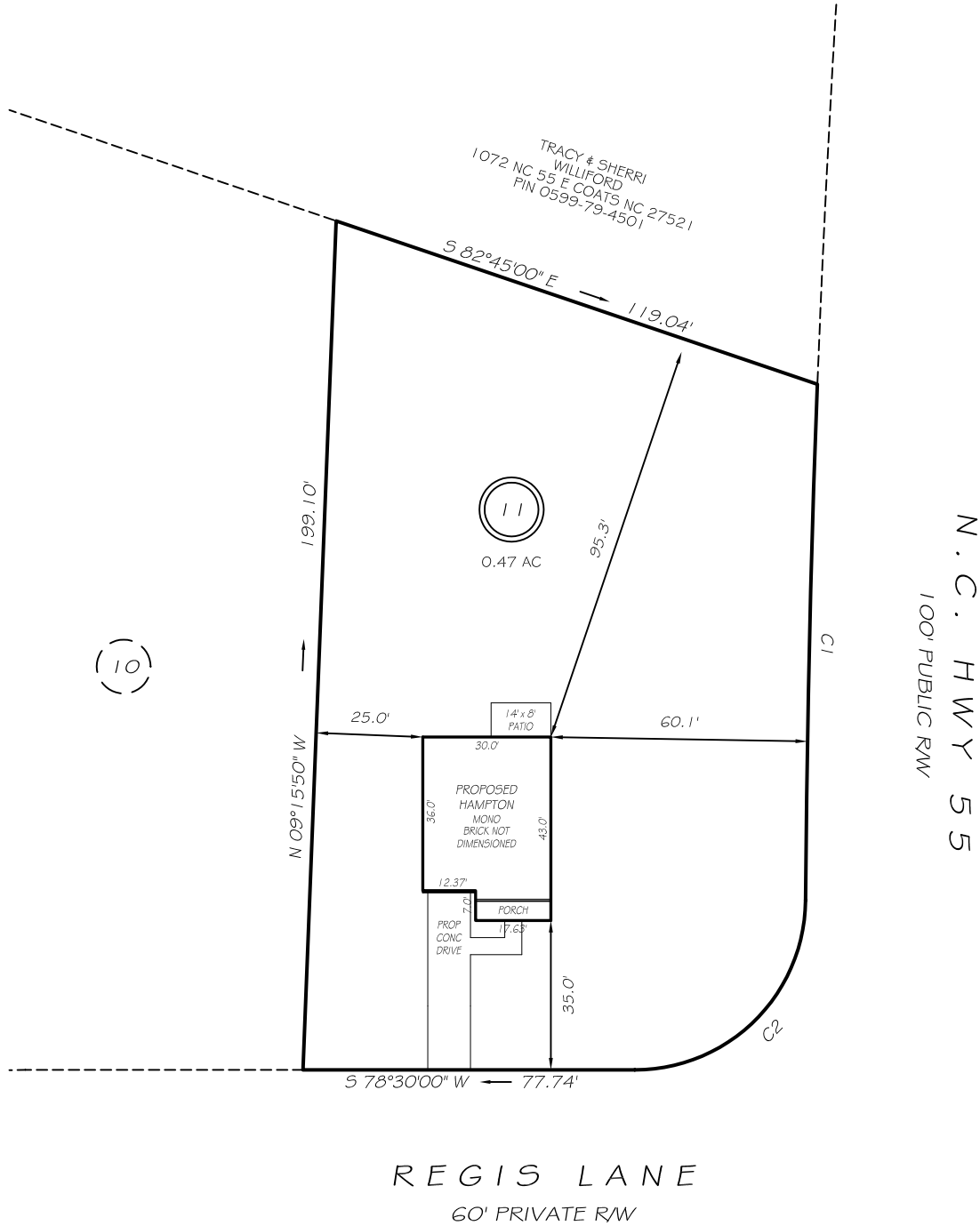
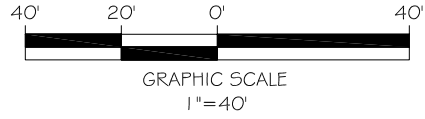


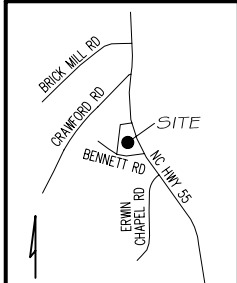
I, MICHAEL P. GRIFFIN, certify that under my direction and supervision this map was drawn from an actual field survey, that the error of closure of the survey as calculated by coordinates is 1: 10,000+; that the area shown hereon was calculated by coordinates. Dashed lines shown hereon were not surveyed.

Witness my hand and seal this day of MONTH 2024.



C1 R=3965.00' L=121.01' S10°11'31"E 121.00'
C2 R=40.00' L=62.531' S33°41'47"W 56.36'

SETBACKS TO BE VERIFIED WITH HARNETT COUNTY



LEGEND

P R E L I M I N A R Y
NOT FOR RECORDATION,
SALES OR CONVEYANCE

EIP	EXISTING IRON PIPE	FES	FLARED END SECTION
ISS	IRON STAKE SET	WM	WATER METER
RAW	RIGHT OF WAY	CO	CLEAN OUT
N/F	NOW OR FORMERLY	FH	FIRE HYDRANT
EIS	EXISTING IRON STAKE	CB	CATCH BASIN



GRIFFIN LAND SURVEYING, INC.

P. O. BOX 148
FUQUAY-VARINA, NC 27526
(919) - 567 - 1963

FIRM LIC.# C-1345

PLOT PLAN FOR

A & G RESIDENTIAL

TURLINGTON LAND SUBDIVISION

LOT 11

REGIS LANE

COATS, N.C.

HARNETT COUNTY GROVE TOWNSHIP

DRAWN BY KDF

DATE 10/9/24

CHECKED BY MPG

SCALE 1" = 40'