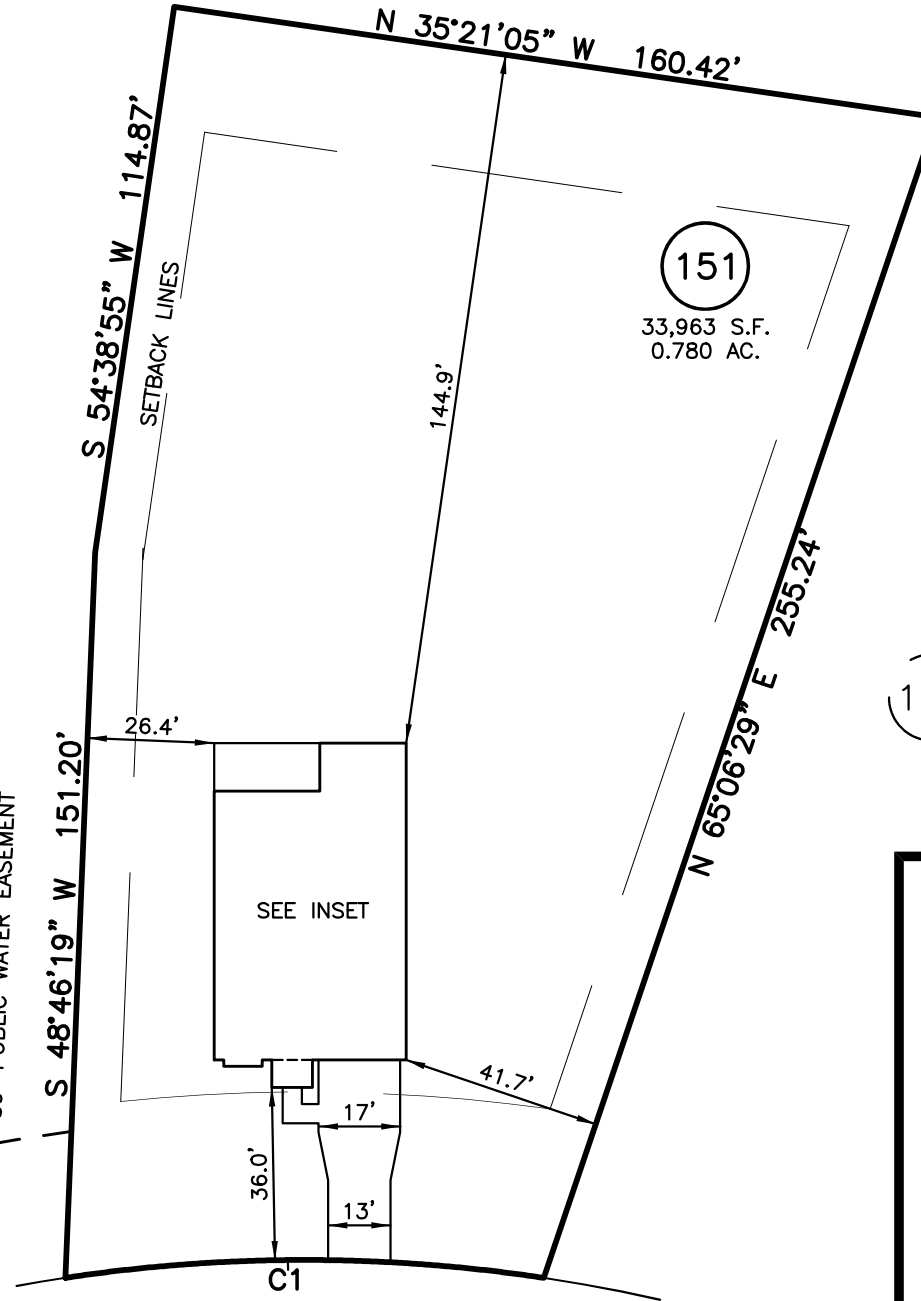
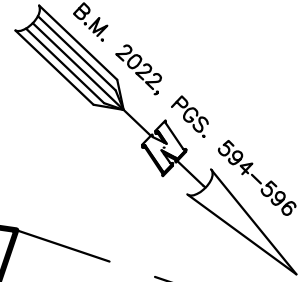


PLOT PLAN FOR
NEW HOME, INC.
 544 DUNCAN CREEK ROAD
 LOT 151, DUNCAN'S CREEK, PHASE 1
 UPPER LITTLE CREEK TOWNSHIP, HARNETT COUNTY, NORTH CAROLINA

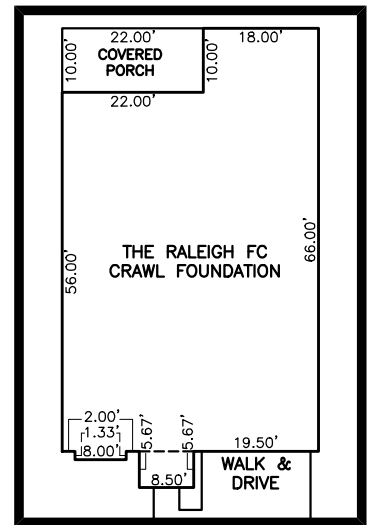
OPEN SPACE



LEGEND

- ⊠ AIR CONDITIONER
- BC BACK OF CURB
- BFP BACK FLOW PREVENTER
- CLEANOUT
- ⊠ CURB INLET
- DHS DRILL HOLE SET
- EDM EXISTING CONCRETE MONUMENT
- EDH EXISTING DRILL HOLE
- EIS EXISTING IRON STAKE
- EIP EXISTING IRON PIPE
- EM ELECTRIC METER
- EPK EXISTING PK NAIL
- ES ELECTRIC STUB
- ⊠ FLARED END SECTION
- ⊠ FIRE HYDRANT
- ⊠ FIBER OPTIC PEDESTAL
- ⊠ GAS METER
- ⊠ GUY
- INVERT
- IPS IRON PIPE SET
- IRS IRON ROD SET
- ⊠ LIGHT POLE
- MNS MAGNETIC NAIL SET
- ⊠ MANHOLE SANITARY SEWER
- ⊠ MANHOLE STORM SEWER
- OHV OVERHEAD WIRES
- PKS PK NAIL SET
- PNS POINT NOT SET
- RRS RAIL ROAD SPIKE
- ⊠ TELEPHONE PEDESTAL
- ⊠ TRANSFORMER
- ⊠ CABLE TV PEDESTAL
- ⊠ UTILITY POLE
- ⊠ WATER METER
- ⊠ WATER VALVE
- ⊠ YARD INLET
- ⊠ FIELD MEASUREMENT
- ⊠ REVISION TRIANGLE

152



INSET SCALE: 1"=30'

DUNCAN CREEK ROAD
 50' PUBLIC R/W

SETBACK INFO

FRONT: 35'
 REAR: 25'
 SIDES: 10'
 CORNER SIDE: 20'

REFERENCES:

B.M. 2022, PGS. 594-596



SCALE: 1" = 40'

IMPERVIOUS SURFACES	S.F.
HOUSE	2,480
WALK & DRIVE	670
PORCH	220
TOTAL	3,370

NUM	RADIUS	ARC	DELTA	CHORD BRG	CHORD
C1	335.00'	100.00'	17°06'15"	S 43°35'25" E	99.63'

NOTES

1. THIS SURVEY SUBJECT TO ANY FACTS THAT MAY BE DISCLOSED BY A FULL AND ACCURATE TITLE SEARCH.
2. THIS MAP MAY NOT BE A CERTIFIED SURVEY AND HAS NOT BEEN REVIEWED BY A LOCAL GOVERNMENT AGENCY FOR COMPLIANCE WITH ANY APPLICABLE LAND DEVELOPMENT REGULATIONS AND HAS NOT BEEN REVIEWED FOR COMPLIANCE WITH RECORDING REQUIREMENTS FOR PLATS.

PLOT PLAN
 PRELIMINARY PLAT- NOT FOR RECORDATION,
 CONVEYANCE OR SALES

REV CODE: 1.FLIP, 2.PLAN, 3.ROTATE, 4.MOVE, 5.SS
 6.SEVERAL OF ABOVE, 7.LAND FEATURE, 8. OTHER

REV1: OCT. 02, 2024(6)
 DATE: SEP. 09, 2024

F.B. _____

RWK, PA

ENGINEERING ~ SURVEYING

CORPORATE LICENSE: C-1771
 101 W. MAIN ST., SUITE 202
 GARNER, NC 27529
 PHONE (919) 779-4854
 FAX (919) 779-4056