

1st Floor			
Member Name	Results (Max UTIL %)	Current Solution	Comments
FC1: J3 (i195)	Passed (33% R)	1 piece(s) 11 7/8" TJI@ 210 @ 16" OC	
FC1: J5 (i234)	Passed (19% R)	1 piece(s) 11 7/8" TJI@ 210 @ 16" OC	

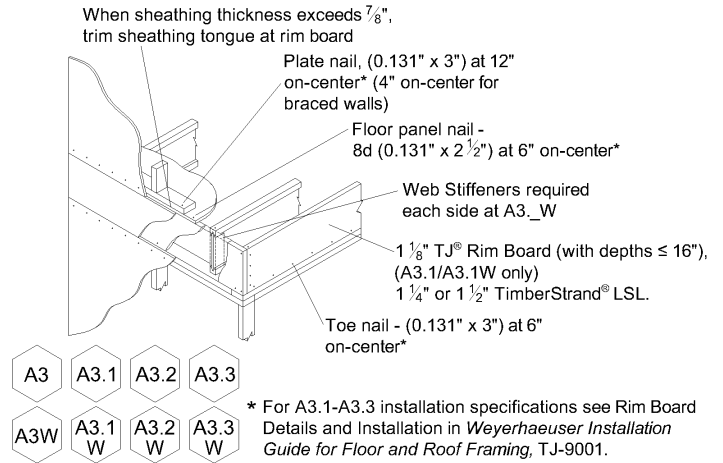
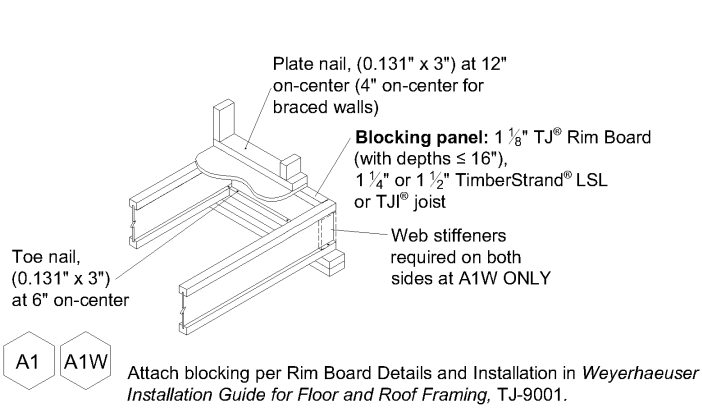
ForteWEB Software Operator	Job Notes
Dylan Vaughn UFPI (706) 367-2781 dylan.vaughn@ufpi.com	



3/20/2025 2:00:20 PM UTC

ForteWEB v3.9

File Name: DC 154 NOTCHES



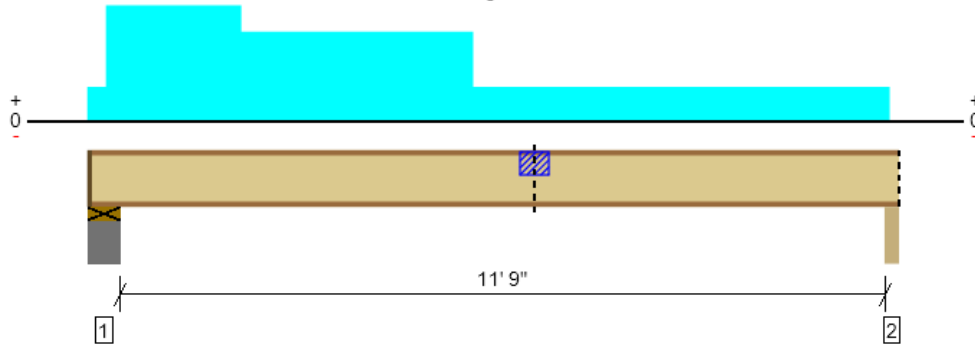
ForteWEB Software Operator	Job Notes
Dylan Vaughn UFPI (706) 367-2781 dylan.vaughn@ufpi.com	



1st Floor, FC1: J3 (i195)

1 piece(s) 11 7/8" TJI® 210 @ 16" OC

Overall Length: 12' 8 1/2"



Drawing is Conceptual. All locations are measured from the outside face of left support (or left cantilever end). All dimensions are horizontal (typ.).

Design Results	Actual @ Location	Allowed	Result	LDF	Load: Combination (Pattern)
Member Reaction (lbs)	487 @ 7"	1460 (3.50")	Passed (33%)	1.00	1.0 D + 1.0 L (All Spans)
Shear (lbs)	442 @ 8"	1655	Passed (27%)	1.00	1.0 D + 1.0 L (All Spans)
Moment (Ft-lbs)	1057 @ 5' 5 3/16"	3795	Passed (28%)	1.00	1.0 D + 1.0 L (All Spans)
Live Load Defl. (in)	0.040 @ 6' 6 1/2"	0.298	Passed (L/999+)	--	1.0 D + 1.0 L (All Spans)
Total Load Defl. (in)	0.086 @ 6' 1/2"	0.596	Passed (L/999+)	--	1.0 D + 1.0 L (All Spans)
TJ-Pro™ Rating	55	40	Passed	--	--

Member Length : 12' 7 3/8"  
System : Floor  
Member Type : Joist  
Building Use : Residential  
Building Code : IBC 2015  
Design Methodology : ASD

- Deflection criteria: LL (L/480) and TL (L/240).
- Allowed moment does not reflect the adjustment for the beam stability factor.
- A structural analysis of the deck has not been performed.
- Deflection analysis is based on composite action with a single layer of 23/32" Weyerhaeuser Edge™ Panel (24" Span Rating) that is glued and nailed down.
- Additional considerations for the TJ-Pro™ Rating include: None.

Supports	Bearing Length			Loads to Supports (lbs)				Accessories	Details
	Total	Available	Required	Dead	Floor Live	Roof Live	Factored		
1 - Plate on concrete - SPF	8.00"	6.88"	1.75"	315	174	26	490	1 1/8" Rim Board	A3
2 - Beam - SPF	3.50"	3.50"	1.75"	110	161	2	271	Blocking	A1

- Rim Board is assumed to carry all loads applied directly above it, bypassing the member being designed.
- Blocking Panels are assumed to carry no loads applied directly above them and the full load is applied to the member being designed.

Lateral Bracing	Bracing Intervals	Comments
Top Edge (Lu)	7' 3" o/c	
Bottom Edge (Lu)	12' 7" o/c	

- TJI joists are only analyzed using Maximum Allowable bracing solutions.
- Maximum allowable bracing intervals based on applied load.

Vertical Loads	Location	Spacing	Dead (0.90)	Floor Live (1.00)	Roof Live (1.15)	Comments
1 - Uniform (PLF)	0 to 12' 6 3/4"	N/A	6.7	26.7	--	Imported Load
2 - Uniform (PLF)	3 1/2" to 6' 1/2"	N/A	54.6	--	--	Imported Load
3 - Uniform (PLF)	3 1/2" to 2' 4 15/16"	N/A	13.1	--	13.1	Imported Load

Notch Type	Flange	Length	Depth	Location	Compression Moment (Ft-lbs)			Tension Moment (Ft-lbs)			Comments
					Actual	Allowed	Result	Actual	Allowed	Result	
Along Side	Top	1"	1"	7'	974	1956	Passed (50%)	0	1215	Passed (0%)	

- Notches are not allowed on adjacent joists.

ForteWEB Software Operator	Job Notes
Dylan Vaughn UFPI (706) 367-2781 dylan.vaughn@ufpi.com	

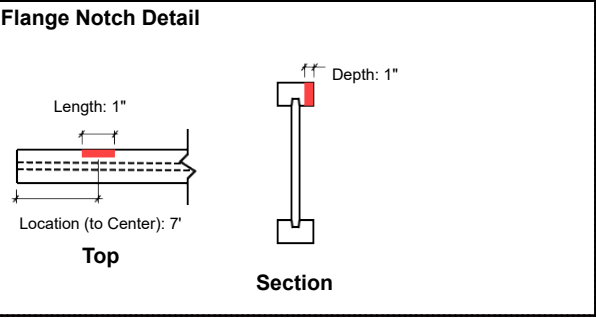


3/20/2025 2:00:20 PM UTC  
ForteWEB v3.9, Engine: V8.4.3.94, Data: V8.1.7.3  
File Name: DC 154 NOTCHES

Weyerhaeuser Notes

Weyerhaeuser warrants that the sizing of its products will be in accordance with Weyerhaeuser product design criteria and published design values. Weyerhaeuser expressly disclaims any other warranties related to the software. Use of this software is not intended to circumvent the need for a design professional as determined by the authority having jurisdiction. The designer of record, builder or framer is responsible to assure that this calculation is compatible with the overall project. Accessories (Rim Board, Blocking Panels and Squash Blocks) are not designed by this software. Products manufactured at Weyerhaeuser facilities are third-party certified to sustainable forestry standards. Weyerhaeuser Engineered Lumber Products have been evaluated by ICC-ES under evaluation reports ESR-1153 and ESR-1387 and/or tested in accordance with applicable ASTM standards. For current code evaluation reports, Weyerhaeuser product literature and installation details refer to [www.weyerhaeuser.com/woodproducts/document-library](http://www.weyerhaeuser.com/woodproducts/document-library).

The product application, input design loads, dimensions and support information have been provided by Import from Sapphire software

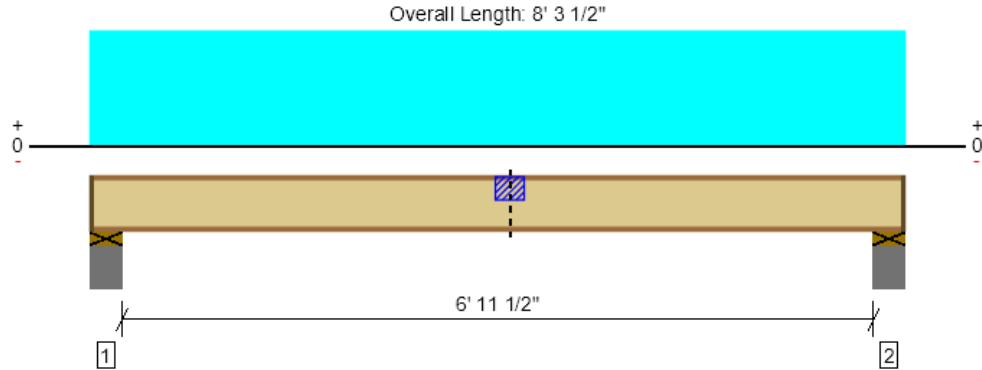


ForteWEB Software Operator	Job Notes
Dylan Vaughn UFPI (706) 367-2781 dylan.vaughn@ufpi.com	



1st Floor, FC1: J5 (i234)

1 piece(s) 11 7/8" TJI® 210 @ 16" OC



Drawing is Conceptual. All locations are measured from the outside face of left support (or left cantilever end). All dimensions are horizontal (typ.).

Design Results	Actual @ Location	Allowed	Result	LDF	Load: Combination (Pattern)
Member Reaction (lbs)	270 @ 7"	1460 (3.50")	Passed (19%)	1.00	1.0 D + 1.0 L (All Spans)
Shear (lbs)	232 @ 8"	1655	Passed (14%)	1.00	1.0 D + 1.0 L (All Spans)
Moment (Ft-lbs)	423 @ 4' 1 3/4"	3795	Passed (11%)	1.00	1.0 D + 1.0 L (All Spans)
Live Load Defl. (in)	0.014 @ 4' 1 11/16"	0.178	Passed (L/999+)	--	1.0 D + 1.0 L (All Spans)
Total Load Defl. (in)	0.018 @ 4' 1 11/16"	0.356	Passed (L/999+)	--	1.0 D + 1.0 L (All Spans)
TJ-Pro™ Rating	67	40	Passed	--	--

Member Length : 8' 1 1/4"  
System : Floor  
Member Type : Joist  
Building Use : Residential  
Building Code : IBC 2015  
Design Methodology : ASD

- Deflection criteria: LL (L/480) and TL (L/240).
- Allowed moment does not reflect the adjustment for the beam stability factor.
- A structural analysis of the deck has not been performed.
- Deflection analysis is based on composite action with a single layer of 23/32" Weyerhaeuser Edge™ Panel (24" Span Rating) that is glued and nailed down.
- Additional considerations for the TJ-Pro™ Rating include: None.

Supports	Bearing Length			Loads to Supports (lbs)			Accessories	Details
	Total	Available	Required	Dead	Floor Live	Factored		
1 - Plate on concrete - SPF	8.00"	6.88"	1.75"	55	221	276	1 1/8" Rim Board	A3
2 - Plate on concrete - SPF	8.00"	6.88"	1.75"	55	221	276	1 1/8" Rim Board	A3

Rim Board is assumed to carry all loads applied directly above it, bypassing the member being designed.

Lateral Bracing	Bracing Intervals	Comments
Top Edge (Lu)	8' 1" o/c	
Bottom Edge (Lu)	8' 1" o/c	

- TJI joists are only analyzed using Maximum Allowable bracing solutions.
- Maximum allowable bracing intervals based on applied load.

Vertical Load	Location	Spacing	Dead (0.90)	Floor Live (1.00)	Comments
1 - Uniform (PLF)	0 to 8' 3 1/2"	N/A	13.3	53.3	Imported Load

Notch Type	Flange	Length	Depth	Location	Compression Moment (Ft-lbs)			Tension Moment (Ft-lbs)			Comments
					Actual	Allowed	Result	Actual	Allowed	Result	
Along Side	Top	1"	1"	4' 3 1/4"	423	1956	Passed (22%)	0	1215	Passed (0%)	

- Notches are not allowed on adjacent joists.

### Weyerhaeuser Notes

Weyerhaeuser warrants that the sizing of its products will be in accordance with Weyerhaeuser product design criteria and published design values. Weyerhaeuser expressly disclaims any other warranties related to the software. Use of this software is not intended to circumvent the need for a design professional as determined by the authority having jurisdiction. The designer of record, builder or framer is responsible to assure that this calculation is compatible with the overall project. Accessories (Rim Board, Blocking Panels and Squash Blocks) are not designed by this software. Products manufactured at Weyerhaeuser facilities are third-party certified to sustainable forestry standards. Weyerhaeuser Engineered Lumber Products have been evaluated by ICC-ES under evaluation reports ESR-1153 and ESR-1387 and/or tested in accordance with applicable ASTM standards. For current code evaluation reports, Weyerhaeuser product literature and installation details refer to [www.weyerhaeuser.com/woodproducts/document-library](http://www.weyerhaeuser.com/woodproducts/document-library).

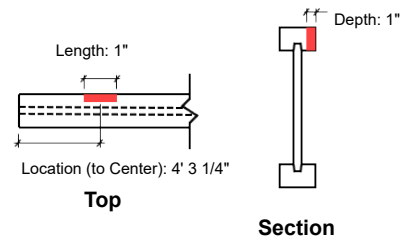
The product application, input design loads, dimensions and support information have been provided by Import from Sapphire software

ForteWEB Software Operator	Job Notes
Dylan Vaughn UFPI (706) 367-2781 dylan.vaughn@ufpi.com	



3/20/2025 2:00:20 PM UTC  
ForteWEB v3.9, Engine: V8.4.3.94, Data: V8.1.7.3  
File Name: DC 154 NOTCHES

Flange Notch Detail



ForteWEB Software Operator	Job Notes
Dylan Vaughn UFPI (706) 367-2781 dylan.vaughn@ufpi.com	

