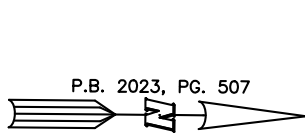


SITE PLAN FOR
NEW HOME, INC.
 1833 BALLARD ROAD
 LOT 7, HARNETT CENTRAL HOLDINGS, LLC
 HECTOR'S CREEK TOWNSHIP, HARNETT COUNTY, NORTH CAROLINA



KIPLING VILLAGE
 PHASE 1B
 P.B. 2024, PGS. 443-447

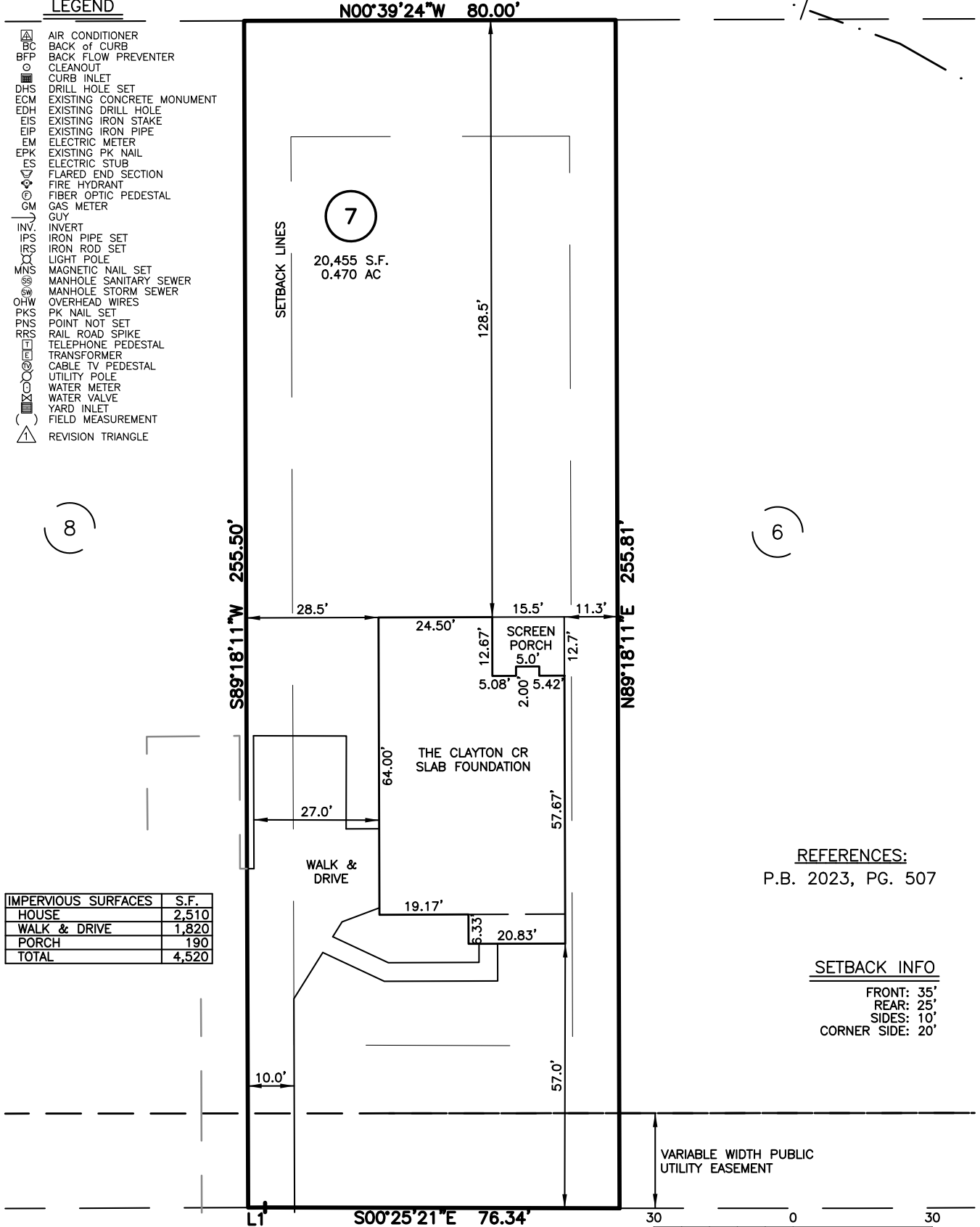
WETLANDS
 SCALED FROM PLAT

LEGEND

- △ AIR CONDITIONER
- BC BACK OF CURB
- BFP BACK FLOW PREVENTER
- CLEANOUT
- CURB INLET
- DHS DRILL HOLE SET
- ECM EXISTING CONCRETE MONUMENT
- EDH EXISTING DRILL HOLE
- EIS EXISTING IRON STAKE
- EIP EXISTING IRON PIPE
- EM ELECTRIC METER
- EPK EXISTING PK NAIL
- ES ELECTRIC STUB
- ▽ FLARED END SECTION
- ⊕ FIRE HYDRANT
- ⊙ FIBER OPTIC PEDESTAL
- GM GAS METER
- GUY
- INV. INVERT
- IPS IRON PIPE SET
- IRS IRON ROD SET
- LIGHT POLE
- MNS MAGNETIC NAIL SET
- ⊙ MANHOLE SANITARY SEWER
- ⊙ MANHOLE STORM SEWER
- OHV OVERHEAD WIRES
- PKS PK NAIL SET
- PNS POINT NOT SET
- RRS RAIL ROAD SPIKE
- ⊙ TELEPHONE PEDESTAL
- ⊙ TRANSFORMER
- ⊙ CABLE TV PEDESTAL
- ⊙ UTILITY POLE
- ⊙ WATER METER
- ⊙ WATER VALVE
- ⊙ YARD INLET
- () FIELD MEASUREMENT
- △ REVISION TRIANGLE

(8)

(6)

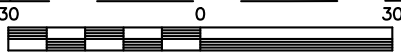


IMPERVIOUS SURFACES	S.F.
HOUSE	2,510
WALK & DRIVE	1,820
PORCH	190
TOTAL	4,520

REFERENCES:
 P.B. 2023, PG. 507

SETBACK INFO
 FRONT: 35'
 REAR: 25'
 SIDES: 10'
 CORNER SIDE: 20'

VARIABLE WIDTH PUBLIC
 UTILITY EASEMENT



SCALE: 1" = 30'

LINE	BEARING	DISTANCE
L1	S00°43'48"E	3.66'

BALLARD ROAD
 60' PUBLIC R/W

THIS IS A SITE PLAN AS DEFINED BY G.S. 160D-102 AND IS NOT INTENDED TO BE ATTACHED TO ANY INSTRUMENT RECORDED IN THE REGISTER OF DEEDS OFFICE

SITE PLAN
 NOT FOR RECORDATION,
 CONVEYANCE OR SALES

REV CODE: 1.FLIP, 2.PLAN, 3.ROTATE, 4.MOVE, 5.SS
 6.SEVERAL OF ABOVE, 7.LAND FEATURE, 8. OTHER

DATE: OCT. 10, 2024

F.B. _____

RWK, PA
ENGINEERING ~ SURVEYING
 CORPORATE LICENSE: C-1771
 101 W. MAIN ST., SUITE 202
 GARNER, NC 27529
 PHONE (919) 779-4854
 FAX (919) 779-4056