

SITE PLAN FOR
NEW HOME, INC.
 1849 BALLARD ROAD
 LOT 6, HARNETT CENTRAL HOLDINGS, LLC
 HECTOR'S CREEK TOWNSHIP, HARNETT COUNTY, NORTH CAROLINA

KIPLING VILLAGE
 PHASE 1B
 P.B. 2024, PGS. 443-447

KIPLING VILLAGE
 PHASE 1A
 P.B. 2024, PGS. 248-253

N 00°39'24" W 80.00'

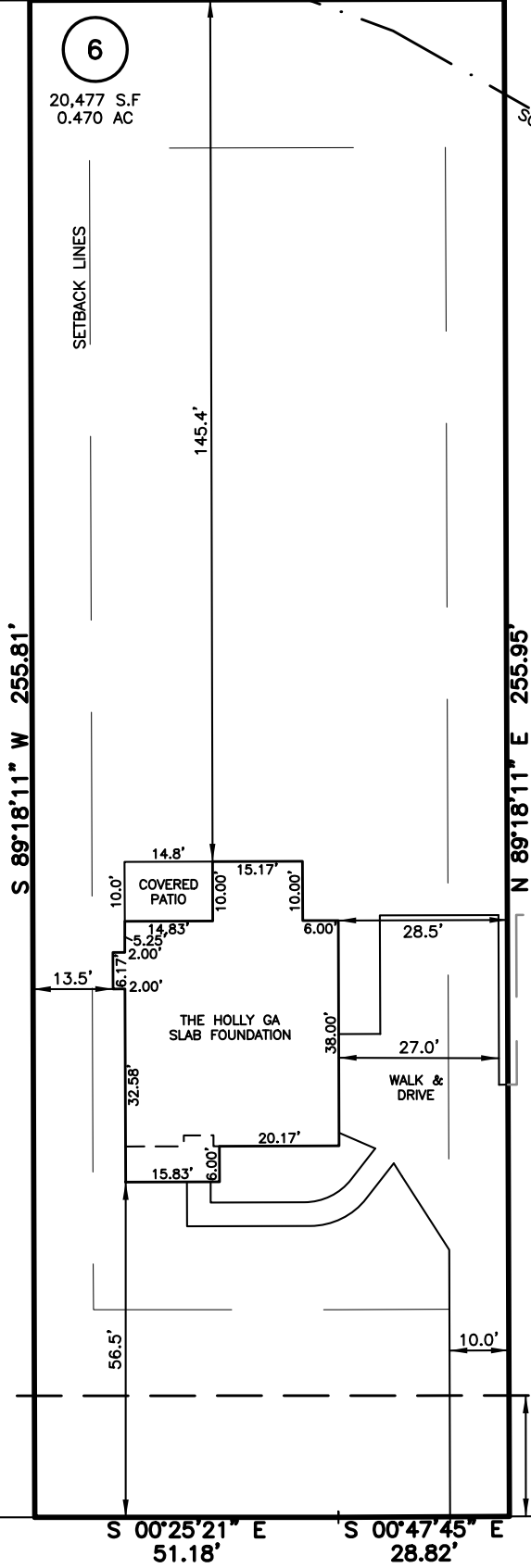
LEGEND

- △ AIR CONDITIONER
- BC BACK OF CURB
- BFP BACK FLOW PREVENTER
- CLEANOUT
- CURB INLET
- DHS DRILL HOLE SET
- ECM EXISTING CONCRETE MONUMENT
- EDH EXISTING DRILL HOLE
- EIS EXISTING IRON STAKE
- EIP EXISTING IRON PIPE
- EM ELECTRIC METER
- EPK EXISTING PK NAIL
- ES ELECTRIC STUB
- FLARED END SECTION
- FIRE HYDRANT
- FIBER OPTIC PEDESTAL
- GM GAS METER
- GUY
- INVERT
- IPS IRON PIPE SET
- IRS IRON ROD SET
- LIGHT POLE
- MNS MAGNETIC NAIL SET
- MANHOLE SANITARY SEWER
- MANHOLE STORM SEWER
- OHW OVERHEAD WIRES
- PKS PK NAIL SET
- PNS POINT NOT SET
- RRS RAIL ROAD SPIKE
- TELEPHONE PEDESTAL
- TRANSFORMER
- CABLE TV PEDESTAL
- UTILITY POLE
- WATER METER
- WATER VALVE
- YARD INLET
- () FIELD MEASUREMENT
- △ REVISION TRIANGLE

P.B. 2023, PG. 507



WETLANDS
 SCALED FROM PLAT



(7)

(5)

S 89°18'11" W 255.81'

N 89°18'11" E 255.95'

REFERENCES:

P.B. 2023, PG. 507

IMPERVIOUS SURFACES	S.F.
HOUSE	1,630
WALK & DRIVE	1,810
PATIO	150
TOTAL	3,590

SETBACK INFO

FRONT: 35'
 REAR: 25'
 SIDES: 10'
 CORNER SIDE: 20'

S 00°25'21" E 51.18' S 00°47'45" E 28.82'

BALLARD ROAD
 60' PUBLIC R/W



SCALE: 1" = 30'

THIS IS A SITE PLAN AS DEFINED BY G.S. 160D-102 AND IS NOT INTENDED TO BE ATTACHED TO ANY INSTRUMENT RECORDED IN THE REGISTER OF DEEDS OFFICE

SITE PLAN
 NOT FOR RECORDATION,
 CONVEYANCE OR SALES

REV CODE: 1.FLIP, 2.PLAN, 3.ROTATE, 4.MOVE, 5.SS
 6.SEVERAL OF ABOVE, 7.LAND FEATURE, 8. OTHER

DATE: OCT. 10, 2024

F.B. _____

RWK, PA

ENGINEERING ~ SURVEYING

CORPORATE LICENSE: C-1771
 101 W. MAIN ST., SUITE 202
 GARNER, NC 27529
 PHONE (919) 779-4854
 FAX (919) 779-4056