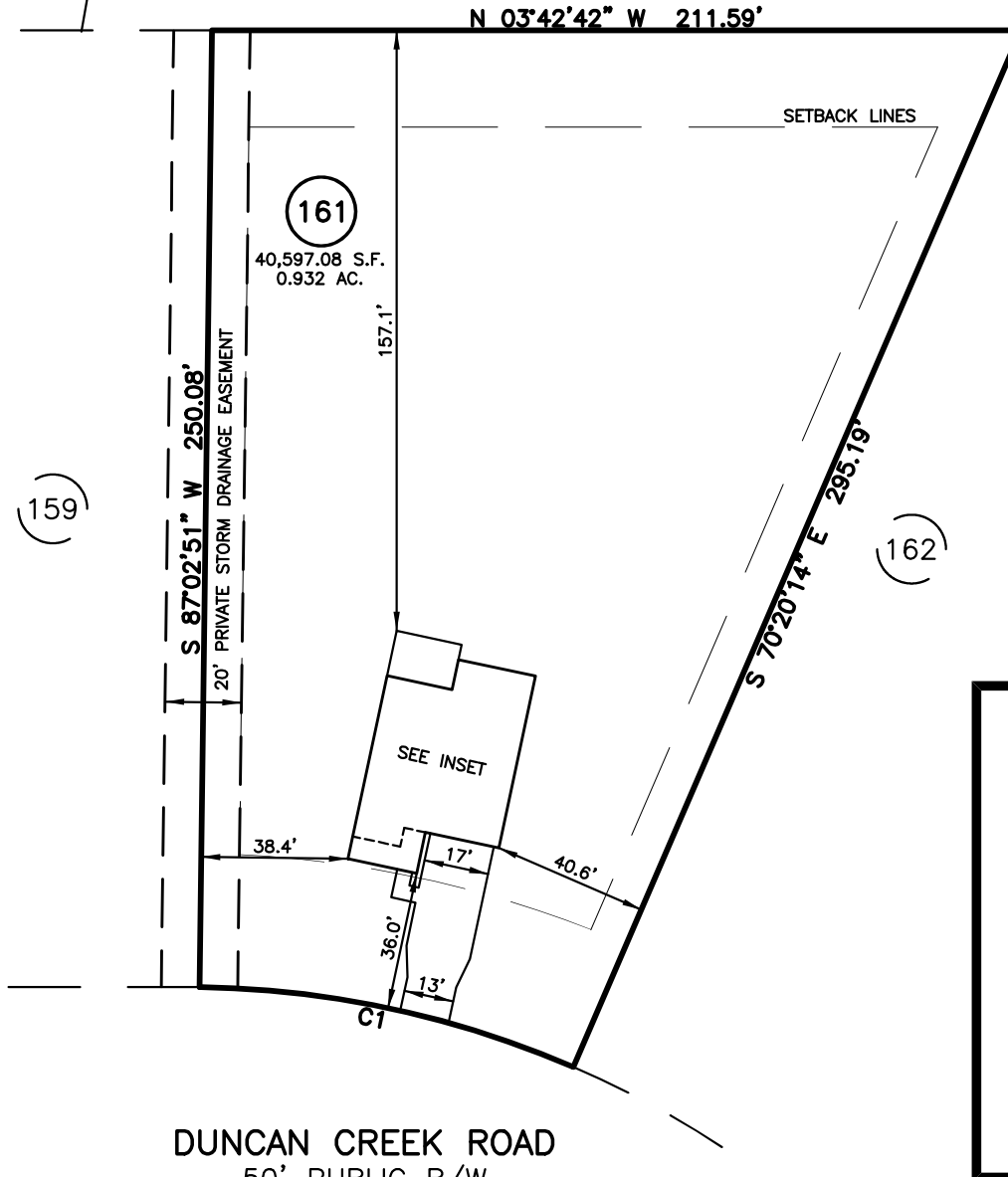


PLOT PLAN FOR
NEW HOME, INC.
 320 DUNCAN CREEK ROAD
 LOT 161, DUNCAN'S CREEK, PHASE I
 UPPER LITTLE CREEK TOWNSHIP, HARNETT COUNTY, NORTH CAROLINA

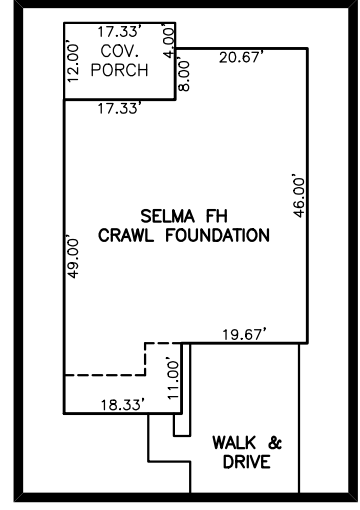
N/F
 PAMELA S. BROWN
 PIN: 0630-05-8478
 PID: 130630 0091
 DB 2462 PG 322
 PC #2 PG 331 (LOT 1)

B.M. 2022, PGS. 594-596



LEGEND

- ▲ AIR CONDITIONER
- BC BACK OF CURB
- BFP BACK FLOW PREVENTER
- CLEANOUT
- CURB INLET
- DHS DRILL HOLE SET
- ECM EXISTING CONCRETE MONUMENT
- EDH EXISTING DRILL HOLE
- EIS EXISTING IRON STAKE
- EIP EXISTING IRON PIPE
- EM ELECTRIC METER
- EPK EXISTING PK NAIL
- ES ELECTRIC STUB
- ▽ FLARED END SECTION
- ⊕ FIRE HYDRANT
- FIBER OPTIC PEDESTAL
- GM GAS METER
- GUY GUY
- INV. INVERT
- IPS IRON PIPE SET
- IRS IRON ROD SET
- LIGHT POLE
- MNS MAGNETIC NAIL SET
- ⊕ MANHOLE SANITARY SEWER
- ⊕ MANHOLE STORM SEWER
- OHV OVERHEAD WIRES
- PKS PK NAIL SET
- PNS POINT NOT SET
- RRS RAIL ROAD SPIKE
- ⊕ TELEPHONE PEDESTAL
- ⊕ TRANSFORMER
- ⊕ CABLE TV PEDESTAL
- UTILITY POLE
- WATER METER
- WATER VALVE
- YARD INLET
- () FIELD MEASUREMENT



INSET SCALE: 1" = 30'

SETBACK INFO

FRONT: _____ 35'
 REAR: _____ 25'
 SIDES: _____ 10'
 CORNER SIDE: _____ 20'

NUM	RADIUS	ARC	DELTA	CHORD BRG	CHORD
C1	255.00'	100.65'	22°36'56"	S 08°21'19" W	100.00'

REFERENCES:

B.M. 2022, PG. 594-596



NOTES

1. THIS SURVEY SUBJECT TO ANY FACTS THAT MAY BE DISCLOSED BY A FULL AND ACCURATE TITLE SEARCH.
2. THIS MAP MAY NOT BE A CERTIFIED SURVEY AND HAS NOT BEEN REVIEWED BY A LOCAL GOVERNMENT AGENCY FOR COMPLIANCE WITH ANY APPLICABLE LAND DEVELOPMENT REGULATIONS AND HAS NOT BEEN REVIEWED FOR COMPLIANCE WITH RECORDING REQUIREMENTS FOR PLATS.

IMPERVIOUS SURFACES	
HOUSE	1,820 S.F.
WALK & DRIVE	790 S.F.
PORCH	210 S.F.
TOTAL	2,820 S.F.

PLOT PLAN
 PRELIMINARY PLAT- NOT FOR RECORDATION,
 CONVEYANCE OR SALES

REV CODE: 1.FLIP, 2.PLAN, 3.ROTATE, 4.MOVE, 5.SS
 6.SEVERAL OF ABOVE, 7.LAND FEATURE, 8. OTHER

REV1: AUG. 21, 2024
 DATE: AUG. 14, 2024
 F.B. _____

RWK, PA
ENGINEERING ~ SURVEYING
 CORPORATE LICENSE: C-1771
 101 W. MAIN ST., SUITE 202
 GARNER, NC 27529
 PHONE (919) 779-4854
 FAX (919) 779-4056