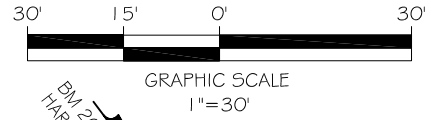
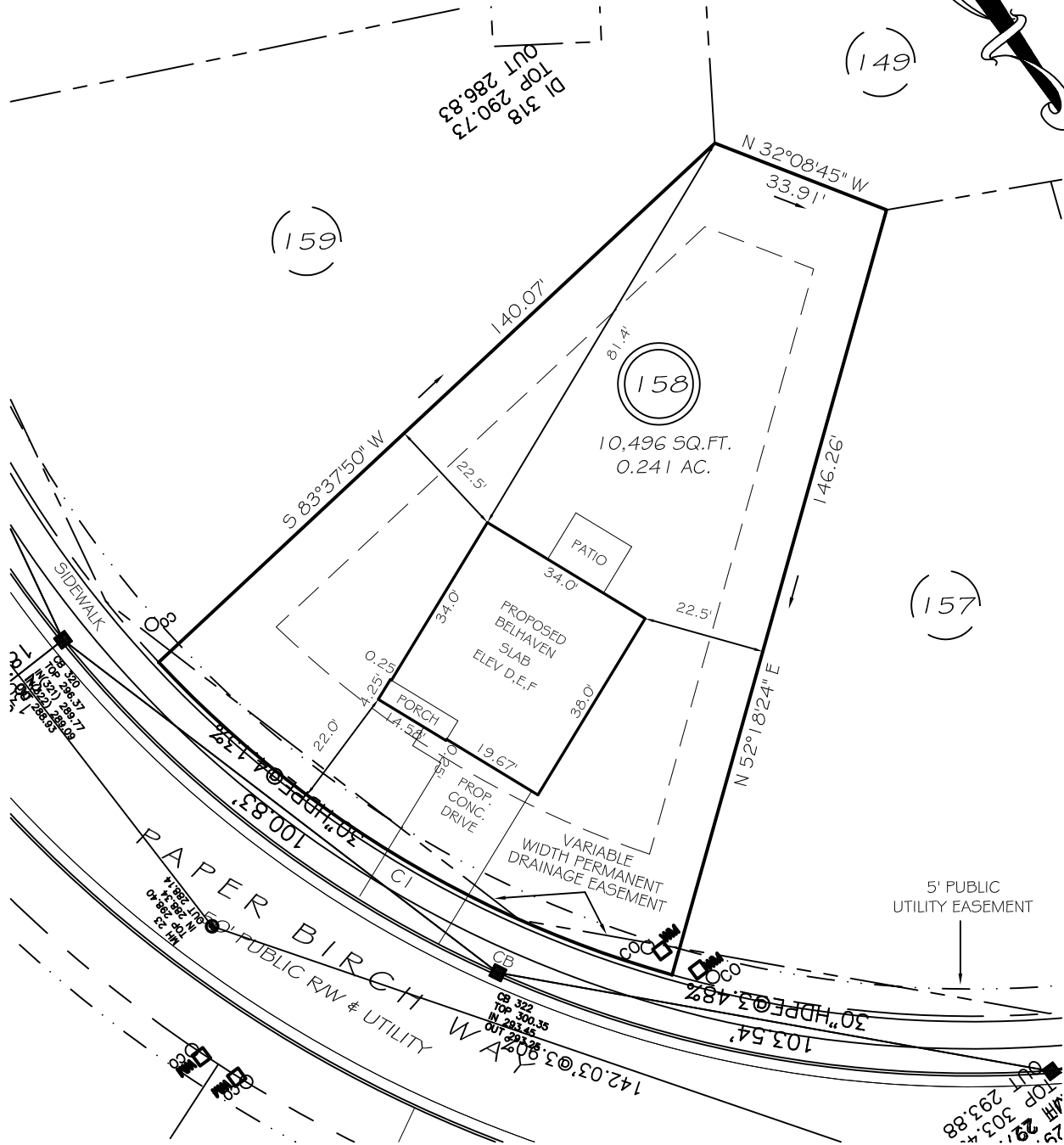


I, MICHAEL P. GRIFFIN, certify that under my direction and supervision this map was drawn from an actual field survey; that the error of closure of the survey as calculated by coordinates is 1:10,000+; that the area shown hereon was calculated by coordinates. Dashed lines shown hereon were not surveyed.

Witness my hand and seal this day of MONTH 2024.



BM 2025 PG 100-102
HARNETT CO. REGISTRY



IMPERVIOUS AREAS

HOUSE	1 297 SQ. FT.
DRIVE & WALKS	403 SQ. FT.
PATIO	120 SQ. FT.
TOTAL	1 820 SQ. FT.
ALLOWED	3000 SQ. FT.

SETBACKS

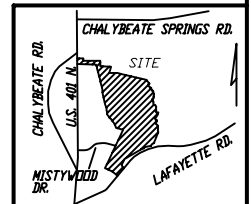
FRONT	20'
REAR	15'
SIDE	10'
CORNER SIDE	15'

CI R=205.00' L=45.79' S31°21'18"W 45.70'

PRELIMINARY
NOT FOR RECORDATION,
SALES OR CONVEYANCE

LEGEND

EIP	EXISTING IRON PIPE	MH	MANHOLE
IPS	IRON PIPE SET	WM	WATER METER
RW	RIGHT OF WAY	CO	CLEAN OUT
N/F	NOW OR FORMERLY	FH	FIRE HYDRANT
EIS	EXISTING IRON STAKE	CB	CATCH BASIN



GLS GRIFFIN LAND SURVEYING, INC.
P.O. BOX 148
FUQUAY-VARINA, NC 27526
(919) - 567 - 1963
FIRM LIC.# C-1345

PLOT PLAN
FOR
D. R. HORTON
WOODGROVE
LOT 158
PAPER BIRCH WAY
NORTH CAROLINA
HARNETT CO. HECTOR'S CREEK TWSHP

DRAWN BY **KDF**

DATE **9/25/24**

CHECKED BY **MPG**

SCALE **1" = 30'**