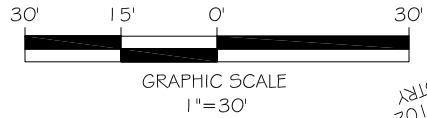


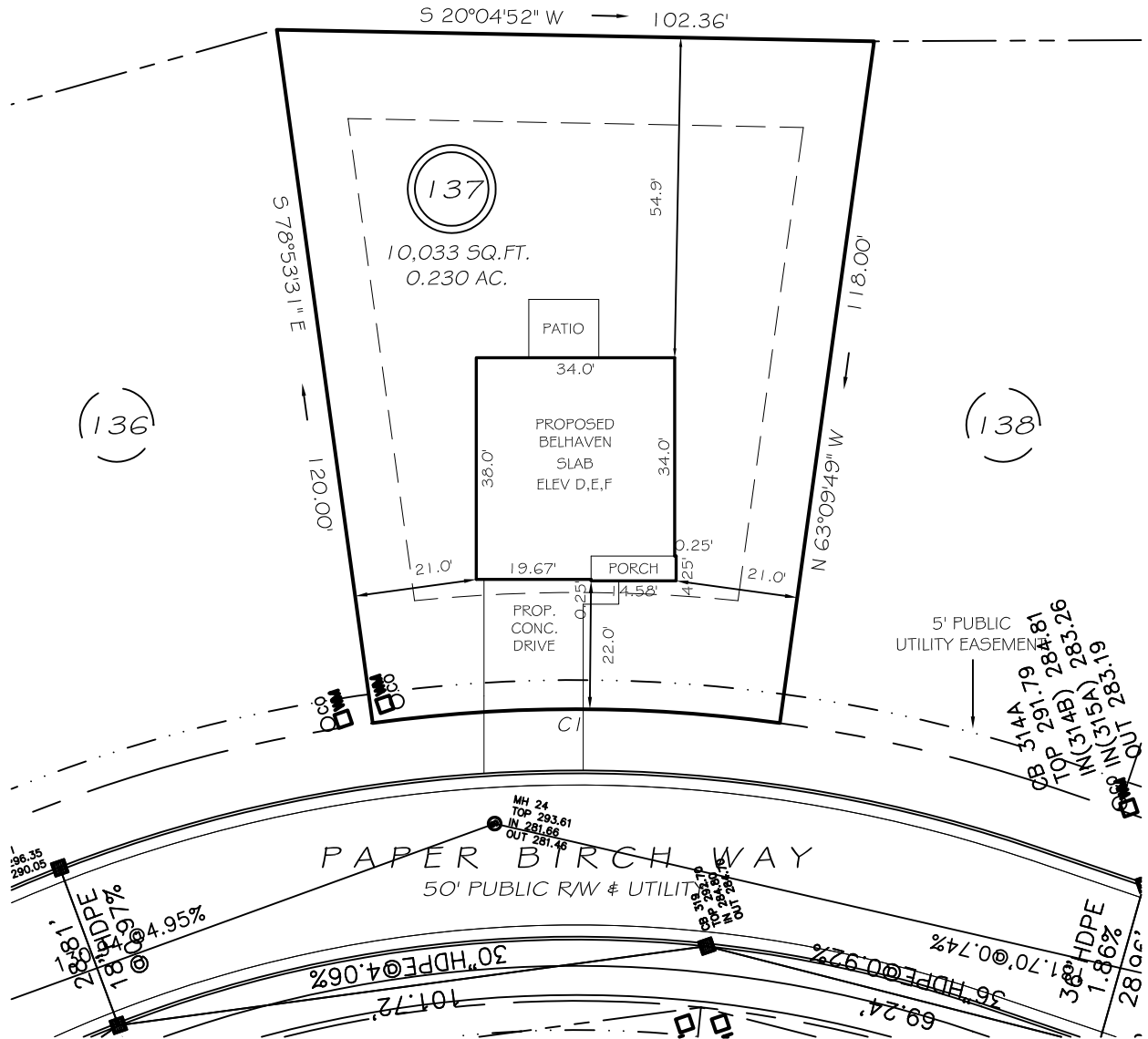
I, MICHAEL P. GRIFFIN, certify that under my direction and supervision this map was drawn from an actual field survey, that the error of closure of the survey as calculated by coordinates is 1: 10,000+; that the area shown hereon was calculated by coordinates. Dashed lines shown hereon were not surveyed.

Witness my hand and seal this day of MONTH 2024.



BM 2023 F65 100-102
HARNETT CO. REGISTRY

OPEN SPACE



IMPERVIOUS AREAS

HOUSE	1297 SQ. FT.
DRIVE & WALKS	403 SQ. FT.
PATIO	120 SQ. FT.
TOTAL	1820 SQ. FT.
ALLOWED	3000 SQ. FT.

SETBACKS

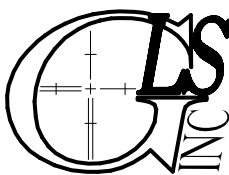
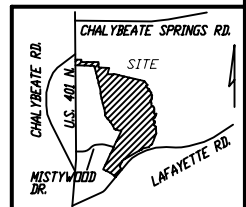
FRONT	20'
REAR	15'
SIDE	10'
CORNER SIDE	15'

CI R=255.00' L=70.00' N18°58'20"E 69.78'

P R E L I M I N A R Y
NOT FOR RECORDATION,
SALES OR CONVEYANCE

LEGEND

EIP	EXISTING IRON PIPE	MH	MANHOLE
IPS	IRON PIPE SET	WM	WATER METER
R/W	RIGHT OF WAY	CO	CLEAN OUT
N/F	NOW OR FORMERLY	FH	FIRE HYDRANT
EIS	EXISTING IRON STAKE	CB	CATCH BASIN



GRIFFIN LAND SURVEYING, INC.

P. O. BOX 148
FUQUAY-VARINA, NC 27526
(919) - 567 - 1963

FIRM LIC.# C-1345

PLOT PLAN
FOR

D. R. HORTON

WOODGROVE

LOT 137

PAPER BIRCH WAY

NORTH CAROLINA

HARNETT CO. HECTOR'S CREEK TWSHP

DRAWN BY **KDF**

DATE **9/25/24**

CHECKED BY **MPG**

SCALE **1" = 30'**