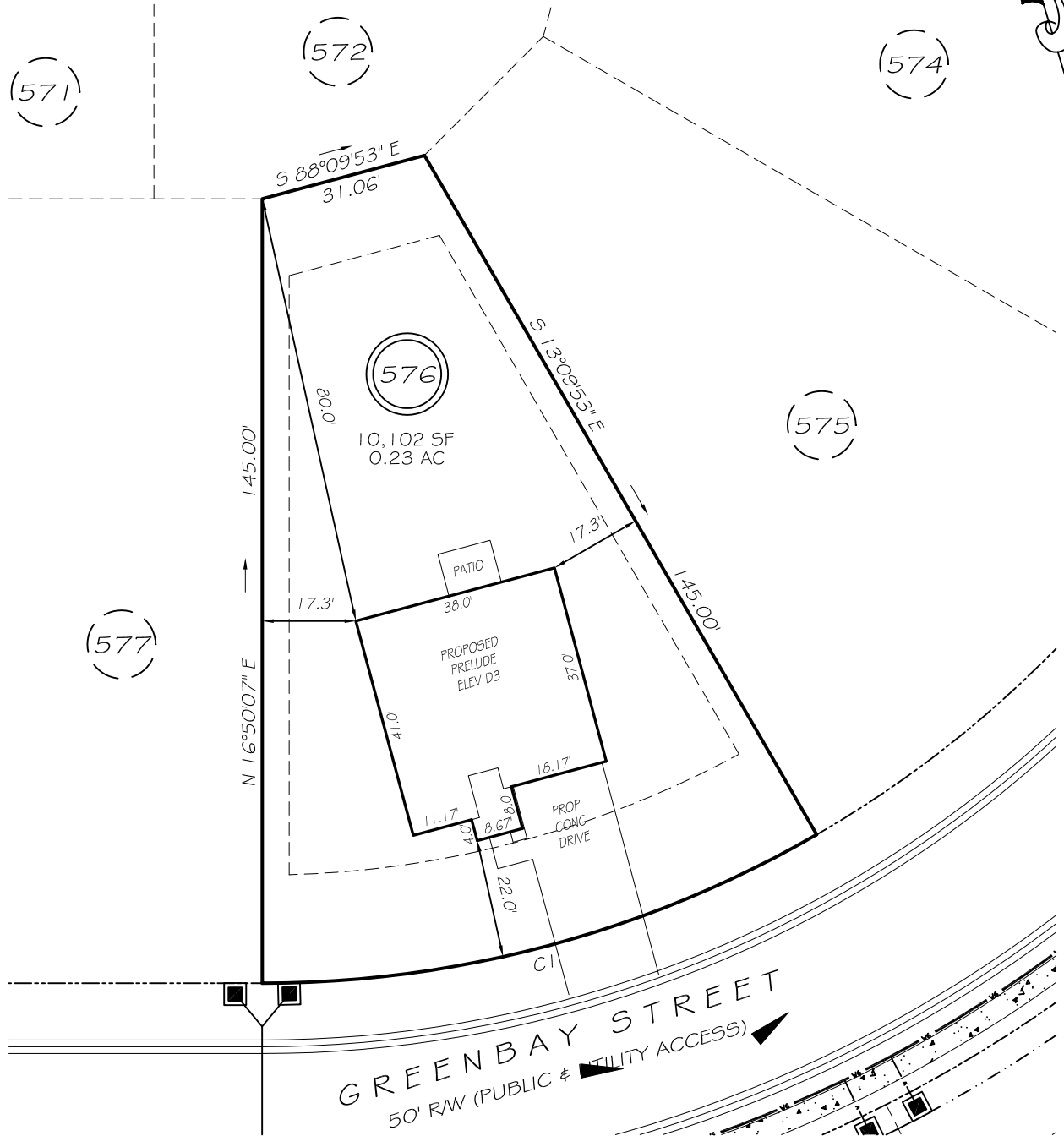
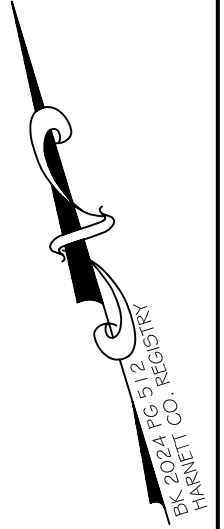


I, MICHAEL P. GRIFFIN, certify that under my direction and supervision this map was drawn from an actual field survey; that the error of closure of the survey as calculated by coordinates is 1: 10,000+; that the area shown hereon was calculated by coordinates. Dashed lines shown hereon were not surveyed.

Witness my hand and seal this day of MONTH 2024.

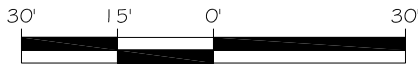


IMPERVIOUS AREAS

HOUSE	1520 SQ. FT.
DRIVE & WALKS	543 SQ. FT.
PATIO	80 SQ. FT.
<b>TOTAL</b>	<b>2143 SQ. FT.</b>
ALLOWED	3000 SQ. FT.

CI R=205.00' L=107.34' N88°09'53"W 106.12'

REVISION: RIGHT HAND 10/14/24



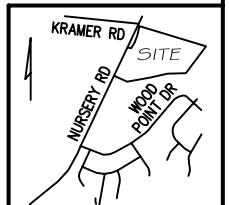
GRAPHIC SCALE  
1"=30'

ZONING: RA-20R  
SETBACKS  
FRONT 20'  
CORNER SIDE 20'  
REAR 15'  
SIDE 5'

**PRELIMINARY**  
NOT FOR RECORDATION,  
SALES OR CONVEYANCE

LEGEND

EIP	EXISTING IRON PIPE	FES	FLARED END SECTION
RBS	REBAR SET	WM	WATER METER
R/W	RIGHT OF WAY	CO	CLEAN OUT
N/F	NOW OR FORMERLY	FH	FIRE HYDRANT
EIS	EXISTING IRON STAKE	CB	CATCH BASIN



**GRIFFIN LAND SURVEYING, INC.**

P. O. BOX 148  
FUQUAY-VARINA, NC 27526  
(919) - 567 - 1963

FIRM LIC.# C-1345

**PLOT PLAN**  
FOR

**DREAM FINDERS HOMES LLC**

**CREEKSIDE OAKS  
NORTH SUBDIVISION  
LOT 576**

GREENBAY STREET

LILLINGTON, N.C.

HARNETT COUNTY ANDERSON CREEK TOWNSHIP

DRAWN BY **KDF**

DATE **10/3/24**

CHECKED BY **MPG**

SCALE **1" = 30'**