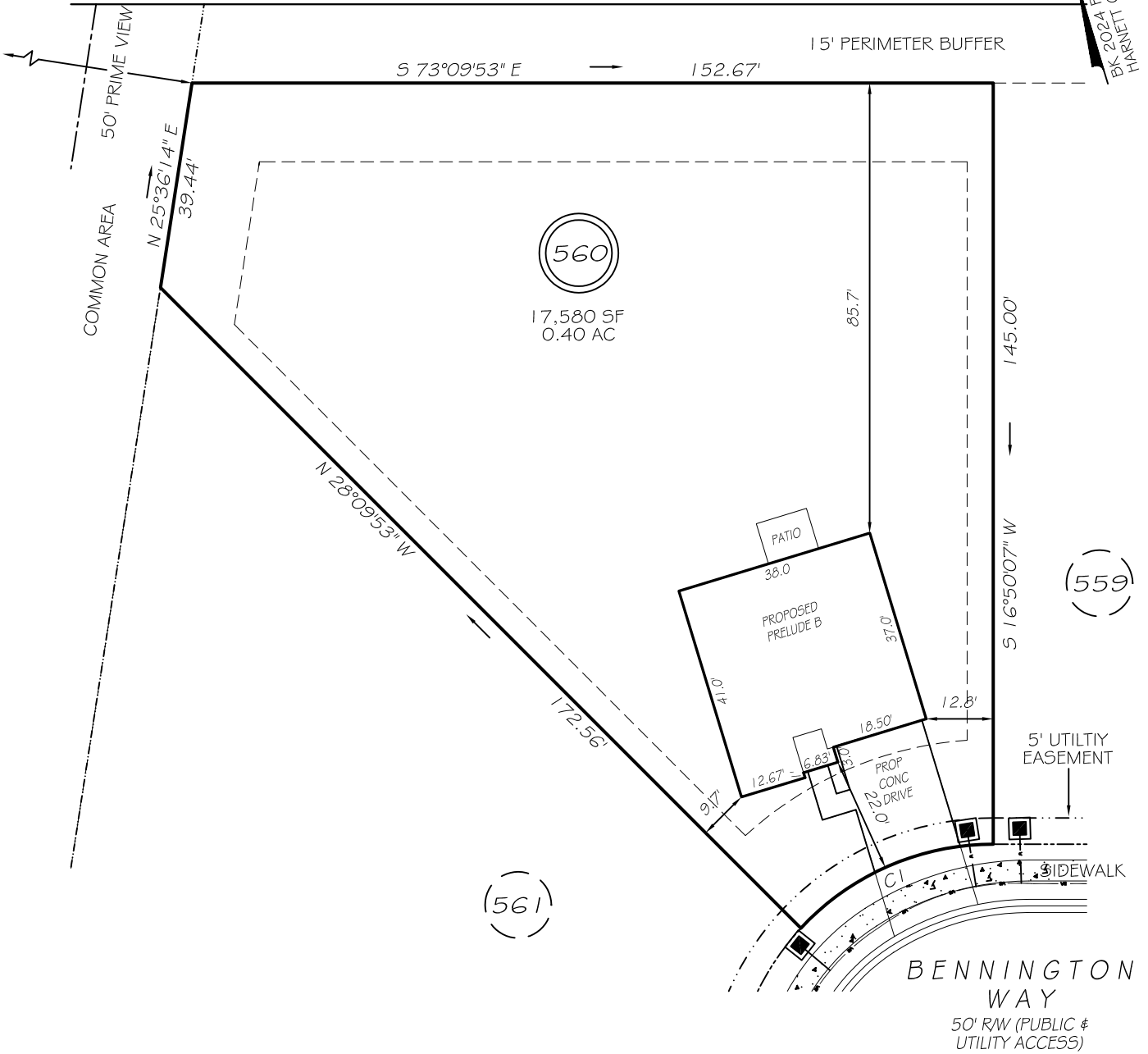


I, MICHAEL P. GRIFFIN, certify that under my direction and supervision this map was drawn from an actual field survey; that the error of closure of the survey as calculated by coordinates is 1: 10,000+; that the area shown hereon was calculated by coordinates. Dashed lines shown hereon were not surveyed.

Witness my hand and seal this day of MONTH 2024.

N/F
 COUNTY OF HARNETT, NORTH CAROLINA
 PARCEL FIVE OF DB 3334, PG 574

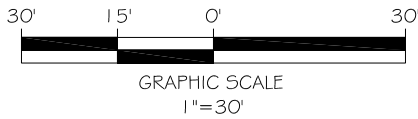
EX 2024 FG 512
 HARNETT CO. REGISTRY



IMPERVIOUS AREAS

HOUSE	1477 SQ. FT.
DRIVE & WALKS	468 SQ. FT.
PATIO	80 SQ. FT.
TOTAL	2025 SQ. FT.
ALLOWED	3000 SQ. FT.

CI R=50.00' L=41.15' S83°15'25"W 40.00'

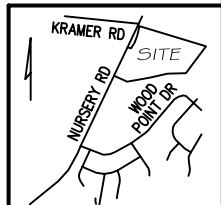


ZONING: RA-20R
 SETBACKS
 FRONT 20'
 CORNER SIDE 20'
 REAR 15'
 SIDE 5'

P R E L I M I N A R Y
 NOT FOR RECORDATION,
 SALES OR CONVEYANCE

LEGEND

EIP	EXISTING IRON PIPE	FES	FLARED END SECTION
RBS	REBAR SET	WM	WATER METER
R/W	RIGHT OF WAY	CO	CLEAN OUT
N/F	NOW OR FORMERLY	FH	FIRE HYDRANT
EIS	EXISTING IRON STAKE	CB	CATCH BASIN



GRIFFIN LAND SURVEYING, INC.

P. O. BOX 148
 FUQUAY-VARINA, NC 27526
 (919) - 567 - 1963

FIRM LIC.# C-1345

PLOT PLAN
 FOR

DREAM FINDERS HOMES LLC

**CREEKSIDE OAKS
 NORTH SUBDIVISION
 LOT 560**

BENNINGTON WAY
 LILLINGTON, N.C.

HARNETT COUNTY ANDERSON CREEK TOWNSHIP

DRAWN BY **KDF**

DATE **10/3/24**

CHECKED BY **MPG**

SCALE **1" = 30'**