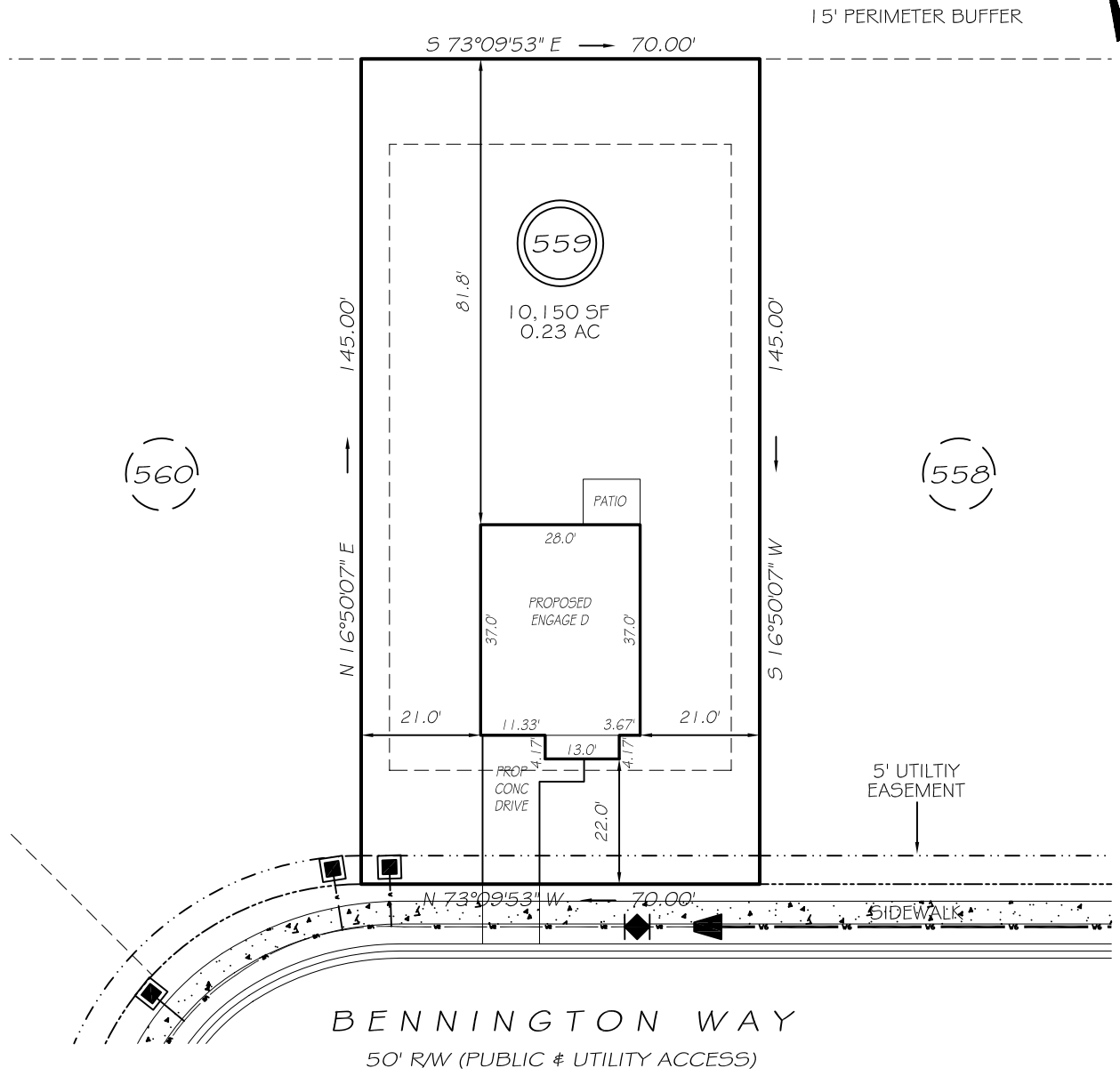


I, MICHAEL P. GRIFFIN, certify that under my direction and supervision this map was drawn from an actual field survey; that the error of closure of the survey as calculated by coordinates is 1: 10,000+; that the area shown hereon was calculated by coordinates. Dashed lines shown hereon were not surveyed.

Witness my hand and seal this day of MONTH 2024.

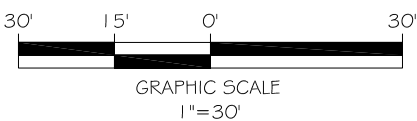
N/F
 COUNTY OF HARNETT, NORTH CAROLINA
 PARCEL FIVE OF DB 3334, PG 574

EX 2024 FG 512
 HARNETT CO. REGISTRY



IMPERVIOUS AREAS

HOUSE	1090 SQ. FT.
DRIVE & WALKS	297 SQ. FT.
PATIO	80 SQ. FT.
TOTAL	1467 SQ. FT.
ALLOWED	3000 SQ. FT.

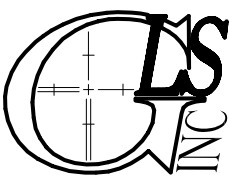
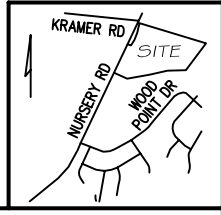


ZONING: RA-20R
 SETBACKS
 FRONT 20'
 CORNER SIDE 20'
 REAR 15'
 SIDE 5'

P R E L I M I N A R Y
 NOT FOR RECORDATION,
 SALES OR CONVEYANCE

LEGEND

EIP	EXISTING IRON PIPE	FES	FLARED END SECTION
RBS	REBAR SET	WM	WATER METER
R/W	RIGHT OF WAY	CO	CLEAN OUT
N/F	NOW OR FORMERLY	FH	FIRE HYDRANT
EIS	EXISTING IRON STAKE	CB	CATCH BASIN



GRIFFIN LAND SURVEYING, INC.
 P. O. BOX 148
 FUQUAY-VARINA, NC 27526
 (919) - 567 - 1963
 FIRM LIC.# C-1345

PLOT PLAN
 FOR
DREAM FINDERS HOMES LLC
 CREEKSIDE OAKS
 NORTH SUBDIVISION
 LOT 559
 BENNINGTON WAY
 LILLINGTON, N.C.
 HARNETT COUNTY ANDERSON CREEK TOWNSHIP

DRAWN BY KDF	DATE 10/3/24
CHECKED BY MPG	SCALE 1" = 30'