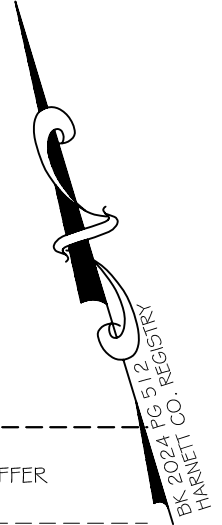
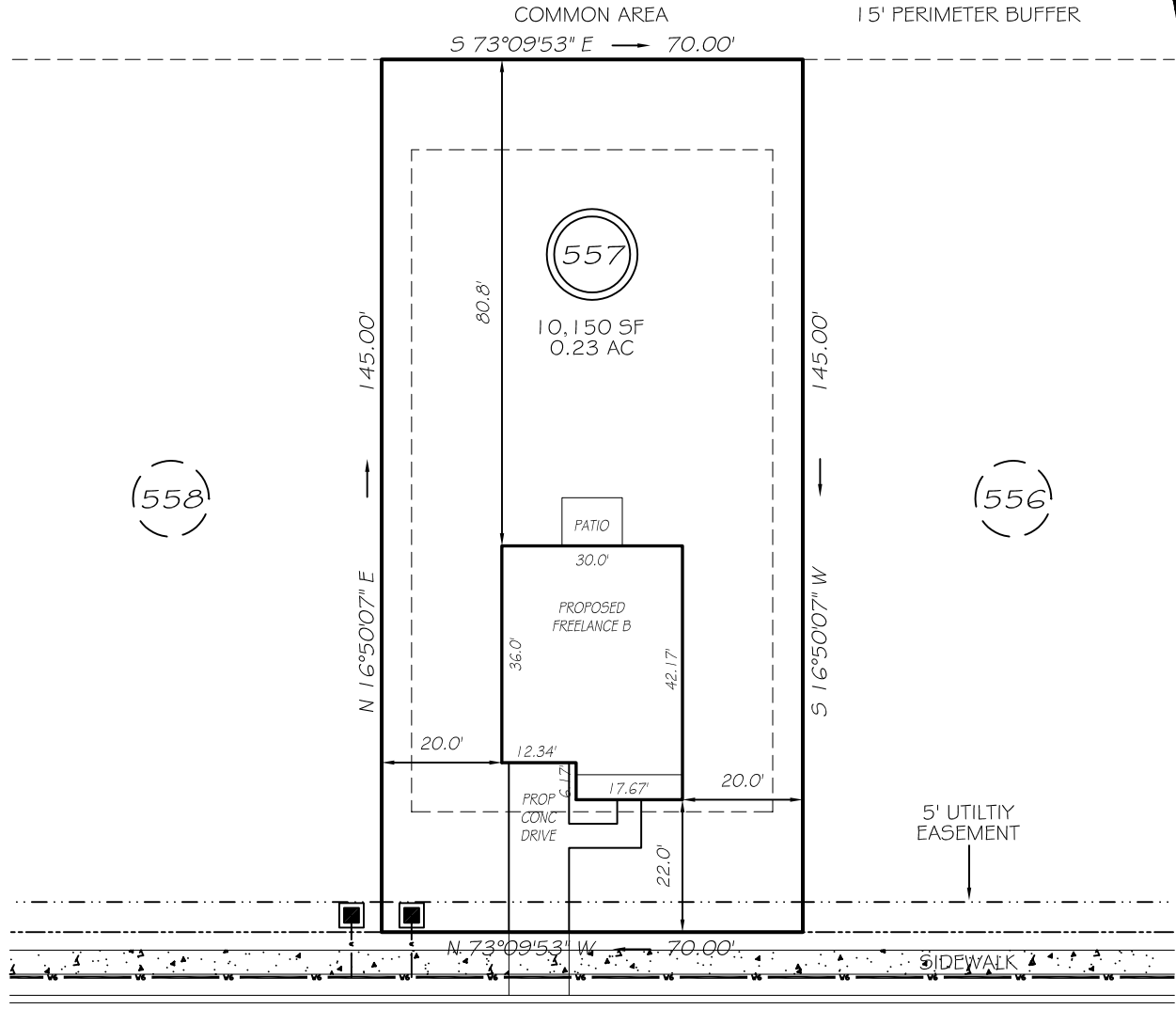


I, MICHAEL P. GRIFFIN, certify that under my direction and supervision this map was drawn from an actual field survey; that the error of closure of the survey as calculated by coordinates is 1: 10,000+; that the area shown hereon was calculated by coordinates. Dashed lines shown hereon were not surveyed.

Witness my hand and seal this day of MONTH 2024.



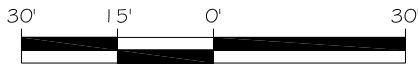
N/F  
COUNTY OF HARNETT, NORTH CAROLINA  
PARCEL FIVE OF DB 3334, PG 574



BENNINGTON WAY  
50' R/W (PUBLIC & UTILITY ACCESS)

IMPERVIOUS AREAS

HOUSE	1189 SQ. FT.
DRIVE & WALKS	346 SQ. FT.
PATIO	80 SQ. FT.
<b>TOTAL</b>	<b>1615 SQ. FT.</b>
ALLOWED	3000 SQ. FT.

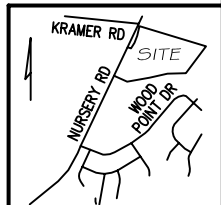


GRAPHIC SCALE  
1"=30'

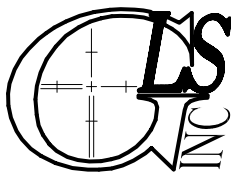
ZONING: RA-20R  
SETBACKS  
FRONT 20'  
CORNER SIDE 20'  
REAR 15'  
SIDE 5'

LEGEND

EIP	EXISTING IRON PIPE	FES	FLARED END SECTION
RBS	REBAR SET	WM	WATER METER
R/W	RIGHT OF WAY	CO	CLEAN OUT
N/F	NOW OR FORMERLY	FH	FIRE HYDRANT
EIS	EXISTING IRON STAKE	CB	CATCH BASIN



**P R E L I M I N A R Y**  
NOT FOR RECORDATION,  
SALES OR CONVEYANCE



GRIFFIN LAND SURVEYING, INC.

P. O. BOX 148  
FUQUAY-VARINA, NC 27526  
(919) - 567 - 1963

FIRM LIC.# C-1345

PLOT PLAN  
FOR

**DREAM FINDERS HOMES LLC**

CREEKSIDE OAKS  
NORTH SUBDIVISION  
LOT 557

BENNINGTON WAY  
LILLINGTON, N.C.

HARNETT COUNTY ANDERSON CREEK TOWNSHIP

DRAWN BY **KDF**

DATE **10/3/24**

CHECKED BY **MPG**

SCALE **1" = 30'**