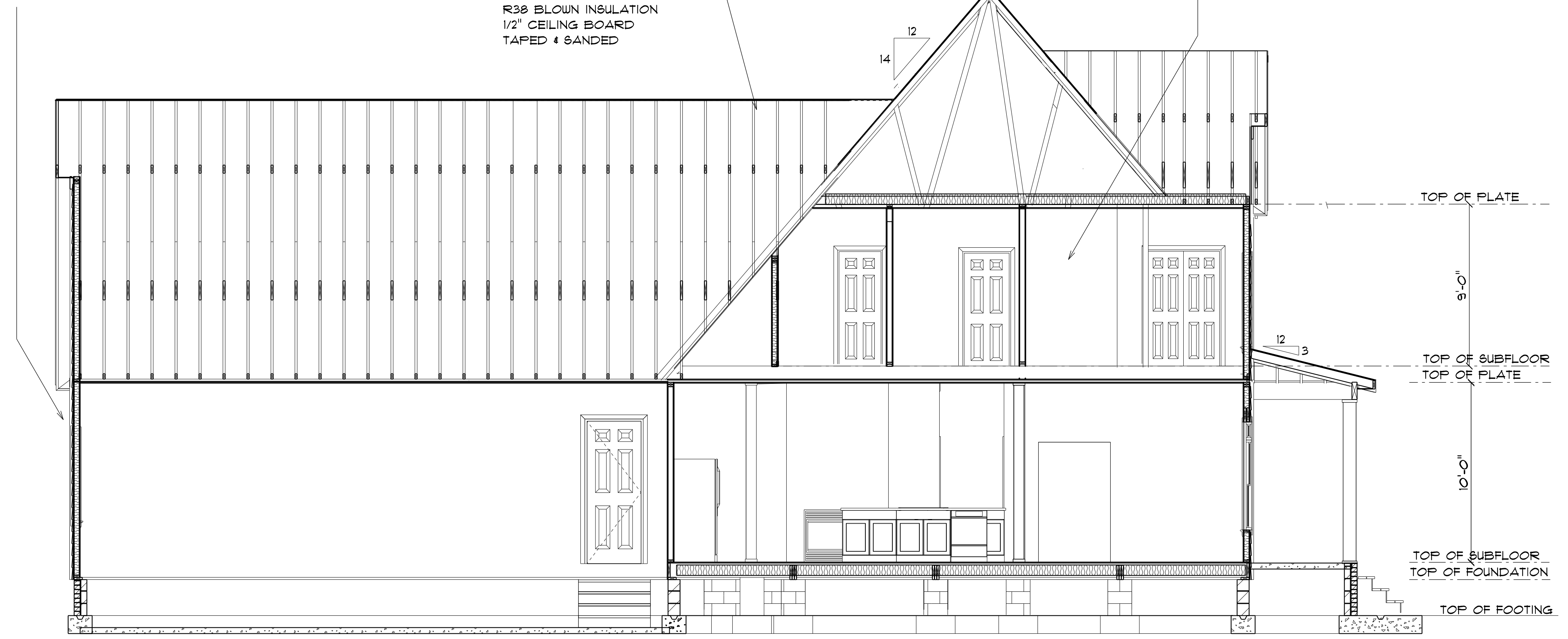


TWO STORY CRAWL SPACE FOUNDATION DETAIL
not to scale

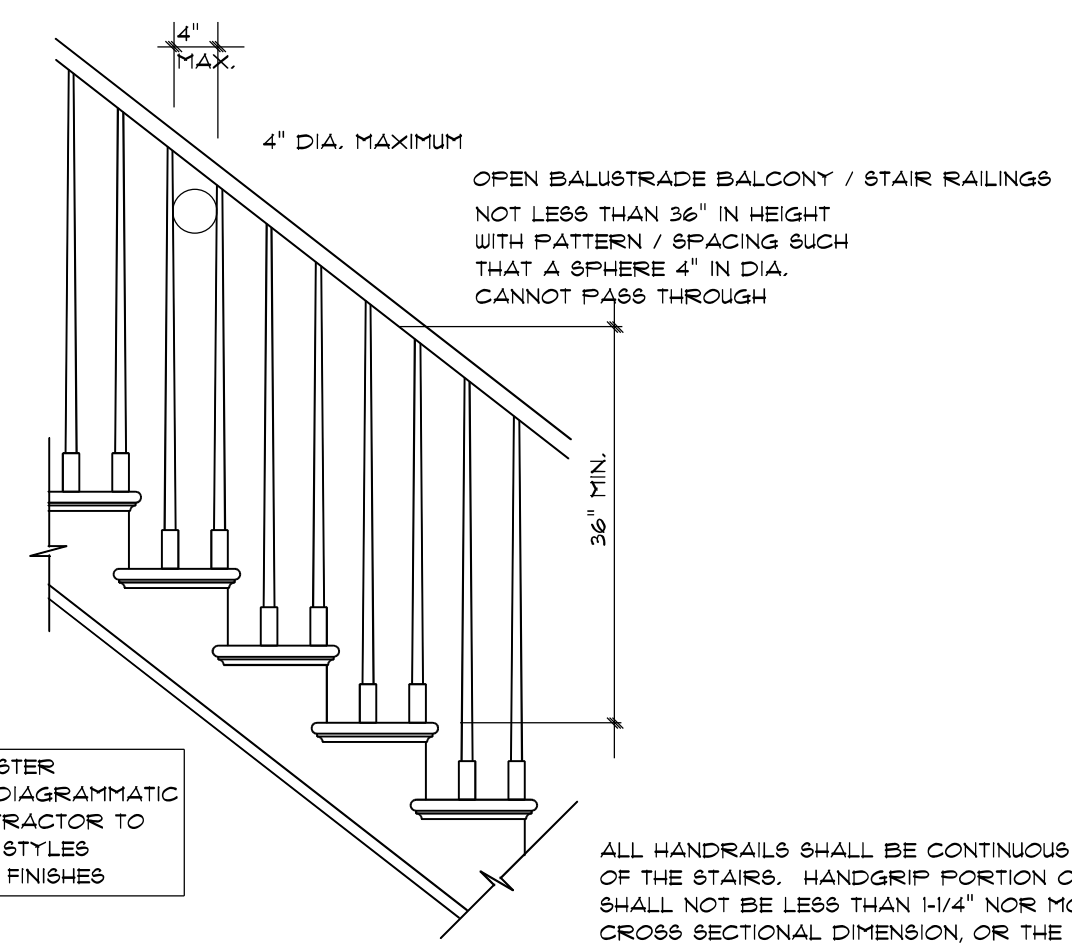
TYPICAL 2x4 SIDING EXTERIOR WALL:
HORIZONTAL SIDING
1/16" PLYWOOD SHEATHING
2x4 STUDS @ 16" o.c.
R19 BATT INSULATION
1/2" DRYWALL
TAPED & SANDED

TYPICAL TRUSS ROOF:
SHINGLES OR METAL ROOF
1/16" ROOFING PLYWOOD c/w
1" CLIPS
BLOCK & BRACE PER TRUSS MGR.
PRE-ENGINEERED TRUSSES @ 24" o.c.
2x4 TRUSS BRACING
R38 BLOWN INSULATION
1/2" CEILING BOARD
TAPED & SANDED

TYPICAL 2x4 WALL:
1/2" DRYWALL
TAPED & SANDED
2x4 STUDS @ 16" o.c.
1/2" DRYWALL
TAPED & SANDED



SECTION THROUGH
SCALE: 1" = 1/4"



STAIR RAILING
not to scale