

**GENERAL FRAMING NOTES:**

ALL LUMBER IN CONTACT WITH CONCRETE OR MASONRY SHALL BE PRESSURE TREATED.

FRAMING LUMBER SHALL BE SYP #2 GRADE AND/OR SPRUCE PINE FIR #1 AND/OR #2, KILN DRIED.

WHERE PRE-ENGINEERED JOISTS ARE USED, JOIST MANUFACTURER SHALL PROVIDE SHOP DRAWINGS, WHICH BEAR SEAL OF A N.C. ENGINEER.

STUDS AND JOISTS SHALL NOT BE CUT TO INSTALL PLUMBING OR WIRING WITHOUT ADDING METAL OR WOOD SIDE PANELS TO STRENGTHEN THE MEMBER TO ITS ORIGINAL CAPACITY.

NAIL MULTIPLE MEMBERS WITH 2 ROWS OF 16d NAILS STAGGERED 32" OC AN USE 3-16d NAILS 2" IN AT EACH END. DOUBLE ALL STUDS UNDER ROOF POST DOUGS UNO.

NAIL FLOOR JOISTS TO BILL PLATE WITH 8d TOE NAILS.

ALL EXPOSED FRAMING ON PORCHES AND DECKS SHALL BE PRESSURE TREATED.

PROVIDE WATERPROOFING AND DRAINS AS REQUIRED.

ALL FRAMING TO BE 16" OC UNO. WALL FRAMING DIMENSIONS ARE BASED ON 2 X 4 STUDS UNO. DOUBLE STUDS UNDER ALL HEADERS.

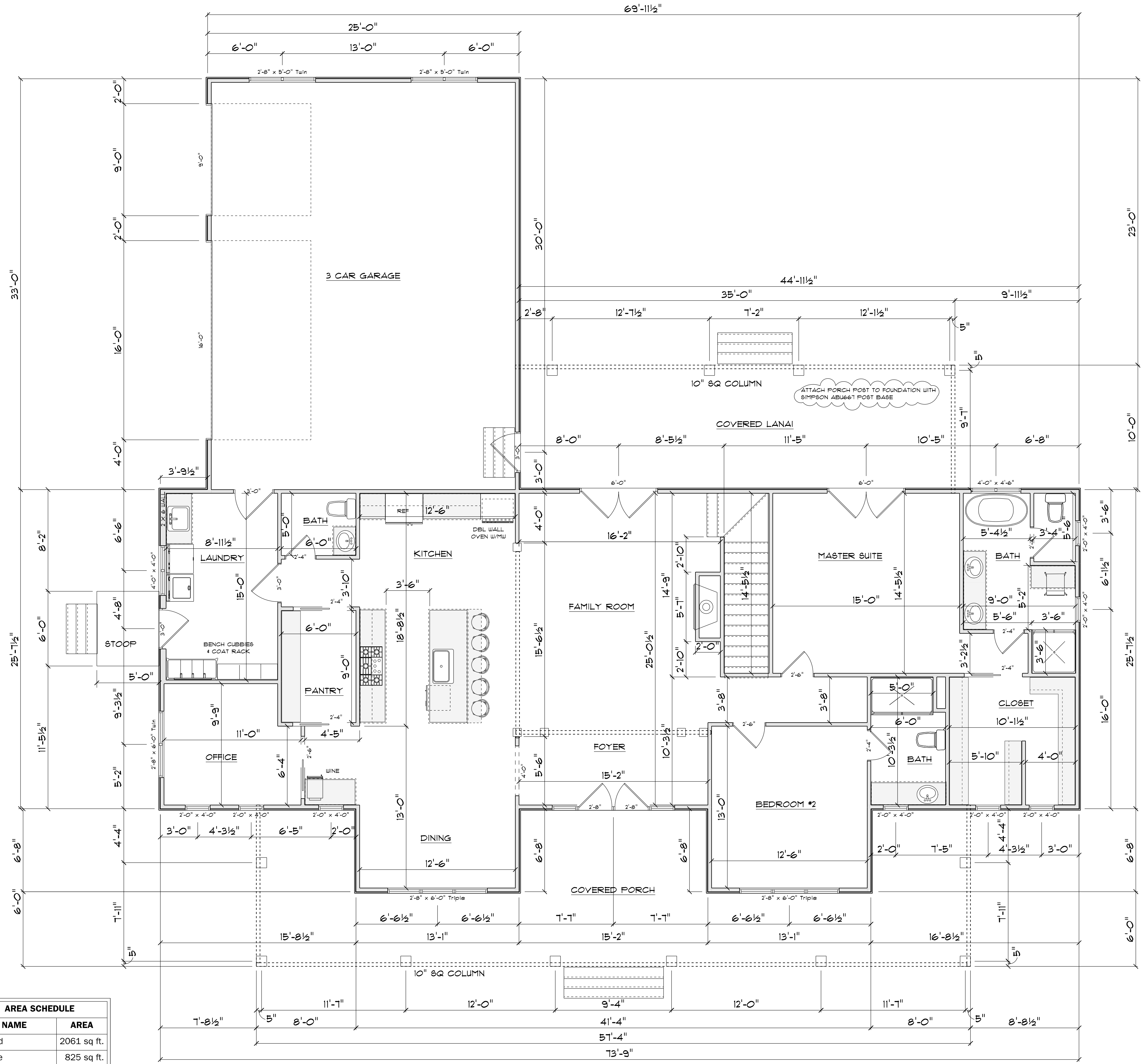
LVL'S AND TJI'S TO BE SIZED BY OTHERS.

EXTERIOR WALLS IN LIVING AREAS ARE 2 X 4

| WINDOW SCHEDULE      |       |                    |  |
|----------------------|-------|--------------------|--|
| SIZE                 | COUNT | LIBRARY NAME       |  |
| 2'-8" x 6'-0" Twin   | 1     | Window\Single Hung |  |
| 2'-8" x 5'-0" Twin   | 2     | Window\Single Hung |  |
| 2'-8" x 6'-0"        | 4     | Window\Single Hung |  |
| 2'-8" x 6'-0" Triple | 2     | Window\Single Hung |  |
| 2'-8" x 5'-0"        | 1     | Window\Single Hung |  |
| 2'-0" x 4'-0"        | 1     | Window\Single Hung |  |
| 2'-0" x 4'-0"        | 7     | Window\Single Hung |  |
| 4'-0" x 4'-0"        | 1     | Window\Single Hung |  |
| 4'-0" x 4'-6"        | 1     | Window\Single Hung |  |

| DOOR SCHEDULE        |       |       |                        |
|----------------------|-------|-------|------------------------|
| SIZE                 | HINGE | COUNT | LIBRARY NAME           |
| 3'-0"                | L     | 1     | Exterior Door\Colonial |
| 3'-0"                | L     | 1     | Exterior Door\Colonial |
| 3'-0"                | R     | 1     | Exterior Door\Counrty  |
| 6'-0"                | LR    | 2     | Exterior Door\French   |
| 16'-0"               | U     | 1     | Garage\Tall Garage     |
| 9'-0"                | U     | 1     | Garage\Tall Garage     |
| 2'-4"                | L     | 3     | Interior Door\Colonial |
| 2'-4"                | R     | 1     | Interior Door\Colonial |
| 2'-6"                | L     | 1     | Interior Door\Colonial |
| 2'-6"                | R     | 1     | Interior Door\Colonial |
| 3'-0"                | R     | 1     | Interior Door\Colonial |
| 2'-4"                | N     | 3     | Interior Door\Pocket   |
| 2'-6"                | N     | 1     | Interior Door\Pocket   |
| 2'-0" x 8'-11"       | NN    | 2     | Entry Door\Side Lites  |
| 2'-8"                | L     | 1     | Entry Door             |
| 2'-8"                | R     | 1     | Entry Door             |
| 2'-8" x 6'-0" Triple | UN    | 2     | Window\Single Hung     |
| 2'-8" x 6'-0"        | UN    | 4     | Window\Single Hung     |

| AREA SCHEDULE       |              |
|---------------------|--------------|
| NAME                | AREA         |
| Heated              | 2061 sq. ft. |
| Garage              | 825 sq. ft.  |
| Covered Lanai       | 349 sq. ft.  |
| Covered Front Porch | 555 sq. ft.  |



**1ST FLOOR PLAN**  
SCALE: 1" = 1/4"