



January 10, 2025

Jay Carroll  
Ascot Homes  
540 SW Broad St.  
Southern Pines, NC 28388  
Email: jay@ascotgrp.com

Reference: Engineering Services  
Permit #SFD2410-0028  
171 Travelers Way  
Lillington, NC 27546  
TE&D Project No.: 2501-020023

To Whom It May Concern:

As requested, a representative of Tyndall Engineering & Design, PA (TE&D) was on-site to observe the following item(s):

- 1) Missing foundation projection at the interior face of the front end of the right foundation wall.

The following conclusions and recommendations were noted:

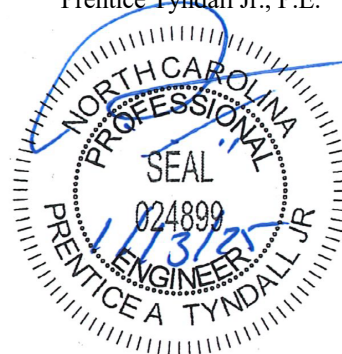
- 1) Based on our observations and analysis, the projection ranged from 0" to 2" with the majority of the area close to 2". We recommend the footing be uncovered to fully verify. Should the projection be less than 2", the footing is to be repaired with (1) of the following options per the attached details. Upon completion, the newly added section of concrete will provide the required support for the anticipated loading conditions.

We appreciate being able to assist you during this phase of the project. If you need further assistance or require additional information, please do not hesitate to contact us.

Sincerely,  
Tyndall Engineering & Design

Tripp Amos  
TA | 2501-020023

Prentice Tyndall Jr., P.E.



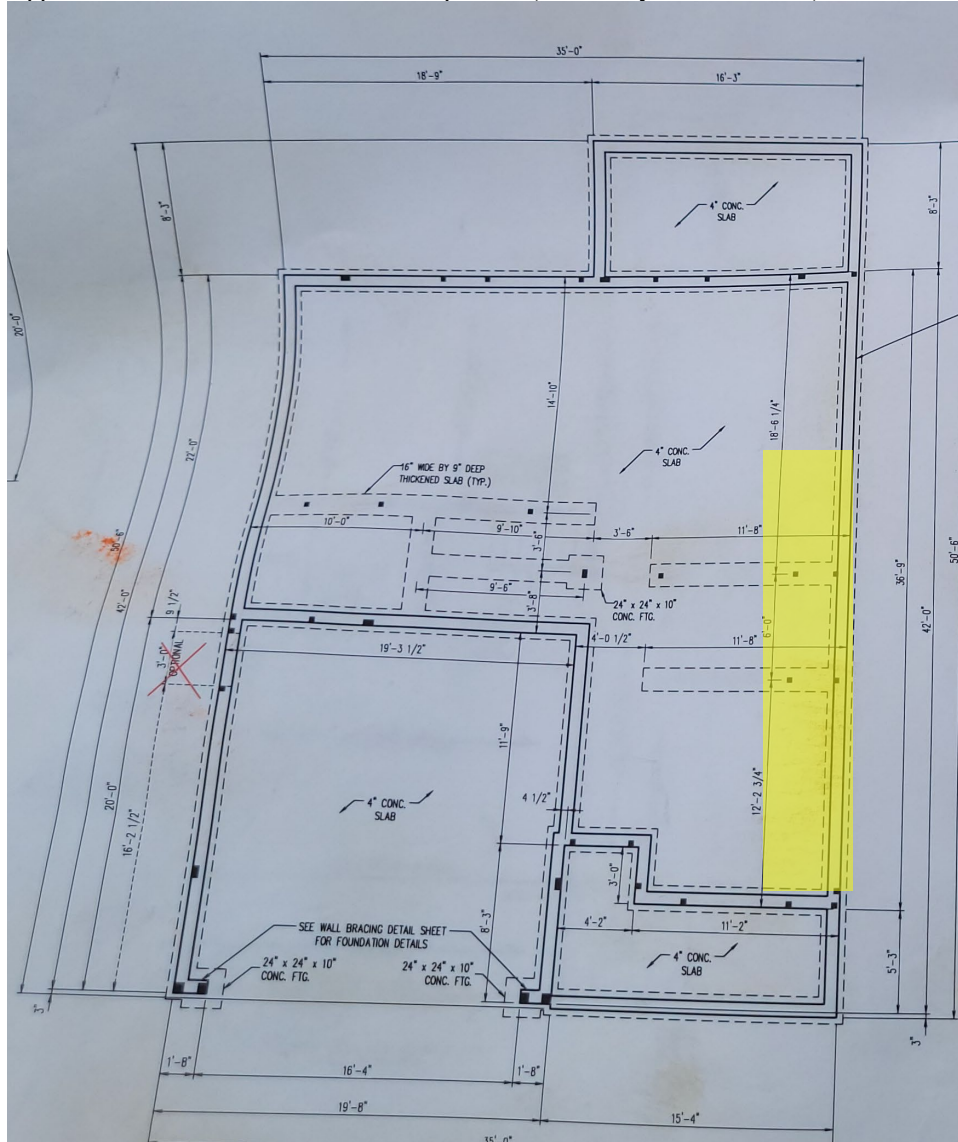


Approximate  
Area





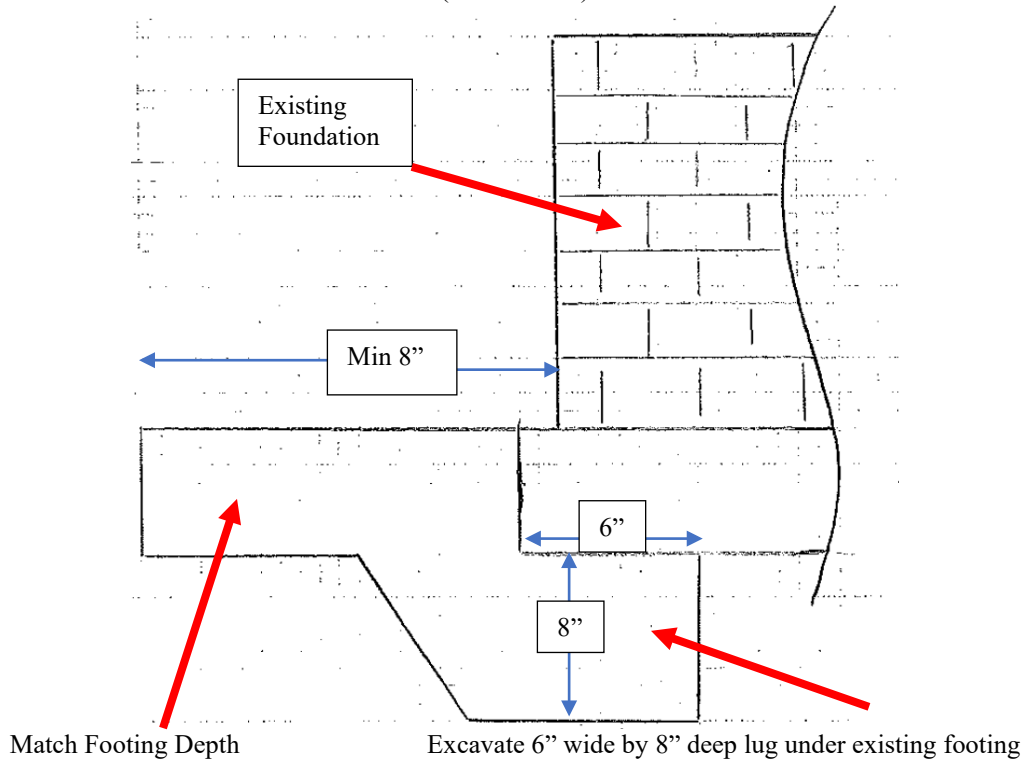
Approximate Location. Extends from step down (3/4 of way from rear wall) to front wall.







Option #1  
(Not to Scale)



Option #2  
(Not to Scale)

