



January 10, 2025

Jay Carroll
Ascot Homes
540 SW Broad St.
Southern Pines, NC 28388
Email: jay@ascotgrp.com

Reference: Engineering Services
Permit #SFD2410-0026
158 Travelers Way
Lillington, NC 27546
TE&D Project No.: 2501-020004

To Whom It May Concern:

As requested, a representative of Tyndall Engineering & Design, PA (TE&D) was on-site to observe the following item(s):

- 1) Missing foundation projection at the interior face of the rear end of the left foundation wall.

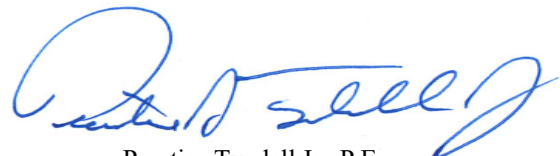
The following conclusions and recommendations were noted:

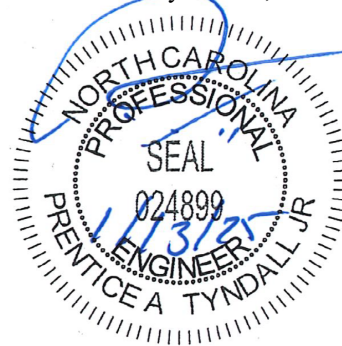
- 1) Based on our observations and analysis, the projection ranging of 0” to 2” is not suitable. The footing is to be repaired with (1) of the following options per the attached details. Upon completion, the newly added section of concrete will provide the required support for the anticipated loading conditions.

We appreciate being able to assist you during this phase of the project. If you need further assistance or require additional information, please do not hesitate to contact us.

Sincerely,
Tyndall Engineering & Design


Tripp Amos
TA | 2501-020004


Prentice Tyndall Jr., P.E.



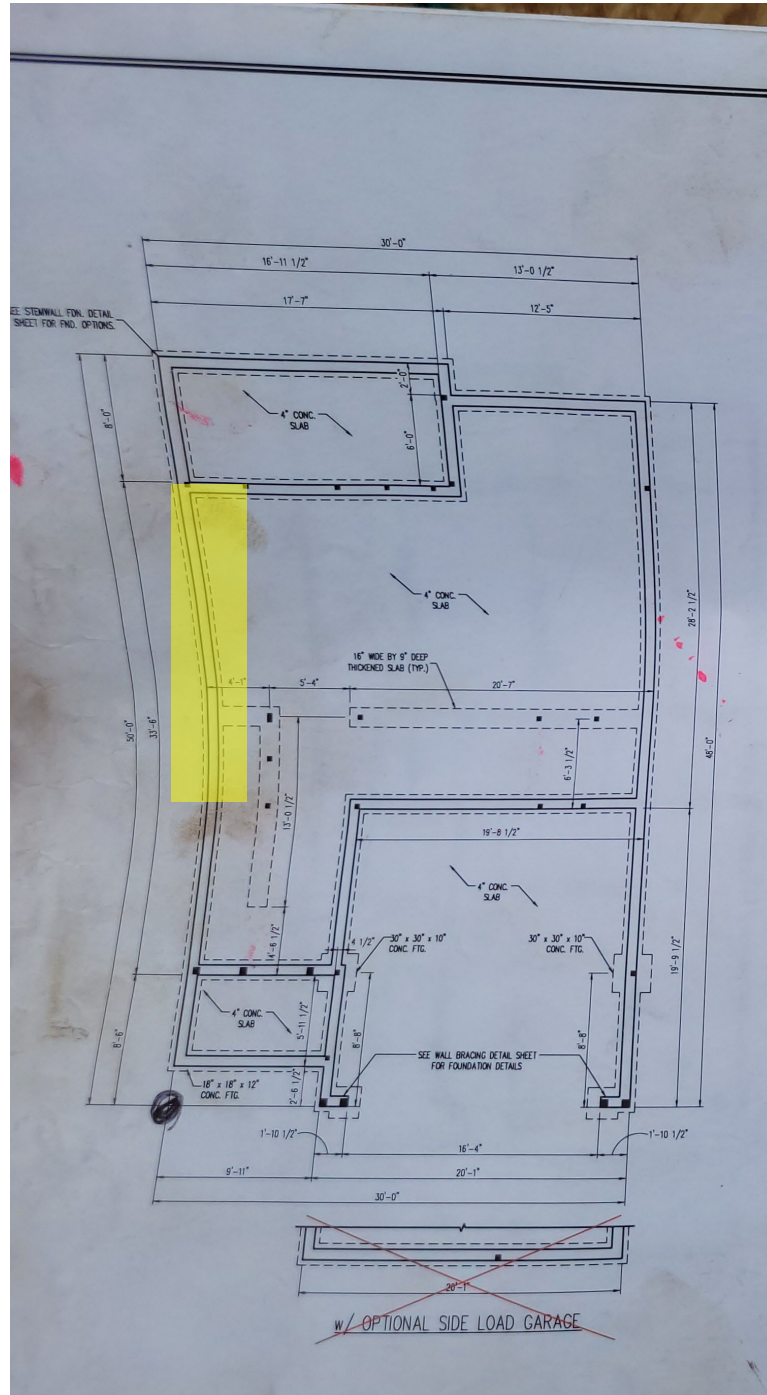


Approximate Area



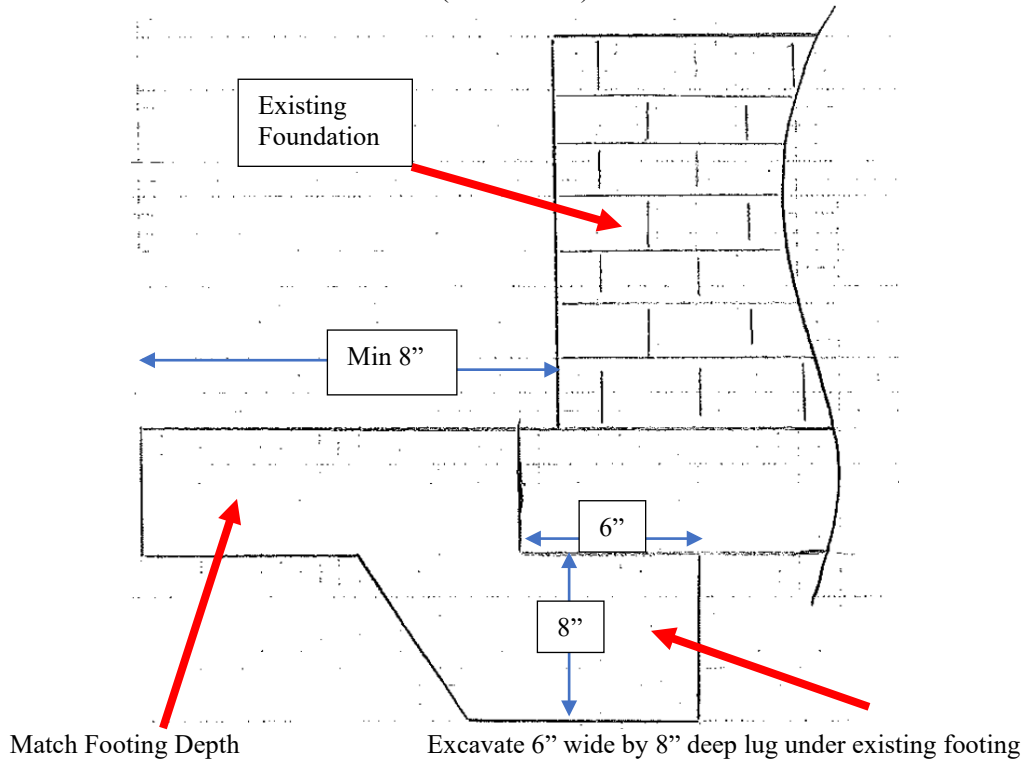


Approximate Location. Extends from step down (across from garage) to rear wall.





Option #1
(Not to Scale)



Option #2
(Not to Scale)

