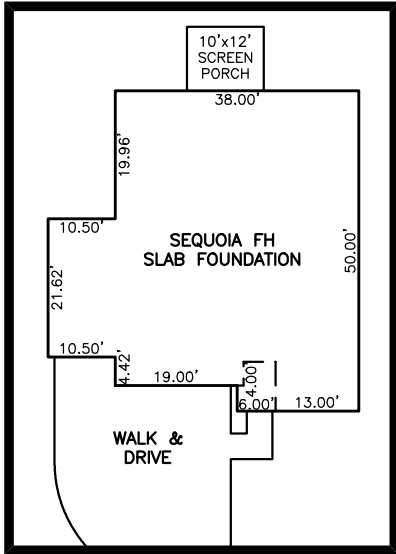
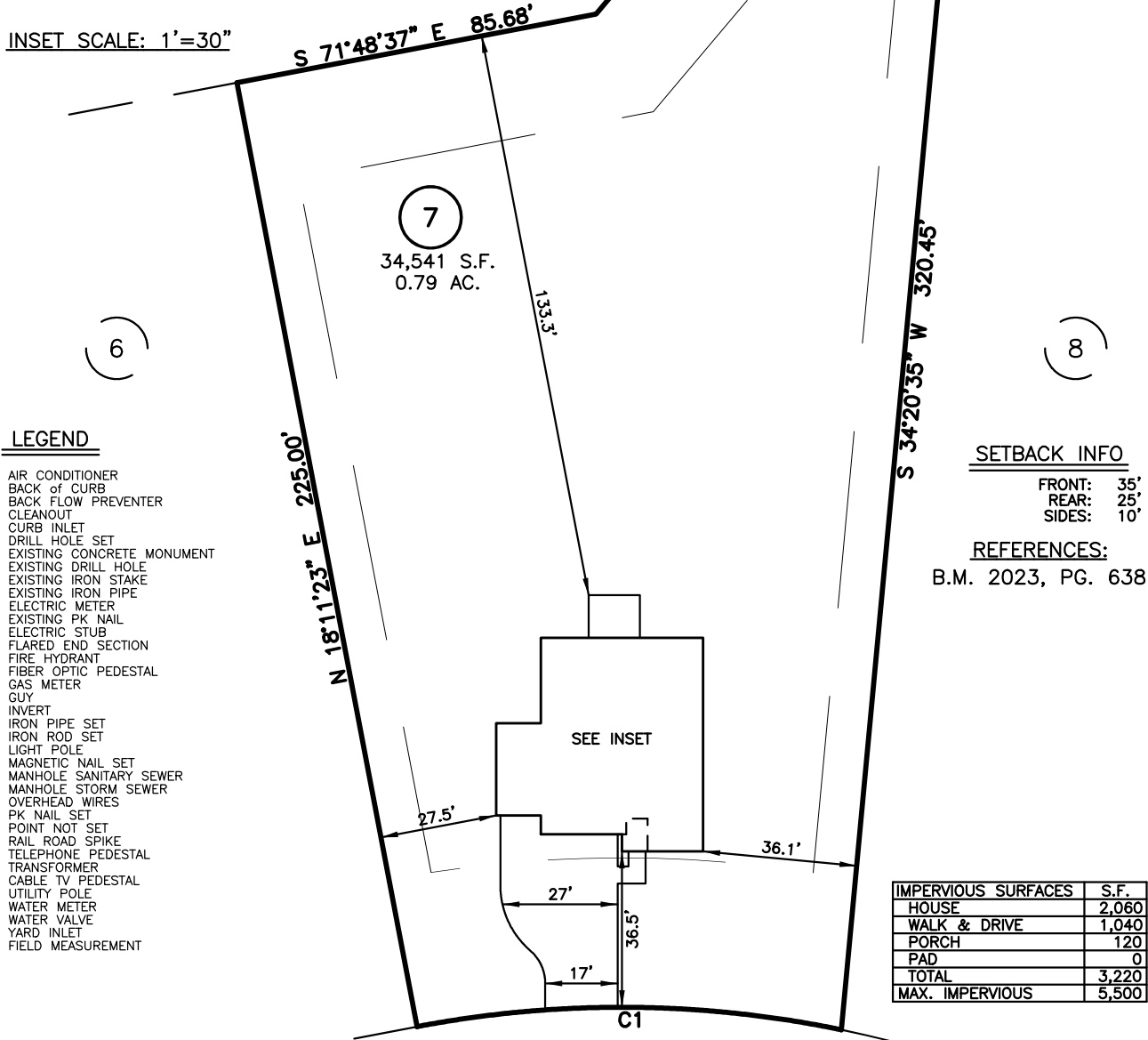
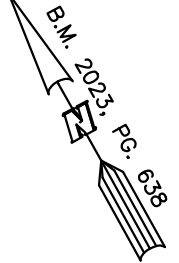


PLOT PLAN FOR
MATTAMY HOMES, LLC.
 57 BERING CIRCLE
 LOT 7, RIVERFALL SUBDIVISION, PHASE ONE
 BLACK RIVER TOWNSHIP, HARNETT COUNTY, NORTH CAROLINA



INSET SCALE: 1' = 30"

N/F
 KENNETH WAYNE SNIPES JR
 D.B. 3372, PG. 76
 P.B. 2000, PG. 389



LEGEND

- ▲ AIR CONDITIONER
- BC BACK OF CURB
- BFP BACK FLOW PREVENTER
- CLEANOUT
- CURB INLET
- DHS DRILL HOLE SET
- ECM EXISTING CONCRETE MONUMENT
- EDH EXISTING DRILL HOLE
- EIS EXISTING IRON STAKE
- EIP EXISTING IRON PIPE
- EM ELECTRIC METER
- EPK EXISTING PK NAIL
- ES ELECTRIC STUB
- FLARED END SECTION
- FIRE HYDRANT
- FIBER OPTIC PEDESTAL
- GM GAS METER
- GUY
- INV. INVERT
- IPS IRON PIPE SET
- IRS IRON ROD SET
- LIGHT POLE
- MNS MAGNETIC NAIL SET
- MANHOLE SANITARY SEWER
- MANHOLE STORM SEWER
- OHV OVERHEAD WIRES
- PKS PK NAIL SET
- PNS POINT NOT SET
- RRS RAIL ROAD SPIKE
- TELEPHONE PEDESTAL
- TRANSFORMER
- CABLE TV PEDESTAL
- UTILITY POLE
- WATER METER
- WATER VALVE
- YARD INLET
- () FIELD MEASUREMENT

SETBACK INFO

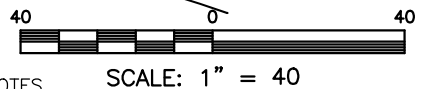
FRONT: 35'
 REAR: 25'
 SIDES: 10'

REFERENCES:

B.M. 2023, PG. 638

IMPERVIOUS SURFACES	S.F.
HOUSE	2,060
WALK & DRIVE	1,040
PORCH	120
PAD	0
TOTAL	3,220
MAX. IMPERVIOUS	5,500

BERING CIRCLE
 50' PUBLIC R/W



LINE	BEARING	DISTANCE
L1	S 73°21'33" E	23.99'

NUM	RADIUS	ARC	DELTA	CHORD BRG	CHORD
C1	255.00'	100.00'	22°28'10"	N 60°34'32" W	99.36'

NOTES

1. THIS SURVEY SUBJECT TO ANY FACTS THAT MAY BE DISCLOSED BY A FULL AND ACCURATE TITLE SEARCH.
2. THIS MAP MAY NOT BE A CERTIFIED SURVEY AND HAS NOT BEEN REVIEWED BY A LOCAL GOVERNMENT AGENCY FOR COMPLIANCE WITH ANY APPLICABLE LAND DEVELOPMENT REGULATIONS AND HAS NOT BEEN REVIEWED FOR COMPLIANCE WITH RECORDING REQUIREMENTS FOR PLATS.

PLOT PLAN
 PRELIMINARY PLAT- NOT FOR RECORDATION,
 CONVEYANCE OR SALES

REV CODE: 1.FLIP, 2.PLAN, 3.ROTATE, 4.MOVE, 5.SS
 6.SEVERAL OF ABOVE, 7.LAND FEATURE, 8. OTHER

DATE: SEP, 18 2024

F.B. _____

RWK, PA

ENGINEERING ~ SURVEYING

CORPORATE LICENSE: C-1771
 101 W. MAIN ST., SUITE 202
 GARNER, NC 27529
 PHONE (919) 779-4854
 FAX (919) 779-4056